

## FEEDER CATTLE AND CALF SALES

**SOUTH BRANCH STOCKYARDS**  
MOOREFIELD, WEST VIRGINIA

OCT. 11, 6:00 P.M.

All size cattle and calves

## FEEDER SALE

**WEST NOTTINGHAM AUCTION**  
ROUTE 276, RISING SUN, MD.

**SATURDAY, OCTOBER 14, 1:00 P.M.**

MANY HEAVY FEEDERS ALREADY CONSIGNED.  
ALL CONSIGNMENTS WELCOMED. HAULING  
AVAILABLE.

Phone 301-287-8937 or 717-786-3394

LEE MOORE and LLOYD KREIDER,  
Auctioneers and Managers

## VINTAGE SALES STABLES, INC.

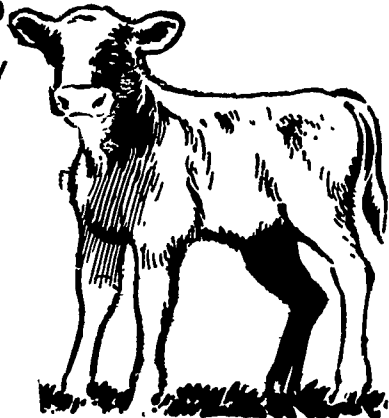
R.D. 1, Paradise, Pa. Box 100

Sale Every Tuesday

STARTING OCT. 3

ATTENTION!

## VEAL CALF FEEDERS



Now you can buy U.S.D.A. graded veal calves for your feeding operation, 25 calves to a pen. Graded by weight-sex-conformation. Only calves weighing 125 pounds and lighter will be graded.

To eliminate stress on these small calves they will be unloaded, graded and weighed immediately after arrival at our auction. They will be placed in a graded pen for your inspection. Calves will be sold in pen, and stay in pen until loaded in your truck.

Vintage Sales Stables is now selling from 800 to 900 calves every Tuesday, 7:30 P.M.

If you are unable to come and purchase calves in person, order buyers can be of service to you by calling Vintage Sales Stables, 442-4181 or Kenneth E. Hershey, 442-4874.

## PUBLIC AUCTION

FOR HARRY HEDRICK, PARKTON, MARYLAND

**TUES., OCT. 17, 1972, at 12:00 NOON**

LOCATION: Midway between Baltimore, Md. & York, Pa., turn West from 183 on Middletown Rd. and 3 Mi. to the farm opposite the church.

## 94 AYRSHIRES

Premier breeder 1971 Pa. All-American. A real good home-bred herd that was founded in 1931. 57 COWS & 1ST-CALF HEIFERS, 7 BRED HEIFERS, 15 YEARLINGS, 15 CALVES. Herd includes the 1971 Reserve All-American 4-yr.-old, 26 daughters of 'Klondike' and 20 daughters of 'Maestro' - two plus proven sires of dozens of winners that can also produce a lot of 4 percent milk. Good DHIR records - not real big! More important - Hedrick cattle have satisfied lots of customers. Cattle tested for interstate shipment. For Catalog Write

**TOM WHITTAKER**

Sale Mgr., BRANDON, VT. 05733  
Allen Hill, Auctioneer - Woodbine, Md.

## Penn State Dairy Manual Available

During the decade of the "management revolution" the professional dairyman needs many facts in reference form to make sound decisions.

"At the same time, ag industry

personnel who service modern dairy farms need factual resource information to properly advise the new breed of dairymen," said Donald L. Ace, Extension dairy specialist at The

Pennsylvania State University. Ace is one of the authors of a "Dairy Reference Manual" published by the College of Agriculture.

The Penn State publication has been designed to be a catalog of facts for professional dairymen and personnel who finish supplies and services to the industry.

Topics covered in the book include milk quality and product technology, diseases and parasites, breeding and selection, physiology of reproduction, feeding, milking equipment, structures and barn equipment, and farm management data

The 216-page book may be purchased for \$3.00 plus 6 percent sales tax. Make check or money order payable to The Pennsylvania State University and send with your name and address to DAIRY MANUAL, Box 6000, University Park, Pa. 16802

## Dwarf Apple Trees Boost Labor Output

To an efficiency-minded apple grower, happiness can be an orchard full of dwarf or semi-dwarf trees.

A study in Washington State found that worker productivity averaged about 18 boxes per hour in dwarf orchards—compared with less than 12 in orchards planted to standard size trees.

In standard orchards, where tree height is at least 13 feet, workers spend up to a third of their time moving and climbing ladders to reach apples that may be as high as 25 feet. Largely because of the cumbersome ladders, experienced male workers outpick women by more than four boxes per hour.

Besides easy-to-pick apples, dwarf orchards offer pickers another advantage. During the 1968 harvest, workers' earnings—determined by the piece rate times the picking rate—averaged \$3.37 per hour in dwarf orchards. Pickers in conventional orchards averaged \$2.53.

## OUR OPEN STOCKER FEEDER SALE

**Thursday, Oct. 12,  
7 P.M.**



One of our special sales in the year. NO SPECIAL REQUIREMENTS.

Be sure to send your calves & yearlings to this sale. Buyers will be wanting good type beef stock.

STEER & HEIFER CALVES, Yearlings. Bring your cattle in during the day along with other livestock.

STOCKER SALE STARTS!  
AT 7 P.M.  
DEPENDABLE  
SALES EVERY THURSDAY

## ROCKINGHAM

LIVESTOCK SALES, INC.  
Dial 434-6765 P.O. Box 611  
Harrisonburg, Va.

## MARYLAND FEEDER CATTLE SALE

1:00 P.M.

**TUESDAY, OCTOBER 17, 1972**

Four States' Livestock Sales, Inc.  
Hagerstown, Maryland

**800 to 1000 head**

penned according to breed, sex, grade and weight Sold by pound.

SPONSORED BY

**MARYLAND BEEF CATTLE PRODUCERS, INC.,**

2222 Symons Hall, University of Maryland  
College Park, Maryland 20742.

Phone: 301-454-3553.

PENNSYLVANIA ANGUS ASSOCIATION

## ANNUAL FALL CALF SALE

AT PENNSYLVANIA STATE UNIVERSITY  
STATE COLLEGE, PENNA.

**SATURDAY, OCTOBER, 14, 1972**

11:00 A.M.

**HEIFERS ★ ★ ★ STEERS**

For Catalogs: Mrs. Caryl Velisek  
Gravel Hill Road

Phone: 301-845-8706 Woodsboro, MD 21798

## TERRA ALTA STOCKYARDS, INC.

TERRA ALTA, WEST VIRGINIA

## ANNOUNCES SPECIAL FEEDER SALES

Oct. 25- 7:30 P.M. Demonstrational Calf Sale. This sale is co-sponsored by the West Virginia Cooperative Extension Service. Steer and Heifer calves only. All calves dehorned. 300 to 650 lbs. will be graded in uniform lots by weight and grade (1500 to 1800 lbs.)

Nov. 3- 2 P.M. Special Roundup Feeder Sale 2 year old yearlings and calves. 1200 to 1500 head.

All good native cattle from local farms  
For further information on  
Special Sales or our weekly Feeder Sales

CALL RUSS STOVER, MANAGER

**TERRA ALTA STOCKYARDS INC.**

Terra Alta, West Virginia  
Phone 304-789-2788

## SEMI-ANNUAL OPEN CLASS FAT STEER SHOW & SALE

**OCTOBER 12, 1972**

**New Holland Sales Stables Inc.**

Three Classes

Angus

Hereford

Mixed Breeds

JUDGED

&

SOLD

In Lots of 6

All Cattle

Feeders

Eligible

Judging - 10 A.M.

Sale - 3 P.M.

20 Trophies Awarded To Sellers & Buyers

Entries may be registered with Abe Diffenbach,  
Manager