

USDA Offers Light Horse & Pony Handbook

A new handbook describing the breeding and raising of light horses and ponies has been published by the USDA.

The new publication, by USDA's Agricultural Research Service, lists 26 common light horse and pony breeds and describes the characteristics of each. Photographs of each breed are also included.

The handbook gives information useful to both amateur

and professional horsemen, such as selecting horses, determining age, care and feeding, necessary equipment and diseases and parasites. Valuable tables on recommended allowances of minerals and vitamins and a guide to feeding the light horse should help the experienced breeder improve his feeding program.

Other sections include horse judging, management, hor-

semanship and listings of breed registry associations and horse magazines. The illustrations include floor plans for a horse barn, proper feet trimming, types of bits and other tack and even a sample breeding contract for stallion owners.

Dr. M.E. Ensminger, noted world authority on horses, collaborated with ARS in preparing the publication.

Single copies of Agriculture Handbook No. 394, "Breeding and Raising Horses," are available for \$1.00 each from the Superintendent of Documents, U.S. Government Printing Office, Washington, D.C. 20402. Please use zipcodes.

Baking Tip

To avoid "hot spots" inside your oven, place baking pans in the center of the oven. This will permit free circulation of air and heat on all sides and top and bottom. Extension foods and nutrition specialists at Pennsylvania State University say when putting two or more pans in the oven at the same time, stagger them on different shelves, so that one is not directly above the other. There should be at least one inch between two pans on the same shelf.

Max Smith to Guide Farm-City Activities

M. Maxwell Smith, County Agricultural Agent has been appointed Chairman of the Lancaster County Farm-City Council by E.M. Damon, State Farm-City Council Chairman.

In making the announcement Damon said that Smith will coordinate Farm-City Week activities in Lancaster County. This year Farm-City Week will be observed throughout the state November 17-23. The theme is Quality of Life - A Mutual Responsibility of Farm and City.

One of the major objectives of Farm-City Week, Damon said, is to bring about a better understanding between our rural and urban people. These two groups are interdependent and need to have a better knowledge

of each other's role in today's society. They have an important part in improving the quality of life in the state, Damon added.

Farm-City Week has been observed in Pennsylvania for more than a dozen years. Annually, it is sponsored by 50 state-wide organizations, state and federal agencies and local groups. Kiwanis International promotes Farm-City Week throughout the nation.



FERTILIZE Your WHEAT With ORTHO UNIPEL FERTILIZER



- UNIFORM COATED PELLETS — for even drilling
- CLEAN AND EASY TO HANDLE will not clog up drills
- CONTAINS FAST ACTING AND LONG LASTING NITROGEN AND PHOSPHORUS
- HIGH ANALYSIS — less handling and fewer stops while planting

OTHER ANALYSIS AVAILABLE
20-10-10 13-34-10 16-16-16

AVAILABLE IN BULK OR BAGS

CALL TODAY AND PLACE YOUR ORDER

P. L. ROHRER & BRO., INC.

SMOKETOWN, PA.

Phone Lanc. 397-3539

ERTH-RITE SEA-BORN ALGIT

ZOOK & RANCK, INC.

R.D. 1 Gap, Pa. 17527
Phone 717-442-4171



For Interior Farm Buildings

- Does not rub or flake off
- Is really white
- Cleans off windows and stalls easily

Spraying

APPLIED BY
RICHARD R. FERRY

2020 Horseshoe Rd. Ph. 717-397-0035
Lancaster Penna.

RED ROSE FARM SERVICE INC.

Mr. Farmer

Do you have a Surplus of New Crop Shelled Corn for Storage or Market?

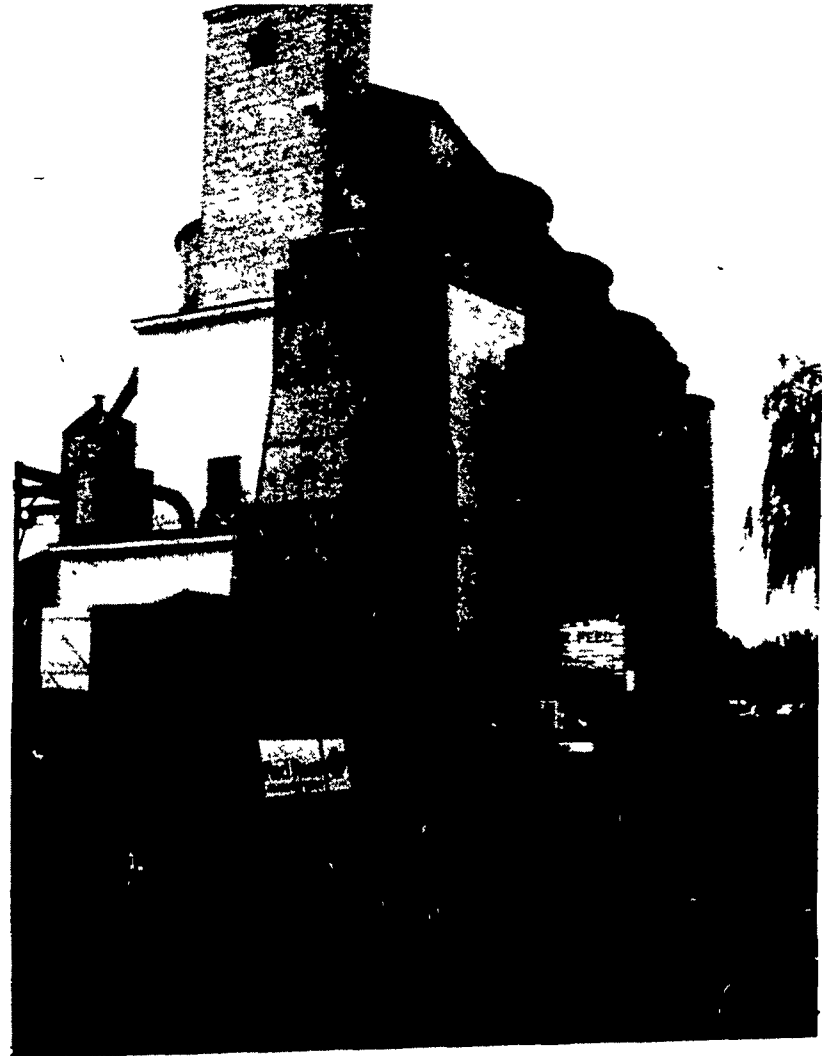
We are now receiving grain at our elevator located on Route 222 North of Quarryville.

Ask about our Grain Banking Programs. We offer a Complete Program to fit Every Farmers need.

FEED - GRAIN EXCHANGE

STORAGE

MARKETING



FOR COMPLETE INFORMATION PLEASE CALL ONE OF OUR CONVENIENTLY LOCATED STORES TODAY.

Red Rose
ANIMAL FEEDS



Main Office

N. CHURCH STREET
QUARRYVILLE, PA.
PHONE 786-7361

Grain Elevator

NEW PROVIDENCE, RD NO. 1 PA.
PHONE 786-3745

Buck, Pa.

284-4464