

Poultry Market Reports

Delmarva

Wednesday, September 27
BROILERS

Ready-to-cook demand only fair. Undertone about steady for next week's shipments. Processing activity continues under a week ago. Live supplies fully adequate. Negotiated trucklot prices 2-3 No. ready-to-cook broiler-fryers for delivery next week.

U.S. Grade A TFEWR Plant Grade 30.00-30.50

Pool trucklot prices for Thursday arrival: U.S. Grade A 31-35 Mostly 31, Plant Grade 29-33 Mostly 30.

Fogelsville

Tuesday, September 26

(Prices paid dock weights cents per pound except where noted).

Fowl-Leghorn 6-11, Fowl Colored 7½-19, Pullets-Colored 27½-32½, Roasters 25-29, Ducks 31-36, Drakes 22-53; Turkeys-hens 32-34; Rabbits 21-41, Guineas 60-60½, Pigeons (per pair) 89-3.72.

Total coop sold 440. Auction every Tuesday Poultry received Monday 7 P.M. to 10:30 P.M., Tuesday 7 A.M. to 12 Noon. Sale at 11:30 A.M.

Eastern Pa. and N.J.

Wednesday, September 27
LIVE HENS

Price levels are unchanged to fractionally lower. Offerings on light type hens increased and most plants are stepping up slaughter schedules. Some supplemental shipments on light type are coming in from points in Virginia. Demand is fair. Prices paid at Farm: Light Type Hens 7-10½ mostly 10-10¼ in Pa., mostly 9½-10 in N.J. Heavy Type Hens 13½-14c.

Weekly New York Egg Market

(From Monday, September 25th to Friday, September 29th)

	Mon.	Tues.	Wed.	Thurs.	Fri.
WHITE					
Fcy. Ex. Large	45	42	42	40	40
Large	42	39	39	37	37
Mediums	36	34	34	33	33
Pullets	25	24	24	24	24
Peewees	14	14	14	14	14
BROWN					
Fcy Large	45	43	42	40	40
Mediums	Unquoted				
Pullets	Unquoted				
Peewees	Unquoted				
Standards	36½	34½	34½	33	33
Checks	17-17½	17-17½	17-17½	17	17

Longtone - More promotions scheduled but market still under extensive selling pressures.

New York Eggs Oklahoma City

Wednesday, September 27
Local wholesale interest was light, generally limited to regular customers for immediate needs. There were too few cash transactions to report wholesale values this morning; most sales are to be billed on market values to be determined Thursday.

Floor stocks are tending to accumulate slightly on all but jumbos and are mostly ample. Offerings from shipping points are reported readily available from nearby and Southern areas.

Carton movement into retail channels is fair but irregular. Undertone unsettled and weak.

Thursday, September 28
Estimated Receipts 13,000
Same Day Last Week 9,733
Same Day Last Year 10,402

Fairly active, feeder calves and feeder heifers generally steady to strong. Feeder steers over 500 pound strong to 50c higher. Demand broad for all weights and grades with bidding spirited on thin fleshed offerings suitable for grazing. Majority receipts High Good and Choice 375-800 pound steers and 350-600 pound heifers. Fairly large attendance buyers.

SALES AS OF 12:30 P.M.

FEEDER STEERS—Choice 300-400 pound 53.50-54.75; 400-500 49.50-52.50, small lot 460 pound at 53.70; 500-600 46.75-50.00; short load 593 pound at 49.70; 600-700 44.50-47.75, part load 624 pound at 47.90; 700-800 42.75-45.80, part load 734 pound at 46.75; 800-900 40.70-41.75, part load 808 pound 44.00; Mixed Good and Choice 300-400 50.75-52.00; 400-500 47.50-49.00; 500-600 44.00-46.75; 600-700 42.00-43.75; 700-800 40.00-43.00; few 800-885 38.00-38.75; Good 300-500 44.50-49.25; 500-650 38.50-43.50; few mostly Good 545-795 Holstein steers 36.00-38.00.

FEEDER HEIFERS—Choice 300-400 pound 44.00-47.50, small lot 270 pound at 49.90; 400-500 41.75-47.50, part load 435 pound at 48.80; 500-600 40.50-41.75, small lot and part load 512-515 at 42.20-42.90; few 600-675 40.00-41.50, small lot 751 pound at 36.60; Mixed Good and Choice 350-500 39.50-43.00; few 500-600 38.00-38.75; good 525-810 34.00-38.00.

Local Grain

Thursday, September 28
These prices are made up of the average prices quoted by five participating local feed and grain concerns. It should be noted, however, that not every dealer handles each commodity. All prices are per bushel, except for ear corn which is per ton.

The average local grain prices quoted Thursday, September 28, 1972 are as follows:

	Bid+	Offered+
Ear Corn	46.00	52.33
Shelled Corn	1.51	1.67
Oats (local)	.81	.95
Oats (western)	1.07	1.16
Barley	1.14	1.36
Wheat	1.68	1.87

+Bid is the price the dealer will buy from the farmer delivered to the mill. Offered is the price the dealer will sell for at his mill.

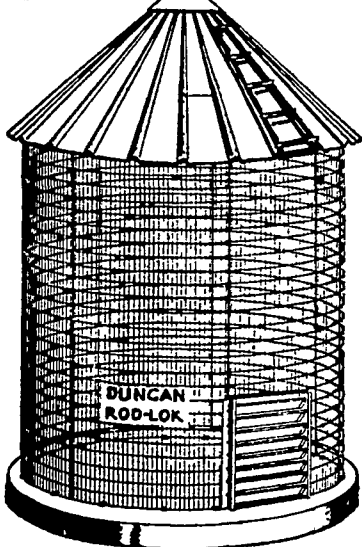
DUNCAN CORN CRIB

Rods Slide Quickly Into Place . . . Lock Panels Into Unbroken Cylinder Of Galvanized Mesh!

NOW, you can own a permanent, lifetime, all steel mesh corn crib for less than the cost of many temporary cribs . . . have all the strength and anti-rust characteristics the galvanized mesh can have. Using the Interlocking joint panel connections you quickly hook together and lock with rods . . . creating an unbroken cylinder of 2 or 5-gauge steel mesh with the ability to stand pressures and strains far in excess of any which may be put upon it under normal use.

The simple "J-bolt" method of attaching the steep roof to the mesh uses the inherent strength of each to reinforce the other. A generous 6 inches of overhang has been provided for greater protection. Interlocking sheets of heavy gauge metal give the "Rod-Lok" Corn Crib roof strength

High pitch roof approx. 45 degree pitch 24 gauge roof panels

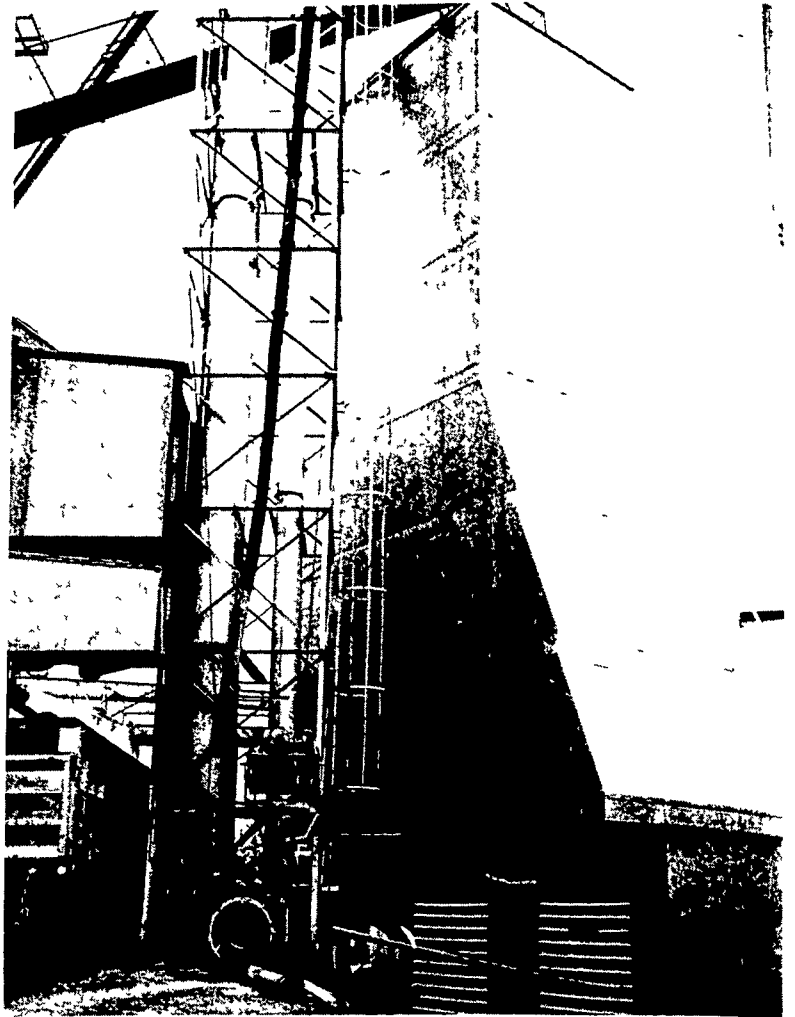


to stand the highest wind and hold the heaviest snowfall. Top cap and half panel on roof removable for easy filling. Large slat door opening. Slat not furnished for door.

CLYDE E. KEENER

Intersection of Rt. 72 and 230

Phone 717-569-9861



Cargill, Inc., has installed a new grain dryer at Route 441 location just outside Marietta. According to Bob Mueller, sales manager for the local operation, the dryer is the largest in this vicinity. Mueller also said that the dryer is designed to meet all federal and state regulations on air pollution.

R&T Tractor Pull Winners

The Rough & Tumble Tractor Pull Association held a tractor pull on the association's grounds in Kinzers on Saturday, September 16. The winner in the 15,000 pound super stock class was Carl Horst, Atglen.

Other winners were: 5,000 lb. stock, Clement Stauffer; 5,000 lb. super stock, Leroy Burnett, Cogan Station; 7,000 lb. stock, J. Scott Greenleaf, Oxford.

7,000 lb. super stock, Toney Stauffer, New Holland; 7,000 lb. modified, Barry Nickel, Paradise; 9,000 lb. stock, Jerry Ogline, Blue Ball; 9,000 lb. super stock, Eugene Ulmer, Montoursville; 9,000 lb. open, Eugene Ulmer.

12,000 lb. stock, Charles Welsh, Gap.; 12,000 lb. super stock, Harry Griest, Coatesville.

LANCASTER FARMING

Lancaster County's Own Farm Weekly

P.O. Box 266 - Lititz, Pa. 17543
Office: 22 E. Main St., Lititz, Pa. 17543
Record-Express Office Bldg.
Phone: Lancaster 717-394-3047 or Lititz 717-626-2191
Richard E. Wanner, Editor
Subscription price: \$2 per year in Lancaster County; \$3 elsewhere

Established November 4, 1955
Published every Saturday by Lancaster Farming, Lititz, Pa.
Second Class Postage paid at Lititz, Pa. 17543

Members of Newspaper Farm Editors Assn., Pa. Newspaper Publishers Association, and National Newspaper Association.

Start building next year's record yield right now!



Plow down Unipel 20-10-10 this Fall. It works!

Get a jump on Spring with Unipel 20-10-10. Plow this unique high-nitrogen fertilizer down now while you have the extra time and the weather is ideal. One pass across the field and you've got your entire basic fertilization job completed.

Do it now and stop worrying about the rush and possible wet weather that could keep you from doing the job right next Spring. It's a great way to give your crops a faster, stronger start next year.

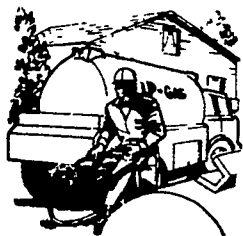
You can do it all this Fall. We'll be around soon with the whole story.

P. L. ROHRER & BRO., INC.

Smoketown, Pa.

397-3539

DEPENDABLY YOURS
LOW PRICED GAS



We Deliver LP-Gas

No matter where you live, you can count on us to service LP-Gas needs fast and efficiently.

AGWAY

LP-GAS

AGWAY Petroleum Corporation
Box 1197 Dillerville Road

Lancaster, Pa.
Dail - 717-397-4954