

\$2525 Paid for Guernsey Cow During All-American

The first of four invitational sales at the Pennsylvania All-American Dairy Show attracted buyers from all over Central and North America.

The Pennsylvania State Brown Swiss Association assembled 26 head — all female — in the small

arena at the Farm Show and the final sales tally was \$26,235, an average of \$1,013.

The top price was paid for a four-year-old New Jersey-bred cow, "La Rainbow Delite." Sr. Fernando Batallo of Costa Rica

paid \$2,525 for the animal. Runner-up honors in the dollars sweepstakes went to a bred heifer, "L-J Stretchy Ember," from the L-J Farm, Hilliard, Ohio. The young dairy animal was bought by Bert and Ernest St. John, Glendale, Arizona for \$2,000.

The sales was under the management of Wayne E. Sliker, Flemington, N.J. Auctioneers were Don Bradley, Mechanicsburg, Ohio, and Earl Nichols, Conneautville, Pa.

Similar sales will be held for Ayrshires, Jerseys and Holsteins during the Pa. All-American Dairy Show this week in Harrisburg.

Senate Bill 1330

Interpreted by McHale

The enactment and signing into law of senate Bill No. 1330 enjoined municipalities from issuing permits or charging inspection fees, but Pennsylvania Secretary of Agriculture Jim McHale cautions that standards for milk handling have not been lowered.

"It has been brought to our attention," said McHale, "that because Pennsylvania municipalities can no longer place their inspection seals on virtually all bulk collection milk tanks sold in Pennsylvania and surrounding states, some dairy farmers have interpreted this as an easement of existing regulations."

Specifications for milk handling equipment, including tanks, are listed in the Pennsylvania Code, Chapter 59, as having to comply with current 3-A Sanitary Standards. These standards are promulgated by the International Association of Milk, Food and Environmental Sanitarians; U.S. Public Health Service and the Dairy Industry Committee.

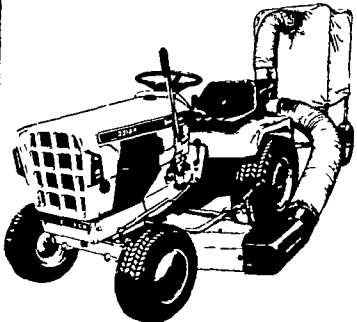
McHale pointed out that the reported departures from 3-A Sanitary Standards dealt with cooling requirements of holding tanks. Latest regulations call for automatic controls to maintain milk temperatures in a range of 35-39 degrees, F

Additionally, it is noted that cooling requirements for the municipally inspected holding tanks were based on tank capacity. 3-A Standards now rate

Try A Classified Ad It Pays!

Your life is complicated enough. We offer

Simplicity



Mow, vacuum and mulch all in one operation with the Simplicity vacuum collector that goes anywhere the tractor can. Cleans full width of the mower

Available in 8-10-15 H.P. Models

CLEARANCE ON 1972 MODELS

L. H. Brubaker, Inc.
350 Strasburg Pike
Lancaster
397-5179

cooling capability on peak load requirements. Holding tanks rate on capacity may be overrated, or worse, dangerously underrated.

FEEDER PIG SALE

SATURDAY, OCTOBER 7, 1972

2½ miles South of Bethel from US 22 and 6 miles North of Myerstown, Pa. along US 501.

400 TO 450 — 40 TO 60 LB. CHOICE FEEDER PIGS HAMPSHIRE, DUROC AND YORK CROSS

All pigs are vaccinated for Erysipelas. Castrated young. Wormed, Sprayed for Mange and Lice.

All pigs were raised on this farm. No outside pigs will sell on this sale. Also pigs will not have to be moved the day of Sale.

These are some of the finer quality feeder pigs in the East.

Sale at 1:30 P.M.

NORMAN M. MARTIN
RD1, Myerstown, Pa.

ALL DAY

CONSIGNMENT SALE FRIDAY, OCT. 6, 1972

on North Maple avenue, Leola, ½ mile North of Rte. 23. Watch for sale sign.

Variety of tractors, farm machinery, horse drawn implements, TD6 crawler, like new; 1 PR corn picker, Oliver No. 5 corn picker, New Idea No. 7 and No. 10 corn pickers, Massey Harris self propelled 2 row corn picker and others, PTO corn binder, like new; 12" Oliver 2 bottom tractor plow, John Deere cover crop disc, gravity bins, new; new and used wagons; variety of lumber 2 x 8 up to 22'; 2 x 6-2 x 4, lot tounge and grove sheeting, lot bolts and nails.

This is only a partial listing.

Sale at 9:30 A.M. by

Frank & Paul Snyder **DAVID H. GOOD**
& Robert Martin, Aucts. Ph. 656-9024

Not responsible for accidents.

SPECIAL SALE

Friday, October 6

7:30 P.M.

500 HEAD 500

Charolais, Angus and Hereford Calves and Yearling steers and heifers.

No paint marks or hip tags on any of these cattle. All cattle weighed on sale day.

Beef breeds and some Holstein steers. Sorted in uniform lots.

Regular Sale Date every Monday 2 P.M.

For Further Information Contact
J. FRANCIS TINSMAN

LEESBURG LIVESTOCK MARKET

Leesburg, Va. Phone 703-777-1411
or 703-777-3521

READ LANCASTER FARMING FOR FULL MARKET REPORTS

SEMI-ANNUAL OPEN CLASS FAT STEER SHOW & SALE

OCTOBER 12, 1972

New Holland Sales Stables Inc.

Three Classes

Angus

Hereford

Mixed Breeds

JUDGED

&

SOLD

In Lots of 6

All Cattle

Feeders

Eligible

Judging - 10 A.M.

Sale - 3 P.M.

20 Trophies Awarded To Sellers & Buyers

Entries may be registered with Abe Diffenbach, Manager

VINTAGE SALES STABLES, INC.

R.D. 1, Paradise, Pa. Box 100

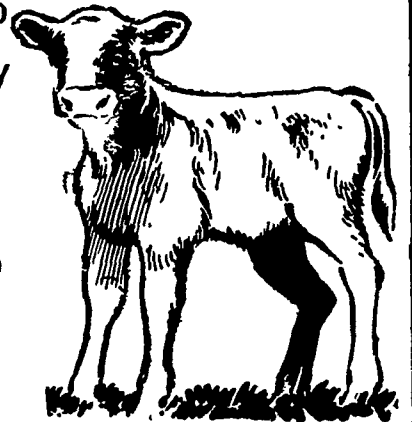
Sale Every Tuesday

STARTING OCT. 3

ATTENTION!

VEAL CALF

FEEDERS



Now you can buy U.S.D.A. graded veal calves for your feeding operation, 25 calves to a pen. Graded by weight-sex-conformation. Only calves weighing 125 pounds and lighter will be graded.

To eliminate stress on these small calves they will be unloaded, graded and weighed immediately after arrival at our auction. They will be placed in a graded pen for your inspection. Calves will be sold in pen, and stay in pen until loaded in your truck.

Vintage Sales Stables is now selling from 800 to 900 calves every Tuesday, 7:30 P.M.

If you are unable to come and purchase calves in person, order buyers can be of service to you by calling Vintage Sales Stables, 442-4181 or Kenneth E. Hershey, 442-4874.

FARM EQUIPMENT SALE

Located 1 mile South of Mountville, turn off Rte. 30 at Hershey Mill Road, Lancaster County, Pa.

SATURDAY, OCT. 7, 1972

1:00 P.M. Sharp

3 Tractors, including Farmall A with cultivator, 7 ft. IH mower; Farmall H, John Deere 50 with power steering, cultivator, tool bar; John Deere 45 loader; John Deere 24T baler; John Deere 247 2-row planter, John Deere 2-bottom 14" mtd. plow; John Deere VanBrunt Drill, IH 101 PTO spreader, IH 15 side rake, IH hay crusher (rubber rolls); IH 28 Disc, 2-16 ft. Grove wagons; Hershey 2-row transplanter, Century sprayer, New Holland 24 ft. elevator, Brillion Cultipacker, spring harrow, spike harrow, 2-20 ft. tobacco ladder wagons, 1 set of 20' ladders, 10,000 tobacco lath, 2 Minnich presses, 8 pair tobacco shears, 300 gallon water tank, walking plow, Ariens (roto) garden tractor, iron water trough, 30 ft. extension ladder, metal hay rack, ensilage cutter, platform scales, double stainless wash tubs, etc.

7 Tons Straw, a few household articles.

SALE BY
DAN S. ERB
R.D. 2
Columbia, Pa.

Diller & Kreider, Auctioneers.

Lunch by Farm Women.