

State Clarifies 'Locally Grown'

Is it illegal to advertise produce as "locally grown" or "home grown" when it was raised out of state or many miles away?

"Yes" says the Pennsylvania Department of Agriculture, which claims misuse of the words violates the state's Unfair Trade Practices and Consumer Protection Law.

Deception concerning the geographic origin of products is illegal according to the law adopted four years ago. The law also prohibits fraudulent conduct which creates likelihood of confusion or misunderstanding as to the source of goods.

State Agriculture Secretary Jim McHale said items such as strawberries, sweet corn, cantaloupes and potatoes are sometimes advertised as locally grown when they were actually grown hundreds of miles from Pennsylvania.

"This is unfair to consumers, market owners and farmers," said Secretary McHale.

"The consumer expects a superior product because locally grown produce is fresh and of high quality.

"Market owners who correctly indicate the origin of their produce are at a disadvantage. Customers will say 'why don't you have local berries; so-and-so down the road has' The customer is unaware that truly local berries will not be ready for the market for three or four weeks.

"The farmer suffers because he is frequently competing with products which sell at prices unprofitable for a person growing a quality item."

Secretary McHale said the Consumer Protection Law gives the Commonwealth the power to inspect invoices and other records when a violation of the law is suspected

Quarryville Bank Announces Branch Office

Approval of a proposed Penn Hill branch of Farmers National Bank of Quarryville has been announced by Robert K. Bruce, the bank's vice president and cashier.

The Administrator of National Banks in Washington, D.C., okayed an application by the bank's 10-member board of

directors, dated April 7 and filed with the Regional Administrator of National Banks, Philadelphia.

Ground-breaking has been scheduled tentatively for next March 1.

"We, of course, are more than pleased to be able to proceed with plans for our new facility," said Mr. Bruce. "The area has need for a national bank, it seems to us, and our hope is that it will make it worthwhile for all concerned."

To be named for its location in the Village of Wakefield, the Penn Hill office will be situated on the west side of Rt. 272 at the intersection of Rts. 272 and 222, across from the Penn Hill Friends Meeting House.

Bruce said he is now finalizing the exact plans for the building. But already known is that it will have 2,200 square feet of floor space, five teller windows, and



Robert Bruce

one drive-in window with provision for a second.

Farmers National has been in its main, Quarryville office since Sept. 7, 1971. The bank's staff comprises 22 persons.

Pests are Expensive

How vital are pesticides to U.S. food producers? According to W. C. Shaw, United States Department of Agriculture, if pesticide use was withdrawn "Farm exports would be eliminated. The number of agricultural workers currently on farms would have to be doubled. Instead of spending 17 percent of family income on food, we would be forced to devote 30 to 40 percent of our income — and perhaps even more — to provide current food needs. Without increasing the amount of land in farm crops, we could not provide food for more than 40 percent of our current population."

Escape Artist

Harry Houdini was an American magician famous for his sensational escapes from handcuffs, straight-jackets, prison cells and submerged boxes. Houdini attributed his success to his great physical strength and the fact that he was slightly bowlegged.

LANCASTER LABORATORIES, INC.

ANALYTICAL SERVICES DIVISION

Feeds, Flour, Forages, Foods
Dairy Products, Water, Waste Water
Bacteriological, Physical, Chemical

2425 New Holland Pike
Lancaster, Pa. 17601

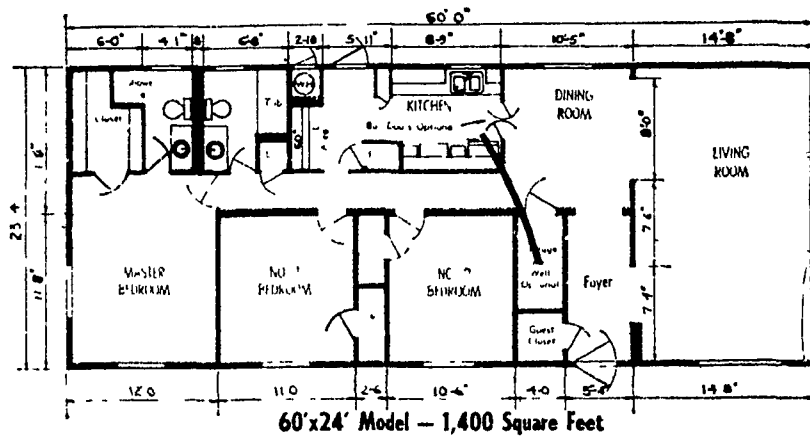
Telephone (717)656-9043 or
(717)656-9868

MORE HOUSE FOR LESS MONEY!

Paul's Can Deliver and Erect This
BIG All
24' x 60' For
Three Bedroom Home Only **\$14,900**



Expertly Designed—Superbly Built—Economically Priced



- ★ Carpet in living room, dining room, hall & master bedroom
- ★ 2 Baths
- ★ Sliding patio doors dining room
- ★ 52 gallon H.W.H.
- ★ 14 cubic ft. refrigerator
- ★ 30" Gas range
- ★ 1/4" Paneling throughout
- ★ Loads of storage space
- ★ 235# Shingled roof
- ★ Washer & dryer area
- ★ Curtains & drapes
- ★ Maintenance free exterior & interior

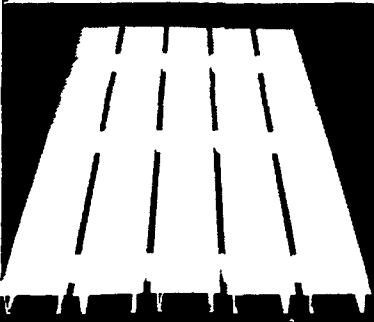
Mortgages available up to 25 years — MODEL ON DISPLAY

PAUL'S MOBILE HOMES Inc.

W. Main Street (Rt. 230) OPEN 9-9 Daily Mount Joy, Pa.
653-1476 9-5 Sat.

ALUMINUM SLATS

Big Dutchman Aluminum Slats longer life of aluminum PLUS the benefits of a new design "Positive Locking" spacers mean uniform weight distribution Non-Skid surface with no dirt collecting ridges Pre-Fab panels for easy installation Two Styles and sizes for farrowing or finishing

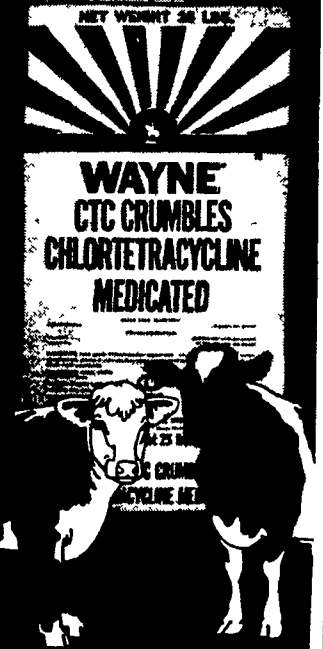


Big Dutchman.
A DIVISION OF U.S. INDUSTRIES, INC.

Eastern Branch

215 Diller Ave.
New Holland, Pa.
Ph. 354-5168

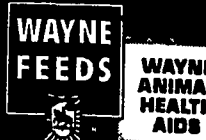
Fight infections that hold back your herd. Wayne CTC Crumbles



Turn 'em up for full returns. Wayne CTC Crumbles help reduce bacterial diarrhea, help control foot rot and liver abscesses. As little as a table-spoon per animal per day, top-dressed or mixed in the feed. CTC Crumbles add Chlorotetracycline plus Vitamins A and D. Safe for milking cows and for beef herds when fed as directed. Need a faster answer for sudden stress? Treat with Waynextra VMP Bolus. New gun makes it easier, safer. For complete information, write CTC, Allied Mills, Inc., Chicago, Ill. 60606

ALLIED MILLS

The Innovators



- ROHRER'S MILL
R.D. 1, Ronks
- JE'MAR FARM
SUPPLY INC.
Lawn — Ph.: 964-3444
- H. JACOB HOOBER
Intercourse, Pa.
- HAROLD H. GOOD
Terre Hill
- GRUBB SUPPLY CO.
Elizabethtown
- E. SAUDER & SONS
R.D. 1, East Earl
- HERSHEY BROS.
Reinholds
- WHITE OAK MILL
R.D. 4, Manheim
- MOUNTVILLE
FEED SERVICE
R.D. 2, Columbia
- DUTCHMAN FEED
MILLS, INC.
R.D. 1, Stevens
- STEVENS FEED MILL
INC.
Stevens, Pa.
- PARADISE SUPPLY
Paradise
- POWL'S FEED SERVICE
R.D. 2, Peach Bottom
- H.M. STAUFFER
& SONS, INC.
Witmer