

VINTAGE SALES STABLES, INC.

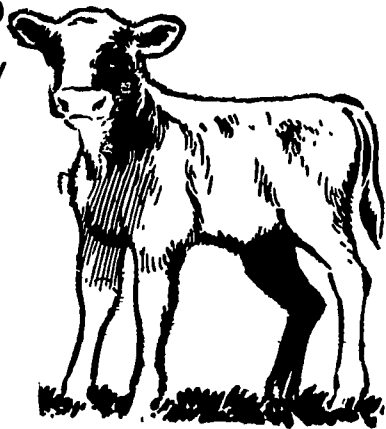
R.D. 1, Paradise, Pa. Box 100

Sale Every Tuesday

STARTING OCT. 3

ATTENTION!

VEAL CALF FEEDERS



Now you can buy U.S.D.A. graded veal calves for your feeding operation, 25 calves to a pen. Graded by weight-sex-conformation. Only calves weighing 125 pounds and lighter will be graded.

To eliminate stress on these small calves they will be unloaded, graded and weighed immediately after arrival at our auction. They will be placed in a graded pen for your inspection. Calves will be sold in pen, and stay in pen until loaded in your truck.

Vintage Sales Stables is now selling from 800 to 900 calves every Tuesday, 7:30 P.M.

If you are unable to come and purchase calves in person, order buyers can be of service to you by calling Vintage Sales Stables, 442-4181 or Kenneth E. Hershey, 442-4874.

USDA Revoking Soybean Quarantine

The U.S. Department of Agriculture is revoking the Federal soybean cyst nematode quarantine effective September 30.

Officials from USDA's Animal and Plant Health Inspection Service (APHIS) explain that infestations of the tiny parasitic worms are so widespread that the quarantine no longer serves a useful purpose.

The quarantine restricted the interstate movement from regulated areas of soil, root crops, soil-moving equipment, nursery stock and other items that might spread the pest.

The soybean cyst nematode attacks soybeans, snap and adzuki beans, lespedeza, common vetch and lupine. APHIS' action removes Federal regulations from all States previously under quarantine—Arkansas, Florida, Illinois, Indiana, Kentucky, Louisiana, Mississippi, Missouri, North Carolina, Tennessee and Virginia.

At present, the only practical method of control is crop rotation and the use of resistant varieties in certain areas. APHIS scientists say that individual farmers are capable of continuing these types of control programs without Federal assistance.



Eugene E. Eby (seated, left), H. R. Wentzel Sons, Inc., Newport, begins a term as president of PennAg Industries Assoc. on January 1, 1973, replacing John J. Hess II of Paradise (seated, right). Eby was elected at the association's annual meeting earlier this month. Others elected to serve, and their offices, are (left to right): Jay Wolgemuth, director, Wolgemuth Brothers, Inc., Mt. Joy; P. M. Spalding, 2nd vice-president, York Flour Mills, York; Melvin M. Wenger, 3rd vice-president, Wenger's Feed Mill, Rheems; Robert B. Graybill, Pennfield Corporation, Lancaster.

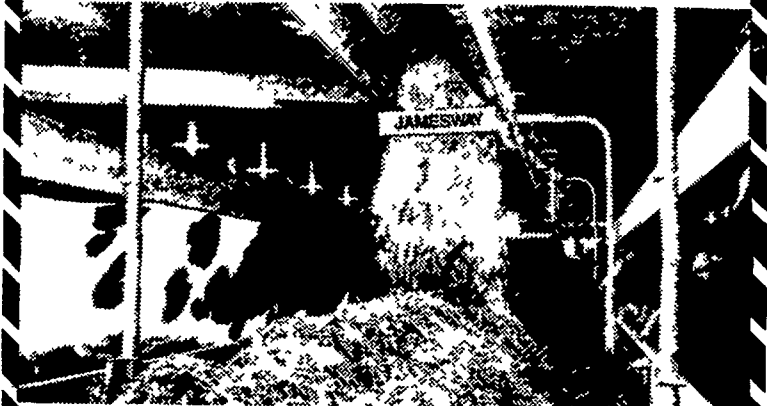
Help Us Serve You

Don't assume we know about your farm organization's meeting. To get your meeting on our Farm Calendar, it's safer to assume we don't know.

Remind us by calling 394-3047 or 626-2191 or by writing to Lancaster Farming, 22 E. Main St., Lititz, Pa. 17543. You'll be helping us to serve you better.

P.S. — If you're not sure you told us already, we don't mind hearing from you again.

JAMESWAY Volume-Belt Cattle Feeder



Feeds Fast without Separation



- * Only 1-1/2 hp. Up to 250 Feet
- * Big Capacity Belt Carries Feed
- * Works In-Barn or Out

Stop In Today for Free Catalog.

YOU CAN COUNT ON US

M. E. SNAVELY

445 South Cedar St., Lititz, Pa. 17543 Ph. 626-8144

MORE FROM
MORIARTY
 SUBSIDIARY, WICKES CORP.

Clear-Span BUILDINGS

- Professionally engineered structures, wide clear spans.
- Rust-free aluminum or corrosion-resistant steel siding and roofing. Beautiful colors.
- Free planning service.

COMPARE OUR QUALITY.
 CHECK OUR LOW PRICE.

EPHRATA, PA.
 (717) 733-2312

For local service, call 717-733-7750



For Interior Farm Buildings

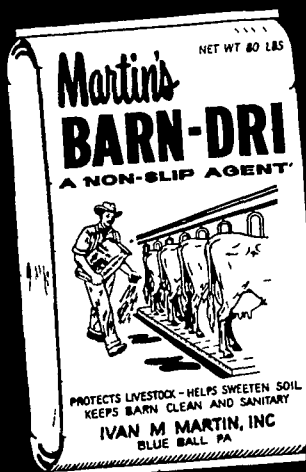
- Does not rub or flake off
- Is really white
- Cleans off windows and stalls easily

Spraying

APPLIED BY
RICHARD R. FERRY

2020 Horseshoe Rd. Ph. 717-397-0035
 Lancaster Penna.

Protects livestock



keeps barns
 clean & sanitary

MARTIN'S BARN-DRI

Use in any stable or animal pen that has a tendency to become slippery when wet.

- Cow Stables and Runways
- Hog Pens
- Sheep Stables
- Dog and Cat Kennels
- Chicken Houses
- Other damp areas

See your local dealer.

IVAN M. MARTIN, INC.

SEE OUR DISPLAY
 of
FARM AND LAWN EQUIPMENT
 at the

EPHRATA FAIR

(TENT CITY)

DURING FAIR WEEK
 SEPT. 26 THRU 30

OLIVER — FOX — GEHL SATOH
BOLEN — G.E. ELECTRAK — HOMELITE

FARMERSVILLE EQUIPMENT INC.

R.D.2 Ephrata, Pa.
 Located in Farmersville

Ph. 354-4271

STORE HOURS:
 MONDAY & THURSDAY 7 A.M. - 9 P.M.
 TUESDAY, WEDNESDAY, FRIDAY 7 A.M. - 6 P.M.
 SATURDAY 7 P.M. - 5 P.M.