

Space Science Helps Earthlings Supply Utilities

Two fuel cells from outer space have come to earth in Brooklyn, where they are chemically transforming natural gas into electricity, quietly and efficiently.

The cells, recently installed as a test in a New York home, were developed jointly during the past five years by Pratt & Whitney Division of United Aircraft Corp., and 33 natural gas companies as a part of a \$50 million research program which stretches from coast to coast. One of the sponsoring companies is Brooklyn Union Gas, which is conducting tests in New York City. The fuel cells are modifications of the powerplants which provided electricity for the Apollo moon flights.

The natural gas fuel cell, an on-site electric generator, consists of two units: one contains a reformer that breaks down natural gas into hydrogen and carbon molecules and converts the carbon into carbon dioxide and the other is the fuel cell itself, which generates electricity electrochemically when the gas mixture enters. The second unit converts the resulting direct current to alternating current.

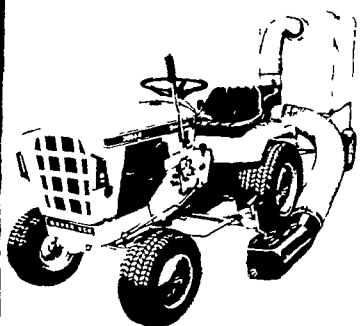
Natural gas fuel cells could mean lower fuel costs since they convert 40 per cent of gas energy into power and operate one-third more efficiently than a typical central power station, according to Gordon C. Griswold, president of Brooklyn Union Gas. During the latter half of 1971 and through 1972 up to 60 additional Powercells are scheduled for installation by various gas and pipeline companies at 37 locations in 19 states and the District of Columbia.

Antibiotic

Penicillin was the first antibiotic to become available. In 1941 it was first employed in the treatment of human disease and, by 1943 its clinical value was fully established.

Your life is complicated enough. We offer

Simplicity



Mow vacuum and mulch all in one operation with the Simplicity vacuum collector that goes anywhere the tractor can. Cleans full width of the mower.

Available in 8-10-15 H.P. Models

CLEARANCE ON 1972 MODELS

L. H. Brubaker, Inc.

350 Strasburg Pike
Lancaster
397-5179

Industry Adopts Guidelines For Children's TV Shows

Guidelines for television advertising to children have been adopted by the Association of National Advertisers to help stimulate high standards of advertising and eliminate practices which might be even remotely considered distasteful, misleading or unduly "high-pressure."

The guidelines are based on the following four principles:

Since young children have limited capabilities for discerning the credibility of what they see, they pose a special responsibility for advertisers and broadcasters alike to protect them from

their own susceptibilities.

Recognizing that children are limited in their ability to distinguish between fact and fantasy, care should be taken not to stimulate (directly or by implication) unreasonable expectations of performance.

Because of the special nature of the children's audience, extra care should be taken to communicate product information in a truthful and tasteful manner.

Advertising should help develop social standards that are generally regarded as positive and beneficial

SPECIAL SALE FRIDAY, SEPTEMBER 15

7:30 P.M.

500 HEAD 500

Charolais, Angus and Hereford Calves and Yearling steers and heifers.

No paint marks or hip tags on any of these cattle. All cattle weighed on sale day.

Beef breeds and some Holstein steers. Sorted in uniform lots

For Further Information Contact
J. FRANCISTINSMAN

LEESBURG LIVESTOCK MARKET

Leesburg, Va. Phone 703-777-1411
or 703-777-3521

IVAN Z. SENSENIG REGISTERED & HIGH GRADE HOLSTEIN DISPERSAL SALE

Will be sold at Public Sale on the premises located 5 Miles North of Ephrata on Schoeneck Road, at Schoeneck turn East toward Denver, 1/2 mile on right. Watch for Sale Arrows.

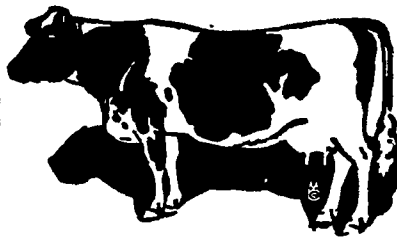
THURSDAY, SEPT. 14, 1972

AT 12:00 NOON

41 HEAD OF HOLSTEIN DAIRY CATTLE

24 Dairy Cows in all Stages of Lactation

5 HEIFERS
DUE THIS FALL
8 BREEDING AGE
2 YEARLINGS
2 CALVES



ALL A.B.C. BREEDING. HEALTH CHARTS DAY OF SALE. CHECKED FOR PREGNANCY

HAWK BILT TANK SPREADER
Left Side Unload, Used Only 3 Years

If In Need Of Dairy Cows, Plan Now To
Attend This Sale

Sale time, 12:00 Noon. Terms by Owner

IVAN Z. SENSENIG

R.D.1, STEVENS, PA.
215-267-6491

John E. and Paul E. Martin, Auctioneers
733-3511 — 733-3305

Not Responsible for Accidents

PUBLIC SALE

The undersigned will offer for Public Sale, at their Farm, located 5 miles North of Bedford, at Camp Sunshine, off Route 220 at Bedford Grange Hall, in Bedford County, Pa.

THURSDAY, SEPTEMBER 14

1972, STARTING AT 12:30 P.M.

HOLSTEIN CATTLE

Consisting of 46 head of good grade Holstein cows, 7 fresh or close springers, 22 have freshen since July 15, balance in other lactation, health charts available day of sale.

MILKING EQUIPMENT

Consisting of a 400 gal. Jamesway bulk tank with Walker seak, DeLaval No. 75 milker pump, 4 Surge milker units, Kesco dumping station, Sunset automatic tank washer and other items.

TERMS: CASH

Mr. & Mrs. Melvin Stahl
R.D. 1, Bedford, Pa.

Claycomb & Mishler, Auctioneers
Lunch Served

We Specialize in Liquidation Sales of All Kinds
Farm Machinery, Construction Equipment and Land

FARM MACHINERY AUCTION SALE

Tractors and Farm Machinery

Exit 10 or 11 off Interstate 83 Emigsville, Pa.

September 15, 1972

at 10 o'clock A. M.

SALE RAIN OR SHINE

York Co. Farm & Ind. Equip. Co. Inc.

4 Miles North of York, Pa. on Route 181
Box 222 Emigsville, Pa. 17318
Phone: 717-764-6412

If you have machinery not suitable for your trade, bring it to our sale and turn it into ready cash. If you need machinery of any kind you will find it here at our sale.

We Welcome You as a Buyer, Seller or Visitor.

50 HEAD REGISTERED and GRADE 50

CANADIAN and WISCONSIN HOLSTEINS

ANOTHER SELECT QUALITY REGISTERED AND GRADE HOLSTEIN SALE

at Black and White Holstein Farm, Lancaster, Pa. across from the Comet Drive-in Theatre or 1/4 mi. west of breeding unit

on

Friday Night Sept. 15 at 8 o'clock Sharp.

Selling 50 head of registered and grade Canadian and Wisconsin Holsteins of large size, good type and lots of milking quality. All cows fresh or Close-up springers

Farmers and dairymen, if you are in the need of top quality herd replacements you cannot afford to miss this sale. They are all purchased first hand from farms where they were raised by some of the best judges of dairy cows in the business. If you need a can of milk per day or 100 lbs per day we have the cows for you. Just by all means get to this sale.

CHARLES C. MYERS
OWNER

Abe Diffenbach: Auct.
Henry Kettering: Pedigrees

Credit available: Contact Charles Myers prior to sale.