

# DHIA Monthly Reports

(Continued From Page 13)

| Owner - Name         | Breed | Age  | Days | Milk   | Test | Fat |
|----------------------|-------|------|------|--------|------|-----|
| Glenn E. Burkholder  |       |      |      |        |      |     |
| Sparkler             | RH    | 5-9  | 284  | 16,237 | 3.9  | 627 |
| Virginia             | GrH   | 4-3  | 305  | 15,968 | 3.9  | 621 |
| John & H. Farrington |       |      |      |        |      |     |
| Jane                 | RH    | 8-10 | 305  | 17,267 | 3.6  | 625 |
| Joseph DeLong        |       |      |      |        |      |     |
| 32B                  | GrH   | 5-1  | 305  | 15,697 | 4.0  | 625 |
| D. George Beiler     |       |      |      |        |      |     |
| Princes              | RH    | 8-9  | 305  | 16,746 | 3.7  | 624 |
| H. Landis Weaver     |       |      |      |        |      |     |
| Crystal              | RH    | 5-11 | 305  | 16,656 | 3.7  | 624 |
| H. Richard Hershey   |       |      |      |        |      |     |
| Patsy                | RH    | 5-2  | 305  | 17,070 | 3.6  | 623 |
| J. Douglas Martin    |       |      |      |        |      |     |
| 38                   | RH    | 6-5  | 305  | 16,419 | 3.8  | 621 |
| Amos M. Lapp         |       |      |      |        |      |     |
| Marie                | RH    | 6-1  | 305  | 16,095 | 3.9  | 621 |
| George R. Baltozer   |       |      |      |        |      |     |
| 66                   | GrH   | 4-4  | 305  | 15,656 | 4.0  | 621 |
| J. S. Stauffer Jr.   |       |      |      |        |      |     |
| Suzanne              | RH    | 5-8  | 305  | 19,175 | 3.2  | 620 |
| Jonas E. Fisher      |       |      |      |        |      |     |
| Pearl                | GrH   | 7-3  | 305  | 18,815 | 3.3  | 620 |
| Cletus A. Balmer     |       |      |      |        |      |     |
| Ruth                 | RH    | 7-1  | 305  | 14,958 | 4.1  | 620 |

### HIGH DAILY BUTTERFAT AVERAGES

| Name              | Breed | Days On Test | No. Cows | Cow Days In Milk | Milk Lbs. | % Test | Fat Lbs. |
|-------------------|-------|--------------|----------|------------------|-----------|--------|----------|
| Edwin K. Wise     | RH    | 21           | 28.4     | 89.4             | 51.2      | 3.6    | 1.86     |
| Amos E. King Jr.  | RH    | 28           | 28.1     | 94.9             | 47.2      | 3.9    | 1.84     |
| Dale E. Hiestand  | RH    | 34           | 29.7     | 89.7             | 44.8      | 4.0    | 1.78     |
| Paul B. Zimmerman | RH    | 26           | 32.5     | 81.5             | 46.1      | 3.9    | 1.78     |
| J. Z. Nolt        | RH    | 28           | 38.1     | 82.5             | 47.0      | 3.8    | 1.77     |
| Titus B. Stoner   | R&GrH | 28           | 25.4     | 85.5             | 47.9      | 3.7    | 1.76     |

# Pennsylvania Dairy Show

## Slated for Sept. 25-29

The Ninth Annual Pennsylvania All-American Dairy Show will be held at the Farm Show Building in Harrisburg, September 25 through 29, under the joint sponsorship of the Pennsylvania Dairy and Allied Industries Association and the Pennsylvania Department of Agriculture.

Prime interest in this event in the past has been among dairy

farmers and it has attracted exhibitors from all sections of the country and Canada. This year, Secretary of Agriculture Jim McHale says, an effort will be made to attract more visitors both from non-exhibiting area farmers and from the non-farming community.

Among those innovations expected to draw attention from consumers are daily tours by

greater Harrisburg area elementary students, Family Day activities on Sunday, Sept. 24 and daily "railbird" cattle judging contests.

Twice each day during the All-American Dairy Show a class of ten dairy cattle will be presented for all show visitors to "place," that is arrange them numerically on a scorecard from 1 to 10. The results will be checked on a computer and a trophy presented to the winner of each class.

Other new events for the Ninth Annual Dairy Show includes an Ayrshire Sale, in addition to the established Holstein, Jersey and Brown Swiss sales. A brother to a bull calf that brought \$41,000 at last year's Holstein sale has been consigned to this year's auction.

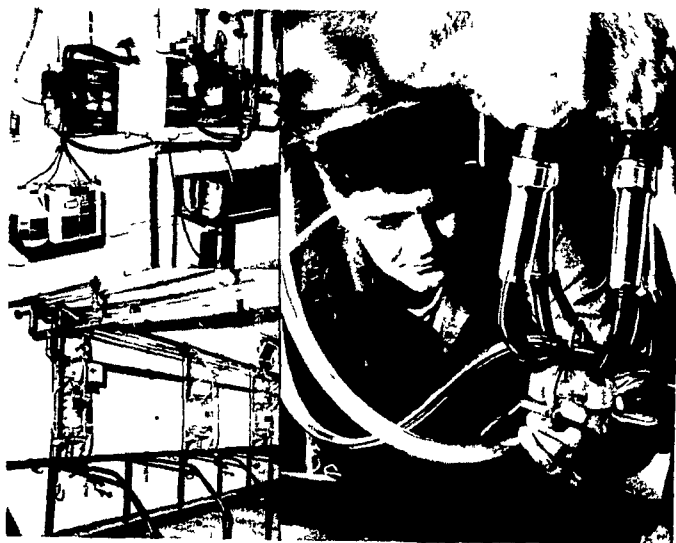
The mid-week banquet will find the crowning of the 1972 state Dairy Princess sharing billing with a meeting of the National Dairy Shrine Club, the first ever to be held in Pennsylvania in the 23 year history of the club. A contemporary dairy leader will be named Guest of Honor while a group of pioneers will be recognized posthumously for their contributions to the industry.

A special educational program has been set up for Thursday, Sept. 28, for exhibitors and all area dairymen to deal with the waste problems peculiar to dairying.

The week-long activities will open with the Invitational Youth Judging Contest for state champion 4-H and F.F.A. teams and an intercollegiate competition. The concluding event on Friday is the All-American Holstein Show.

Entries close August 25, 1972 with late registration accepted through Sept. 6 if they are accompanied by an additional fee.

# AGWAY



### Milk faster, more efficiently! AGWAY STA-RITE PIPELINE MILKING SYSTEM

Let your Agway man show you how a Sta-Rite pipeline system can help maintain milk quality; reduce bacteria counts; get easier, more thorough cleaning; and cut down on expensive man-hours. There's a Sta-Rite system for every requirement!

### No guessing about milk flow! AGWAY STA-RITE FULL-VIEW MILKER

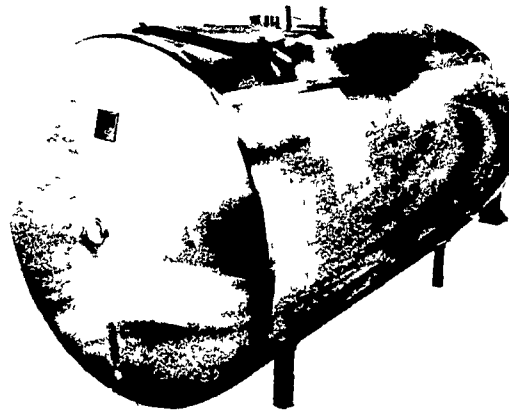
You see instantly when to remove the teat cup from each quarter. You get a visual check on milking performance, prevent over-milking, help protect cows from the possibility of machine induced mastitis. (52-1007)

## SPECIAL SAVINGS

FREE! 4 sets of inflations for each milker unit when you buy a complete milking system. Offer ends Sept. 30, 1972



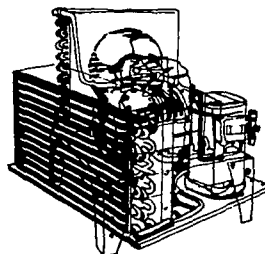
2 1/2 and 3" STAINLESS STEEL MILKING LINES AVAILABLE!



More capacity, same space!

### SUNSET MILK COOLERS

Now you can add capacity without adding floor space. Choose from 300 to 3000 gal. sizes. Stainless steel on sizes up to 1250 gal., vinyl jacket on all larger sizes. All welded construction for low maintenance, long life



### D/B CONDENSING UNITS

Built for efficiency, rugged use, easy service and long life. All the features you need for many years of dependable operation.



### SUNSET BULK TANK WASHER

Self-contained Can be readily installed on any type bulk tank. Operates economically on small amount of detergent. Assures uniform cleaning results. (52-0011)

**\$485<sup>00</sup>**



## SUPPLY CENTER

1027 DILLERVILLE ROAD, LANCASTER

24 HOUR SERVICE DAILY

PH: 717-397-4761

## Ag Dept. Issues

### Post Flood Study

The Pennsylvania Department of Agriculture has issued its first monthly "post flood" report on inspections carried out by agents of the Bureau of Foods and Chemistry, Division of Food Control.

Nearly 43,000,000 pounds of food with an estimated value in excess of \$25 million was condemned or disposed of voluntarily.

The enormity of the task stands out in sharp detail when compared with the same figures for the entire fiscal year which included several days of the emergency inspection. During that time only a little more than 2,000,000 pounds of food was condemned with a value of about \$2 million.

Secretary of Agriculture Jim McHale said the huge clean-up job was accomplished by developing food inspectors and other Department personnel from four of the Commonwealth's seven regions which escaped the heavy flooding in the wake of tropical storm Agnes.

The federal Food and Drug Administration also dispatched more than a score of its food inspectors into the affected area to work with the Pennsylvania Department of Agriculture in safe-guarding food supplies during the critical days immediately after the waters receded.