



Noah W. Wenger, R.D. 1, Stevens, member of the Pennsylvania State Committee for the Agricultural Stabilization and Conservation Service recently attended the National Conference of ACS State Committeemen in Washington, D.C. Committeemen were briefed by Secretary of Agriculture, Earl L. Butz and his staff on the latest developments in U.S. crop

production and farm programs. Butz is second from the left and Wenger is at the far right. Others in the photo are left to right): Kenneth H. Boyer, State Executive Director, Pennsylvania State ASC Committee; Butz; Williard Kimmel, Chariman Pennsylvania State ASC Committee; Claude Hetherington, Member Pa. State ASC Committee; Wenger.

### Appliance "Tingle" Dangerous Sign

That little "tingle" one sometimes feels while touching an electrical appliance is most likely a danger sign, cautions June Wilke, Chester County Extension home economist. Don't ignore this warning.

Many electrical appliances develop electrical leakage from the interior electrical parts to the frame or case of the appliances.

The "leaky" appliance may operate normally, but under certain conditions a person using the appliance while in contact with a ground such as a water pipe or other grounded equipment could receive a severe shock. The "tingle" or slight shock you sometimes get means that your body is not completely grounded. Heed this warning!

A faulty appliance should be inspected to detect obvious leaks such as bad insulation on the cord or heating elements which have moved out of position. The more difficult cases require the expert services of an appliance repairman.

The best way to eliminate the possibility of this type of shock is to ground the frame of the electrical equipment. This may

be done in a variety of ways: the simplest being the use of a three-wire cord properly connected to the appliance and to the wall outlet.

The third wire in the cord

serves as a connection between the appliance frame and the building electrical grounding system. A leak in an appliance connected in this manner should cause the circuit fuse to blow. This immediately eliminates the possibility of shock to the operator.

### John Deere Dealers Plan Open Houses

Local John Deere Dealers have scheduled open house for all farmers in this area on Saturday, August 19. They will unveil Generation Two, the biggest advance in tractors since John Deere introduced the New Generation Tractors twelve years ago.

The new line was introduced to all John Deere dealers during a

meeting at Waterloo, Iowa. A spokesman for John Deere says dealer enthusiasm was very high, particularly after they had operated the new tractors.

He added that it will be to every farmers advantage, especially from a health and comfort standpoint, so plan to attend the open houses and learn all the facts about the new John Deere Tractors.

## PUBLIC SALE INVENTORY REDUCTION SAT. AUG. 12, 1972 12:00 NOON

HARDWARE-NEW & USED, APPLIANCES-LAWN & GARDEN EQUIPMENT-CHAIN SAWS-BICYCLES, MINI-BIKES.

SPECIAL SAVINGS THROUGH  
OUT STORE DURING SALE

40 x 100 Black Plastic Silo Cover \$28.50  
225 Amp. Lincoln Welders \$89.95

**FARMERSVILLE EQUIPMENT INC.**

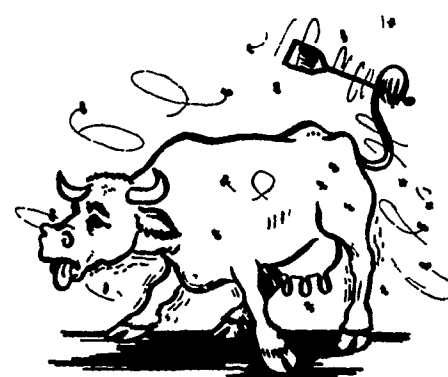
R.D.2 - EPHRATA, PA.  
LOCATED IN FARMERSVILLE, PH. 354-4271



# PUBLIC ENEMY NO. 1

Your Local Red Rose Dealer can help you rid your premises of this creature. We have a fly control program to fit every farmers need.

- Golden Malrin Sugar Bait
- Fatal Fly containing Diptorex
- Kleen-Kow  
Containing Vapona  
Direct Spray
- Cygon 2-E Residual Spray
- Simax-Back Rubber Concentrate



We also stock a complete selection of herd health needs.

**FOR PROMPT COURTEOUS SERVICE STOP AT YOUR LOCAL RED ROSE DEALER TODAY.**

**Red Rose**  
ANIMAL FEED



**YOUR LOCAL INDEPENDENT RED ROSE DEALER**

IN QUARRYVILLE AREA

**RED ROSE  
FARM SERVICE, INC.**

MAIN OFFICE  
N. CHURCH ST.  
QUARRYVILLE, PA.  
786-7361

BUCK, PA.  
284-4464

IN ATGLEN AREA

**BROWN & REA, INC.**

ATGLEN, PA.  
215-593-5149

• **MORE MILK • MORE MEAT**  
• **MORE PROFIT**  
WITH

**MADISON SILOS**

• Feed high-quality, nutritious, corn and grass silage all year for more milk, more meat and more profit

• Low original cost  
• Low upkeep cost  
• More than 60,000 Madison Silos in use



**Madison Silos**

Div. Martin Marietta Corp.  
1070 Steinmetz Rd.  
Ephrata, Penna. 17522  
Ph. 733-1206

**LOCAL DEALERS**

Frank Snyder  
Akron 859-2688

Caleb Wenger  
Quarryville 548-2116

Landis Bros. Inc.  
Lancaster 393-3906

Carl L. Shirk  
Lebanon 867-3741

Sonnenberger Farm Supply  
Centerport, Pa.  
Ph. 215-926-7671