

Poultry Market Reports

Fogelsville

Tuesday, July 25

(Prices paid dock weights, cents per pound, except where noted).

Hens, heavy type 5-7; Pullets 20½-31½; Roasters 20-30½; Ducks 35-39; Rabbits 15-41; Guineas 1.03-1.21; Pigeons (per pr.) 75-3.65.

Total coops sold 159. Auction every Tuesday. Poultry received Monday 7 P.M. to 10:30 P.M., Tuesday 7 A.M. to 12 Noon. Sale at 11:30 A.M.

Eastern Pa. and N.J. HENS

Wednesday, July 26

Prices held unchanged on light type hens Farm offerings increased and generally adequate for a fair demand though occasional plant still not operating full time Offerings of heavy hens ample for a listless demand. Prices paid at farm: Light type hens 5-9 mostly 8½-9 in Pa., mostly 8-9 in N.J. Heavy type hens 12-13

Delmarva

BROILERS

Wednesday, July 26

Ready-to-cook movement improved though still no better than fair. Slaughter schedules reduced in some quarters while about steady at others Advance interest developing well at levels ½ to 1 cent below this week. Less than trucklot prices trending lower. Live supplies fully adequate though weights declining due to heat wave of past week. Undertone unsettled. Negotiated trucklot prices 2-3 pound ready-to-cook broiler-fryers for delivery next week: U.S. Grade A - Plant Grade 27.

Pool trucklot prices for Thursday arrival: U.S. Grade A 29-31½ M 29-29½; Plant Grade 28-29½ M 28-28½.



sustain top production with the **BABCOCK B-300**

Keeping production up... costs down... is the profit key in poultry operations. And more and more records on commercial flocks of Babcock B-300's... "The Businessman's Bird"... show sustained production of top quality eggs... often with an additional 20 to 30 eggs per bird housed over other strains. Come in... look at the records and the B-300... "The Businessman's Bird".



BABCOCK FARMS, INC.
Telephone (717) 626-8561

Weekly New York Egg Market

(From Monday, July 24th to Friday, July 28th)

	Mon.	Tues.	Wed.	Thurs.	Fri.
WHITE					
Fcy. Ex. Large	40½	40½	40½	39	38
Large	37½	37½	37½	36	35
Mediums	34½	34½	34½	33½	33
Pullets	27	27	27	27	26
Peewees	16	16	16	16	16
BROWN					
Fcy. Large	41	41	41	41	41
Mediums	Unquoted				
Pullets	Unquoted				
Peewees	Unquoted				
Standards	31	31	31	30	29
Checks	16-16½	16-16½	16-16½	16-16½	16½

Long Tone - Improvement still building on this poor movement into retail outlets in many areas.

New York Eggs

Wednesday, July 26

Price levels mostly unchanged. Demand slow on large whites and mediums, slow to just fair on extra large whites and browns. Numerous small lot sales limited to day to day need as buyers experience some uncertainty on adequate refrigeration with delivery orders stepped up but volume is decreased. Supplies and offerings of large plentiful, mediums fully adequate with consignment offerings increasing. Jumbos about adequate, extra large fully adequate locally and about adequate for carton orders. Undertone unsettled with confirmed carton orders slow to develop.

Omaha Cattle

Thursday, July 27

Compared to previous weeks close, closing price on Slaughter Steers fully 25c lower, heifer 25-50c lower. Most decline on Average-Choice and Prime. Cows weak to 25c lower. Bulls steady. Feeder supply mainly fleshy two-way steers prices weak to 50c lower.

Four day receipts 10,800 head as compared 16,900 the previous week and 17,300 a year ago. Slaughter steers approximately 39 per cent, heifers 35 per cent, cows 8 per cent, and feeders 15 per cent. Fed cattle prices under pressure early and for the third week in a row, closing prices were lower. Sharply lower price trends early influenced by declining prices at the wholesale carcass level. Buyers made a determined effort to bring live prices in line with carcass realizations. However, a forced trade developed later on the very meager supply offered locally and a large part of the early decline was regained by mid-week.

STEERS: Eight loads High-Choice and Prime 1112-1253

New Holland Horse Auction

Monday, July 24

Reported receipts of 226 head of horses; market steady with last weeks market.

Load Ohio riding horses, 110-340.

Load Kansas riding horses, 100-265

Locally consigned work horses, 155-180; riding horses, 90-205; driving horses, 85-260; few better horses, 210-325; Mules Killer way; Killers, 5-7.

Mare Ponies, 5-25; Geldings, 5-20; Colts, 5-8; Larger Ponies, 35-50.

pounds 3-4 38.25-38.75. At the close, Choice 975-1250 2-4 37.25-38.25. Mixed Good and Choice 975-1250 36.50-37.25. Good 32.25-36.50. Standard and Low-Good 31.50-32.00.

Average cost slaughter steers first three days 36.52 average weight 1100 pounds as compared 37.93 and 1115 pounds previous week and 32.33 and 1080 pounds a year ago.

HEIFERS: Early in the week, seven loads Choice and Prime 3-4 902-1025 pounds 36.75-37.00, one load 1035 pound 37.25 late. At the close, Choice 850-1025 2-4 36.00-37.00. Mixed Good and Choice 750-975 35.00-36.00.

COWS: Utility and Commercial 25.00-26.00, a few Utility Dairybreds 26.50-27.00. Canner and Cutter 23.00-25.00, Mixed Cutter and Low-Utility 25.50-25.75. Shelly Canner 21.50-22.50.

BULLS: Utility, Commercial and Good 28.00-32.50, Commercial 1-2 33.00. Cutter and Low-Utility 25.00-28.00.

Two loads Choice 637-813 pound steers 40.25-41.00. Two part loads Choice 802-862 38.25-38.35. High-Good and Choice 880-1079 36.00-37.25, mostly 36.25-37.00.

Load Choice 498 pound heifers 42.50, a few lots Choice 792-877 35.50-36.50. Part load Good and Choice 823 pounds 34.75.

Commonwealth National Agri-Loan Corp.



A subsidiary of Commonwealth National Bank

Serving Agriculture in

South Central Pennsylvania

Member FDIC

Oklahoma City

Thursday, July 27

Estimated Receipts 12,300
Same Day Last Week 9,686
Same Day Last year 8,683

Windy, hot and dry: fairly active, feeder cattle and calves generally steady compared to last Thursday; waterfills offsetting any noticeable loss in price; majority receipts Good and Choice 400-800 pound steers and 275-650 pound heifers; large attendance buyers.

Sales As Of 12:30 PM

FEEDER STEERS—Few small lots Choice 300-400 pound 53.50-54.00; Choice, few Prime 400-500 48.00-52.00, part load 422 pound at 53.25; 500-600 44.50-48.00; 600-700 42.75-45.00; 700-800 39.75-43.00, load 724 pound at 43.20; 800-900 39.00-40.50; Mixed Good 500-600 pound 43.00-45.50; 600-700 40.75-42.00; 700-750 37.75-38.50; Good 380-500 42.00-49.00; 500-600 39.50-42.75; 600-800 36.85-41.00; two small lots 800-836 pound 35.50-37.05; mostly Good 580-625 Holstein Steer 34.30-35.30; 700-800 33.50-34.70.

FEEDER HEIFER: Few small lots Choice 300-400 pound 42.00-49.50; 500-600 38.50-41.00, small lot 502 pound at 43.60 and part load 511 pound at 44.40; 600-675 37.50-39.00, part load 710 pound at 36.20; Mixed Good and Choice 385-500 38.50-41.50; 500-700 35.50-37.50; Good 425-550 34.75-38.50; few 600-808 34.50-35.25.

Fix-It Tip

For good lawn care, in addition to a mower you will need a broom lawn rake and hand trimming shears. An edger makes for a neater lawn but you can slice the edge of the turf fairly well with the edge of your square spade.

Feeder Sales

Winchester, Virginia

Friday, July 21

There were 588 head sold; all cattle state graded and sold by the hundredweight.

Steers

Choice and Fancy: 500-700 pounds 41.00-42.25; 705-800 40.75-41.25; 805-1,000 37.25-41.25.

Good: 500-700 pounds 38.75-44.25; 705-800 38.50-40.25; 805-1,000 36.25-40.00.

Medium: 500-700 pounds 36.00-42.25; 705-800 35.00-38.25; 805-1,000 36.50-37.75.

Common: 705-800 pound 34.75; Short: 691 pounds 36.50.

Heifers

Choice and Fancy: 500-600 pound 37.25; 605-700 36.00-37.75; 705-850 32.50-36.75.

Good: 500-600 pounds 36.25-37.50; 605-700 36.25-37.00; 705-825 31.75-34.50.

Medium: 400-500 pounds 34.25-35.50; Common: 605-700 33.50; Short: 460-667 32.25-35.25.

LANCASTER FARMING

Lancaster County's Own Farm Weekly

P.O. Box 266 - Lititz, Pa. 17543
Office: 22 E. Main St., Lititz, Pa. 17543

Record-Express Office Bldg.
Phone: Lancaster 717-394-3047 or Lititz 717-626-2191

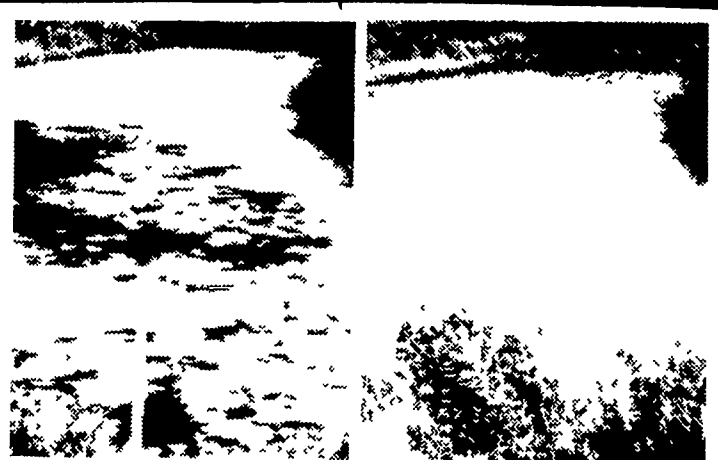
Richard E. Wanner, Editor
Subscription price: \$2 per year in Lancaster County; \$3 elsewhere

Established November 4, 1955

Published every Saturday by Lancaster Farming, Lititz, Pa

Second Class Postage paid at Lititz, Pa. 17543

Members of Newspaper Farm Editors Assn., Pa. Newspaper Publishers Association, and National Newspaper Association.



CUTRINE Made The Difference

Lakes and ponds like the one above (left) needn't be spoiled by the odor and scum of algae or threatened by the harmful, even lethal, effect it can have on fish, animals and humans.

CUTRINE, used as directed, controlled the algae in the pond (right) in just a few days.

CUTRINE can make the difference in your lake or pond. It has been thoroughly tested and proven in actual field use. CUTRINE is registered by the Environmental Protection Agency for use in fish, farm and fire ponds; lakes; fish hatcheries — even in POTABLE WATER RESERVOIRS.

CUTRINE

No waiting to:
SWIM
FISH

P. L. ROHRER & BRO., INC.

Smoketown, Pa.

Ph. 397-3539