

DHIA Monthly Reports

Lancaster Farming, Saturday, July 29, 1972—15

(Continued From Page 14)

Wilbur N. Erb 18	RH	6-8	299	18,076	3.4	619
Hiram S. Aungst Ivy	RH	8-10	305	15,873	3.9	619
Ben S. Stoltzfus Whity	GrH	7-2	290	15,815	3.9	618
Paul N. Brubaker 20	RH	5-8	286	15,022	4.1	618
96BS	RBrSw	5-9	305	14,508	4.2	611
Jay C. Garber Gylee	RH	5-0	288	11,977	5.2	618
John B. Stoltzfus Rachel	GrH	4-2	292	14,283	4.3	615
LeRoy S. Smucker Posch	RH	4-3	249	14,027	4.4	615
Alvin J. Stoltzfus Dot	RH	4-4	300	17,053	3.6	614
Elvin H. Hess Cheryl	GrH	3-10	302	16,663	3.7	614
Heidi	GrH	3-10	305	14,727	4.2	614
Stanley E. Kreider Amy	GrH	3-11	305	16,115	3.8	613
Marvin K. Witmer Bonnie	RH	6-8	305	16,936	3.6	611
Melvin R. Stoltzfus Clara	GrH	4-11	305	16,504	3.7	611
Ivan S. Stoltzfus Burke	RH	3-4	305	14,750	4.1	611
John & Elam Rutt Susie	RH	5-0	305	16,462	3.7	610
Beulah	RH	4-0	305	15,349	4.0	610
Ivan M. Hursh Jean	RH	2-6	305	14,540	4.2	610

Raymond & Richard Barge ART2121	GrH	5-9	289	14,126	4.3	610
J. Scott Wolff Glory	RH	7-0	305	13,776	4.4	610
Raymond & Louise Witmer Sara	RG	4-6	305	11,973	5.1	610
HIGH DAILY BUTTERFAT AVERAGES						
John & H. Farrington RH	33	32.9	92.4	53.6	3.7	2.00
Dale E. Hiestand RH	29	29.0	96.1	50.8	3.9	1.96
Red Rose Research Center RH	29	27.9	91.8	47.6	4.0	1.92
Edwin K. Wise RH	33	27.7	81.4	50.9	3.8	1.91
Paul B. Zimmerman RH	29	32.2	81.9	49.3	3.9	1.91
Samuel I. Esh R&GrH	30	26.0	91.2	52.3	3.6	1.90
Titus B. Stoner R&GrH	31	26.0	85.1	50.5	3.8	1.90
Henry E. Kettering RH	30	52.3	93.1	45.4	4.2	1.89
J. Harold Musser & Son R&GrH	28	53.0	90.0	49.4	3.8	1.89
Robert F. & Jona B. Book RH	37	50.7	91.7	51.8	3.6	1.87
Glenn C. Hershey RH	28	30.0	97.0	45.5	4.0	1.83
J. Z. Nolt RH	33	36.4	85.0	49.6	3.6	1.81
Lloyd E. Miller R&GrH	28	22.0	95.1	50.8	3.6	1.81
Ben K. Stoltzfus R&GrH	34	30.2	95.5	50.8	3.5	1.80
Amos E. King Jr. RH	33	26.7	89.1	48.1	3.7	1.79

Pa. Milk Production Down 7 pct. in June

The number of cows in Pennsylvania's dairy herds remained steady during June but milk production dropped seven per cent from May and was two per cent off from a year earlier, according to a recent state report.

The Pennsylvania Crop Reporting Service said the fall from a record 950 pounds per cow in May to 880 per cow in June was a normal seasonal decline.

Total production for June was 610,000,000 pounds, about 70,000,000 gallons. This is down 15,000,000 pounds from June, 1971 but there were 9,000 more cows at that time.

The prices paid farmers in June was \$6.45 per hundredweight, down five cents from a month earlier but still 45 cents per hundredweight higher than June, 1971.

U. S. milk production in June was over 11 billion pounds, an increase of two per cent from the same month last year. Pennsylvania ranks fifth in milk production.

New Cooperators

The Lancaster County Soil and Water Conservation District announce the following new cooperators:

Sylvan S. King, Paradise RD1, Paradise Township, 64 acres; William O Good, Paradise RD1, Paradise Township, 48 acres; John M Hurst, Quarryville RD3, Bart Township, 43 acres; John C. Howett, Conestoga RD1, Conestoga Township, 35 acres; Robert S. Wohlsen, Lititz RD4, Warwick Township, 24 acres, and Grace Ann Chase, 26 E. 4th Street, Quarryville, Eden Township, 400 acres.

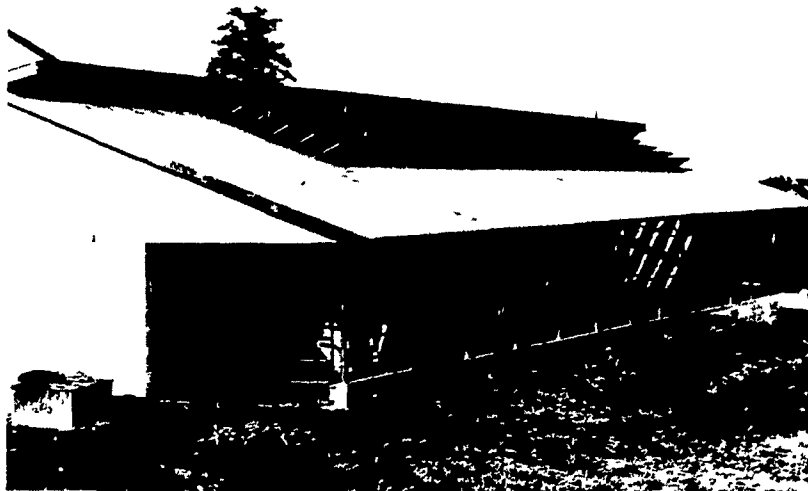
PUT YOURSELF INTO THE FUTURE!
LET THE SUNSHINE IN WITH...

SOLAIR SYSTEMS

SOLAIR COW BAY WITH THE "SUN SENSOR"

FEATURES THE FOLLOWING:

1. Storm-and fire-resistant construction
2. Rapid evaporation and dehumidification through "solar thermo" circulation
3. Engineered for expansion.
4. Designed for either beef or dairy cattle.
5. Straight line scrape areas.
6. "Quick dry" floor areas.
7. North side ventilation—summer only.
8. Three sided wall structure—open South.
9. "Jalousie type" Southern roof provides direct sun rays on 80 per cent of floor — OPTIONAL.
10. "Sun Sensor" control automatically opens and closes optional jalousie roof for maximum winter comfort
11. Complete herd grouping accommodations
12. Automated feed control.

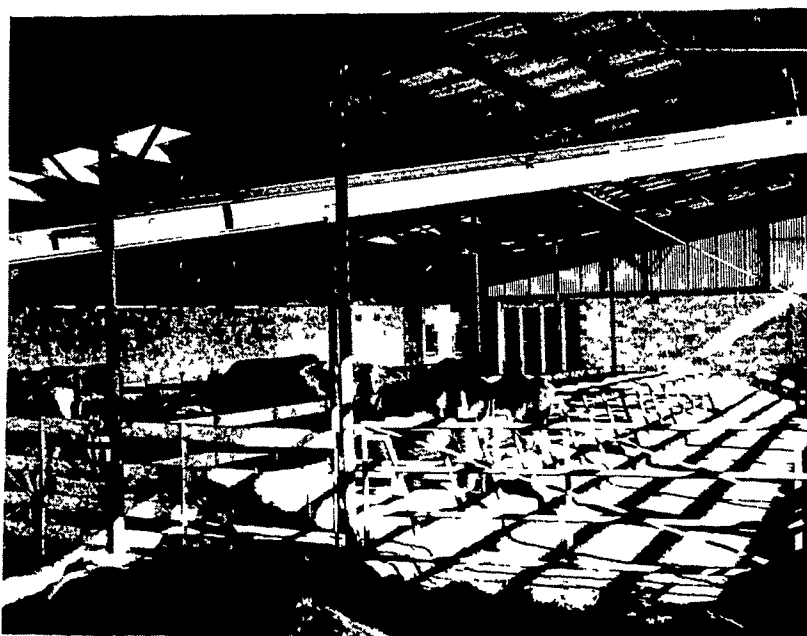


WE'RE INTERESTED IN ECOLOGY!

With our completely covered lots and a sun roof with an open peak, rain water does not enter the bay area and maximum evaporation of animal liquids is obtained. An "all-drained" floor system is installed and a curbed fence line keeps manure in place to be scraped into a liquid pit or a push-off loading system. By preventing manure run-off the surrounding area is not polluted.

Yes, since your urban neighbors and government fathers are interested in ecology, we are ready to help you build a system that will put you ahead on the pollution problem

And, low moisture levels in Solair Systems results in less bacteria action and fewer odors.



DISTRIBUTORS FOR:

- VAN DALE, INC.
- VAUGHAN
- PAMLINE
- MADISON SILOS
- MECHANIZED FEED LOT SYSTEMS

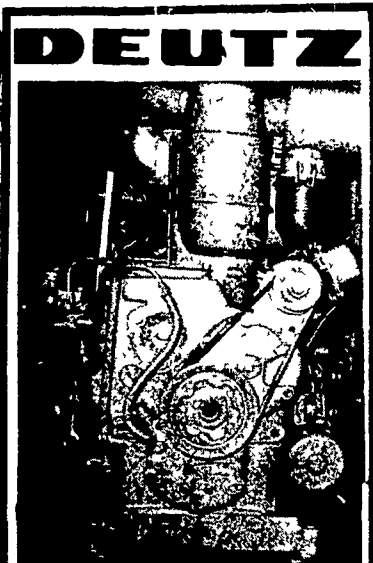
CALEB M. WENGER, INC.

R. D. 1 DRUMORE CENTER, QUARRYVILLE, PA.

PHONE 548-2116

Call Us Now

To serve the Lancaster County farm community better, we maintain two phone ers and advertisers can also reach us through 626-2191 (ask for Lancaster Farming) and avoid a toll call from the Akron, Ephrata and Manheim exchanges.



FIL-812
**USED DEUTZ
DIESELS FOR SALE**
1-Model FIL-812, 10 HP at 1800 RPM. Rebuilt, 90 day warranty. Price with stubshaft

\$600.00

Phone: 354-4181

**STAUFFER
DIESEL, INC.**

312 W. Main St.
New Holland, Pa. 17557