

Hog Prices

Lancaster Market

Monday, July 17
Barrows and Gilts steady to 25 higher.
BARROWS AND GILTS—US 1 205-240 lbs. 31.00-31.50; US 1-2 200-240 lbs. 30.25-30.75; US 2-3 190-260 lbs. 29.75-30.00.

Lancaster Auction

Wednesday, July 19
Barrows and Gilts 75-1.00 lower.
BARROWS AND GILTS—US 1 215-240 lbs. 30.00-30.50; US 1-2 210-235 lbs. 29.35-29.60; US 2-3 190-250 lbs. 29.00-29.35.

New Holland Auction

Monday, July 17
HOGS 1180: Barrows & Gilts: Mostly steady. US No. 1-2 200-240 lbs. 30.35-31.60; US No. 1-3 200-245 lbs. 29.85-30.35; US No. 2-4 240-275 lbs. 28.50-29.85; US No. 2-4 150-190 lbs. 28.00-29.85.
Sows: US No. 1-3 300-600 lbs. 22.50-25.00.
Boars: 20.50-23.00

U. S. Inspected Livestock Slaughter

Estimated Daily Livestock Slaughter Under Federal Inspection

	CATTLE	HOGS	SHEEP
Week to Date	472,000	1,988,000	154,000
Same Period last Wk.	479,000	1,085,000	154,000
Same Period last Yr.	485,000	1,145,000	153,000

Vintage Auction

Saturday, July 15
HOGS 930: Barrows & Gilts: steady to weak.
US No. 1-2 200-230 lbs. 30.00-30.75; US No. 1-3 195-245 lbs. 29.25-30.10; US No. 2-4 245-260 lbs. 28.35-29.35; US No. 2-4 140-185 lbs. 27.50-28.35.
Sows: US No. 1-3 255-505 lbs. 22.35-23.35.
Boars: 20.25-23.50.

Tuesday, July 18
Barrows and Gilts 50-75 lower.
BARROWS AND GILTS—US 1 200-240 lbs. 29.85-30.00; US 1-3 195-255 lbs. 29.25-29.75, mainly 29.50-29.75

Indianapolis Auction

HOGS—1500. 50-1.00, mostly 75-1.00 higher, active US 1-2 200-235 lbs. 29.75-30.00 22 head 30.15 1-3 200-260 lbs. 29.25-29.75

St. Louis Auction

HOGS—4500. 50 higher US 1-2 200-230 lbs. 29.75-30.00; 1-3 200-250 lbs. 29.50-29.75.

Peoria Auction

HOGS—3000, active, fully 50-75 instances 1.00 higher US 1-2 200-235 lbs. 29.50-30.00; 1-3 200-260 lbs. 28.75-29.50.

Lebanon Valley Auction

Tuesday, July 18
330 Head Hogs
Barrows and Gilts weak to 50c higher.
BARROWS AND GILTS: U.S. 2-3 200 - 240 pounds 29.95 - 29.60; 2-4 185 - 250 28 50 - 29.10.
SOWS: U.S. 2-3 300 - 500 pounds (few) 21.25 - 22.50.
BOARS: (Few) 20.00 - 21.50.
17 Head Feeder Pigs
Couple lots U.S. 1-3 25 pound 12.50 per head.

Omaha Cattle

Thursday, July 20
Compared to last week's close, closing prices on slaughter steers 25-50 lower. Heifers weak to 75 lower, large share 50 lower, most decline on Good and Low-Choice. Cows 25-50 lower. Bulls steady. Feeder supply fully steady under good demand.

Four day receipts 17,000 as compared 16,300 previous week and 19,000 a year ago. Slaughter steers approximately 42 per cent, heifers 35 per cent, cows 8 per cent and feeders 12 per cent. For the second week in a row slaughter steer and heifers prices closed lower. Although prices advanced moderately early in the week, Wednesday's sharp decline more than wiped out the early upturn to push prices to the lowest level in four weeks. The decline was triggered by expanded receipts at midweek and declining prices at the wholesale carcass level.

STEERS: Thirteen loads High-Choice and Prime 1030-1295 pounds 3-4 39.25-39.50. Fourteen loads same grade 1078-1333 39.00-39.25. Three loads late 1300-1335 38.25-38.50. At midweek, eleven loads 1001-1208 3-4 38.75-39.00. Choice 975-1250 2-4 closed 37.50-38.50. Mixed Good and Choice 950-1225 37.00-37.50. Good 33.00-36.75. Standard and Low-Good 31.50-33.00.

Average cost slaughter steers first three days 37.95 average weight 1114 pounds as compared 37.98 and 1117 pounds previous week and 32.02 and 1105 pounds a year ago.

HEIFERS: Eleven loads High-Choice and Prime 916-1054 3-4

Futures Trading

(Closing bids as of Thursday, July 20)

	Chicago Cattle	Chicago Hogs	New York Maine Potatoes	Chicago Fresh Eggs
July		30.40		30.95
August	36.67	28.80		31.10
September				35.80
October	34.67	26.72		37.00
November			3.58	41.10
December	34.85	27.30		42.10
January '73				41.10
February	35.65	27.22		40.75
March			4.14	
April	35.47	25.05	4.33	39.00
May			5.08	
June	35.15	25.70		
July		25.90		

Trend - Cattle are stronger, Hogs are stronger, Potatoes are stronger and Eggs are weaker.

a-asked b-bid n-normal
Markets provided by Commodity Dept., Reynolds Securities, Inc.

38.00. Eight loads same grade 859-953 37.60-37.75. Choice 825-1025 2-4 closed 36.25-37.25. Mixed Good and Choice 750-975 35.00-36.00. Good 31.50-35.00. Standard and Low-Good 29.50-31.50.

COWS: Utility and Commercial 25.25-27.00. Canner and Cutter 23.00-25.25. Mixed Cutter and Low-Utility 25.25-25.50. Shelly Canner 21.50-22.50.

BULLS: Utility, Commercial and Good 28.00-32.50. Commercial 1-2 33.00. Cutter and Low-Utility 25.00-28.00.

FEEDERS: Outshipments of 2,400 as compared 2,300 previous week. Demand good for fleshy two-way steers, prices fully steady.

Two part loads Choice 622-709 pound steers 38.00-42.00. Two loads Choice 976 pounds 38.50. High-Good and Choice 866-1105 36.50-38.00. Standard and Low-Good 1135 pound Holsteins 32.25.

Part load Choice 581 pound Heifers 38.00. High-Good and Choice 765-949 34.50-36.00. Load Good and Choice 817 pounds 33.50.

Peoria Cattle

Thursday, July 20
Receipts this week: 4,600; last week 4,800; last year 1,800. Slaughter steers ended mostly 25-50 higher than the previous week. Slaughter heifers closed steady to 25 higher. Cows and bulls were unchanged. Supply consisted mainly of High Good and Choice slaughter steers and heifers, with several loads Choice to Prime; balance of receipts mainly cows.

SLAUGHTER STEERS: High Choice and Prime 1225-1345 pounds 3-4, 39.00-39.75. One load on Monday at latter price. Mixed Choice and Prime 1175-1370 3-4, 38.50-39.25. Choice 975-1325 2-4, 37.50-39.00. Mixed Good and Choice 950-1225 36.50-37.75. Good 32.75-36.75. Standard to Good Holsteins 32 25-33.50.

SLAUGHTER HEIFERS: High Choice and Prime 900-1000 pounds 3-4, 37.50-38.00. Mixed Choice and Prime 865-1000 3-4, 37.00-37.50. Choice 800-1025 2-4, 36 00-37.25. Mixed Good and Choice 750-950 34.25-36.25. Good 31.50-34.25.

COWS: Commercial 24.00-25.50. Utility 24.50-27.00. Cutter 22.75-26.00. Canner 20.00-22.75. Shelly-Canner 15.00-20.00.

BULLS: Utility and Commercial 29.00-33.00.

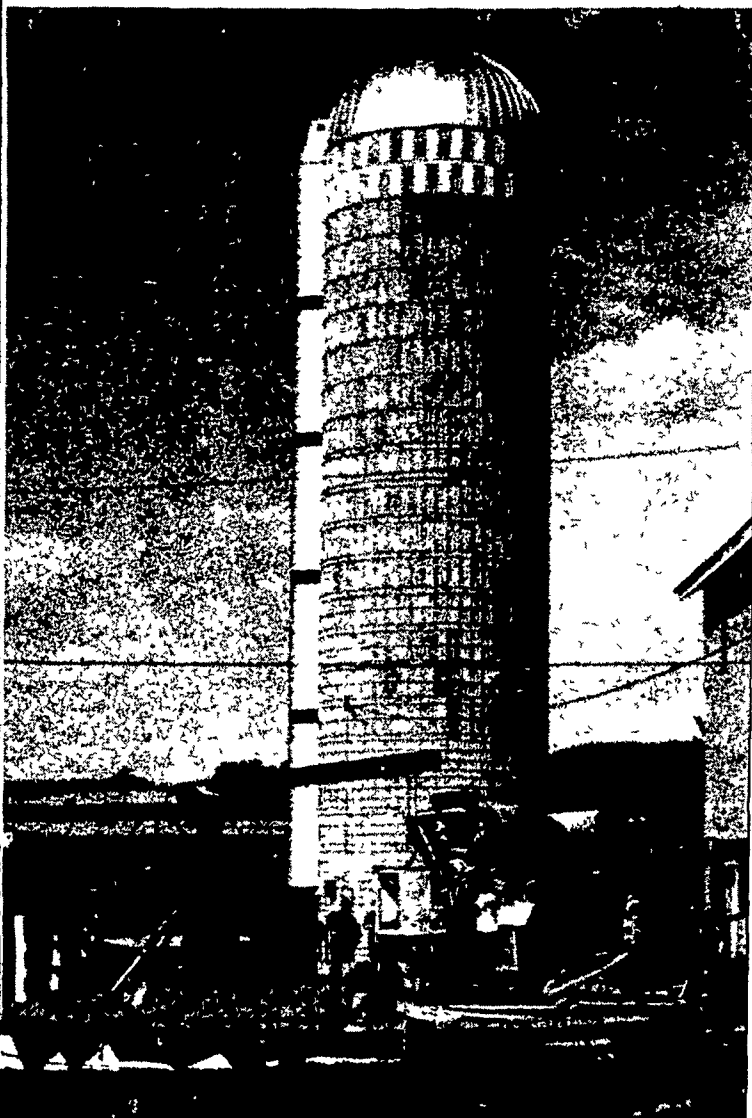
Green Dragon Hay Market

Friday, July 14
21 loads hay, including one load Alfalfa 35.00; few loads Timothy 26.00-58.00; Mixed hay 29.50-57.50.
10 loads straw 35.50-44.00
One load corn 51.00.

LEBANON VALLEY LIVESTOCK MARKET, INC.

1 mile east of Fredericksburg along Route 222
PHONE JONESTOWN 865-2881
Sale every Tuesday at 1:30 P.M. starting with feeder cattle and pigs.

TERRE HILL SILOS TRI-RIB CONCRETE STAVE SILOS



More Quality More Strength More Economy

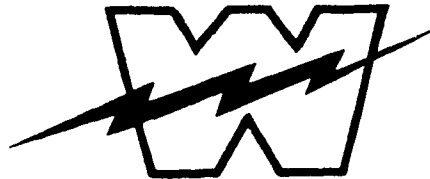
Silos Bunk Feeders
Silo Unloaders Liquid Manure Tanks

Call or write for free information

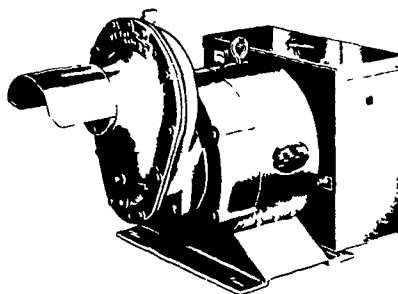
TERRE HILL SILO CO., Inc.

Terre Hill, Pa. 17581 Phone 215-445-6736
Quality & Service Since 1927

WINPOWER



TRACTOR DRIVEN ALTERNATORS



INSURE YOUR FARM OPERATIONS AGAINST POWER OUTAGES HAVE EXPERIENCED PEOPLE INSTALL & SERVICE.

CALL NOW



ELECTROMECH
ELECTROMECHANICAL SERVICE
ROUTE 222, EPHRATA, PA. 17522
PHONE (717) 733-7911

ELECTRIC MOTOR • GENERATOR • POWER TOOL SPECIALISTS

WORLD'S LARGEST MFG. OF TRACTOR-DRIVEN ALTERNATORS

PTO Units Available From 7 KW to 60 KW 20 Year Warranty

POWER WHEN YOU NEED IT MOST

1800 RPM

INSIST on a FREE WINPOWER DEMONSTRATION at YOUR Farm Before You Buy ANY Tractor Driven Alternator

L. J. EDWARDS
FARM SALES, Manager

LP-NATURAL GAS GASOLINE DIESEL ENGINE GEN. SETS TO 200,000 WATTS