

Hog Prices

New Holland Auction

Monday, July 19

HOGS 1140: Barrows & Gilts: Steady to 25c higher. US No. 1-2 200-240 lbs. 30.25-31.50; US No. 1-3 200-245 lbs. 30.00-30.25; US No. 2-4 230-260 lbs. 29.00-30.00; US No. 2-4 150-190 lbs. 28.00-30.00.

Sows: US No. 1-3 300-550 lbs. 23.00-25.00.

Boars: 22.50-23.75.

Lancaster Market

Monday, July 10

Barrows and Gilts strong to 50 higher; Sows scarce.

Barrows and Gilts: US 1 205-240 lbs. 31.00-31.50; US 1-2 200-240 lbs. 30.00-30.50; US 2-3 190-260 lbs. 29.50-30.00.

Lancaster Auction

Wednesday, July 12

Barrows and Gilts mostly steady.

Barrows and Gilts: US 1 215-230 lbs. 31.50; US 1-2 200-235 30.25-30.75; US 2-3 200-240 lbs. 29.85-30.25; 250-270 lbs. 29.60-29.85.

Indianapolis Auction

Hogs 1500.

Barrows and Gilts in early sales fairly active at best 25 to 50 lower. Supply primarily US 1-3 210-250 lbs.

Barrows and Gilts: 1-2 200-230 lbs. 30.00-30.25; 1-3 200-250 lbs. 29.50-30.00, mostly 29.75-30.00; 2-3 240-270 lbs. 28.75-29.50.

Sows: Poorly tested on short

supply, generally steady to 25 lower. 1-3 350-600 lbs. 23 75-24.00; Few lots 300-350 lbs. 24.00-24 75

Lebanon Valley Auction

Tuesday, July 11

285 Head Hogs

Barrows and Gilts mostly steady to strong.

Barrows and Gilts: U.S. 1-2 210-220 pounds (couple lots) 30.50 and 30.60; 2-3 200-230 29.60-30.00; 2-4 200-260 28.60-29.60; 2-4 160-175 28.00-28.35.

Sows: U.S. 2-3 250-500 pounds 21.00-23.00.

Boars: (Few) 21.00-22.50.

37 Head Feeder Pigs

U.S. 1-3 20 pounds (one lot) 14.00 per head; 45 pounds (one lot) 22.75 per head.

Vintage Auction

Saturday, July 8

HOGS 806: Barrows & Gilts: Steady to 25c higher. US No. 1-2 200-240 lbs. 30.10-30.60, few to 31.00, US No. 1-3 200-240 lbs. 29.50-30.35; US No. 2-4 190-260 lbs. 28.75-29.00; US No. 2-4 125-165 lbs. 26.00-28.00.

Sows: US No. 1-3 330-585 lbs. 22.75-24.25.

Boars: 22.60-23.25.

Tuesday, July 11

Barrows and Gilts 25-50 higher.

Barrows and Gilts: US 1 200-240 lbs. 30.60-31.10; US 1-3 195-255 lbs. 30.00-30.50.

Peoria Auction

Hogs: 3000 Trading active.

Barrows and Gilts opening mostly 25 higher. Receipts mainly US 1-3 200-240 lbs US 1-2 200-230 lbs, 29 75-30.00; about 150 head at 30 25. US 1-3 200-250 lbs., including few down to 190 lbs 29 25-29.75.

Sows strong to mostly 25 higher on wts. under 450 lbs, heavier wts. steady US 1-3 300-450 lbs 24.00-24.50, pkg. around 300 lbs 24.75. US 2-3 450-600 lbs. 23.50-24.00.

Boars: 23 25-23.75.

St. Louis Auction

Hogs 4,000.

Barrows and Gilts rather slow, weak to 25 lower. Demand poor to fair US 1-2 200-230 lbs. 30.00-30.50; US 1-3 200-240 lbs. 29.75-30.00; US 2-3 240-270 lbs. 29.00-29.75; US 2-4 260-280 lbs 28.00-29.00; US 2-4 280-300 lbs 27.50-28.25; few US 3-4 27.00-27.50.

Sows steady to 25 lower 10 percent. US 1-3 300-400 lbs. 24.00-25.00; US 2-3 400-650 lbs 23.25-24.00.

Boars steady to 50 higher 22.00-23.00 few 23.50.

Regional Hay Prices

Monday, July 10

(All hay No. 2 and better, prices paid by dealers at the farm price per ton.)

Better quality hay steady to strong. New straw prices not fully established.

Alfalfa	25.00-35.00
Mixed hay	25.00-28.00
Timothy hay	20.00-25.00
New straw	20.00-26.00
Mulch	12.00-17.00

Green Dragon

Hay Market

Friday, July 7

16 loads hay, including: Couple loads Alfalfa, 28.50 and 44.50; few loads Timothy, 33.50 - 45.50; few loads Mixed hay, 31.50 - 46.50.

8 loads straw, 34.00 - 41.00

Couple loads corn, 44.00 and 49.00.

Huge Clams

Individual geoduck clams more than eight inches long are fairly common, while the record weight is about 16 pounds, of which only a small part is shell.

Lancaster Farming, Saturday, July 15, 1972—3

Futures Trading

(Closing bids as of Thursday, July 13)

	Chicago Cattle	Chicago Hogs	New York Maine Potatoes	Chicago Fresh Eggs
July		30.12		29 00
August	37 80	28 95		31 70
September				37 85
October	35.65	26.65		38 35
November			3.65	42.10
December	35.60	27.45		
January '73				
February	35 82	27.00		
March			4.05	
April	35 60	24.85	4.25	
May			4.95	
June		25.80		
July		25.60		

Trend — Cattle are steady, hogs are lower, potatoes are stronger and eggs are weaker.

a-asked b-bid n-normal

Markets provided by Commodity Dept., Reynolds Securities, Inc.

Local Grain

Thursday, July 13

These prices are made up of the average prices quoted by six participating local feed and grain concerns. It should be noted, however, that not every dealer handles each commodity. All prices are per bushel, except for ear corn which is per ton.

The average local grain prices quoted Thursday, July 13, 1972, are as follows:

	Bid+	Offered+
Ear Corn	39.33	45 66
Shelled Corn	1 39	1 59
Oats (local)	68	93
Oats (western)	1.01	1.14
Barley	.99	1 27
Wheat	1.45	1 66

+Bid is the price the dealer will buy from the farmer delivered to the mill. Offered is the price the dealer will sell for at his mill.

Oklahoma City

Thursday, July 13

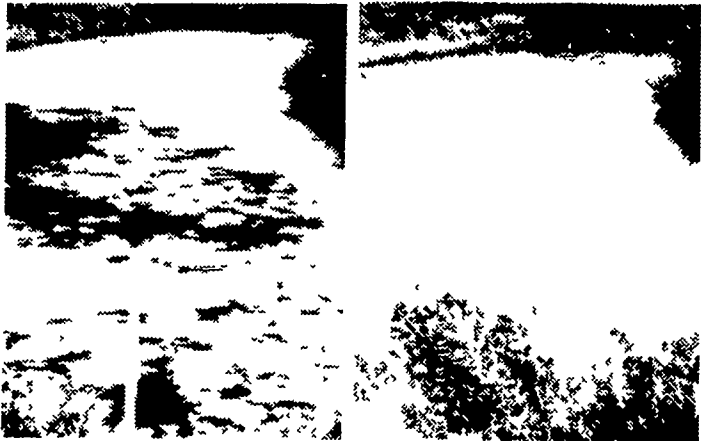
Estimated Receipts	10,000
Same Day Last Week	5,906
Same Day Last Year	13 897

Fairly active, compared to late last week, feeder heifers and feeder calves generally steady, feeder steers over 500 pound steady to mostly 50c lower with fleshy offerings at the full decline. Majority receipts 400-750 pound steers and 400-650 pound heifers with High Good and Choice grades predominating. Fairly large attendance buyers; demand fairly broad for all weights and grades with best action centering on thin fleshed cattle suitable to go on grass

Sales as of 12:30 P.M.

FEEDER STEERS: Two small lots and short load Choice 334-342 pound 52.50-57.75; 400-500 46.00-54 30, 500-600 44.50-47 00, 600-700 42.75-44.25, 700-800 39 75-43 00; few 800-900 39.00-41 75, Mixed Good and Choice 386-500 44.50-47.50; 500-600 43.25-45 00, 600-800 39 00-42 50, few 800-875 37.00-38 00; Good 575-700 39.00-40.00; two lots and short load mostly Good 591-895 Holstein Steers 33 10-34.70,

FEEDER HEIFERS: Three small lots Choice 299-388 pound 42 25-44.10, 400-500 40 00-46 00, short load 400 pound at 47 40; 500-600 38.50-41 40, small lot 500 pound at 42.10, 600-700 37.00-39 50; few 700-808 36.45-37.00, Mixed Good and Choice 393-500 38.00-41 75; 500-700 36 00-38 25; few Good 365-500 36.00-37 25, 584-602 33 40-35.20.



CUTRINE Made The Difference

Lakes and ponds like the one above (left) needn't be spoiled by the odor and scum of algae or threatened by the harmful, even lethal, effect it can have on fish, animals and humans.

CUTRINE, used as directed, controlled the algae in the pond (right) in just a few days.

CUTRINE can make the difference in your lake or pond. It has been thoroughly tested and proven in actual field use. CUTRINE is registered by the Environmental Protection Agency for use in fish, farm and fire ponds; lakes; fish hatcheries — even in POTABLE WATER RESERVOIRS.

CUTRINE

No waiting to:
SWIM
FISH

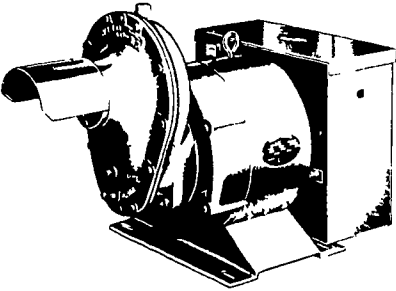
P. L. ROHRER & BRO., INC.

Smoketown, Pa.

Ph. 397-3539



**TRACTOP DRIVEN
ALTERNATORS**



INSURE YOUR FARM OPERATIONS AGAINST POWER OUTAGES. HAVE EXPERIENCED PEOPLE INSTALL & SERVICE.

CALL NOW



ELECTROMECH

ELECTROMECHANICAL SERVICE

ROUTE 222, EPHRATA, PA. 17522

PHONE (717) 733-7911

ELECTRIC MOTOR • GENERATOR • POWER TOOL SPECIALISTS

**WORLDS LARGEST
MFG. OF
TRACTOR-DRIVEN
ALTERNATORS**

PTO Units
Available From
7 KW to 60 KW
20 Year
Warranty

**POWER
WHEN YOU NEED
IT MOST**

1800 RPM

INSIST on a FREE
WINPOWER DEMONSTRATION
at YOUR Farm

Before You Buy ANY Tractor
Driven Alternator

L. J. EDWARDS

FARM SALES, Manager

LP-NATURAL GAS
GASOLINE
DIESEL
ENGINE GEN.
SETS TO
200,000 WATTS

LEBANON VALLEY LIVESTOCK MARKET, INC.

1 mile east of
Fredericksburg
along Route 222

**PHONE JONESTOWN
865-2881**

Sale every Tuesday at
1:30 P.M. starting with
feeder cattle and pigs.