

## Summer Institute Delegates Selected

Fourteen outstanding local boys and girls have been named winners in the Cooperative Business Education Program sponsored by the Chester-Delaware Council of Farmer Cooperatives and will represent this area at the Pennsylvania Association of Farmer Cooperatives Summer Institute at Shippensburg State College, July 9-13.

Those chosen to attend the Institute are: Miles Arnold, II, Modena, William G. Nunn, Jr., Cochranville, Dale Nafziger, Phoenixville, W. Hosea Latshaw, Spring City, Howard J. Stoltzfus, Glen Moore, Pamela Taws, Paoli, Libby Ekdahl, West Chester, and Carl Yoder, Elverson as first-year scholars.

Michael Mowrer, Spring City, Stanley Guest, Pottstown, Vernon D. Umble, Christiana, Janet McAllister, Oxford, Cynthia Tompkins, Kennett Square, and Frank Mast, Elverson will be agribusiness explorers who return to the Institute as second-year scholars.

Winners were selected on the basis of their knowledge of the cooperative way of doing business and on activities of the participants identifying them with school, community, church, and youth organizations.

These young leaders will be accompanied to Shippensburg by John H. Schwartz, assistant Chester County Agricultural Agent, who will act as chaperone

and resource person for the delegation.

The Institute program is designed to teach youth more about the business enterprise system in America, to help them in planning their future by pointing out career possibilities in agribusiness, and provide opportunities for individual leadership development.

## Air Drop of Gypsy Moth Traps Begun

Three federal-state agencies have begun a joint experiment designed to stop the spread of the Gypsy Moth in fringe or lightly infested areas.

Beginning last week a massive air drop of Gypsy Moth traps was undertaken in two separate areas of the Commonwealth by the Pennsylvania Department of Agriculture, USDA and the entomology department, Penn. State University College of Agriculture.

The first drop was in two 14 square-mile plots in Rothrock State Forest, northern Huntingdon County covering parts of Jackson, Barree and Miller Townships. The other area will cover 20 square miles where US

## Helping Small Business Pays Big Dividends

After an eleven-year hitch in the Navy, Bernard S. Browning set aside his duffel bag, and decided to lend a hand to the small business man.

With a three-man staff he started General Business Services, Inc. in Washington, D.C. to show others how to keep accurate, uncomplicated books and to develop effective billing and collection systems.

Today, ten years later,

GBS has the largest staff under one roof of any non-government organization and a field staff of some 725 in 48 states.

Mr. Browning attributes his success to what he calls his ten steps to the top—**Preparation:** whatever you do, apply yourself. **Imagination:** look at old things new ways. **Dedication:** if you don't enjoy your work, get into something else. **Curiosity:** how did successful people get where they are? **Incentive:** if you're not born with it, develop it. **Drive:** do your job, and then some. **Toughness:** obstacles are not

stop signs. **Confidence:** you can be sure, and if you're not, you should be. **Friendship:** never forget one or neglect one. **Planning:** don't trust to chance what chance may not trust to you.

### My Neighbors

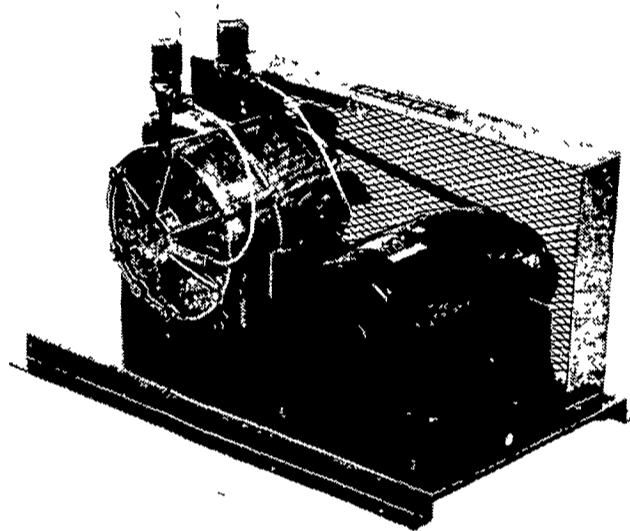


"Thanks—I really needed that!"

## READ LANCASTER FARMING FOR FULL MARKET REPORTS

### De Laval's new rotary Vacuum Pump is the problem-solver!

You get -  More CFM per H P  More CFM per electricity dollar  
 Maintenance-free, cool-running operation  Metered fresh oil from visible-supply jars  Rapid recovery, constant vacuum with all milkers on the line. A checkup beats a breakdown tonight. Call us!



Model 78

**J. B. Zimmerman & Sons**

Blue Ball, Pa.

Call 354-2481

## NEW 720 FORAGER FIELD HARVESTER

ALLIS—CHALMERS

WITH 6' WINDROW PICK-UP ATTACHMENT FOR HAYLAGE CHOICE OF TWO ROW-CROP ATTACHMENTS FOR SILAGE — 2-ROW FOR 28" - 42" ROWS AND 1-ROW

CHOPS FAST and FINE — AT LOW COST PER TON

The Model 720 FORAGER makes high-quality haylage and silage, chopped the way you want, at a cost that'll help your profits on your livestock.

- 6' pick-up attachment
- Row-crop attachments
- Cylinder center pivot
- Feed-roll springs
- Reversing mechanism
- Eight cupped tungsten carbide knives on cylinder
- Shear pins protect cylinder
- Built-in sharpener
- Shear bar is reversible and replaceable
- Delivery chute rotates
- Deflector spout adjusts
- Multiple-position hitch adjusts easily
- Heavy 6" tubular steel frame is built to withstand the jolts
- Optional axle extensions
- High flotation tires are available

## GRUMELLI FARM SERVICE



PHONE 786-3630

"See Us and We'll Fill Your Needs"

Opp. Solanco High School  
MECHANIC GROVE  
Allis Chalmers and Grove

Farm Equipment

Fickes Silos  
Badger Feeding Equipment

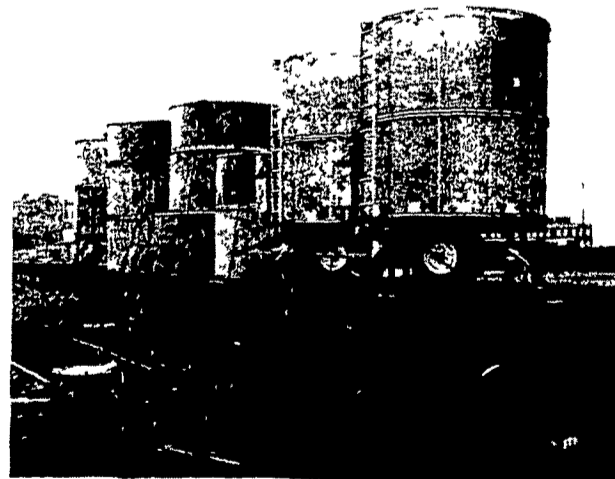
30 intersects the Somerset-Bedford county line. The townships affected are Allegheny, Stony Creek, Shade and Juniata.

The traps, about three inches long and an inch in diameter and baited with a pheromone, or sex lure, have been used successfully in the past to detect the presence of the moth pests. The program hopes to prove that with the aid of a new, more powerful sex attractant — Disparlure — male Gypsy Moths can be trapped in sufficient numbers to stop their mating.

The traps will be dropped at varying rates from 3,000 to 12,000 per square mile. Both the sex attractant and tacky substance used to ensnare the moths have been thoroughly tested and proven to be harmless to humans, birds and wildlife.

Gypsy Moths have been migrating from the New England area in recent years and are responsible for defoliating hundreds of thousands of acres of Pennsylvania forest lands, particularly in the northeast quadrant of the state.

ORDER NOW  
and SAVE  
BUY OR LEASE



Why Tie Up Your Working Capital

It Makes Sense to Lease

(Watch for our New Location)

## FARMILL CONSTRUCTION

Gordonville, Pa.

Phone 717-768-8796