

Hog Prices

New Holland Auction

Monday, June 12
Hog Receipts 750- Retail 28-28.50; Wholesale 2s, 3s, 4s 27.50-28; Heavyweights 27-27.50, Sows 21-23.50; Boars 20.25-22.50.

Lancaster Auction

Wednesday, June 14
HOGS—Barrows and Gilts strong to 25 higher.
BARROWS AND GILTS—US 1 210-235 lbs. 29.00; US 1-2 200-245 lbs. 28.10-28.25; US 2-3 195-260 lbs. 27.60-28.00.

Lancaster Market

Monday, June 12
HOGS—Barrows and Gilts steady to 50 higher, Sows steady to 25 higher.
BARROWS AND GILTS—US 1 210-235 lbs. 28.50-29.00; US 1-2 200-240 lbs. 27.75-28.00; US 2-3 190-250 lbs. 27.25-27.75; US 3-4 240-265 lbs. 27.00-27.25; US 3-4 265-285 lbs. 26.00-26.50.

Vintage Auction

Tuesday, June 13
Hogs: Barrows and Gilts 50-75 higher.
Barrows and Gilts: US 1 210-235 lbs. 28.50-28.75; US 1-2 200-240 lbs. 28.10-28.50; US 2-3 190-255 lbs. 27.35-28.00; few head US 2-3 255-270 lbs. 26.75-27.25.

St. Louis Auction

St. Louis Hogs: 4500. 1 fully 25 higher. US 1-3 200-230 lbs 27.75-

28.25, 50 head sorted US 1 205-210 lbs 28.50; 2-3 230-260 lbs. 26.75-27.75.

Indianapolis Auction

Indianapolis Hogs: 3500. Steady, instances 25 higher, moderately active. US 1-2 200-240 lbs. 27.75-28.00; 1-3 200-240 lbs. 27.25-28.00; 2-3 235-270 lbs. 26.50-27.25.

Peoria Auction

HOGS—3500, including 5 fresh loads committed for futures delivery, uneven and only fairly active trading, under 230 lbs. weak to 25 lower; heavier wts. steady US 1-2 200-230 lbs. 27.25-28.00, mostly 27.50-28.00, US 1-3 200-250 lbs. 26.75-27.50.

Lebanon Valley Auction

Wednesday, June 14
410 Head Hogs
Barrows and gilts 25c to 50c higher.
Barrows and Gilts: U.S. 2-3 200-240 pounds 27.75-28.25, lot at 28.50; 2-4 200-260 27.25-27.60; few lots 2-4 140-185 26.75-27.25.
Sows: US 2-3 350-600 pounds 21.85-22.60.
Boars: 21.00-22.00.
38 Head Feeder Pigs
U.S. 1-3 40-45 pounds (few lots) 23.00-24.00 per head; 1-3 85 pounds (lot) 27.25 per head.

Lebanon Valley Auction

Wednesday, June 14
353 Head Cattle

Compared with last weeks market, slaughter steers steady to 75c higher Slaughter cows unevenly steady Slaughter bulls steady to 75c higher

STEERS—High Choice (couple) 37.85 and 38.10; Choice 1,000 - 1,200; 36.60 - 37.75; Good 34.75 - 36.60; Standard 32.50-34.35, Utility (few) 30.10 - 32.10.

HEIFERS—Choice (couple) 34.00 and 35.10; Good (few) 33.35 - 33.85; Standard (few) 31.60 - 33.10.

COWS—Utility and High Dressing Cutter 29.00 - 31.50, couple to 32.50, Cutters 26.85 - 28.85; Cannors 24.75 - 26.75, Shells (few) down to 22.75.

BULLS—Good 35.00 - 37.75, couple to 39.00; Utility and Commercial 33.10 - 37.00, Cutters (few) 32.00-32.35.

203 Head Veal Calves
Vealers unevenly steady.
Prime 58.00 - 60.00, Choice 55.00 - 57.00; Good 53.00 - 54.00, Standard (few) 50.00 - 53.00; Utility 90 - 120 pounds (few) 45.00 - 47.00.

FARM CALVES—Bulls 80 - 130 pounds 47.00 - 66.00; Heifers 85 - 150 pounds 60.00 - 73.00.

18 Head Sheep and Lambs
Good 60 - 90 pound spring slaughter lambs 32.50 - 33.00

Oklahoma City

Thursday, June 15

Estimated Receipts 12,500
Same Day Last Week 13,178
Same Day Last Year 8,637
Trading active, feeder steers steady, heifers weak to mostly 50c lower, bulk supply Good and Choice 500-800 pound steers and 500-700 pound heifers.

Sales as of 1:00 P.M.
Feeder Steers: Choice and Prime 300-400 pound 49.00-52.75, shipment of 323 pound 56.00; 400-500 44.50-50.00; shipment of 425 pound weights 53.75; 500-600

Futures Trading

(Closing bids as of Thursday, June 15)

	Chicago Cattle	Chicago Hogs	New York Maine Potatoes	Chicago Fresh Eggs
June	38 20	28 55		28 20
July		29 10		29 70
August	36 60	28 35		33 85
September				38 85
October	35 05	26 70		38 40
November			2 95	42 00
December	35 02	27.55		42 25
February	35 52	26 45		
March			3 28	
April	35 45	24 72	3 48	
May			4 06	

Trend - Cattle are lower, Hogs are steady, Potatoes are steady and Fresh Eggs mixed

a-asked b-bid n-normal
Markets provided by Commodity Dept., Reynolds Securities, Inc

Omaha Cattle

Thursday, June 15

Compared with previous week's close, slaughter steers and heifers 25-50c higher with Choice and Prime at the full advance. Cows 100-125 lower

41 00-45.00; 600-700 39 00-42 00, 700-800 37.50-39 90; Mixed Good and Choice 450-700 38 00-42 50, 700-900 36 50-38.00, Mixed Standard and Good 700-850 Holsteins 32.10-34.70.

Feeder Heifers: High Choice and Prime 300-400 pound heifers 41 00-44 00, two shipments 318 pound and 402 pound 46.75; 400 500 38.00-42.50; 500-600 35 50-40.00; 600-700 35 00-37 60; Mixed Good and Choice 500-700 34.00-36.00

Bulls strong to 50c higher Small feeder supply fully steady

Four day receipts 22,400 as compared 22,300 the previous week and 21,100 a year ago Steers approximately 50 per cent including a considerable number High-Choice and Prime Heifers 33 per cent, supply predominantly High-Good and Choice Cows 7 per cent and feeders 7 per cent Marketings fully equal to the previous week and quite well distributed over the trading period Stimulated by steady carcass beef prices, slaughter steers and heifer prices moved higher early in the week The trade slowed after early rounds Wednesday and part of the earlier advance was lost

Steers Three loads High-Choice and Prime 1086-1266 pounds 3-4 39 40-39 50 A fairly liberal volume 1070-1269 pounds 3-4 High-Choice and Prime 38.75-39 25 Choice 975-1300 2-4 closed 37 25-38 50 Mixed Good and Choice 950-1250 36 50-37 50. Good 32 50-36 75 Standard and Low-Good 31.50-32.50.

Average cost slaughter steers first three days 37 53 average weight 1124 pounds as compared 36 93 and 1127 pounds previous week and 31 76 and 1122 pounds a year ago.

Heifers A load High-Choice and Prime 1042 pounds 3-4 38 15, a fairly liberal volume same grade 858-1073 pounds 3-4 37.65-38 00 Choice 825-1050 2-4 36 25-37 50. Mixed Good and Choice 775-1000 35 75-36.50 Good 32 00-35 50. Standard and Low-Good 30 00-32 00

Cows Utility and Commercial 24 00-26 00, a few Utility Dairybreds 26.25-26 50 Canner and Cutter 22.00-24 00, Mixed Cutter and Utility 24.25-25 00 Shelly Canner 19.50-21 50

Bulls Utility, Commercial and Good 28 00-32 50. Commercial 1-2 33 00-33 50, instances 34 00 Cutter and Low-Utility 25 00-28.00.

U. S. Inspected Livestock Slaughter

Estimated Daily Livestock Slaughter Under Federal Inspection

	CATTLE	HOGS	SHEEP
Week to date	499,000	1,167,000	148,000
Same period last week	500,000	1,203,000	136,000
Same period last year	475,000	1,290,000	151,000

DIFOLATAN® 4 FLOWABLE
The leading flowable fungicide made to fight potato blight.



DIFOLATAN gives excellent protection against both early and late blight. And is particularly effective against tuber rot.

DIFOLATAN sticks to the plant, resists weathering from rain or sprinkle irrigation. That means you can maintain your schedule without worrying about the effects of weather or irrigation.

Protection against tuber rot is outstanding. When you put potatoes in storage, you'll never know how well you did in the blight fight until you've shipped the last of them. Fields may look reasonably healthy before harvest, but if you put infected tubers into storage, you can find yourself with a costly, heavy cull out of late blight tuber rot infection.

DIFOLATAN works to give you greater yields of healthy potatoes. And—because it's flowable—it does that even better.

Another good thing about the fastest selling potato fungicide. It works on cucumbers, melons, and tomatoes, too.



Chevron Chemical Company, Ortho Division, San Francisco, California 94120, Helping the World Grow Better.

P. L. ROHRER & BRO., INC.

Smoketown, Pa.

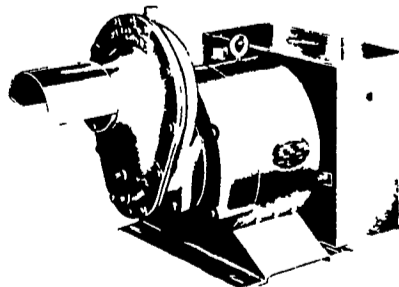
Ph. 397-3539



WORLD'S LARGEST MFG. OF TRACTOR DRIVEN ALTERNATORS

TRACTOR DRIVEN ALTERNATORS

PTO Units Available From 7 KW to 60 KW 20 Year Warranty



POWER WHEN YOU NEED IT MOST

1800 RPM

INSURE YOUR FARM OPERATIONS AGAINST POWER OUTAGES HAVE EXPERIENCED PEOPLE INSTALL & SERVICE.

INSIST on a FREE WINPOWER DEMONSTRATION at YOUR Farm Before You Buy ANY Tractor Driven Alternator

L. J. EDWARDS
FARM SALES, Manager



ELECTROMECH
ELECTROMECHANICAL SERVICE
ROUTE 222, EPHRATA, PA. 17522
PHONE (717) 733-7911

LP-NATURAL GAS GASOLINE DIESEL ENGINE GEN SETS TO 200,000 WATTS

ELECTRIC MOTOR • GENERATOR • POWER TOOL SPECIALISTS

LEBANON VALLEY LIVESTOCK MARKET, INC.

1 mile east of Fredericksburg along Route 222

PHONE JONESTOWN 865-2881

Sale every Tuesday at 1:30 P.M. starting with feeder cattle and pigs.