

TRY A CLASSIFIED—

NEW JAMESWAY Rugged Chain Barn Cleaner



Frees You for Better Things



- * Heavy Forged Link Chain
- * Galvanized Steel Elevator
- * Powerful Transmission

Stop In Today for Free Catalog.

YOU CAN COUNT ON US

M. E. SNAVELY

445 South Cedar St., Lititz, Pa. 17543 Ph. 626-8144

Set-Aside Acreage

Some principal requirements in set-aside acreage provisions of the 1972 farm programs have been outlined by Fred G. Seldomridge, chairman of the Lancaster County Agricultural Stabilization and Conservation Committee (ASC), in response to continuing questions from farmers.

The 638 farmers in Lancaster County signed up in the feed grain and wheat programs have a vital interest in knowing and complying with set-aside rule in order to earn full farm program payments, according to Seldomridge.

Purpose of set-aside in the feed grain and wheat programs under the three-year Agricultural Act of 1970 is to help reduce the potential American agriculture has for excess crop production. Farmers in the set-aside programs give up the use of some of their productive acres in order to help achieve an effective balance between supply and demand. For that reason, farmers are asked to select land for set-aside that has the same average productivity as the program cropland on the farm. Farm payments may be reduced or lost if the average productivity provision is not followed.

Set-aside land must be designated and certified by June 15. That means producers must come into the ASCS county office by that date to give the location of their set-aside land and certify they are in compliance with all set-aside provisions.

Producers are cautioned that no changes are allowed after they have certified compliance. "A farmer certifies that he has set aside the acreage and has complied and will continue to

comply with set-aside rules," Seldomridge said. After set-aside is designated and certified by a producer, his farm may be spot-checked at any time for compliance. If the farm is not in compliance, the producer may lose some or all of his program payment.

At a nominal cost, the ASCS county office offers set-aside inspection and measurement service which can provide farmers ahead of time with a guarantee of both acceptable quality and quantity of set-aside acreage. The deadline date for designating set-aside was June 8.

\$37 Million in Farm Loan Funds Released

The Administration has released \$37 million in farm operating loan funds, making available the full \$350 million appropriated for fiscal year 1972, Secretary of Agriculture Earl L. Butz announced.

"The \$350 million funding puts the farm operating loan program at an all-time level," Secretary Butz said. "The farm ownership loan program, with \$350 million also available, and the emergency loan program, at \$140 million, also are funded at record levels."

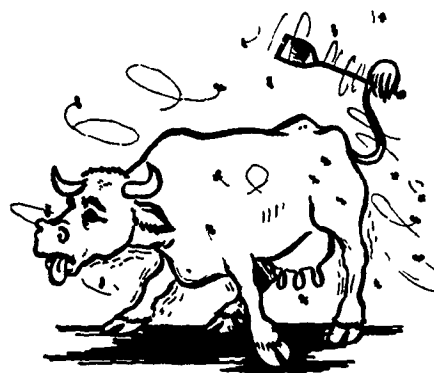
The Secretary said the new loan funds, which will be available through 1,750 county offices of USDA's Farmers Home Administration, may be used to buy seed, feed, fertilizer, livestock, tractor fuel and other equipment and facilities needed to run a successful farming operation. FHA supplies this credit to family farmers who are unable to obtain conventional credit from regular sources at reasonable rates.



PUBLIC ENEMY NO. 1

Your Local Red Rose Dealer can help you rid your premises of this creature. We have a fly control program to fit every farmers need.

- Golden Malrin Sugar Bait
- Fatal Fly containing Diptorex
- Kleen-Kow
Containing Vapona
Direct Spray
- Cygon 2-E Residual Spray
- Simax-Back Rubber Concentrate



We also stock a complete selection of herd health needs.

FOR PROMPT COURTEOUS SERVICE STOP AT YOUR LOCAL RED ROSE DEALER TODAY.

Red Rose
ANIMAL FEEDS


YOUR LOCAL INDEPENDENT RED ROSE DEALER

IN QUARRYVILLE AREA

RED ROSE
FARM SERVICE, INC.

 MAIN OFFICE
N. CHURCH ST.
QUARRYVILLE, PA.
786-7361

 BUCK, PA.
284-4464

IN ATGLEN AREA

BROWN & REA, INC.

 ATGLEN, PA.
215-593-5149


Paul Rohrer and Sons
Lancaster, Pa.

"We have processed feed every day of the year at the push of a button. The boys sure don't miss grinding..."

We get quality feed all the time. We can feed as much or as little as we want and not have to worry about keeping ahead of spoilage. Bottom unloading gives us more even production in both beef and dairy. It takes less than 45 minutes a day to feed 450 animals. Automation makes farming a lot more interesting to my sons."

PENN-JERSEY
HARVESTORE
SYSTEMS, INC.

 New Holland, Pa.
Phone: (717) 354-5171
1971 HARVESTORE
DEALER OF THE YEAR