

Farm Certifications Rise

Each day more farmers are certifying compliance with provisions of the 1972 farm set-aside programs for feed grain and wheat according to Fred G. Seldomridge Chairman of the

Lancaster County Agricultural Stabilization and Conservation (ASC) Committee.

Through June 7 some 215 farmers had certified, thus virtually assuring themselves of

receiving early farm program payments. Program payments will begin nationwide on July 1, and approximately 600 county farmers are expected to receive set-aside payment checks during the first week of July. Some 638 farmers are participating in the feed grain and wheat programs in the county.

Certification is the method the farm program agency of the U.S. Department of Agriculture uses

to provide early payments while at the same time obtaining assurance of farmer compliance with program provisions.

The farmer first certifies that his farm is in compliance, then payment is made to him. Through random selection some farms in each county are visited and checked each year by ASCS officials.

If a farm is found not in compliance, the farmer may forfeit some or all of his program benefits. If a significant number

of farms in a county should be found not in compliance, it could result in a county-wide compliance check.

The certification and random checking procedure is used in all States, and is said to be an effective tool for efficient farm program administration. The early farm payments beginning July 1 are preliminary. Final payment rates are based on the difference between average prices received during the first five months of the marketing year and a total guaranteed return specified in the law.

"In the case of wheat we know that the early payment is approximately 75 per cent of the total payment, with the other 25 per cent to be made after December 1. For feed grains the preliminary payment may also turn out to be the final payment, as happened last year. But we can't be sure until several months' market prices are averaged out," Seldomridge said.

Palm Sunday's Palms

The palm used by churches on Palm Sunday is usually from the cabbage palm, also called palmetto, and from low, shrubby palmettos in Florida. Ashes from the burned palms of the previous year's Palm Sunday are used in Ash Wednesday ceremonies.

My Neighbors



"The only job interview I've had is with my mother—she wants me home to clean up my room."

ARE HIGH SUPPLEMENT PRICES GETTING YOU DOWN



Switch to Mol-Mix liquid supplements. . . the money-saving way to insure maximum feed efficiency. Puts low-cost gains on your beef cattle and sheep, gets top production from your dairy herd.

Mol-Mix is a cane molasses-based supplement . . . a powerhouse of energy, protein, vitamins, and trace minerals. . . all in liquid form for quicker digestion and use. Mol-Mix is easier to handle, too. . . saves you trouble, time, and labor costs.

NOW FORTIFIED

with a new combination of power-packed ingredients.

Distillers Solubles Phosphoric Acid
Condensed Fermented Corn Extractives
Ammonium Polyphosphate

Join the crowd. Join the trend. Join the growing number of satisfied Mol-Mix customers. For more information see us today.

JOHN Z. MARTIN

New Holland R#1

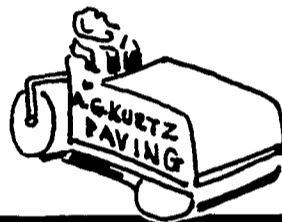
Phone 717-354-5848

Mol-Mix the liquid leader
liquid supplements

ASPHALT PAVING SPECIALISTS

- ROADS • STREETS
- PARKING LOTS
- RECREATION AREAS
- FARM LANES
- DRIVEWAYS

SAVE WITH OUR ECONOMICAL STONE AND OIL PROCESS



FREE ESTIMATES
BOOK YOUR PROJECT NOW!

A. G. KURTZ PAVING INC.

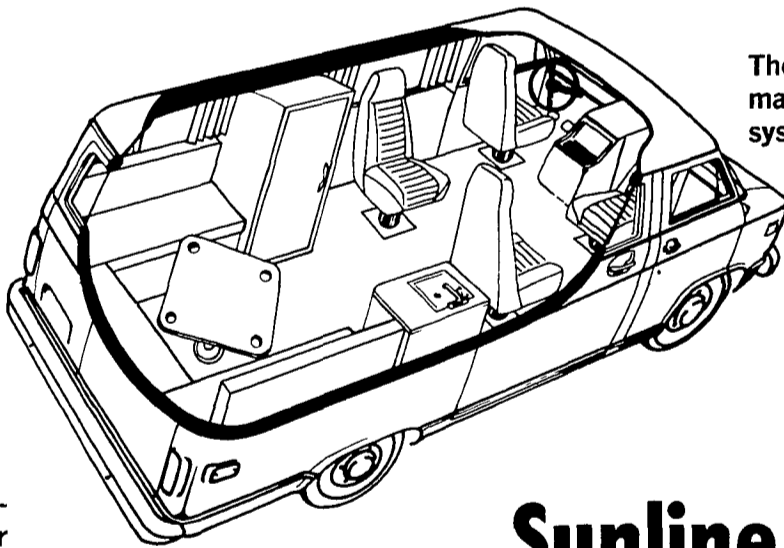
PHONE: DENVER 267-7591

DENVER, R.D. 1

MAKE THE MOVE TO THE **OUTDOORS**

This Summer In A **1972 Chevy CITY VAN**

Luxury, Comfort and Safety - both while moving and after you've stopped!

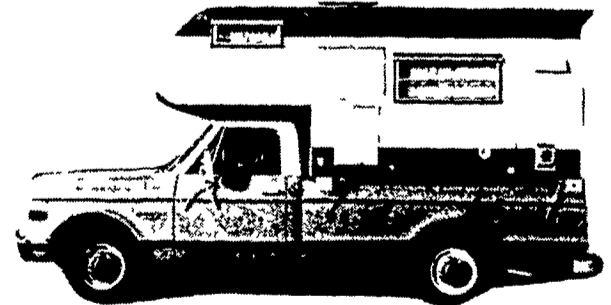


The CITY VAN is a new concept - Equally at home on the main street of Town, on the highways of our interstate system or off the beaten path.

— PLUS —

A complete Line of

Sunline Campers and PICKUP CAPS

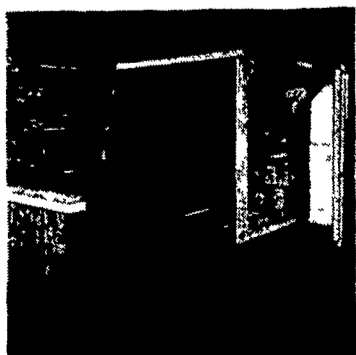


RUNABOUT CAMPER



We Also Have

Adventure WHEELS—



- SPORTY
- LUXURIOUS
- CONVENIENT
- PRACTICAL

You decide - is it a camper or a second car?

All These and Many More At:

VENTURES



Chevrolet, Inc.

AT KISSEL HILL

626-2091