

Holstein 4-H Club Holds Square Dance

The Lancaster County Holstein 4-H Club met recently at the farm of B. Frank Eshelman. Because of the absence of the president and vice-president, the third meeting was called to order by Debra Gregory, secretary.

Following the business meeting and leaders comments, the entertainment of square dancing followed. Refreshments were served.

News Reporter
Kerry Boyd

AERIAL LADDER EQUIPT. FARM PAINTERS

BRUNING QUALITY PAINT
WE SPRAY IT ON AND BRUSH IT IN.

Call Now For Free Estimates

HENRY K. FISHER

2322 Old Phila Pike

Lancaster, Pa 17602

Phone 717-393-6530

James Howes Appointed Director of Promotion

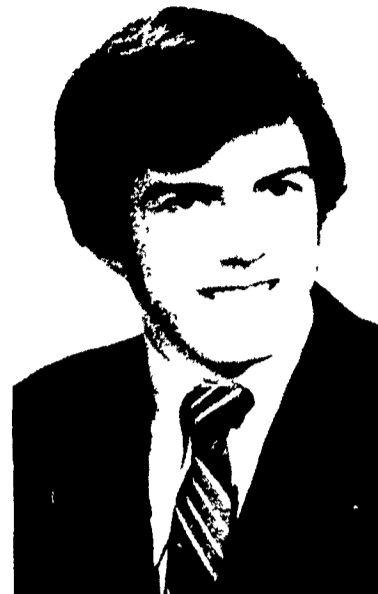
James E. "Jay" Howes began full-time duties June 5th as Director of Promotion for the Pennsylvania Holstein Association, according to State Association President Elvin Hess. Born and raised on a Registered Holstein farm, Howes brings a strong background in Holstein experience and activities to his new post.

The son of Mr. and Mrs. James L. Howes, Newtown, Jay has maintained an active interest in the breeding and management of the home herd. In addition, he has had 10 years experience with 4-H and Holstein junior project work, including activities on the local through national level. Highlights were high individual and member of the winning team at the 1965 Pennsylvania 4-H

Dairy Judging Contest and subsequent competition at the national contest in Waterloo, Iowa, and Pennsylvania's representative to the National 4-H Dairy Conference in 1968. These activities led to Howes being named National Distinguished Junior Member of the Holstein-Friesian Association of America in 1969.

Employed last summer as an interim HFAA Fieldman in Pennsylvania, Howes has since graduated from Cornell University with a B.S. in Agricultural Economics. While at Cornell, he was a member of the Ag College Council and the Senior Ag Honorary Society.

As Director of Promotion, Howes will be involved with individual assistance to breeders in

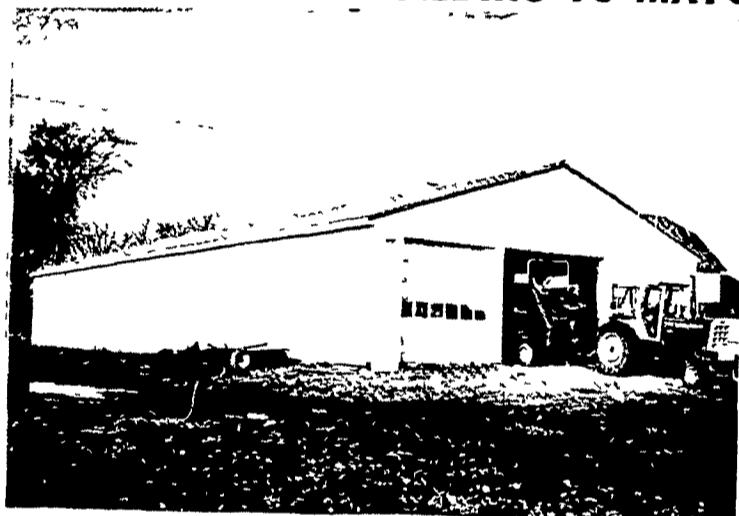


James E. Howes

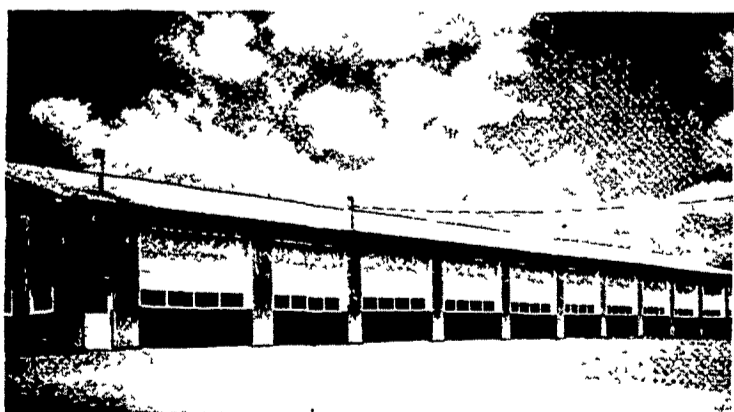
the promotion of Registered Holsteins and with the State Association program of service and breed promotion.

AGWAY

AGWAY PRE-ENGINEERED BUILDINGS FOR AGRI-BUSINESS AND COMMERCIAL USES AN AGWAY BUILDING TO MATCH YOUR INDIVIDUAL REQUIREMENTS



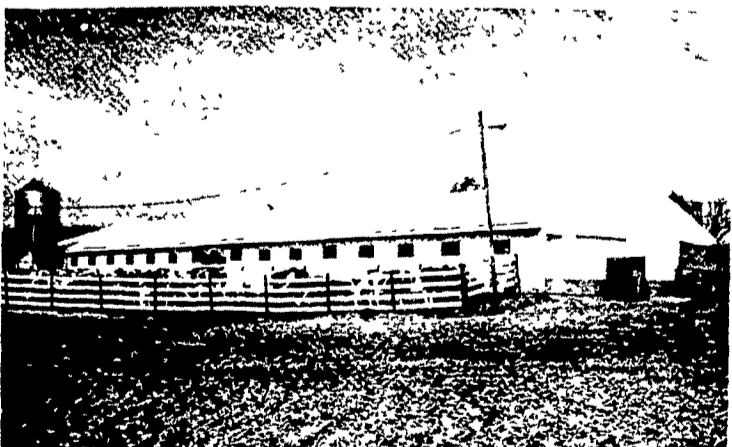
Farm equipment represents a growing investment. Keeping it in "ready-to-go" condition calls for the proper shelter to aid your maintenance program. Agway has the layout and size to match your equipment storage requirement . . . and the door design to give you the accessibility you want.



The tested construction techniques Agway has perfected for farm buildings are also an economical way to provide space for many commercial operations, such as garages, repair shops, warehouses, freight sheds.



Agway functions as the general contractor, taking the entire burden off your shoulders and allowing you to concentrate on what you know best — your own business. Under this system, you have only one person to deal with: Agway. Shown above is a construction supervisor, who makes sure your building is erected according to plans.



The first criteria of the Agway building is meeting your operational objectives, whether it is a livestock shelter or a utility building. The second benefit assured by Agway building service is the combination of quality materials and tested construction technique that will assure a trouble-free building for generations.



CALL TODAY AND ASK FOR AN APPOINTMENT

SUPPLY CENTER

1027 DILLERVILLE ROAD, LANCASTER

24 HOUR SERVICE DAILY

PH: 717-397-4761

Cows SNF Recorded

Two cows in the herd of Roy H and Ruth H. Book, Ronks, have been listed in an official production testing report released by the Holstein-Friesian Association of America. Included with the pounds of milk and butterfat are the amounts of solids-not-fat (SNF) produced by each Registered Holstein since last calving.

The animals and their actual production levels are:

Roaring Maples Ivanhoe Betty 5782892, seven-years-old, 23,760 pounds milk, 804 pounds butterfat and 1,956 pounds solids-not-fat in 342 days; Roaring Maples Pilot Bess 5639560, eight-years-old, 21,500 pounds milk, 753 pounds butterfat, 1,727 pounds solids-not-fat in 299 days.

The Holstein Association's testing program has provided for determining SNF nutrients since 1962. This is the part of milk that contains protein, lactose, minerals and other elements so important to the nutrition and taste of milk.

Total nutrient testing as sponsored by the Holstein Association is in step with today's consumer demands. It provides the Holstein breeder with information for improving the overall performance of his herd, and the homemaker can use it as a measure of milk's food value.

In the Kitchen

MUSHROOMS IN SOUR CREAM

- 1 lb. mushrooms (sliced into trees)
- 1 chopped onion
- 1 cup sour cream
- 2 tsps. flour
- 1 tbsp. dill
- 1 tbsp. parsley flakes
- Salt and pepper

Saute mushrooms and onions in a small amount of oil. Add dill and parsley flakes. Blend cream and flour together thoroughly. Add cream mixture to mushrooms. Simmer until very hot, 10 to 15 minutes. Serve over brown rice.

Wailing Wall
The Great Mosque of Omar stands where Solomon's Temple once stood in Jerusalem. All that is left of the temple is the Wailing Wall, where orthodox Jews gather to lament the passing of their early days of glory.