

Elm-Penryn Club Entertains Lincoln 4-H Club

The Elm-Penryn 4-H Club met Tuesday evening with the president leading the Club in the 4-H Pledge.

The Elm-Penryn Club invited the Lincoln Club to see slides and see demonstrations. The demonstrations were given by Sylvia Uibel, who talked on

geology, and Lisa Stetter and Gail Miller gave a demonstration on mounting butterflies. Pamela Nissley gave a report on indoor flowers and Denise Haines and Ruth Uibel gave a demonstration on minerals.

After the demonstrations Mr. Grube, one of the Club leaders,

showed slides of his trip to the western states. News Reporter Cathy Miller

4-H Calendar

Saturday, June 10

10: a.m.—Rough Riders Horse and Pony Club, Lancaster Riding Club.

Monday, June 12

8:30 a.m. — 4-H Dairy Cattle Judging practice session, Farm and Home Center.

12:30 p.m. — Lampeter-Strasburg Merry Maids 4-H Sewing and Cooking Club, Martin Mylin Junior High School.

1 p.m. — Penryn-Elm Sewing Club, home economics department, Manheim Junior High School.

7:30 p.m. — 4-H Guernsey Club meeting, Ralph Bitler farm, Wakefield.

8 p.m.—Lancaster 4-H County Council meeting, Farm and Center.

Wednesday, June 14

10 a.m. — 4-H Strawberry Roundup, Farm and Home Center.

8 p.m. — Red Rose 4-H Baby Beef and Lamb Club meeting, Quarryville Memorial Park. 4-H Exchange Trip, Dundee, Michigan, June 14 - 21.

Friday, June 16

7:30 p.m. — Saddle Cinches 4-H Club, home of Margaret Keeney, Manheim RD4.

Broken Bit 4-H Horse and Pony Club meeting, home of Cindy Enck, Stevens.

Saturday, June 17

10 a.m.—All-Breeds Field Day, Penn State University.

5 p.m. — Broken Bit 4-H Horse and Pony Club Open Horse Show, Lancaster Riding Club

New 4-H Club Formed, Sew Seams So Simple

A new 4-H sewing Club has been started in Elizabethtown under the name "Sew Seams So Simple." The first meeting was held at Mrs. Lester Garber's home, one of the group leaders along with Mrs. Robert Grosh and Mrs. Edward Doyle.

At the meeting the following officers were elected: Sally Murray, president; Maureen Doyle, vice-president; Sally Garber, secretary; Cheri Reesor,

assistant secretary; Carmella Keller, treasurer; Louise Moyer, assistant treasurer; Ann Kegerize, news reporter, and Lynda Hollen, assistant news reporter.

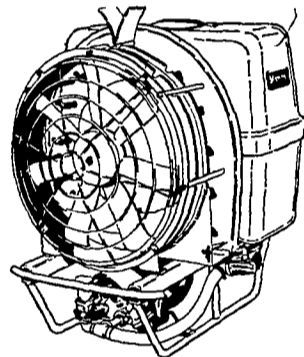
Joan Kegerize, Lisa Bender and Sabrina Rosenberry are the song and game leaders.

Assistant home economist Miss Joan Lucas spoke at the meeting.

News Reporter Ann Kegerize

Myers A32TM

ORCHARDS • ROW CROPS
TURF • VINEYARDS



...with
Lightweight,
Rust Free
Molded Tank

- Compact, 3 point Hitch PTO Air Sprayer
- Multi-purpose chemical applicator for Parks, Golf Courses, General Farming, Orchards and Vineyards
- Multi-use Design Cuts Cost in Half
- Big Piston Pump offers Full Range from 20 to 500 P.S.I. and 12 GPM

LESTER A. SINGER

RONKS, PA. PHONE 687-6712
Lancaster County's Only Dealer Specializing in Sprayer Sales & Service

TIRED!!

Are you just a little tired of milk replacers that won't mix well, that won't stay in suspension, that settle out?



Read what Paul Miller, respected Holstein breeder of Linglestown RD4, Pa. has to say...

"I like Pioneer Vig-R-Calf because it starts my calves off fast and keeps scours at a minimum."

And Mrs. Earl Hadley, Bedford, Penna. . .

"Having used other milk replacers, found Vig-R-Calf to be more like cow's milk, in both building better calves, and eliminating other troubles."

And Donald Walker of Berlin, Pa. . .

"I have fed another make of calf starter and milk replacer for a good many years, but I found that Pioneer Vig-R-Calf and calf starter, much more appealing, and the calves do much better on it."

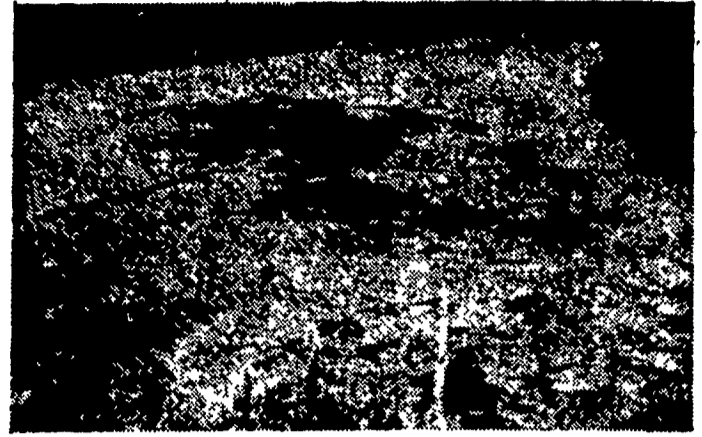
You can get performance like this, with a product that many users don't mix at all. Just put the powder in the bucket and pour the water on top. Try it for yourself and see the difference.



ELMER M. SHREINER

Trading as Good's Feed Mill
Specializing in DAIRY & HOG FEEDS
New Providence, Pa.
Phone 786-2500

READ LANCASTER FARMING FOR FULL MARKET REPORTS



ALGAE: The Spoiler

Your lake, pond or stream no longer must bear the odor and scummy plague of algae — or the harmful, even lethal, effect it can have on fish, wildlife, animals and humans.

CUTRINE, when used as directed, eliminates ALL forms of algae at SAFE limits to other living things.

No other algacide can make that claim. **CUTRINE** has been thoroughly tested and proven in commercial use. It is registered with the U.S.D.A. (No. 8959-1).

Water treated with **CUTRINE** is safe immediately for swimming, fishing, watering, irrigation



APPLIED BIOCHEMISTS, INC.
1748 North Farwell Avenue
Milwaukee, Wisconsin 53202

P. L. ROHRER & BRO., INC.

SMOKETOWN, PA.

Phone Lanc. 397-3539

NEW

720 FORAGER FIELD HARVESTER

ALLIS-CHALMERS



With 6' Windrow Pick-up Attachment for Haylage

... Choice of Two Row crop Attachments for Silage—2 row for 28" - 42" rows and 1 row.

Chops Fast and Fine—at Low Cost Per Ton

The Model 720 FORAGER makes high quality haylage and silage chopped the way you want, at a cost that'll help your profits on your livestock. From multiple position hitch to adjustable deflector spout the 720 is designed for efficient economical forage harvesting and fast changes from one crop to another.

6' pick up attachment handles heavy windrows with ease. Does a clean job in picking up green forage, wilted hay cured hay or straw. Pick up fingers comb the stubble and feed material to the auger in a steady stream. Save more of the leaves.

Row-crop attachments match your row width. Guide stalks into chopper with three gathering chains per row. Two row attachment adjusts for row spacings from 28" to 42". One row attachment harvests rows of any width.

Cylinder center pivot maintains constant relationship between gathering unit and feed rolls for even feeding.

Feed roll springs are adjustable to give you the proper tension for any crop.

Reversing mechanism lets you reverse rotation of feed rolls and gathering unit from tractor seat for fast clean out.

Eight cupped tungsten carbide knives on cylinder cut and throw crop in a single fast smooth operation. There's no need for a power consuming blower. Scissors action of curved knives against shear bar produces a fine cut.

Shear pins protect cylinder drive and drive line for long life.

Built in sharpener lets you put fresh keen edge on knives without removing them from the cylinder.

Shear bar is reversible and replaceable, with hardened edges for clean cutting.

Delivery chute rotates for side or rear delivery into truck or wagon. Can be positioned easily from tractor seat.

Deflector spout adjusts from tractor seat for full wagon loading.

Multiple position hitch adjusts easily to match tractor drawbar height.

Heavy 6' tubular steel frame is built to withstand the jolts and jars of operation over rough fields.

Optional axle extensions change harvester tread to match row widths.

High flotation tires are available if field conditions require them.

N. G. Myers & Son
Rheems, Pa.

Nissley Farm Service
Washington Boro, Pa.

Roy H. Buch, Inc.
Ephrata, R. D. 2

Grumelli Farm Service
Quarryville, Pa.

L. H. Brubaker
Lancaster, Pa.