

# Twin Valley Chapter Plans Summer Picnic

The Twin Valley FFA Chapter met recently in the vocational agriculture classroom of the Twin Valley High School. The meeting was conducted by the newly installed Chapter officers, headed by president Nevin Mast.

Gary Haller, chairman of the landscaping committee, reported that the Chapter has completed

planting of six large azaleas, eight small azaleas, two junipers, 50 scotch pine seedlings, and four rose bushes around the high school building. A 10-foot red oak and six wardi yews were also planted on the school grounds

The following nurseries donated shrubs to the FFA

Chapter for use at the high school: Spring Garden Farm Nurseries, Brown's Nursery, Beaver Nursery, Buddies Nursery, and Cedar Hill Flowers.

The Chapter also planted crown vetch on the hillside in front of the high school to help prevent erosion. The crown vetch was obtained through the cooperation of the Berks County Soil Conservation Service, and was dug along Route 176 by Chapter members.

Terry Murray gave a report on the chicken barbeque that the Chapter will hold July 15. It was decided that the menu will include chicken, baked potatoes, macaroni salad, potato salad, home-made bread, ice cream, pie, cake, birch beer, and orange drink. It was decided that the barbeque should be held at Kurtz' Fishing Lakes as this is more centrally located than any other place suggested. The barbeque will be for all Chapter members, parents and guests.

It was suggested that the Chapter have a donkey baseball game this summer as a fund raising activity. This motion was referred to a committee of three consisting of Fred Stevenson, Melvin Houck, and William Ford.

The Chapter voted to pay \$7 towards each Chapter member going to FFA Activities Week at Penn State. It was also decided that the Chapter should pay the entire cost for former president

Frank Stoltzfus, who will be a candidate for a state office.

President Nevin Mast reported that the program of work for next year is nearing completion. Nevin reported that the committee working on this is reviewing applications for several state and national awards to gain ideas for improving the Chapter activities.

Dates for summer activities were discussed. Definite dates will be given at the next meeting. The meeting was then adjourned, after which members enjoyed a recreational period in the gym and refreshments in the vo-ag shop.

Chapter Reporter  
Thomas Carskadon

## TRY A CLASSIFIED—

★ FARM  
★ ANIMAL  
★ EQUIPMENT



**AUCTION SALE**

**FREE!**

Your sale can be listed in our Sales Register without charge. Just mail details to Lancaster Farming, P. O. Box 266, Lititz, Pa. 17543

## PROTECT YOUR BARN AGAINST DETERIORATION!

LET US PAINT IT INEXPENSIVELY THIS NEW SCIENTIFIC WAY . . .

You can save big money by contracting with us to paint your barn. New Hydra-elevation equipment eliminates expensive scaffolding. Fast, new air-friction painting penetrates pores in addition to brush coverage. Send postcard for details and free estimate. No obligation.

**SEALCRETE, INC.**

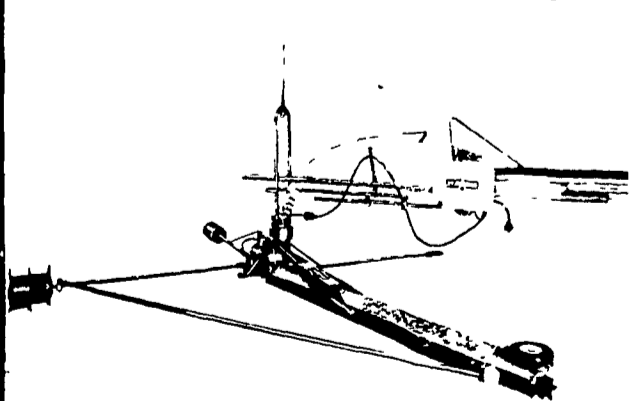
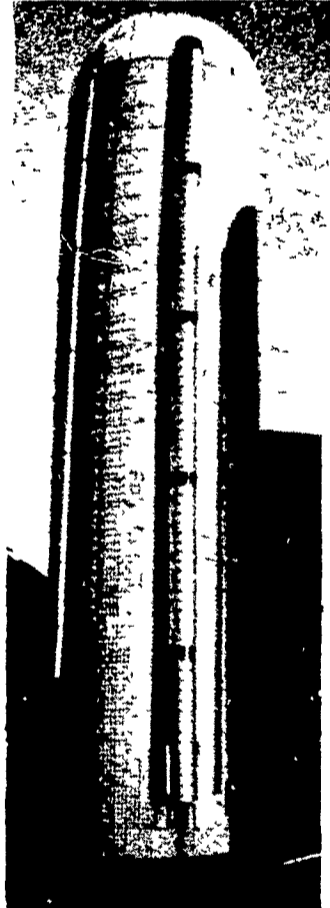
R.D.2 EPHRATA, PA.  
Phone 717-859-1127



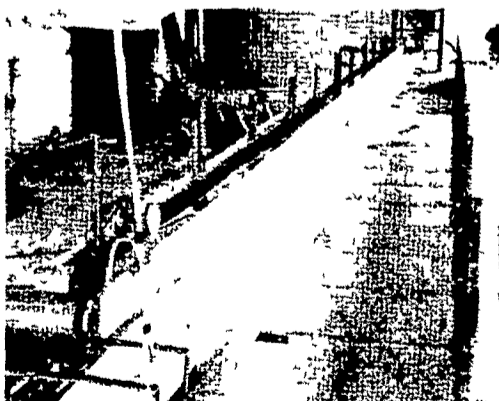
# BEFORE YOU BUY ANY SILO OR SILO EQUIPMENT....

✓ CHECK WITH THE LANCASTER SILO BOYS!

We Sell the Best For Less



STARLINE UNLOADER



AUTOMATIC BELT FEEDER

# LANCASTER SILO CO., INC.

2436 Creek Hill Road or  
2008 Horseshoe Road, Lancaster, Pa.

## Help Us Serve You

If your organization didn't make our farm calendar this week, it's not because we don't like you or your organization.

We may have missed it in the rush. Or maybe you forgot to tell us.

Either way, we'd like to extend our farm community service to you.

To get on the Farm Calendar, remind us by calling 394-3047 or 626-2191 or by writing to Lancaster Farming, 22 E. Main St., Lititz, Pa. 17543. And help us serve you better.

## PRE-INVENTORY CLEARANCE OF FARM TIRES

	Each
1-11 2x28, 4 ply Goodyear Sure Grip Discontinued Design	46.00 Fed Excise Tax 3 48
2-13 6x26, 6 ply Goodyear Tire Sure Grip Discont Design	64.00 Fed Excise Tax 5 18
2-14 9x28, 4 ply Goodyear Tire Sure Grip Change-overs	80.00 Fed Excise Tax 5 99
1-18 4x34, 6 ply Goodyear Tire Sure Grip Blemish	145.00 Fed Excise Tax 10 69
1-18 4x34, 6 ply Goodyear Power Torque Change-Over	148.00 Fed Excise Tax 10 69
1-11 2x28, 4 ply Armstrong Rear Tractor Discont Design	45.00 Fed Excise Tax 3 48
2-14 9x28, 6 ply Armstrong Rear Tractor Discont Design	75.00 Fed Excise Tax 6 46
1-12 4x38, 4 ply Armstrong Rear Tractor Discont Design	72.00 Fed Excise Tax 5 40
2-12 4x38, 6 ply Armstrong Rear Tractor Discont Design	78.00 Fed Excise Tax 5 68
2-13 6x38, 4 ply Armstrong Rear Tractor Discont Design	78.00 Fed Excise Tax 6 22
1-13 6x38, 6 ply Armstrong Rear Tractor Discont Design	81.00 Fed Excise Tax 6 50
1-15 5x38, 6 ply Armstrong Rear Tractor Discont Design	89.00 Fed Excise Tax 7 74
9-5 50x16, 4 ply Goodyear Super Rib Front Tractor Change-Overs	14.95 Fed Excise Tax 92
5-7 60x15, 6 ply Norwalk Farm Wagon Tires	14.00 Fed Excise Tax 1 08

On the farm installation available at moderate rates

## C. E. LUTZ, INC.

30 N. Market Street Elizabethtown, Pa.  
Phone 717-367-1438

