

Hog Prices

New Holland Auction

Monday, May 22
Hogs 641: Barrows & Gilts: Steady to 50c higher. US No. 1-2 190-240 lbs. 27.75-29.00; US No. 1-3 190-240 lbs. 27.25-27.75; US No. 2-4 240-260 lbs. 26.50-27.50; US No. 2-4 170-190 lbs. 24.00-26.00.
Sows: US No. 1-3 300-550 lbs. 22.00-23.50.
Boars: 20.00-22.00.

Lancaster Market

Monday, May 22
Barrows and Gilts strong to 50c higher.
Barrows and Gilts: US 1 195-235 lbs. 28.00-28.50; US 1-3 195-240 lbs. 27.25-27.60; US 2-3 235-255 lbs. 26.50-27.10; 270-280 lbs. 25.00-25.50.

Lebanon Valley Auction

Tuesday, May 23
180 Head Hogs
Barrows and Gilts \$1.50 higher.
Barrows and Gilts: US 1-2 200-230 pounds 28.50 and 29.00; 2-3 195-240 27.85-28.25; 2-4 195-270 26.85-27.85.
Sows: U.S. 2-3 350-600 pounds (few) 20.75-21.60.
Boars: 19.50-21.00.

Vintage Auction

Tuesday, May 23
Barrows and Gilts 75-1.00 higher.
Barrows and Gilts: US 1 210-235 lbs. 28.25-29.00; US 1-2 205-240 lbs. 27.75-28.25; US 2-3 195-245 lbs. 27.00-27.85.

Indianapolis Auction

Hogs: 2000. 50-75 lower, slow US 1-2 200-240 lbs. 27.00-27.50; 24 head 28.25; 1-3 200-250 lbs. 26.50-27.25.

Peoria Auction

Hogs: 3000. Fairly active, opening 25-50 lower. US 1-2 195-230 lbs. 27.25-27.75; 100 head 28.00; 1-3 200-240 lbs. 26.50-27.25.

St. Louis Auction

Hogs: 6000. 50 lower. US 1-3 210-240 lbs. 26.75-27.00; 1-2 200-230 lbs. 27.00-27.25; around 150 head 27.50.

Nottingham Auction

Monday, May 22
Feeder Pigs: 8.00 - 15.25.

Lancaster Auction

Wednesday, May 24
Barrows and Gilts mostly 50c higher.
Barrows and Gilts: US 1 190-220 lbs. 29.00; US 1-2 195-240 lbs. 28.00-28.35; US 1-3 195-250 lbs. 27.50-28.10.

Omaha Cattle

Thursday, May 25
Compared with last weeks close, slaughter steers and heifers strong to 25c higher, the most advance on High-Choice and Prime. Cows fully steady. Bulls firm. Feeder Cattle and calves strong to 50c higher with a continued good demand for fleshy two-way steers.

Four day receipts 18,200 as compared 19,200 previous week and 24,400 a year ago. Slaughter steers approximately 49 per cent, heifers 37 per cent, rather liberal percentage Choice steers with heifer supply predominantly High-Good to Average -Choice. Cows 8 per cent, feeders 5 per cent. On normal Monday receipts, prices on slaughter steers and heifers weakened slightly in reflection on a lower trend on carcass beef at the wholesale level.

The early bearishness was more than offset later, however, as marketings were curtailed and carcass prices again pointed upward. All buying interest were aggressive for numbers on the late rounds with best steer demand for choice and Prime 1000-1150 pound weights producing a 600-700 pound carcass. Virtually all plants will observe a non-slaughter holiday on May 29th for Memorial Day.

Steers: Five loads High-Choice and Prime 1084-1211 pounds 3-4 36.90-37.00, moderate volume same grade 978-1225 2-4 36.40-36.75. Choice 975-1275 2-4 closed 35.50-36.50. Mixed Good and Choice 950-1225 34.75-35.50. Good 32.00-35.00, mostly Good Holsteins 2-3 31.50 early. Standard and Low-Good 31.00-32.00.

Average cost slaughter steers first three days 35.56 average weight 1135 pounds as compared 35.45 and 1131 pounds previous

Futures Trading

(Closing bids as of Thursday, May 25)

	Chicago Cattle	Chicago Hogs	New York Maine Potatoes	Chicago Fresh Eggs
June	37.00	28.05		24.75
July		28.50		28.60
August	35.65	27.60		33.00
September				38.65
October	34.45	26.10		38.00
November			2.80	41.50
December	34.45	26.30		41.95
January '73				40.70
February '73	34.85	25.80		38.40
March '73			3.10	
April	34.65	24.35	3.28	
May '73			3.81	

Trend - Cattle are stronger, Hogs are stronger, Potatoes are steady and Eggs are weaker.

a-asked b-bid n-normal
Markets provided by Commodity Dept., Reynolds Securities, Inc..

week and 32.30 and 1131 pounds a year ago.

Heifers: Load High-Choice and Prime 976 pounds 3-4 36.65 and fifteen loads same grade 869-1045 3-4 36.40-36.50. Some Mixed Choice and Prime 36.25 early. Choice 825-1050 2-4 35.00-36.25. Mixed Good and Choice 775-1000 34.50-35.25. Good 30.50-34.50. Standard and Low-Good 29.00-30.50.

Cows: Utility and Commercial 24.50-26.50, Utility and Commercial 22.00-24.50, Mixed Cutter and Low-Utility 24.75-25.00, Shelly Canner 20.00-22.00.

Bulls: Utility, Commercial and Good 27.50-31.00, Commercial 1-2 31.50-32.00. Cutter and Low-Utility 24.00-27.50.

Feeders: Outshipments approximately 1000 head little changed from previous week,

prices strong to 50c higher. Supplies mainly two-way steers, few yearlings included.

Steers: Two loads Choice 611-620 pounds 40.00-42.00, few lots Choice fleshy 975-1025 35.75-36.00. High-Good and Choice 941-1102 34.75-35.50. Load Good 645 35.00.

Heifers: High-Good and Choice 775-837 pounds 34.00-34.50.

Local Grain

Thursday, May 25
These prices are made up of the average prices quoted by six participating local feed and grain concerns. It should be noted, however, that not every dealer handles each commodity. All prices are per bushel, except for ear corn which is per ton.

The average local grain prices quoted Thursday, May 25, 1972 are as follows:

	Bid+	Offered+
Ear Corn	38.00	45.33
Shelled Corn	1.39	1.56
Oats (local)	.74	.92
Oats (western)	.99	1.03
Barley	1.05	1.28
Wheat	1.42	1.61

+Bid is the price the dealer will buy from the farmer delivered to the mill Offered is the price the dealer will sell for at his mill.

New Holland Dairy Cattle

Wednesday, May 24
Reported receipts of 69 cows and 8 heifers; prices steady with last weeks market, attendance fair.

Two loads New York State cows and close-springers, 430 - 665.

Load Pennsylvania cows, 465 - 655.

Local cows, 365 - 530
Open Heifers, 215 - 270.
Bred Heifers, 290 - 400.

LEBANON VALLEY LIVESTOCK MARKET, INC.

1 mile east of
Fredericksburg
along Route 222
PHONE JONESTOWN
865-2881
Sale every Tuesday at
1:30 P.M. starting with
feeder cattle and pigs.

SALE DAYS

MAY 27 AND MAY 29
OPEN MEMORIAL DAY
8 A.M. till 2 P.M.

PREMIUM STUDS 2 x 4 x 8 ft.	88c each
ROOFING SHINGLES white 240 lbs.	\$9.72 per 100 sq. ft.
FIBERGLASS ROOFING Green or white	8 ft. \$2.39 10 ft. \$2.95 12 ft. \$3.55
ALUMINUM SIDING .024 thick White	\$22.50 per 100 sq. ft.
INSULATION BOARD 1/2" x 4' x 8'	\$1.66 each

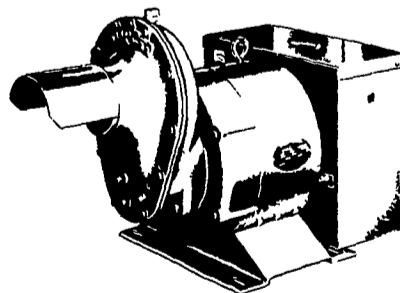
84 LUMBER

Hempland and Centerville Road Lancaster

WINPOWER



TRACTOR DRIVEN
ALTERNATORS



WORLDS LARGEST
MFG. OF
TRACTOR-DRIVEN
ALTERNATORS

PTO Units
Available From
7 KW to 60 KW
20 Year
Warranty

POWER
WHEN YOU NEED
IT MOST
1800 RPM

INSIST on a FREE
WINPOWER DEMONSTRATION
at YOUR Farm
Before You Buy ANY Tractor
Driven Alternator

L. J. EDWARDS
FARM SALES, Manager

INSURE YOUR
FARM OPERATIONS
AGAINST POWER
OUTAGES. HAVE
EXPERIENCED PEOPLE
INSTALL & SERVICE.

CALL NOW



ELECTROMECH

ELECTROMECHANICAL SERVICE

ROUTE 222, EPHRATA, PA. 17522

PHONE (717) 733-7911

LP-NATURAL GAS
GASOLINE
DIESEL
ENGINE GEN.
SETS TO
200,000 WATTS

ELECTRIC MOTOR • GENERATOR • POWER TOOL SPECIALISTS

U. S. Inspected Livestock Slaughter

Estimated Daily Livestock Under Federal Inspection

	CATTLE	HOGS	SHEEP
Week to date	479,000	1,216,000	142,000
Same period last week	486,000	1,186,000	132,000
Same period last year	488,000	1,302,000	146,000

CONTROL WEEDS IN ALFALFA WITH

BUTYRAC-118

Apply 2 to 4 weeks after alfalfa emerges. Controls broadleaf weeds in seedling or established legumes. This remarkable selective action — killing many broadleaf weeds without affecting certain broadleaf crops — has been proven by research men and commercial growers throughout the country.

We are distributors for a complete line of



WEED KILLERS

P. L. ROHRER & BRO., INC.

SMOKETOWN, PA.

Phone Lanc. 397-3539