

Farm Women Societies

Society 3

Farm Women Society 3 met last Saturday in the Salem Lutheran Social Room, Ephrata. Devotions were in charge of the hostess, Mrs. Luther Moore.

The meeting was a workshop on ceramics conducted by Mrs. Harvey Gehman and Mrs. Sam Eberly. Each member applied the crystal glaze to a plate which will be fired and returned to the maker at the meeting in June.

During the business meeting, conducted by Mrs. Clarence Stauffer, a report was given on the Spring Rally held recently at Seven Springs in Somerset County. Also \$50 was given to Scott Stober who will spend three months in the Netherlands as a representative of the U. S. in "The Understanding Youth" program.

Several members volunteered to assist the "Meals on Wheels" program when it is started in the Ephrata area.

The next meeting will be at the home of Mrs. Jay Miller, Hopeland. Arnold Lueck, associate Lancaster County agent, will be the speaker.

Society 8

Farm Women Society 8 entertained Society 22 members last Saturday at Musser Spring House, Mount Joy RD1. This structure has stood many years and has many interesting features. There were 29 members present from Society 8 and 11 members of Society 22 in attendance.

Due to the absences of the president, Mrs. Lloyd Derr, and the vice president, Miss Anna Mae Eby, the meeting was in charge of Mrs. Arlene Witman.

Several songs were sung, accompanied at the piano by Mrs. Charles Shank. Mrs. Margaret Heisey presented timely thoughts and admonitions for devotions.

Members responded to roll call by introducing a guest with whom they had matched parts of pictures of flowers.

Minutes of the April meeting were read by Mary Grace Martin and the treasurer's report was given by Mrs. Sylvester Shuman.

A card of thanks was read expressing appreciation of flowers from the Society from Mrs. Roy Greider. She is experiencing gradual improvement. Mrs. Harold Drager is in Room 411 in St. Joseph's Hospital and Mrs. Lizzie Keener is a patient in the same hospital. Hostesses were Mrs. Henry Musser, Mrs. Martin Musser, Mrs. Viola Greider, Mrs. Elias Musser and Mrs. Lester Wolgemuth.

Those who wish to take the Lancaster County bus tour on June 21 conducted by Mrs. John Herr, please contact Mrs. William Heisey, Mount Joy RD1, for information.

Guest speakers for the afternoon were Mr. and Mrs. Daniel M. Wolgemuth. They gave an illustrated report through slides of their trip to Liberia, Africa, to visit their son James. They wore clothing made from material dyed with natural dyes made in Liberia. The slides showed palm and fruit trees, native flowers and life in the palvar huts which have thatched roofs, brass articles made by the natives, chains of wood, and belts made of large seeds. Wild animals are not seen here. Visitors experience the heat of the midday and quite a bit of dust as they go about.

Society 17

Farm Women Society 17 met recently at the Dutch Dell near The Buck for their Mother and Daughter Banquet. There were 54 present.

Mildred Holtzauer presided at the meeting, assisted by Ella Ecklin on the place and decoration committee. The program and prizes were in charge of Ann Leed and Maude Harnish. Each member and guest received a begonia plant.

Kay Weaver sang several selections and Mrs. Orpha

Weaver gave two readings. Games followed.

The next meeting will be held at 1:30 p.m. June 1 at the home of Mrs. Martin Eshelman, near Liberty Square.

Society 19

Farm Women Society 19 members met at the home of Mrs. Richard Nolt, 645 Church St., Landisville, assisted by Mrs. Paul Hollinger. There were 25 members and three guests present. Mrs. Abram Root led devotions.

Mrs. Kenneth Warfel,

president, presided at the business meeting.

The Society voted to donate \$100 for the County project, LARC.

Wilma Nauman will write to the Columbia, South America, orphan, who is supported by the group.

Floral arrangements were capably done by Tina Eisenhauer from the Mount Joy Vocational Technical School.

The Society will go to Harrisburg State Hospital in June to present entertainment and refreshments.

Plans for the family picnic to be held in July at Arthur and Grace Landis' cottage in Perry County are being arranged.

Society 21

Farm Women Society 21 met at the home of Mrs. James Landis,

Quarryville. Mrs. Landis led devotions. Mrs. Howard Steinberg and Mrs. Willis Rineer were cohostesses.

Mothers of members were special guests. Each Mother was presented with garden plants.

During the business portion of the meeting led by Mrs. J. Richards Wood, president, the group voted to donate \$25 to LARC, the County Project.

Forms were handed out for the Farm Woman of the Year contest. The County winner will be announced at the County Convention November 4.

The group donated cookies to the USO. Mrs. James Long and Mrs. Charles Tindall reported on the Spring Rally held in Somerset County.

Mrs. Henry Bushong, Kirkwood, presented an art skit for the entertainment.

The next meeting will be in the home of Mrs. John DeLong, New Providence RD1, on June 8.

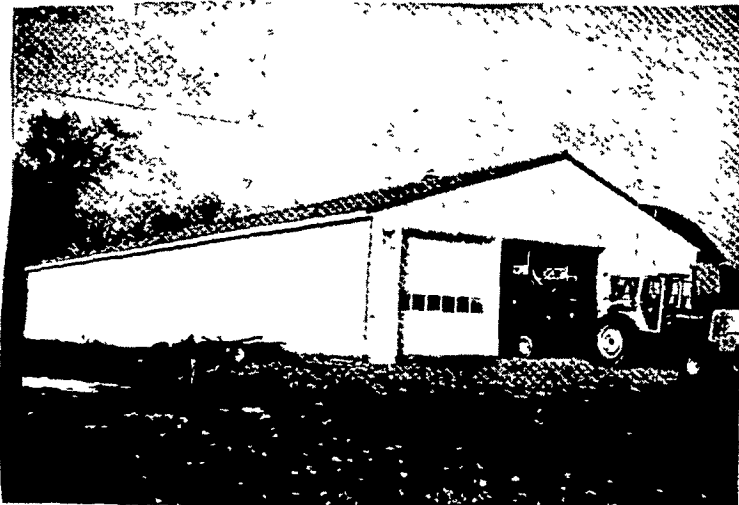
AGWAY

SPECIAL 5% OFF UNTIL JUNE 1

AGWAY PRE-ENGINEERED BUILDINGS

FOR AGRI-BUSINESS AND COMMERCIAL USES

AN AGWAY BUILDING TO MATCH YOUR INDIVIDUAL REQUIREMENTS



Farm equipment represents a growing investment. Keeping it in "ready-to-go" condition calls for the proper shelter to aid your maintenance program. Agway has the layout and size to match your equipment storage requirement . . . and the door design to give you the accessibility you want.



The tested construction techniques Agway has perfected for farm buildings are also an economical way to provide space for many commercial operations, such as garages, repair shops, warehouses, freight sheds.



Agway functions as the general contractor, taking the entire burden off your shoulders and allowing you to concentrate on what you know best — your own business. Under this system, you have only one person to deal with: Agway. Shown above is a construction supervisor, who makes sure your building is erected according to plans.



The first criteria of the Agway building is meeting your operational objectives, whether it is a livestock shelter or a utility building. The second benefit assured by Agway building service is the combination of quality materials and tested construction technique that will assure a trouble-free building for generations.



CALL TODAY AND ASK FOR AN APPOINTMENT

SUPPLY CENTER

1027 Dillerville Road, Lancaster

24 Hour Service Daily

Ph: 717-397-4761