

Miss McCartney, IFYE Delegate, Returns Home from Brazil

Editor's Note: Miss Davida McCartney, Chester Springs, Chester County, recently returned from her assignment in Sao Paulo, Brazil. She had to return early due to difficulty in getting her visa renewed. Miss McCartney reveals she is available to speak to your groups. To make arrangements, contact her at 215-458-8446.

Greetings from Chester County, Pennsylvania. Yes, I'm back from Brazil. My stay was cut short just when I was getting really involved with the youth programs. I was indeed sad to leave my wonderful Japanese-Brazilian family and all my new South-American friends, but now that I am home, I am happy to be here.

There was just time for two

weeks of touring other regions on my way out of Brazil. I had been acquainted with only the Southeast region, including the State of Sao Paulo which was my home. So I first travelled South of the Paraguayan border to see the fantastic Iguazu Falls, greater in height and width and expanse than Niagara, and with a greater volume of water in the rainy season. About six hours away I visited Vila Velha, another natural wonder, an interesting group of winderoded rocks.

Then, heading northward, I stopped in the 11-year-old ultra-modern capital Brasilia, situated on a high central plateau, far from the other main cities of the land. The new architecture is striking, and the solution to the housing problem unique. The



Miss Davida McCartney
Chester County IFYE

"super blocks" are big dormitory-like buildings with shopping and educational areas nearby.

Leaving this newness, I flew to old Salvador in the NE region. This is a city with a church or chapel for every day of the year. I had time to visit only a few of the many beautiful old Catholic churches dating from the 1600's. I also met and stayed with the wonderful family of Marcello Mariano da Silva who had spent six months of last year in Chester County with the Robert Brigham family on the Youth for Understanding Program.

In Pernambuco I was able to visit friends and former Lancaster County 4-H'ers Don and Ginny Wivell Ranck who were doing social work with the

Mennonite Central Committee. There I enjoyed meeting many of the local Brazilians and seeing the good work Don and Ginny were doing. The hilly countryside gives the appearance of a mammoth sugar cane field. I saw cowboys practicing for the rodeos, and joined in a traditional fisherman's dance on the beach in Recife.

The last stop in my Brazilian tour was in the port of Belem in the northern region. Daily there is a large open-air market by the shore where you can buy almost anything. My schedule didn't permit me to hop a boat up the river, and since both my arrival and departure flights in Belem were in the middle of the night, I did not see the mighty Amazon. Though this was a disappointment, I am thankful to have managed to cram a lot of sightseeing into my limited travel time.

Now that I'm back with both feet on Pennsylvania ground, I'm readjusting to life American style, where cans and can openers, plastic bags, and electricity aren't luxuries. Equipped now with a second-hand set of wheels and a new slide projector, I'm just about ready to set out again, this time to tell my impressions of Brazil, with the help of the pictures I took that escaped being lost in the mails between here and there.

A special big thank you to all who helped underwrite this unforgettable experience with your contributions and letters and good wishes. If you'd like me to give an illustrated talk to your group on YDP work in Brazil, please get in touch.

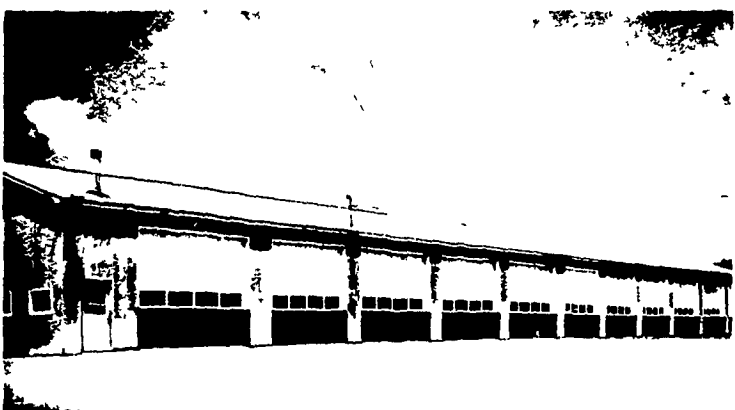
Davida McCartney

AGWAY

SPECIAL 5% OFF UNTIL JUNE 1
AGWAY PRE-ENGINEERED BUILDINGS
FOR AGRI-BUSINESS AND COMMERCIAL USES
AN AGWAY BUILDING TO MATCH YOUR INDIVIDUAL REQUIREMENTS



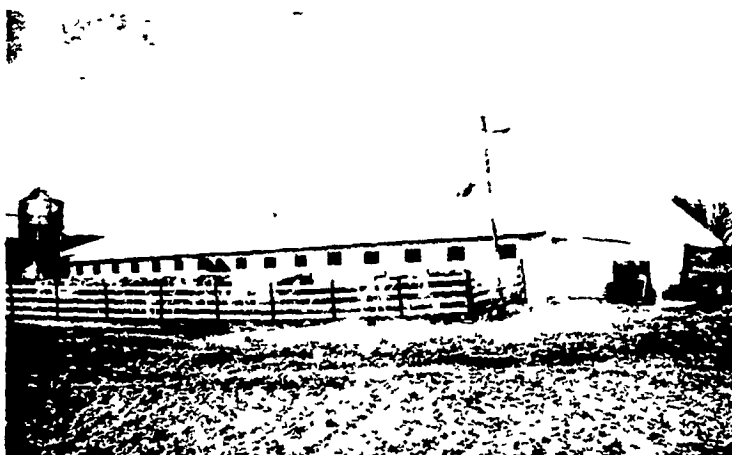
Farm equipment represents a growing investment. Keeping it in "ready-to-go" condition calls for the proper shelter to aid your maintenance program. Agway has the layout and size to match your equipment storage requirement . . . and the door design to give you the accessibility you want.



The tested construction techniques Agway has perfected for farm buildings are also an economical way to provide space for many commercial operations, such as garages, repair shops, warehouses, freight sheds.



Agway functions as the general contractor, taking the entire burden off your shoulders and allowing you to concentrate on what you know best — your own business. Under this system, you have only one person to deal with: Agway. Shown above is a construction supervisor, who makes sure your building is erected according to plans.



The first criteria of the Agway building is meeting your operational objectives, whether it is a livestock shelter or a utility building. The second benefit assured by Agway building service is the combination of quality materials and tested construction technique that will assure a trouble-free building for generations.



CALL TODAY AND ASK FOR AN APPOINTMENT

SUPPLY CENTER

1027 Dillerville Road, Lancaster

24 Hour Service Daily

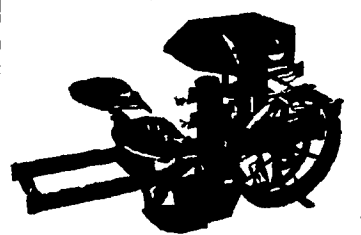
Ph: 717-397-4761

My Neighbors



"I never dreamed I'd acquired this much junk during my stay here..."

"THE GENUINE MECHANICAL TRANSPLANTER"



- Amazing "Flo-Check" Water Valve (Patented) with Magic Air Control to assure uniform water supply to the plants regardless of water level in barrel.
- Manual Shutoff with Automatic Roller Reset on Valve.
- Positive Action, Self-Cleaning, Neoprene Plant Grippers.
- Bronze Oilite Main Bearings
- Large Adjustable Plant Trays.
- Both Tractor and Horse-drawn.

Sold and Serviced By

LESTER A. SINGER

Ronks, Pa.

Phone Strasburg 687-6712