

Hog Prices

New Holland Auction

Monday, May 8
Hogs 1052: Barrows & Gilts: Strong to 75c higher.
US No. 1-2 190-240 lbs. 26.25-27.50; US No. 1-3 190-240 lbs. 25.75-26.25; US No. 2-4 240-260 lbs. 25.50-26.00; US No. 2-4 170-190 lbs. 23.50-25.50.
Sows: US No. 1-3 300-550 lbs. 20.00-22.50.
Boars: 20.00-21.50.

Vintage Auction

Tuesday, May 9
Barrows and Gilts 50-1.00 higher
Barrows and Gilts — US 1-2 200-240 lbs. 26.25-26.50; US 2-3 195-250 lbs. 25.75-26.25.
Saturday, May 6
Hogs 798: Barrows & Gilts mostly 50c to 75c higher.
US No. 1-2 210-245 lbs. 26.25-26.85, US No. 1-3 195-245 lbs. 25.50-26.10, US No. 2-4 250-285 lbs. 23.25-25.60
Few US No. 2-4 180-190 lbs. 24.25-24.50
Sows: US No. 1-3 330-575 lbs. 20.75-21.25
Few US No. 2-3 335-420 lbs. 17.75-19.25.
Boars: 19.00-20.75.

Lancaster Market

Monday, May 8
Hogs: Barrows and Gilts 50-1.00 higher.
Barrows and Gilts: US 1 200-235 lbs 27.00-27.50; US 1-2 200-240 lbs. 26.25-26.75, US 2-3 195-250 lbs. 25.75-26.25

LEBANON VALLEY LIVESTOCK MARKET, INC.

1 mile east of Fredericksburg along Route 222

PHONE JONESTOWN 865-2881

Sale every Tuesday at 1:30 P.M. starting with feeder cattle and pigs.

Lancaster Auction

Wednesday, May 10
Barrows and Gilts mostly steady.
Barrows and Gilts — US 1 220-230 lbs. 27.50; US 1-3 200-255 lbs. 25.75-26.35; most sales 26.10-26.25

Peoria Auction

Hogs: 3000. Active, opening 50-75 higher.
US 1-2 200-230 lbs. 26.50-27.00, 30 head 27.25; 1-3 200-250 lbs. 26.00-26.50; 2-3 240-270 lbs 25.50-26.00.

Indianapolis Auction

Hogs: 2000. 75-1.00 higher, active
US 1-2 200-240 lbs. 26.75-27.25; 1-3 200-250 lbs 26.50-27.00.

Lebanon Valley Auction

Tuesday, May 9
305 Head Hogs
Barrows and Gilts 75 cents to \$1 higher.
Barrows and Gilts: U.S. 2-3 200 - 240 pounds 25.85 - 26.35, couple lots 26.50; 2-4 185-250 25.35-25.85
Sows: U.S. 1-3 300 - 500 pounds 20.00 - 21.00.

St. Louis Auction

Hogs: 4500. 50-75 higher. US 1-3 200-240 lbs. 26.75-27.00, 100 head 1-2 210-230 lbs 27.25; 2-3 200-260 lbs. 26.00-26.75.

Nottingham Auction

Monday, May 8
Hogs. 210-220 pounds 24.60-25.10
Sows: 400-450 pounds 18.50-19.00.
Boars: 300-365 pounds 18.50-19.10.

Regional Hay Prices

For Southeastern and South Central Pennsylvania
Monday, May 8
(All hay No. 2 and better, prices paid by dealers at the farm price per ton).
Hay and straw steady, movement slower in some areas
Alfalfa 40.00-50.00
Timothy hay 25.00-35.00
Mixed hay 30.00-40.00
Straw 25.00-30.00
Mulch 15.00-20.00

Omaha Cattle

Thursday, May 11
Slaughter steers fully steady. Heifers strong to 25c higher. Cows 25-50c lower in slow trade most of week but improved action late. Bulls steady. Yearling feeder steers and heifers fully steady, fleshy two-way steers weak.

Four day receipts 19,000 as compared 19,400 previous week and 20,100 year ago. Slaughter steers approximately 40 per cent, heifers 41 per cent, cows 8 per cent, feeders 7 per cent. Stability and good demand were major characteristics of the fed cattle trade during the week under review. Live prices weakened only slightly the fore part of the week under the influence of a bearish carcass trade, and late trading was active with all buying interests aggressive for numbers. Most had entered the week without large live inventories on hand. Heifers were in particularly broad demand. Well-finished 1200-1300 pound steers usually found reliable outlet, but best inquiry was generally on Choice 1050-1150 pound weights which would produce a carcass under 700 pounds.

Slaughter Steers: Five loads High-Choice and Prime 1185-1373 pounds 3-4 35.85-36.00, moderate volume same grade 1094-1363 3-4 35.50-35.75 during week. Choice 975-1275 closed 34.50-35.50, load mostly Choice 1425 pounds 4-5 34.10. Mixed Good and Choice 950-1225 34.00-34.50, occasionally 34.75. Good mainly 32.50-34.00, Holsteins 2-3 31.50-31.75. Standard and Low-Good 30.50-31.50.
Average cost slaughter steers first three days 34.83 average weight 1144 pounds as compared 34.68 and 1144 pounds previous week 32.58 and 1135 pounds year ago.

Slaughter Heifers: Two loads Prime 1049 pounds 3-4 35.75, moderate number High-Choice and Prime 950-1100 3-4 35.25-35.50. Choice 825-1050 2-4 closed 34.00-35.25. Mixed Good and Choice 750-1000 33.50-34.25. Good 30.00-33.50. Standard and Low-Good 28.50-30.00.

Cows: Utility and Commercial mainly 24.00-25.50, few Utility Dairybreds 25.75-26.00. Canner and Cutter 21.50-24.00, Mixed Cutter and Low-Utility 24.25-24.50. Shelly Canner 19.00-21.00
Bulls: Utility, Commercial and Good 27.50-31.00, Commercial 1-2 31.25-31.50. Cutter and Low-Utility 24.00-27.50.

Feeders: Outshipments around 1,500 little different from previous week, large share two-way steers, but moderate number yearling heifers and few lots yearling steers. Yearling steers and heifers fully steady, fleshy steers weak.

Two loads Choice 570-579 pound steers 41.00-43.00, load Good and Choice 583 pounds 36.00. Several loads Choice 940-1036 35.00-35.25, High-Good and Choice 926-1137 34.00-34.75.

Several strings Choice 537-654 pound heifers 36.50-39.50, High-Good and Choice 674-850 32.50-34.50.

Futures Trading

(Closing bids as of Thursday, May 11)

	Chicago Cattle	Chicago Hogs	New York Maine Potatoes	Chicago Fresh Eggs
May				28.25
June	36.50	28.40		29.45
July		28.85		33.30
August	35.30	28.52		36.00
September				40.55
October	34.20	27.45		39.50
November			2.81	41.90
December	34.25	27.75		42.10
February '73	34.40	27.40		
March '73	34.07	25.90	3.09	
April				3.30
May '73				3.81

Trend - Cattle are higher, Hogs are higher, Potatoes are steady and Eggs are lower.

Oklahoma City

Thursday, May 11
Estimated Receipts 10,000
Same Day Last Week 14,209
Same Day Last Year 15,428
Fairly active, feeder cattle and calves generally steady to strong, except feeder heifers over 500 pounds about steady; majority receipts High Good and Choice 500-850 pound steers and 450-650 pound heifers in moderate to fairly fleshy condition arriving from Graze-out wheat areas; fairly large attendance buyers. At the Wednesday feeder auction, 5,938 head went thru the ring and the two-day total should exceed 16,000 head.

Sales as of 12:30 P.M.
Feeder Steers: Small lots Choice 400-500 pound 43.00-47.00; 500-600 39.50-44.50, small lot 529 pound at 46.80; 600-700 37.25-41.50; 700-800 37.00-39.00; 800-1011 34.50-37.70; Mixed Good and Choice 335-475 43.00-47.00; 500-700 37.00-38.00; 700-1003 34.50-37.00; Good 380-500 38.85-39.50; 500-700 35.75-36.75; few 759-807 33.00-35.50; few mostly Good 675-982 Holstein steers 31.90-33.50.
Feeder Heifers: Two small lots Choice 359-379 pound 39.00 and 43.00; 400-500 36.00-39.75; 500-600 35.00-36.70, small lot 506 pound at 37.60; 600-700 34.00-36.20; 700-788 33.80-35.80, Mixed Good and Choice 300-500 34.75-37.00, part load thin 350 pound at 40.10; 500-783 32.00-34.75, few Good 477-675 32.00-33.00.

Lebanon Valley Auction

Tuesday, May 9
387 Head Cattle
Compared with last Tuesday's market, slaughter steers unevenly steady, spots 50 cents lower. Slaughter cows unevenly steady. Slaughter bulls steady to 75 cents lower.

Steers: Choice 1,000 - 1,250 pounds 34.75 - 36.00; Good 32.75 - 34.35; Standard 30.60 - 32.60.

Heifers: Choice (individual) 33.50; Stardard 29.00-31.25.

Cows: Utility and High Dressing Cutter 26.50 - 28.75, few to 30.00; Cutters 24.85 - 26.50; Canners 23.75 - 25.25; Shells down to 22.75.

Bulls: Good 33.00 - 35.00; Utility and Commercial 31.00 - 34.75, couple 36.35; Cutters (few) 27.50 - 30.00.

177 Head Veal Calves
Vealers grading Good through Prime steady to \$2 lower, Utility and Standard \$2 higher.

Prime 57.50 - 60.00; Choice 52.00-56.00; Good 51.00- 54.00; Standard 50.00-53.00; Utility 90-120 pounds 42.00 - 50.00; 70 - 85 pounds 36.50 - 40.00.

Farm Calves: Bulls 75 - 115 pounds 46.00 - 60.00; Heifers 90 - 140 pounds 50.00 - 65.00.

U. S. Inspected Livestock Slaughter

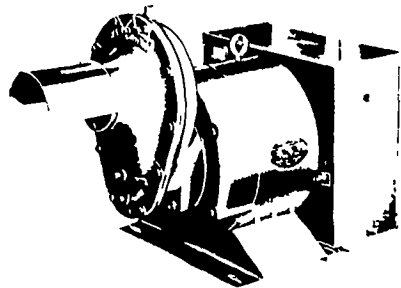
Estimated Daily Livestock Under Federal Inspection

	CATTLE	HOGS	SHEEP
Week to date	479,000	1,272,000	149,000
Same period last wk	488,000	1,248,000	148,000
Same period last yr.	481,000	1,375,000	151,000



WORLD'S LARGEST MFG. OF TRACTOR-DRIVEN ALTERNATORS

TRACTOR DRIVEN ALTERNATORS



PTO Units Available From 7 KW to 60 KW 20 Year Warranty

POWER WHEN YOU NEED IT MOST

1800 RPM

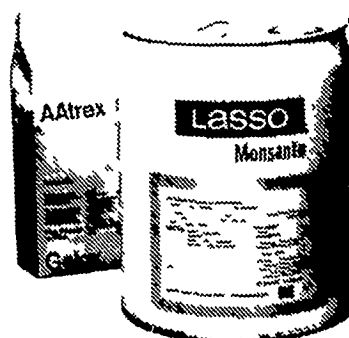
INSIST on a FREE WINPOWER DEMONSTRATION at YOUR Farm Before You Buy ANY Tractor Driven Alternator

L. J. EDWARDS
FARM SALES, Manager

ELECTROMECH

1 ELECTROMECHANICAL SERVICE
ROUTE 222, EPHRATA, PA. 17522
PHONE (717) 733-7911

ELECTRIC MOTOR • GENERATOR • POWER TOOL SPECIALISTS



Certainly Lasso® plus atrazine tank mix controls giant foxtail in corn.

That's what you expect from your herbicide.



ORGANIC PLANT FOOD CO.

2313 NORMAN ROAD LANCASTER, PA.

PH: 397-5152