

Rough and Tumble Tractor Pull Association Organizes

The third meeting of the newly organized Southeastern Pennsylvania Tractor Pulling Association met at the Rough and Tumble Gift Shop. The minutes were approved as read.

A roll call of officers was taken. Officers previously elected to serve are: Harold Rieneer, Leola, president, John Stauffer, East Earl RD2, secretary, Lester Houck, Kinzer RD1, vice president, and Eby Hershey, Gap RD2, treasurer.

A committee of directors ap-

pointed to serve include J. Nafzinger, Amos Stauffer, Martin M. Weaver and Ed Margerum.

Old business was discussed. There was no decision on the speed to be pulled in pure stock class. A motion was made to pull according to state rules which would be six miles per hour for

stock and eight miles per hour for super stock and modified. The motion was carried and so ordered.

The treasurer reported no transactions. A motion was made to vote on a selection of three names for the local pullers association and the motion was carried. Rough and Tumble

Tractor Pull Association was the title voted for the local club.

A scales committee was appointed for operating the scales and measuring draw bars at tractor pulls. They are: Ed Margerum, Mike Tanner, Larry Halls and Wilbur Slaymaker.

A committee was appointed to register tractors at Rough and Tumble pulls. They are: John Stauffer and Eby Hershey.

The judge committee was appointed and are: Warren Fulmer and Less Houck, Russ Snyder and Ben Fisher.

Dan Brubaker, John Stauffer and Less Houck were appointed as sled operators.

An announcer was to be checked into.

New business was brought on the floor. Classes to be run were discussed. A motion was made and carried to run all sanctioned pulls at Rough and Tumble which

would include the points system as follows:

First place, 200 points; second place, 150 points; third place, 125

points; fourth place, 100 points; fifth place, 75 points; sixth place and up, 10 points.

To receive points, the entrant must be a member of the State Association. Each pull has to be sanctioned for the points system for \$25 each pull. Points will go against tractor; driver must be a state member.

A motion was made to pull 5, 7, 9, 12 and 15 thousand pound classes in stock and super stock and 7 and 9 thousand point classes for modified. Motion was carried.

A committee was appointed to promote tractor pulling in the local area. Less Houck, Eby Hershey and Clem Stauffer will serve on this committee.

A motion was made and carried for membership dues of \$4 each for the club.

May 15 was set for work night for the May 20 pull.

York County Students Capture Highest Awards At Livestock Exposition

Donald Sunday, York, was named grand champion showman at the 55th Little International Livestock Exposition held recently at University Park, and Miss Beth Boyd, York, was named reserve grand champion showman.

Sunday was also named reserve champion August showman, champion Hampshire hog showman, champion Hampshire hog fitter, and champion swine showman.

Miss Boyd's accomplishments included champion Shorthorn showman, champion beef showman, reserve champion Hampshire hog showman, and reserve champion swine showman.

Among winners in the swine

Garden of Eden. Most scholars agree that the garden of Eden was somewhere in the vicinity of the Tigris-Euphrates valley. Some locate it about 100 miles north of Baghdad, others believe it was located on the site of the sacred city of Eridu in Babylonia near the Persian Gulf.

division was Abram Fisher, Lancaster, reserve champion Yorkshire fitter.

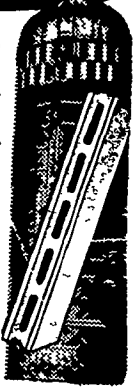
• MORE MILK • MORE MEAT
• MORE PROFIT

WITH

MADISON SILOS

• Feed high-quality, nutritious, corn and grass silage all year for more milk, more meat and more profit

• Low original cost
• Low upkeep cost
• More than 60,000 Madison Silos in use



Madison Silos

Div. Martin Marietta Corp.
1070 Steinmetz Rd.
Ephrata, Penna. 17522
Ph. 733-1206

LOCAL DEALERS

Frank Snyder
Akron 859-2688

Caleb Wenger
Quarryville 548-2116

Landis Bros. Inc.
Lancaster 393-3906

Carl L. Shirk
Lebanon 867-3741

Sollenberger Farm Supply
Centerport, Pa.
Ph. 215-926-7671



Certainly Lasso® plus atrazine tank mix controls fall panicum in corn.

That's what you expect from your herbicide.

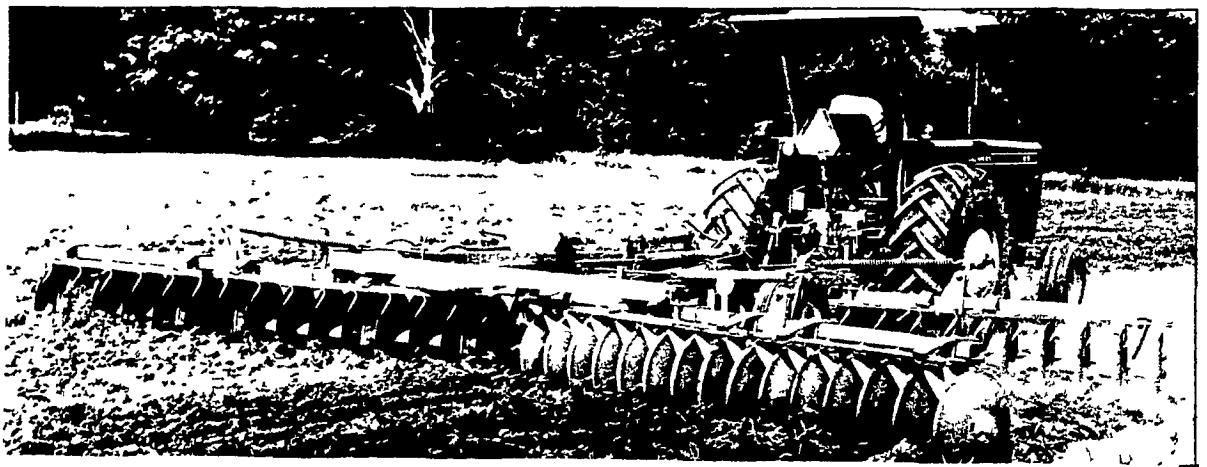


CHEMGRO FERTILIZER CO.

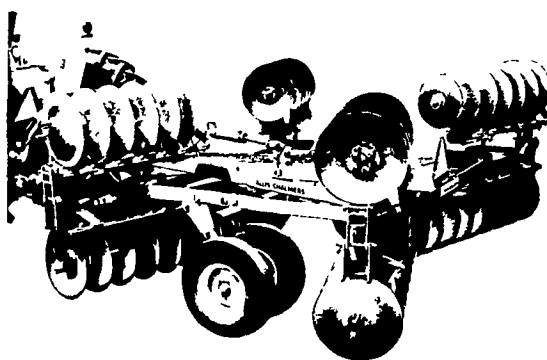
State Rd., Box 218, East Petersburg, Pa.
Phone 717-569-3296

New 2300 SERIES TANDEM DISC HARROWS

ALLIS-CHALMERS



TOUGH, FAST CUTTERS IN 9' TO 21' WORKING WIDTHS



Custom blade spacing lets you match harrow to soil conditions
Fine cut—7½" front, 7½" rear
Medium cut—8½" front, 7½" rear
Tough cut—8½" front, 8½" rear

Choice of 18", 20" and 22" blade diameters to match your discing needs

Choice of 10, 8 and 7-gauge blade thicknesses gives you the strength you need for your soil conditions

Back-up plates on all blades provide extra strength near the spool to combat breakage and rock damage while leaving razor-sharp edges for cutting

Outer gang blades are 2" less in diameter than other blades to leave a level, finished field surface

Adjustable gangs are simple to move to the discing angle you need for a smooth, level seedbed in any soil

Heavy weight per blade—approximately 75 lbs—helps harrow penetrate deep and cut clean

Heavy-duty bearing brackets soak up shock last for years under normal conditions.

Parallel lift gives you the ground clearance you need to transport a wide disc harrow.

N. G. Myers & Son
Rheems, Pa.

Roy H. Buch, Inc.
Ephrata, R. D. 2

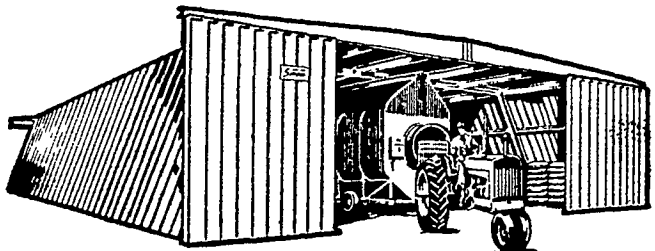
L. H. Brubaker
Lancaster, Pa.

Nissley Farm Service
Washington Boro, Pa.

Grumelli Farm Service
Quarryville, Pa.

new from **BEHLEN**

the economy
Spartan



Brawny Building, Puny Price

High strength steel - heavy gauge wall panel - choice of two beautiful, durable colors or galvanized steel . . . in 40' or 48' widths. Big 13' x 20' or 13' x 24' doors. Choose from a wide selection of accessories.

The new Behlen Spartan brings you clear-span economy in a modern farm building . . . without sacrificing quality.

Let us show you how you can own a BEHLEN quality building for less than you ever thought possible.

SEE:

FREY BROS.

Fred Frey, Mgr.

R. D. #2, Quarryville, Penna. 17566 Ph. 717-786-2235