

A Look at Agway's New Distribution Center

The new Agway Distribution Center which opened last week near Elizabethtown is a marvel of technological efficiency. The 130,000 square foot, steel insulated structure occupies a 34-acre site between old Route 230 and Zeager Road, west of Elizabethtown and was built by Cumberland Buildings Corp. of Carlisle.

"The Elizabethtown facility is the second of three such centers planned by Agway," Goddard noted "One has been operating at Geneva, N.Y., since 1970, and a third, at Westfield, Mass., is scheduled to open in June."

The 130,000-square-foot, steel insulated structure occupies a 34-acre site between old Route 230 and Zeager Road, west of Elizabethtown and was built by Cumberland Buildings Corp. of Carlisle.

Some 10,000 products, including farm mechanical and electrical equipment, paint, tools and hardware items; tires and automotive accessories; building supplies, and home, lawn and garden commodities are stocked at Elizabethtown.

The new facility serves 200 Agway stores and dealers in Pennsylvania, New Jersey, Maryland and Delaware.

One of the features of the new

distribution center is its hookup with a computer at Agway headquarters at Syracuse, N.Y., which keeps records of all items in stock for faster and more accurate order filling and inventory maintenance.

To fill orders, employees guide automated equipment which has been programmed to follow the most efficient route in gathering items. A continuous chain moves tow carts through the building, gathering items for orders and replenishing stock.

A giant "stacker crane" system retrieves large and bulky items from a 50-foot high storage area of the building. A punch-card system directs the crane to raise, lower and stack palletized supplies.

The center has loading and unloading facilities for ten tractor-trailers and three rail cars.

Ervin J. Jordie of Elizabethtown, former manager of Agway's Geneva Distribution Center, will manage the new facility. Guy Byrd, manager of Agway's West Concord, Mass., warehouse, will serve as plant superintendent. A total of 55 persons will be employed when the facility operates at full capacity in June.

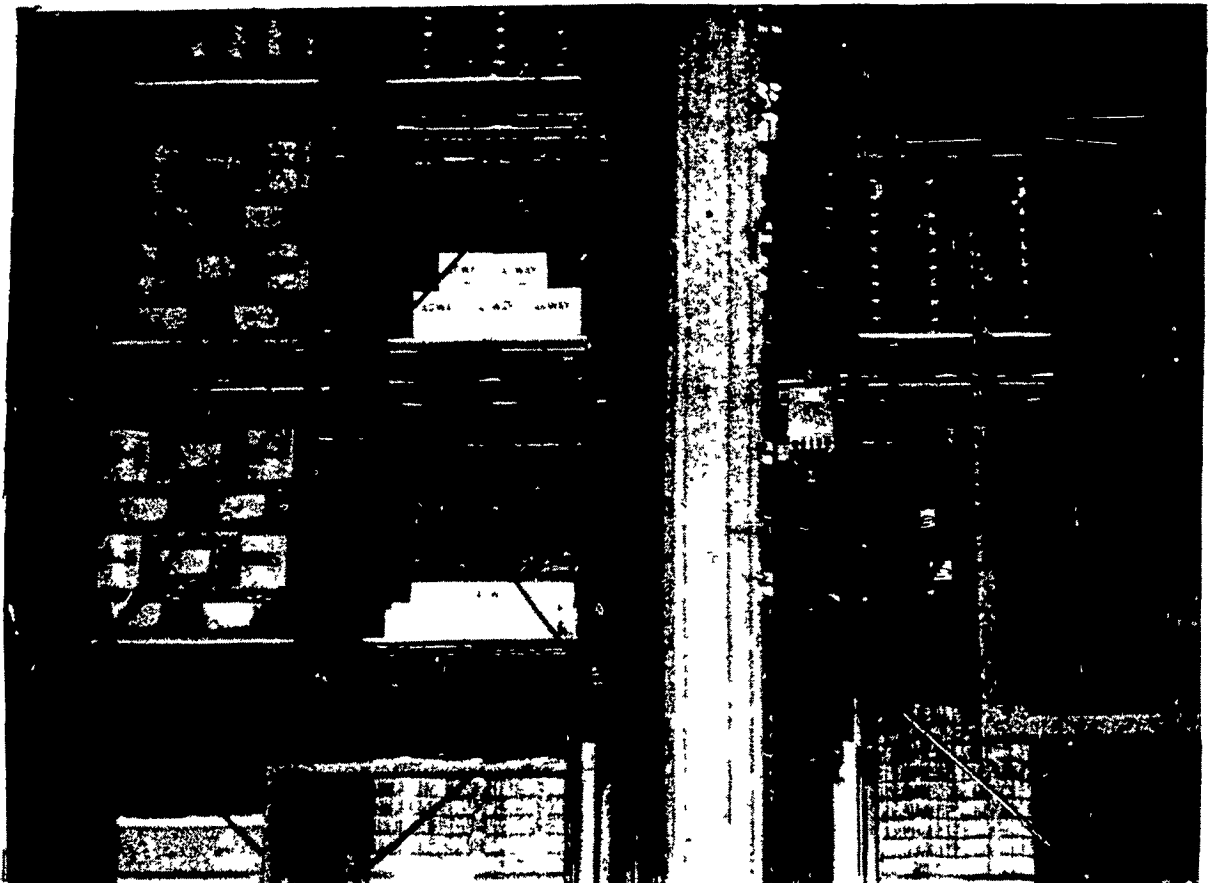


These trucks run on a chain driven belt in a continuous circle around the

distribution center so that items can be pulled from stock easily and quickly.



Items which are in demand are stocked on pallets on shelves and a towmotor is used to load stock and remove stock from the shelves.



giant stacker crane moves items too heavy for human hands up to 50 feet in height and stores them



Agway's ultra-modern distribution center features cantilever shelves for long, hard to stock items such as pipe.

ANNOUNCEMENT

As of April 24, 1972

Mr. J. Wilbur
Sollenberger

WILL BECOME ASSOCIATED
WITH

PAUL I. SHEAFFER
INSURANCE AGENCY

Intercourse, Pa.
Phone 768-8236 - 392-8900 - 394-1753