

## State Grange Speaks Out On Milk Marketing Act

More effective enforcement of the present Milk Marketing Act would be of greater benefit to the consumer and the state's dairy industry than drastic amendments proposed by the State administration, the Pennsylvania State Grange has declared.

A Wayne Readinger, master, said a score of top dairy

producers who are also Grange leaders, meeting recently as a special dairy review committee, reaffirmed his organizations policy of support for the Milk Marketing Act as presently constituted.

Critical of what they termed lax enforcement of the milk law, the farm group charged present

Milk Marketing Board officials with having "lost sight of the law's main intent — maintenance of a sound milk industry in the Commonwealth"

Violations of the milk law were said to be commonplace, and delays in needed legal action where reported to be likewise the rule rather than the exception

Readinger said concerned dairy leaders contend that the consuming public and the state's billion dollar farm economy (nearly half of it in dairying) have been "well served by the Milk Marketing Act for nearly forty years"

"Milk prices are not out of line when compared to other food costs and give producers no more than a fair return on their investment"

He said the Grange was influential in enactment of the milk law in the mid-30's and has supported it ever since He credited the act with having restored order to a demoralized dairy industry Too often, he charged, "attacks on the milk law are politically motivated or result from misinformation or misguided zeal"

### A Heavy Roller Compacts Yard Soil

It's almost impossible to smooth an uneven sections of turf with a roller, say Extension agronomists at Pennsylvania State University A heavy roller will compact your soil—preventing the penetration of water, nutrients, and air—essentials of plant growth The only time rolling is practical is when seedling plants heave out of the soil with winter's frost Use a light roller to push them back into good contact with the soil

## Jaycees to Present Program by Eshelman

The Elizabethtown Jaycees will present a program featuring Glenn Eshelman at 8 p m Friday, May 12, at the Elizabethtown Area High School auditorium

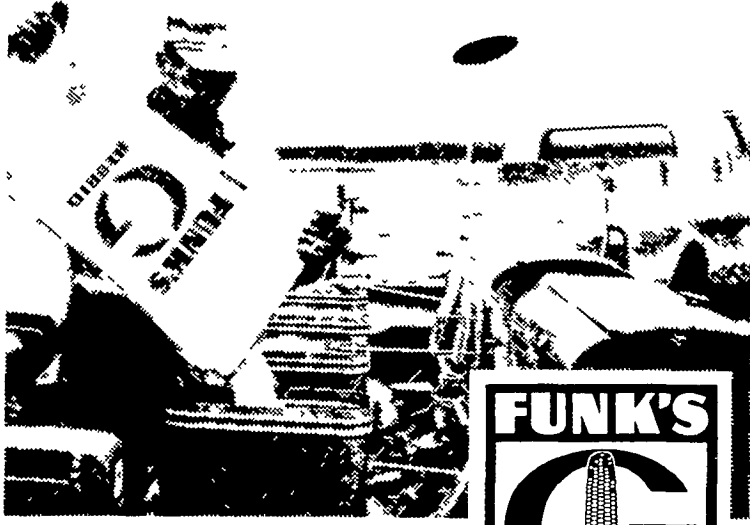
The program will include presentations of "Where the Mountains Meet the Sky" and "Almost Paradise" Using three projectors with accompanying dynamic stereo music and narrations, outstanding scenery of the United States and Canadian Rockies, the breaking waves of the rocky coast of Maine to the towering peaks of the

Rockies, the sand covered deserts of the Southwest and the Cypress trees of the South, the wonders and beauties of our great natural land, its people and its promises will be portrayed

Advance tickets for the 90 minute inspirational program are available from any Elizabethtown Jaycee member

Unites States' egg production hit a record high of 71.6 billion eggs during 1971, up two per cent from the previous high (of 70.0 billion) produced during 1970

## Keep Your Planter Boxes FULL of Funk's G-Hybrids



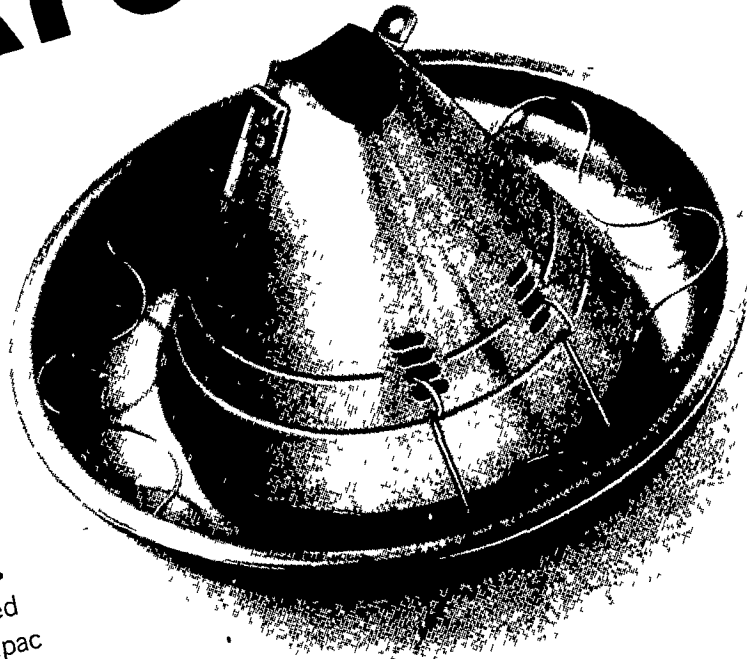
Plant the hybrids with proven potential for consistent high yields and profits. Funk's G-Hybrids!

Dependable Hybrids from Dependable People

**A. H. HOFFMAN SEEDS, INC.**  
LANDISVILLE, PA. 898-2261

Funk's is a Brand Name. Numbers Identify Varieties.  
Funk Bros Seed Co International Headquarters Bloomington Illinois 61701

# the OUT-PERFORMER



Big Dutchman pan feeders outperform all others in feed conversion, feed savings, bird feeding capacity, durability and uniform feed distribution Available with your choice of chain or auger conveyor

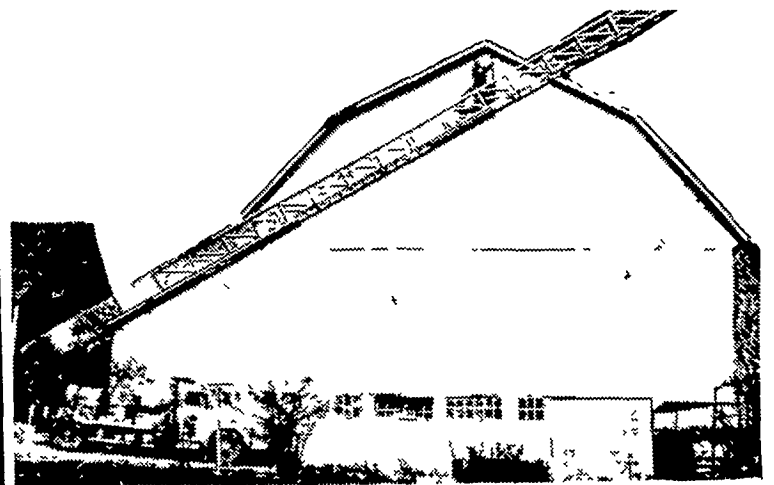
Get the details from your Big Dutchman Distributor, Branch, or write directly to our Marketing Manager.

**Big Dutchman®**  
ZEELAND, MICHIGAN 49464 USA

**USI** A U.S. INDUSTRIES COMPANY  
And that makes a world of difference  
215 Diller Ave., New Holland, Pa. 17557 . 354-5168



## WE USE BRUNING QUALITY PAINT AND IT DOES STAY ON!!!



Aerial Ladder Equipment Used To Paint Your Farm Buildings

- Modern and Efficient Method
- Reasonable Prices
- Over 15 Years Experience
- Spray-on and Brush-in Method Has Proven Satisfactory On Over 1500 Barns Of Our Well Pleased Customers.

CALL MR. MILLER FOR AN ESTIMATE NOW

**C. RALPH MILLER**

Spray-On and Brush-In Painter

R. D. 4, Manheim, Pa. 17545

Ph. 665-3388



## GET BARE GROUND WEED CONTROL

Pramitol® liquid gets rid of weeds where you don't want them. In fences. And around buildings, silos, feedlots, gas tanks, and pumps. It's great for knocking out weeds where you can't mow. Pramitol liquid works like a charm. One early spray keeps weeds down all season. Try Pramitol 25E liquid. You'll find all kinds of uses for it. Or, if you prefer, use easy to spread Pramitol pellets.

**Royster Company**

CALL YOUR ROYSTER DEALER TODAY