

Garden Spot Community 4-H Club Elects Officers

The Garden Spot Community 4-H Club held its first meeting at Conestoga Valley High School. There were 15 members attending.

Election of officers was held. New officers are: Patsy Mingle, president; Dwight Houser, vice president; Judy Risser, secretary; Jenny Wagner, treasurer; Lorraine Woodruff,

news reporter; Philip Risser and Roberta Myers, game leaders.

Al Lutz and Dwight Houser were elected to County Council.

Jay Irwin, associate Lancaster County ag agent, gave the members information on various projects which they can work.

News Reporter Lorraine Woodruff

Help Us Serve You

Don't assume we know about your farm organization's meeting. To get your meeting on our Farm Calendar, it's safer to assume we don't know.

Remind us by calling 394-3047 or 626-2191 or by writing to Lancaster Farming, 22 E. Main St., Lititz, Pa. 17543. You'll be helping us to serve you better.

P.S. — If you're not sure you told us already, we don't mind hearing from you again.

AVAILABLE NOW

SOYBEANS

These Top Yielding Varieties

- ★ Certified Amsoy-early variety.
- ★ Wayne-mid season.
- ★ Wabash-medium late, forage type.
- ★ Certified Cutler-medium to full season.

Contact us for complete information

P. L. ROHRER & BRO., INC.

Smoketown, Pa.

Ph. 397-3539

Report of Feb. Livestock Slaughter

Commercial production of red meat in the 48 states totaled 2,877 million pounds in February, up four per cent from a year earlier, according to the Crop Reporting Board. Commercial meat production includes slaughter in federally inspected and other slaughter plants, but excludes animals slaughtered on farms.

Beef production in February was 1,715 million pounds, up six per cent from the 1,616 million pounds produced in February 1971. The number of cattle slaughtered was also up six per cent and average live weight was three pounds more than a year earlier.

Veal produced in February was down 10 per cent from February 1971. There were 37 million pounds of veal produced. Calves

slaughtered during February were down 10 per cent, while average live weight increased four pounds.

Pork production in February totaled 1,081 million pounds, up one per cent from a year ago. The number of hogs slaughtered was

down three per cent. Live weight per head at 234 pounds unchanged from a year earlier.

Production of poultry meat in February totaled 758 million pounds. This figure is up 12 per cent from a year ago but eight per cent less than January.

Wholesale Cut Flowers

Pennsylvania continues to be a leader in the production of roses, chrysanthemums and carnations despite a mixed report on 1971 sales by the Pennsylvania Crop Reporting Service.

The wholesale of cut flowers produced in the Commonwealth in 1971 amounted to \$12,242,000, down nine per cent from a year earlier. However, potted mums jumped 32 per cent at \$1,401,000. The up-and-down year also

showed foliage plant sales off 23 per cent.

A survey of Pennsylvania flower growers indicated that they plan to produce more miniature carnations, gladioli, potted mums and foliage plants in 1972. The other principal varieties project a two per cent or less change for the coming year.

Pennsylvania ranks fourth in the production of flowers and foliage plants behind California, Florida and Colorado.

4-H Calendar

Wednesday, May 3

6:30 p.m. — Banker's annual meeting, "10 Outstanding 4-H'ers", Host Town Motel.

7:30 p.m. — Red Rose 4-H Baby Beef and Lamb Club, Farm and Home Center.

Nifty Needles 4-H Reorganize

The Nifty Needles 4-H Sewing Club elected the following officers for the new year:

Robin Fellenbaum, president; Julie Webber, vice president; Jane Keyser and Sally Slater, secretary; Jamie Maurey, treasurer; Patty Groff, news reporter; Rosemary Brubaker, song leader, and Lashon Bussell and Sue Slater, game leaders.

The club meets every-other Monday evening at the home of Mrs. Fellenbaum, 1580 Fruitville Pike, Lancaster. The club is only in its second year but is growing fast. There are already 24 members enrolled. Anyone wishing to join please call 397-9318 or 569-2552 for further information.

News Reporter
Patty Groff



Get MORE Meat/Milk/Egg Dollars From YOUR Grain

Your grain is great as an energy source, but weak and inconsistent in protein (amino acids), minerals and vitamins needed for really money-making production.

But blend your grain with WAYNE research-proved supplements . . . according to our customized WAYNE-MIX formulas and . . . PRESTO you have high-powered, nutritionally complete rations. Your return is many MORE meat, milk or egg dollars than from unfortified grain.

Get MORE for YOUR grain. Ask us about Wayne-Mix today.

As an authorized Wayne-Mix Dealer, we can build for you dependable quality rations at less cost . . . fitted to your specific need!

Feed for the difference innovations make. Feed Wayne.

WAYNE-MIX RATIONS

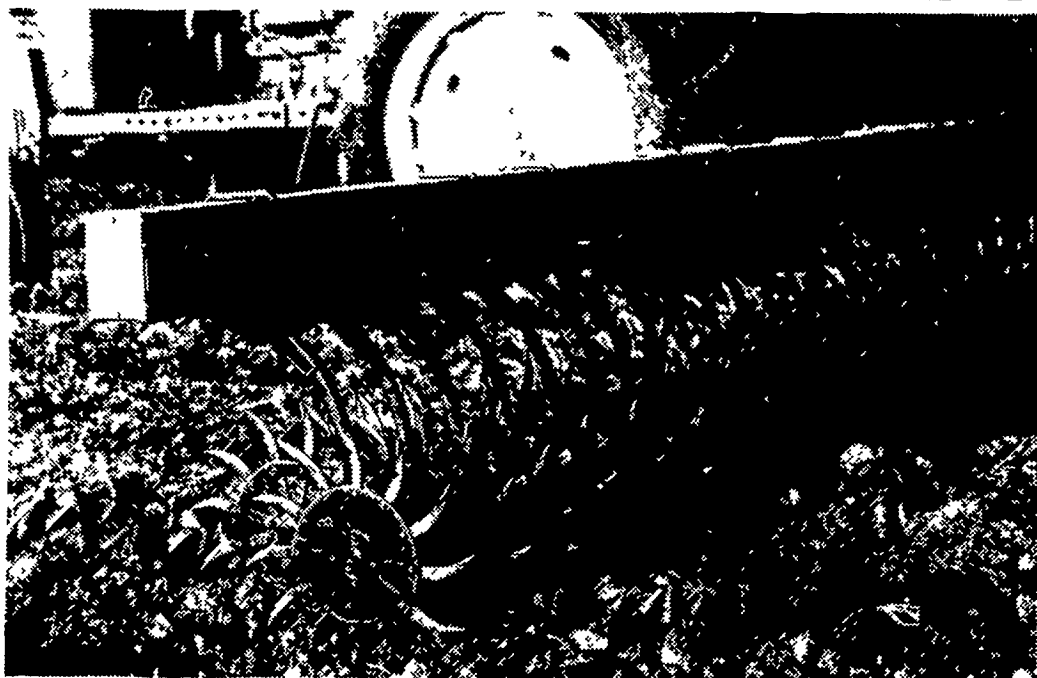
From Allied Mills The Innovators



USE WAYNE ANIMAL HEALTH AIDS TO KEEP YOUR LIVESTOCK AND POULTRY HEALTHY

- ROHRER'S MILL
R. D. 1, Ronks
- HEISEY FARM SERVICE
Lawn — Ph: 964-3444
- H. JACOB HOOBER
Intercourse, Pa.
- HAROLD H. GOOD
Terre Hill
- GRUBB SUPPLY CO.
Elizabethtown
- C. E. SAUDER & SONS
R. D. 1, East Earl
- HERSHEY BROS.
Reinholds
- WHITE OAK MILL
R. D. 4, Manheim

- MOUNTVILLE FEED SERVICE
R. D. 2, Columbia
- DUTCHMAN FEED MILLS, INC.
R. D. 1, Stevens
- STEVENS FEED MILL, INC.
Stevens, Pa.
- PARADISE SUPPLY
Paradise
Leola, Pa.
- POWL'S FEED SERVICE
R. D. 2, Peach Bottom
- H. M. STAUFFER & SONS, INC.
Witmer



All-new rotary hoe design—individual suspension makes every hoe wheel hug the soil

Flatland, bedded or ridged soil, rocks or stumps . . . these new rotary hoes work well in all conditions. Individual springs keep a constant down-pressure on each shank. Two wheels on each shank also move independently of one another. Interested? See us for full details.



Landis Bros. Inc.
Lancaster 393-3906

Shotzberger's
Elm 665-2141

M. S. Yearsley & Sons
West Chester 696-2990

A. B. C. Groff, Inc.
New Holland 354-4191