

Farm Women Societies

Society 27

"Special Friends" Night was enjoyed by Society 27 at the home of Mrs. James Garber, Mount Joy RD2, on Tuesday. Each member introduced her "special friend" as roll was called.

Mrs. Harry McCleneghan led devotions. Co-hostesses were Mrs. James Brubaker, Mrs. Arthur Wenger and Mrs. Russel Swarr

The speaker for the evening, Miss Joann Hess, Mount Joy, demonstrated the art of eating and identifying objects while being handicapped by blindness. She told of the frustrations and amusing incidents one encounters as a blind person. She also stressed that blind persons should not all be placed in one category; they are as individualistic as any sighted person, she said.

She demonstrated her musical talent by singing folk type and inspirational songs accompanying herself on a bass ukulele.

The president, Mrs. Ray Sauder, conducted the business session, when it was decided to donate \$25 to the Lancaster Association for Retarded Children.

Mrs. Robert Kauffman was chosen to represent Society 27 in the Farm Woman of the Year Contest

On May 16 members and guests will travel by bus to Longwood Gardens and the Winterthur Museum

Society 9

Farm Women Society 9 entertained Society 23 members and County officers at Camp Snyder, Marticville Boys Club. Mrs. Clarence Cartter led

devotions.

Crosses from the collection of Mrs. A. Tuttsy, Millersville, were displayed and she related stories of the crosses

During the business portion of the meeting, conducted by Mrs. J. Edward Brenneman, plans were made for a bus trip to New Hope and Peddler's Village May 16. Plans include a ride on the historic canal at New Hope.

Reservations may be made by contacting Mrs. Brenneman, 914 Penn Grant Road

Society 16

Farm Women Society 16 held its monthly meeting recently at the Akron Restaurant. Devotions were led by Mrs. Lillian Hanna. The Society voted to donate \$25 for the County project, LARC

It was announced that Mrs. Helen Reinhart and Mrs. Edna Miller will serve as volunteers at the USO on May 6.

The Society will not hold a meeting in May. The next meeting will be held in June at Middle Octorara Presbyterian Church when members of Society 16 will entertain members of Society 30

Vegetable Research Project Initiated

A long-range research study to assist the State's vegetable growers produce high quality crops more economically has been initiated by Pennsylvania State University's department of horticulture

The project, to be conducted at the Rock Springs agricultural research center, has been made possible by a \$900 a year contribution from the Pennsylvania Vegetable Growers Association. Probable duration of the project will be between five and 10 years. "Permanent field plots having various nutritional treatments such as fertilizer, organic material, and sewage sludge will be set up," said Robert F. Fletcher, Extension vegetable crops specialist. "Results of periodic soil testing will be used to determine fluctuations as influenced by the various treatments"

This project is a combination of various disciplines within the department of horticulture and should prove beneficial to both

the producer and consumer, the Extension specialist emphasized

One major aspect of the project will be the simulation of various soils and fertility conditions that exists in commercial vegetable fields throughout the State. By using this system, practical problems occurring frequently in vegetable production can be analyzed

Fletcher points out that another part of the research work will be devoted to the effects of soil pollution on yield quality and quantity. Still another study will focus on organic gardening

Penn State department of horticulture faculty members involved in the research project are Dr. E. L. Bergman, Dr. Peter A. Ferretti, Dr. R. W. Helpler, Dr. C. J. Noll, and Fletcher

If you didn't eat a total of 321 eggs — either shelled or processed — during 1970, you're behind the average as reported by the USDA

Spring Plowing Reported Late

Commonwealth farmers were prepared for full scale field work last week. However, fields were generally too wet for entry. A few days of good drying weather enabled farmers to squeeze in some field work on higher and better drained soils. Heavy rains at the beginning and end of the week kept top soil moisture supplies on the high side, with two-third of the reporters indicating surplus moisture conditions. Spring plowing reported at about 15 per cent complete and a week behind last year

Although farm activities were limited, some progress was made on spring plowing, seedbed preparation, top dressing, orchard work and manure hauling. Hay and pasture crops continue

slow, steady growth. Some old alfalfa stands were damaged by freezing and thawing. New stands of alfalfa continue to look good

Spring plowing is about one-fourth completed across the Commonwealth and overall progress continues to lag behind last year. Farmers were able to make limited progress in seedbed preparation. However, practically no corn has been reported planted to date

Seeding of Pennsylvania seedleaf tobacco seedbeds was winding up last week, past the 80 per cent complete mark, slightly ahead of last year. Early seedbeds reportedly are showing good stands

Potato plantings have been started

Fruit bud development was speeded by several days of warm weather. Peaches were about one-half in full bloom in the extreme southeastern corner of the state during several days of ideal pollinating weather

Orchardists were busy spraying, trimming, and general clean up work

Of the 19 reporting areas only Allentown is showing a rainfall deficiency this early in the season

Latest figures released by the Canada Department of Agriculture indicate that Canadian farmers spent almost \$43.5 million on livestock pest control products, crop and seed treatments and herbicides during 1969



For Interior Farm Buildings

- Does not rub or flake off
- Is really white
- Cleans off windows and stalls easily

Spraying

APPLIED BY
RICHARD R. FORRY

2020 Horseshoe Rd. Ph. 717-397-0035
Lancaster Penna.

ARE HIGH SUPPLEMENT PRICES GETTING YOU DOWN

Switch to Mol-Mix liquid supplements... the money-saving way to insure maximum feed efficiency. Puts low-cost gains on your beef cattle and sheep, gets top production from your dairy herd.

Mol-Mix is a cane molasses-based supplement... a powerhouse of energy, protein, vitamins, and trace minerals... all in liquid form for quicker digestion and use. Mol-Mix is easier to handle, too... saves you trouble, time, and labor costs.

NOW FORTIFIED
with a new combination
of power-packed ingredients.

Distillers Solubles Phosphoric Acid
Condensed Fermented Corn Extractives
Ammonium Polyphosphate

Join the crowd. Join the trend. Join
the growing number of satisfied
Mol-Mix customers.
For more information see us today.

JOHN Z. MARTIN

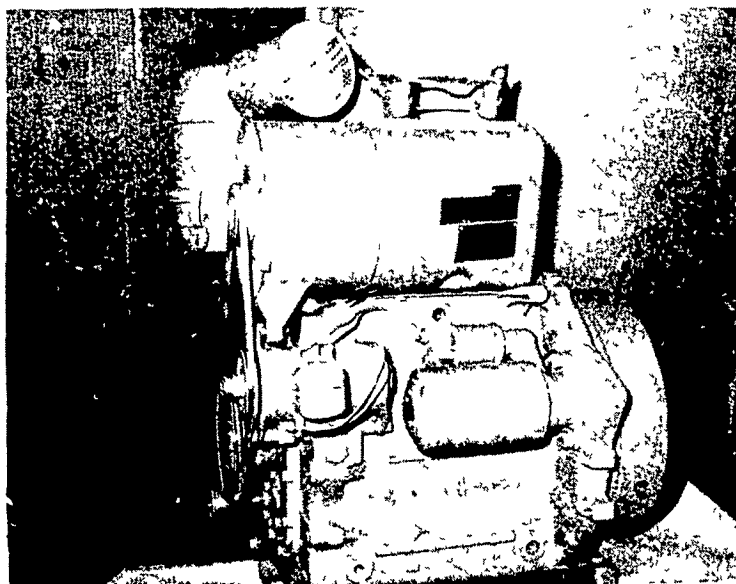
New Holland R#1

Phone 717-354-5848

Mol-Mix
liquid supplements

the
liquid
leader

DEUTZ



F2L-812S

1 Only, Deutz F2L-812S Diesel For Sale w-electric starting, two-cylinder, 20 HP at 1800 RPM 4 mo warranty Price w-stubshaft \$1100.00

1 F1L-812, 10 HP at 1800 RPM Rebuilt, 90 day warranty Price w-stubshaft \$600. — SOLD

SEE THE F2L-912 15-24 HP DEUTZ DIESEL:
It has direct injection and lube oil cooling. This engine has proven to survive the extreme heat of a heavy load in a small engine house better than any other engine. Priced below \$1500.

STAUFFER DIESEL INC.

312 W. Main Street, New Holland, Pa.
Phone 717-354-4181

• MORE MILK • MORE MEAT
• MORE PROFIT
WITH

MADISON SILOS

• Feed high-quality, nutritious, corn and grass silage all year for more milk, more meat and more profit
• Low original cost
• Low upkeep cost
• More than 60,000 Madison Silos in use



Madison Silos

Div. Martin Marietta Corp
1070 Steinmetz Rd
Ephrata, Penna 17522
Ph. 733-1206

LOCAL DEALERS

Frank Snyder
Akron 859-2688

Caleb Wenger
Quarryville 548-2116

Landis Bros Inc
Lancaster 393-3906

Carl L. Shirk
Lebanon 867-3741

Sollenberger Farm Supply
Centerport, Pa.
Ph. 215-926-7671