

Recipe Exchange

Home on the Range

We are delighted with the response to our request for recipes. We are sure you, too, are finding them helpful and useful. Thank you to all of you.

We want to continue sharing recipes with one another. Will you contribute something from your files or many recipe books? Send the recipe, or recipes, of your choice to: Recipes, Lancaster Farming, Box 266, Littitz, Pa. 17543. We will send a postholder to those of you who reply.

xxx

Red Velvet Cake

2 ounces red food coloring
3 tablespoons instant chocolate mix

Mix and set aside.

Cream:

½ cup shortening
1½ cups granulated sugar
2 eggs

Add chocolate mix and beat for 10 minutes.

Add:

1 cup buttermilk
2¼ cups flour
1 teaspoon baking soda
1 tablespoon vinegar
1 teaspoon vanilla
1 teaspoon salt

Put into two 9-inch pans and bake at 350 degrees for 30 to 35 minutes.

Lancaster Farming
Staff Member

xxx

Frozen Fruit Salad

1-8 oz Philadelphia Cream Cheese
1 cup Miracle Whip Mayonnaise
1 cup heavy cream, whipped (use Cool Whip)

1 No. 2 ½ can mixed fruit cocktail (well drained)

½ cup drained maraschino cherries, quartered
2½ cups miniature marshmallows

Soften cream cheese, blend in mayonnaise. Fold in remaining ingredients. Use either cherry juice or red food coloring to color cream cheese mixture. Pour salad mixture into round quart container or loaf pan. Freeze 6 hours. Serves 10 - 12.

"To make more salad I add extra fruit; 1 can pineapple, 1 can mandarin oranges and few extra maraschino cherries."

Mrs. Donald Burkhardt
R.D.1
Strasburg, Pa.

Fruit Salad Cake
Preheat oven to 350 degrees. Grease and flour a flat 8 x 13 cake pan.

1 cup sugar
2 cups flour
1 teaspoon baking powder
2 eggs, slightly beaten
1 No. 303 can fruit cocktail

Mix dry ingredients, stir in eggs and juice from fruit; fold in fruit. Pour into prepared pan and sprinkle with ½ cup brown sugar. Bake 45 minutes, or until brown.

Topping

1 cup sugar
1 small can evaporated milk
1 stick oleo or butter

Combine all ingredients in sauce pan. Bring to boil over medium heat and continue to boil two minutes.

Take cake from oven and pierce full of holes. Pour on topping.

Mrs. James Horton
Masonic Homes
Elizabethtown

xxx

"Here is an old recipe that I would like to share."

Thick Dough Lemon Pie

Filling:

1 egg
2 cups sugar
¾ cup flour
1 lemon, juice and rind
2½ cups hot water

Make a paste of sugar, flour, egg and lemon. Add to water and boil till thick.

Dough:

1 cup sugar
1-3 cup lard
1 cup sour milk
2 teaspoons baking powder
1 teaspoon soda

Flour to make a soft dough

Line 3 pie plates with dough, put filling in, and strips of dough on top.

Mrs. Noah M. Zimmerman
R.D.1
Leola

xxx

Creamed Dried Beef On Toast

¼ lb. dried beef
4 tablespoons butter or margarine
4 tablespoons flour
2½ cups milk, or water
6 slices toast

Shred slices of dried beef into small pieces. Brown margarine in pan and add dried beef. Cook until the edges begin to curl and beef is slightly browned.

Sprinkle flour over beef and allow to brown slightly. Slowly add milk and cook over low heat, stirring constantly. Serve over hot toast. Makes six servings.

Mrs. Elam Hoover
R.D.1
New Holland

xxx

Pumpkin Chiffon Pudding

3 tablespoons cold water
1 tablespoon plain gelatin
1 cup brown sugar
½ teaspoon ginger
½ teaspoon salt
¼ teaspoon allspice
2 teaspoons cinnamon
½ cup milk

1½ cups cooked pumpkin
3 eggs separated
2 tablespoons granulated sugar
Sprinkle gelatin on cold water. Let stand while you cook pumpkin mixture.

Mix brown sugar, spices, salt, pumpkin (mashed), milk and slightly beaten egg yolk. Cook over low flame till thickened,

stirring constantly. Add softened gelatin, stir to dissolve, cool till slightly thickened.

Beat egg white very stiff, add granulated sugar, fold into pumpkin mixture. Pour into dish lined with graham cracker crumbs.

Wilma S. Burkholder
R.D.1
New Holland

xxx

Potato Salad

3 cooked medium-sized potatoes, cubed

8 hard cooked eggs, cubed
1 cup chopped celery
1 small chopped onion

Dressing

1 cup milk
3 egg yolks
1 tablespoon flour

½ cup sugar
1 teaspoon salt
1 teaspoon butter
Cook until slightly thickened, and add:

1-3 cup vinegar
1 tablespoon mustard
Cool slightly and mix together
Miss Anna W. Oberholtzer
R.D.1
Richland

xxx

Chicken Croquettes

2 tablespoons butter
4 tablespoons flour

2 teaspoons salt
¼ teaspoon pepper
1 tablespoon chopped celery
1 cup milk
2 cups chopped chicken
1 or 2 eggs

Melt butter in a saucepan; add flour and blend. Then add milk slowly, stirring until smooth and creamy. Add seasoning and cook a few minutes. Remove from heat, add chicken and mix well. Pour out to cool.

When cold, take large spoonful and shape into patties. Then roll in cracker crumbs, then beaten egg, then in cracker crumbs again. Fry in deep hot shortening.

Miriam M. Oberholtzer
R.D.2
Ephrata

(Continued On Page 23)

GARBER OIL CO.
TEXACO
HEATING OIL
BURNER SALES
AND SERVICE
MOUNT JOY, PA.
Ph. 653-1821



MYER'S METERED GAS
SERVICE, INC.



**PIG BROODERS
CHICK BROODERS**

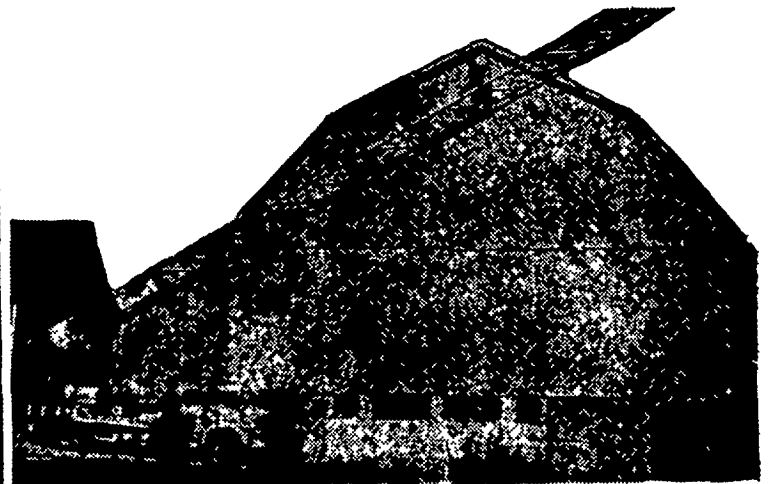
GAS SPACE HEATERS & FURNACES

CHECK OUR PRICE ON
AUTOMATIC BULK DELIVERY OF L.P. GAS

P. O. BOX 71
MANHEIM, PA. 17545
Telephone (717) 665-3588

WE USE

**BRUNING QUALITY PAINT
AND IT DOES STAY ON!!!**



Aerial Ladder Equipment Used
To Paint Your Farm Buildings

- Modern and Efficient Method
- Reasonable Prices
- Over 15 Years Experience
- Spray-on and Brush-in Method Has Proven Satisfactory On Over 1500 Barns Of Our Well Pleased Customers.

CALL MR. MILLER FOR AN ESTIMATE NOW

C. RALPH MILLER

Spray-On and Brush-In Painter

R. D. 4, Manheim, Pa. 17545

Ph. 665-3388

Need . . .

HAY - STRAW - EAR CORN

Buy Now and Save!

More and more farmers are buying from us for better value and all around satisfaction

DELIVERED — ANY QUANTITY

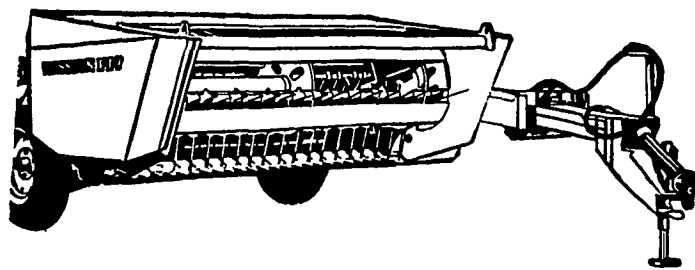
Phone Area Code 717 687-7631

Esbenshade Turkey Farm

PARADISE PA.

H E S T O N

**PT 7 or PT 10
WINDROWERS**



PT 7 — 7 FT. 3 IN. CUT
PT 10 — 9 FT. 3 IN. CUT

MILLER'S REPAIRS

8 Miles East of Lancaster

R. D. 1 Bird-in-Hand, Pa.

Phone 717-656-7926

SUPER SHOES

Self Service
2750 Columbia Ave.
Lancaster
Lanc. Co.'s Largest
Shoe Store
All 1st Quality
Super Low Prices

BAG SEWING MACHINES

by FISCHEIN
Portable and Automatic

S ALES SERVICE SUPPLIES

THE HANLINE CO.

4423 Belgrade St.
Philadelphia, Pa. 19137
215-JE3-3737