

Lancaster County Pomona Grange Adopts Resolutions

Lancaster County Pomona Grange 71 held its spring meeting at White Horse Fire Hall at 8 p.m. April 15. Youth Night was observed with Grange young people filling officers' chairs for opening and closing the meeting.

Jesse Wood, Pomona Master, conducted the business session when three resolutions were adopted. They went on record to ask the Public Utility Commission to prohibit the Philadelphia Electric Company from building an atomic power plant in the southern part of Lancaster County. They asked for a Congressional investigation to see what can be done to improve the U.S. Mail Service, stating that it has deteriorated to a point it sometimes takes six days for a letter to go 20 miles. They also went on record to ask state legislators to enact legislation to permit township supervisors, whose population is less than 300 per square mile, to operate a township dump under much less stringent rules and regulations than are now mandated. They said many dumps are being closed as a result of the regulations and residents will probably resort to disposing of trash in open piles in gutters, vacant lots and roadsides.

District E Pomona visitation meeting will be held at 8 p.m. Saturday April 22, at Honey Brook Township Grange Hall in Chester County. The Grange Hall is located on Route 10, south of Honey Brook. Lancaster County Pomona Grange will be host, Chester-Delaware will provide officers and the program will be presented by Granges in Montgomery and Lower Bucks counties.

Young people from Lancaster County Granges are attending District H Youth Conference in Lehigh County today, April 22 from 1 to 7 p.m.

The following visitation schedule has been planned for Lancaster County Granges May 16—Colerain Grange host at Quarryville Fire Hall, Fulton program and Salisbury officers

fill chairs; June 26—Fulton host at Grange Hall, Oakryn, Salisbury program and Colerain officers; July 11—Salisbury host at White Horse Fire Hall, Colerain program and Fulton officers. The theme of these meetings is "Ecology" and a tree, shrub or seedling will be presented to the host Granges by the Grange whose officers fill the chairs.

Pomona Lecturer Mrs. Jesse Wood, a member of the Pomona Women's Activities committee and a member of the Youth committee, will attend the Pennsylvania State Grange Leadership School at Gettysburg College June 27, 28 and 29.

Mrs. Jesse Wood presented the program and read "Youth Eternal." Mrs. J. Stanley Stauffer Jr read "Just Like His Dad." Mr. and Mrs. Henry Huber, West Chester, chairmen of the Pennsylvania State Grange

Young Married Couples committee and the reigning State Grange Young Married Couple of the Year, spoke about young married activities and showed colored slides of the 1971 State Grange Young Married Couples weekend conference held at Edgewater Acres, Alexandria, Pa. They also showed slides taken at the 105th annual session of the National Grange convention in Charleston, W. Va.

Remarks were given by Mr. and Mrs. William Sheppard and Mr. and Mrs. Robert Chambers of Chester County and by Samuel McQuillan of Delaware County.

Mr. and Mrs. Richard Holloway will serve on the visitation committee for Pomona Grange and report at the next meeting.

Colerain Grange will host the Pomona Grange picnic which will be held at 7 p.m. August 19 at Holtwood Park.



First place winner in the Lancaster County Soil and Water Conservation District annual 4-H conservation exhibit last week at the Farm and Home Center was Al Lutz, 1973 Millport Road, Lancaster. His display featured a farm model.

Pontz Named as Production Administrator

Frederick D. Pontz III, 26 Farmersville Road, Leola, has been named to the position of production planning administrator at Victor F. Weaver, Inc., New Holland.

Pontz, a graduate of the Babson Institute of Business Administration joined Weaver in 1968 as production scheduling supervisor. In 1971 he was named to the position of production planning supervisor.

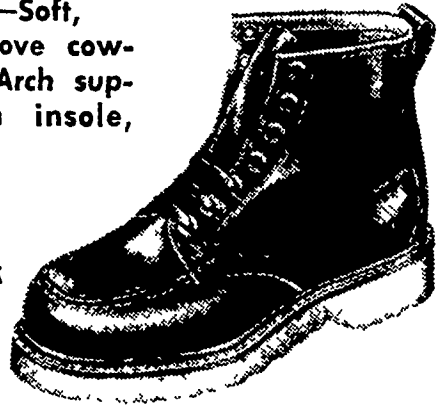
He is a member of the

American Production Inventory Control Society (APICS) and the Lancaster Society for the Advancement of Management (SAM) from which he was recently presented the 1971 Chapter Achievement Award.

Under his new duties as production planning administrator, Pontz will assume the administrative responsibility for the operation of broiler Growers, Inc. and Denver Wood Products, Inc.

RUGGED WORK SHOES

6" Work Shoes—Soft, comfortable glove cowhide leather. Arch support, cushion insole, Goodyear welt.



SIZES: 6 1/2 to 13
Also Complete Stock
of Steel Toe Shoes

WORK SHOES
PRICED FROM
\$8.98

**BRING THIS AD TO STORE AND
SAVE \$2.00 OFF REGULAR PRICE**

Spring Special Men's Lee Riders
Reg. \$6.99 Special **\$5.00** pair

Park Ave. Shoe Store

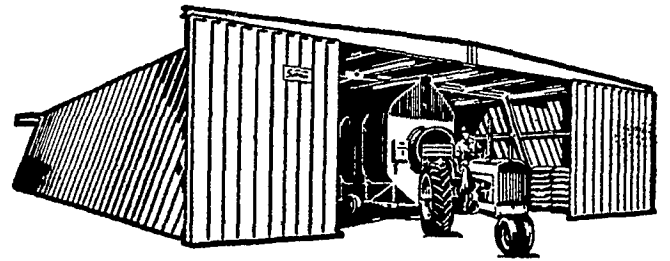
PARK AVE. & SHIPPEN ST. OPEN EVENINGS

SHOE SHAK

ROHRERSTOWN OPEN EVENING FREE PARKING

new from **BEHLEN**

the economy
Spartan



Brawny Building, Puny Price

High strength steel - heavy gauge wall panel - choice of two beautiful, durable colors or galvanized steel . . . in 40' or 48' widths. Big 13' x 20' or 13' x 24' doors. Choose from a wide selection of accessories.

The new Behlen Spartan brings you clear-span economy in a modern farm building . . . without sacrificing quality.

Let us show you how you can own a **BEHLEN** quality building for less than you ever thought possible.

SEE:

FREY BROS.

Fred Frey, Mgr.

R. D. #2, Quarryville, Penna. 17566 Ph. 717-786-2235

See the **NEW JOHN DEERE ELECTRIC RIDER**



your friendly neighborhood sound barrier

The new Electric 90 Riding Mower is so quiet you can cut your grass anytime from sunrise to sunset without disturbing your neighbors. Cuts an acre of grass on a charge and full battery power can be replaced overnight. The Electric 90 requires very little maintenance. See it at our store.

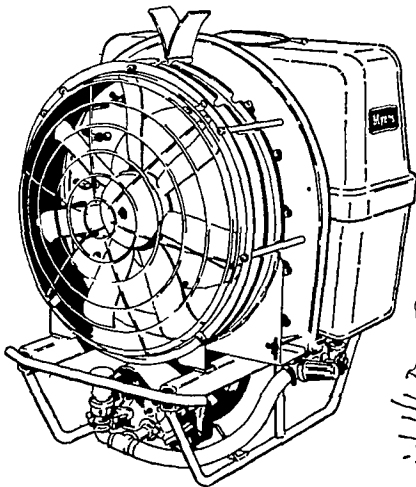


LANDIS BROS., INC.

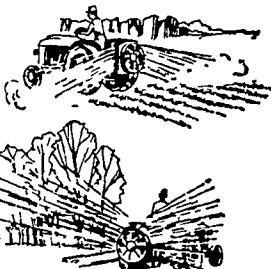
Ph: 393-3906
1305 Manheim Pike
Lancaster, Pa. 17601

Myers' A32TM

**ORCHARDS • ROW CROPS
TURF • VINEYARDS**



...with
Lightweight,
Rust Free
Molded Tank



- Compact, 3 point Hitch PTO Air Sprayer
- Multi-purpose chemical applicator for Parks, Golf Courses, General Farming, Orchards and Vineyards
- Multi-use Design Cuts Cost in Half
- Big Piston Pump offers Full Range from 20 to 500 P.S.I. and 12 GPM

LESTER A. SINGER

ROCKS, PA

Phone 687-6712

Lancaster County's Only
Dealer Specializing in
Sprayer Sales & Service