

Agricultural Trade Talks

Held by U. S. and USSR

Secretary of Agriculture Earl L. Butz announced that a U.S. delegation arrived in the Soviet Union April 8 to discuss additional sales of U.S. grain and feedstuffs to that country. The talks started on April 10.

Secretary Butz stated that assistant Secretary of Agriculture Clarence D. Palmby headed the U.S. team which met with officials of the Soviet Ministry of Foreign Trade in Moscow. Secretary Butz, who

As the national furor over beef prices reached its crescendo, Pennsylvania farmers were

visited the Soviet Union from April 8 to April 12 at the invitation of Soviet Minister of Agriculture V. V. Matskevich, was also present to open these talks.

The Soviet invitation for the discussions was extended by the Ministry of Foreign Trade and follows the sale last November of a large quantity of U.S. feed grains to the Soviet Union—the first major grain sale to that country in eight years. The Soviet purchase was one of several indications that the USSR is launching a major effort to expand output of livestock and poultry products.

The Secretary's party consisted of: Secretary Butz; Donald E. Brock, administrative assistant to the Secretary; Claude W. Gifford, director of information; Horace J. David, assistant administrator, Foreign Agricultural Service. The U.S. team included: Clarence D. Palmby, assistant Secretary; Claude T. Coffman, deputy general counsel; Clifford G. Pulvermacher, general sales manager, Export Marketing Service; Donald J. Novotny, deputy director, Grain and Feed Division, FAS; Stanley Brown, agricultural attache designate, Moscow; Jean R. Tartter, deputy director, Office of East-West Trade, Department of State.

Penna. Red Meat Prices

already getting less for their red meat production in March, according to the Pennsylvania Crop Reporting Service

year earlier Live hogs were bringing \$24.20 per hundredweight, down \$2.10 but still \$6.70 higher than a year ago

The prices received by steer and heifer feeders in the Commonwealth was down \$2.60 per hundredweight in a comparison of March 15, 1972 and a month earlier prices. At \$31.00 per hundredweight steers and heifers were bringing a scant 1.4c per pound, live weight, more than a year earlier

Helping to drive the prices down was increased production 32,700,000 pounds of beef was marketed in February, four per cent more than a year ago. Pork, at 45,725,000 pounds, was up 13 per cent and the 465,000 pounds of lamb and mutton was a 25 per cent jump

Pork prices were down even sharper over the preceding month but still well ahead of a

Only veal production was off in the report of red meat production. The 1,847,000 pounds represented a drop of 18 per cent

We Specialize in Liquidation Sales of All Kinds Farm Machinery, Construction Equipment and Land

FARM MACHINERY AUCTION SALE

Tractors and Farm Machinery

Exit 10 or 11 off Interstate 83 Emigsville, Pa.

APRIL 21, 1972

at 10 o'clock A. M.

SALE RAIN OR SHINE

York Co. Farm & Ind. Equip. Co. Inc.

4 Miles North of York, Pa. on Route 181
Box 222 Emigsville, Pa. 17318
Phone: 717-764-6412

If you have machinery not suitable for your trade, bring it to our sale and turn it into ready cash. If you need machinery of any kind you will find it here at our sale.

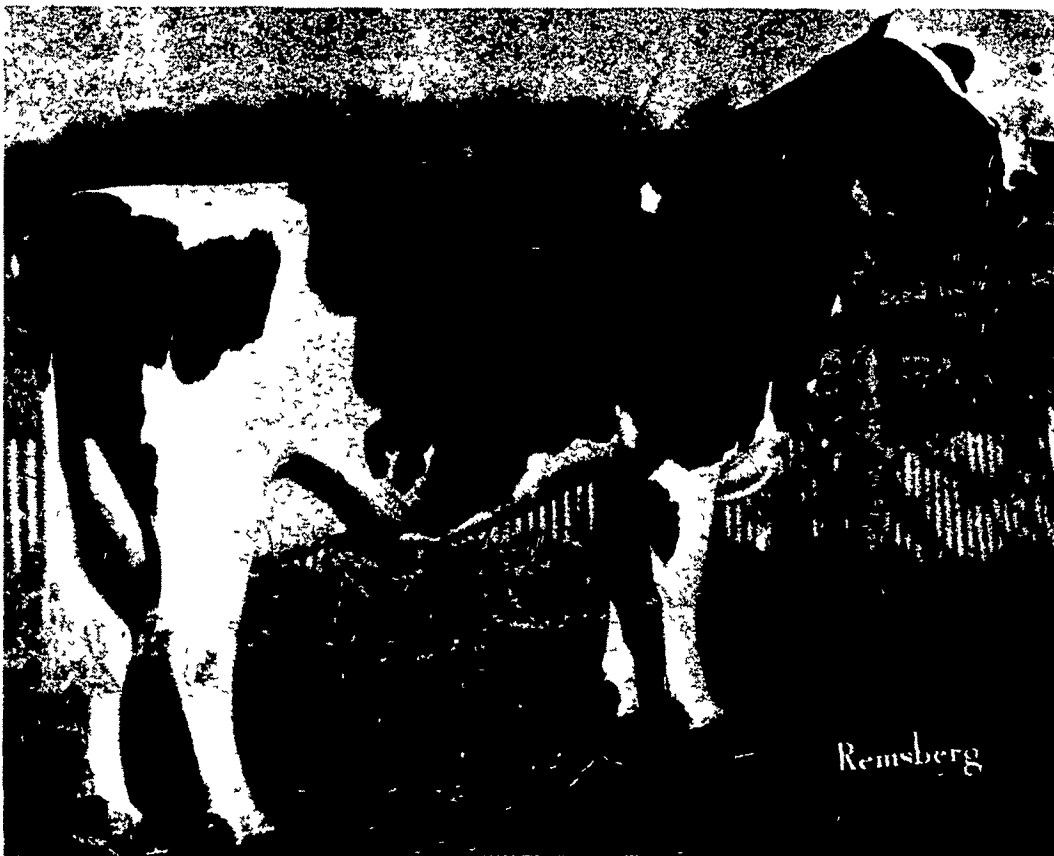
We Welcome You as a Buyer, Seller or Visitor.

YOURS AT SIRE POWER - THREE GREAT SONS OF TIDY BURKE ELEVATION

Their January 1972 USDA Summary

SIRE	Rpty.	P.D.M.	P.D.F.	P.D.S.
1. Tidy Burke TRANSMITTER, GM 2-71	50 per cent	+1726	+52	+91
2. Round Oak Rag Apple ELEVATOR, GM 5-71	89 per cent	+1294	+45	+71
3. Fair Hill ELEVATOR	52 per cent	+ 884	+12	+35

AN ELEVATOR DAUGHTER



CLAY BOTTOM ELEVATOR SUPER GP

2-3 305 13570 494

Yes, these 3 great Tidy Burke Elevation sons are yours at SIRE POWER and are available through your NEBA technician. ELEVATOR, the latest to earn a proof, has a good chance of also earning his GM rating following the current classification of Maryland area Holstein herds. To obtain service to these sires (do-it yourself herds included) call either of the numbers listed below.

PROVIDING SIRE POWER SERVICE



R.D.2, Tunkhannock, Pa.

FOR SERVICE IN

LANCASTER COUNTY, CALL

Nelson Kreider Strasburg 717-687-6214

Marlin Kover Ephrata 717-733-1224

Add SIRE POWER to your herd

Call your NEBA technician today!

All Day Public Sale DAIRY CATTLE, FARM EQUIPMENT & ANTIQUES SATURDAY, APRIL 29, 1972 9:00 A.M. SHARP

4 Miles South of Willow Street, Pa. Take Rt. #272 South to Byerland Church Road. Continue West 2 Miles, Watch for Arrows, along Rawlinsville Rd., Lancaster Co., Pa.

HOLSTEIN DAIRY CATTLE:



34 Milking age, 7 Bred heifers due in fall,

1 young Bull, included are 5 Guernseys and 2 Red & White Holsteins, 1/2 the herd due to calve Summer through fall, several fresh recently. Plant Test over 4.0%, good working herd.

Farm Equipment including: Int. 504 Tractor with power steering and front end wts.; Int. 340 Tractor with power steering and cultivators; #530 (3) Bottom 14" plow; #211 (2) Bottom 14" plow; Farmall "M" Tractor (all are gas).

N.H. #273 Baler w/Thrower (1 season); Int. #14 Rake; 30 ft. Farmec Elevator; #100 Int. Balanced Mower; Int. #816 Mower Conditioner; N.H. Flail Chopper; N.I. #323 1-Row Picker (2 seasons). Mc Curdy Corn drag; #260 Int. Planter; Starline #710 Starline Tank Spreader; N.I. 12-A Spreader; Cunningham Crimper; Grove Wagon w/high sides; Case wagon w/high sides; McCurdy Bin wagon, J.D. "KBA" Transport disc; J.D. Lime Fert. drill; Century Sprayer; Brillion 9 ft. Cultipacker; Case disc drill, M.H. 6 ft. Combine w/Wisconsin engine; Dual wheel Trailer; Set double Ladders; (4) Single T. Ladders, Hoers; Minnich Press; 2-Row Transplanter, Papec Hammermill; Cannon Sheller; (2) dirt Scoops; Walking plows; Peg harrow; 6,000 Lath; Extension Ladder; Mineral feeder; (2) feed carts; Wheel Barrows; drill press; approx. 35 Tons Ear Corn; 12 tons of hay; 10 Tons Straw; 200 Bu. Barley; Lot of Silage in Trench; 9 Nice Shoats.

DeLaval (2) Units (Late type); 4 s.s. pails; S.S. Strainers; S.S. Wash tubs; No. 74 Pump.

Lots of small tools, "everything and anything used around a farm."

ANTIQUES: Old Springfield Rifle; 1-horse 2-wheel dump cart; Spring Wagon Seat; old corn sheller; McD. gas engine; old milk cans; Copper Kettle; (2) Iron Kettles; Wood Box; Blanket Chests; Old Bed; Spinning Wheel; Claw-footed Table; wooden water pump; dry sink; Meat Benches; Numerous other items as time did not allow much searching.

ORDER OF SALE

Small tools sold first, Antiques, Equipment; Cattle. "No Sale on this farm for over 65 years."

Lunch Available

Sale at 9:00 a.m. Sharp
by John and Robert Hess
Phone: 464-3582 or 284-4716

Aucts. Carl Diller & J. Everett Kreider