

Grange Sewing Contest Finals Approaching

The Fulton Grange local sewing contest will be held April 24. The top of the County winners will be eligible for competition in the State contest.

Mrs. Rebecca Quinn, Peach Bottom RD1, is chairman of the women's activities committee of Fulton Grange.

Deadline for the State contest is April 30. Grange women of Pennsylvania are stepping up enrollment in the statewide sewing competition, which has set a goal of a record 1,300 contestants.

Last year 1,122 women participated in the event, a record up to that time.

Contestants may make any type dress or suit, including pants outfits, in one or more of three different classes. Contestants must be 12 years of age or older and members of the Grange or

non-members with Grange sponsorship.

Pennsylvania champions will compete with winners from 37 other Grange states to determine a National winner.

A. Wayne Readinger, State Grange master, said the sewing project has been the fastest growing contest for the distaff side of the Patrons of Husbandry. Home sewing, he added, has developed into a billion dollar industry in the nation, and that Pennsylvania women account for at least one-tenth of that volume.

Mrs. Ross Metz, Allensville, state chairman of women's activities and director of the contest, said women sew not only from a standpoint of thrift, but also because they find pleasure and satisfaction in making apparel for their own use.

Feed-Grain Program Report

A new record number of farms have signed up to participate in the 1972 feed grain program and they have a new record base acreage included, according to a preliminary final enrollment progress report issued by the U. S. Department of Agriculture.

The number of farms enrolled totals 1,764,551 as compared to the previous record final report of 1,759,315 signed up for 1971. The record feed grain base represented on signed farms totals 107.4 million acres, 14 per cent larger than the previous record of 94 million acres set in 1969. With this base acreage on participating farms, feed grain crop production potential in 1972 should remain within bounds and a reduction in carryover may be achieved, USDA officials indicated. All voluntary additional set-aside acreage offered by producers under two options will be accepted, USDA announced.

The set aside acreage offered for the 1972 program totals 37 million acres, the largest ever except for the record 39.5 million acres of diversion signed up for the 1970 program.

Of the total feed grain base of 107,352,304 acres on enrolled farms this year, 72,344,537 acres are corn base, 21,129,301 acres represent grain sorghum base, and 13,878,466 acres are barley base. The corn base exceeds the record final total of 72,043,493 acres set in 1971; that for barley compares with 1969 record final total of 13,176,056 acres; and the 1972 sorghum base compares with the 1971 record total of 21,342,356 acres. Barley was not included in the 1972 program. feed grain base acreage of farms listed on registers, but whose enrollment was not completed in time for preliminary final report, totals about 608 thousand acres, of which corn represents 394 thousand acres; sorghum 54

thousand, and barley 160 thousand.

The 37,024,684-acre set-aside listed in this report has required 25 per cent totalling 26,787,529 acres. It also includes up to 10 per cent voluntary additional under two separate options ("A" and "B") for corn-sorghum base acreage and up to 20 per cent for barley to make a group total of 7,273,060 acres, plus 2,964,095 acres of corn-sorghum.

corn-sorghum plantings below 1971 corn-sorghum acreage by twice the amount of voluntary additional set-aside. Additional set-aside offered under Option "A" totals 6.9 million acres. That offered under Option "B" totals 3.3 million acres and will assure a reduction in 1972 corn-sorghum acreage of at least double that amount.

xxx

To give cakes the delicious flavor of butter inside and out, use butter in the recipe, of course, but also butter the cake pans before dusting them with flour. Even the crust will be butter flavored.

Of the two options for additional set-aside available, Option "B", announced February 2, provides a higher payment rate than the original option but requires producers to reduce 1972

Start raising more and better Calves the Easy NURS-ETTE way

No more carrying pails of warm water or hand mixing milk replacer. Just fill the hopper of the NURS-ETTE with milk replacer and the NURS-ETTE will mix milk replacer and warm water and keep it warm until calf nurses the mix (approx. 14 oz.)

Then it will mix a fresh batch of water and replacer.

YOUNG BROS.

NURS-ETTE SALES AND SERVICE

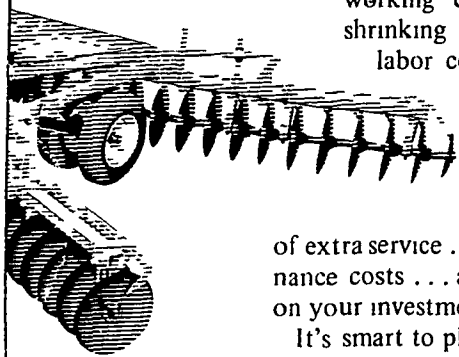
Ph. 717-548-2462

Peach Bottom, R.D. 1, Pa. 17563

TILLAGE TOOLS TO HELP YOU GROW

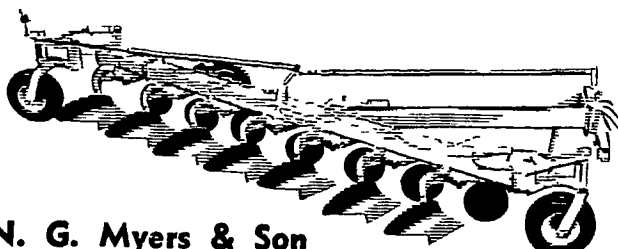
IT makes good sense to choose equipment that will take care of your growing needs for years to come like Allis-Chalmers plows and disc-harrows.

These fast, rugged performers expand your soil-working capacity, while shrinking your fuel and labor costs. Their clean design and tough construction mean year after dependable year



of extra service . . . lower maintenance costs . . . and more return on your investment.

It's smart to plan ahead for expansion and changes in your crop growing operation. And when you do, make your farming future bright . . . with the bright Orange performance of Allis-Chalmers tillage tools.



N. G. Myers & Son
Rheems, Pa.

L. H. Brubaker
Lancaster, Pa.

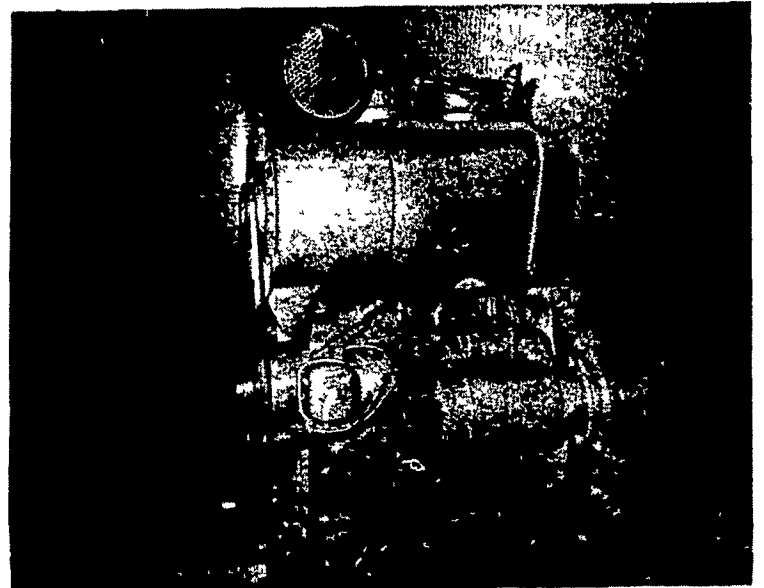
Roy H. Buch, Inc.
Ephrata, R.D. 2

Nissley Farm Service
Washington Boro, Pa.

Grumelli Farm Service
Quarryville, Pa.



DEUTZ



F2L-812S

1 Only, Deutz F2L-812S Diesel For Sale w-electric starting, two-cylinder, 20 HP at 1800 RPM. 4 mo. warranty. Price w-stubshaft \$1100.00

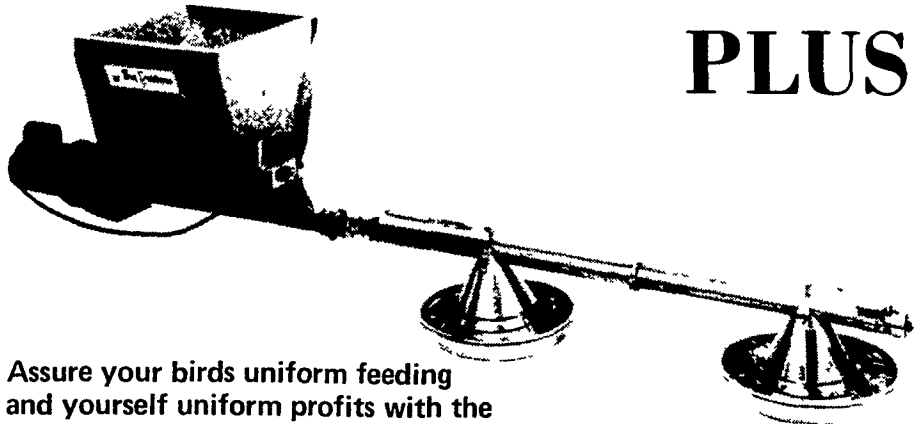
1 F1L-812, 10 HP at 1800 RPM. Rebuilt, 90 day warranty. Price w-stubshaft \$600.

SEE THE F2L-912 15-24 HP DEUTZ DIESEL: It has direct injection and lube oil cooling. This engine has proven to survive the extreme heat of a heavy load in a small engine house better than any other engine. Priced below \$1500.

STAUFFER DIESEL INC.

312 W. Main Street, New Holland, Pa.
Phone 717-354-4181

PAN FEEDING WITH A PROFITABLE PLUS



Assure your birds uniform feeding and yourself uniform profits with the economical dependable Big Dutchman Auger-Matic Pan Feeding system. The deep pan design and contoured pan bottom keep feed down at the pan bottom, reducing spillage and billing out of feed. The 15" pan features more feeding space than other pan systems. A Positive Feed Control pan at the end of this system activates the feed delivery system when the control feeder is low. Big Dutchman's Auger Matic system incorporates many superior design features to assure economical, dependable performance. For more information on this economical, outstanding Big Dutchman Auger-Matic Pan Feeding system, contact us today!

Big Dutchman

A Division of U.S. Industries, Inc.
EASTERN BRANCH



215 Diller Ave., New Holland, Pa. 17557

Ph. 354-5168