

Hog Prices

Lancaster Market

Monday, April 10

Barrows and Gilts strong to 25 higher.

Barrows and Gilts: US 1 200-235 lbs. 24.50-24.75; US 1-2 200-240 lbs. 24.00-24.25; US 2-3 195-255 lbs. 23.25-23.75; US 3-4 250-280 lbs. 22.00-23.00.

Lancaster Auction

Wednesday, April 12

Barrows and Gilts 50 higher. Barrows and Gilts: US 1 215-230 lbs. 25.25; US 2-3 200-260 lbs. 23.75-24.25.

New Holland Auction

Monday, April 10

Hogs 1117: Barrows & Gilts: 50c to 75c lower. US No. 1-2 200-230 lbs. 24.00-25.00; US No. 1-3 200-230 lbs. 23.25-23.75; US No. 2-4 230-260 lbs. 23.00-23.50; US No. 2-4 170-200 lbs. 22.00-23.00.

Sows: US No. 1-3 300-550 lbs. 19.00-21.00

Boars: 19.00-20.00.

Lebanon Valley Livestock Market, Inc.

1 mile east of Fredericksburg along Route 222

Phone Jonestown 865-2881

Sale every Tuesday at 1:30 P.M. starting with feeder cattle and pigs

Lebanon Valley Auction

Tuesday, April 11
288 Head of Hogs

Barrows and Gilts 25c to 50c higher.

Barrows and Gilts: Few lots U.S. 1-2 210-230 pounds 23.85-24.25; 2-3 200-250 23.35-23.75, 2-4 195-270 22.85-23.55.

Sows: 19.10-19.85.

Boars: (few) 16.00-19.25.

28 Head of Feeder Pigs

Couple lots U.S. 1-3 25 pound 13.25-13.50; one lot 1-3 70 pounds 20.25.

Vintage Auction

Saturday, April 8

Hogs 954: Barrows & Gilts: 50c to 75c lower. US No. 1-2 205-240 lbs. 24.00-24.60 (lot 25.25); US No. 1-3 195-245 lbs. 23.50-23.85; US No. 2-4 240-260 lbs. 23.00-23.50; US No. 2-4 150-190 lbs. 22.50-22.85.

Sows: US No. 1-3 300-625 lbs. 18.00-20.00.

Boars: 19.25-19.50.

Tuesday, April 11

Barrows and Gilts 25, instances 50 higher.

Barrows and Gilts: US 1 200-235 lbs. 24.25-24.60; US 1-2 200-235 lbs. 23.85-24.25; US 2-3 195-245 lbs. 23.50-24.00; US 3-4 235-265 lbs. 22.75-23.35.

St. Louis Auction

Hogs: 6000. Fully 25 lower. US 1-2 200-230 lbs. 23.50-23.75; 110 head No. 1 210-220 lbs. 24.00; 1-3 200-240 lbs. 23.00-23.50.

U. S. Inspected Livestock Slaughter

Estimated Daily Livestock Slaughter Under Federal Inspection

	CATTLE	HOGS	SHEEP
Thurs., April 13	118,000	354,000	41,000
Week ago	117,000	328,000	42,000
Year ago	116,000	359,000	43,000
Week to date	482,000	1,373,000	159,000
Same period last week	444,000	1,277,000	166,000
Same period last year	438,000	1,341,000	166,000

Peoria Auction

Hogs: 4500. Fairly active, opening 25-50 lower. US 1-2 200-230 lbs. 23.25-23.75; 30 head 24.00; 1-3 200-250 lbs. 22.50-23.25.

Indianapolis Auction

Hogs: 3000. weak to mostly 25 lower, rather slow US 1-2 200-235 lbs. 23.50-23.75; 1-3 200-240 lbs. 23.00-23.50; 240-260 lbs. 22.50-23.00.

Omaha Cattle

Thursday, April 13

Compared with last week's close, closing prices on slaughter steers weak to 25c lower. Heifers steady to weak, instances 25c lower. Cows 25-50c lower. Bulls fully steady. Small feeder supply steady.

Four day receipts 18,900 as compared 16,600 previous week and 20,000 a year ago Slaughter steers approximately 46 per cent, heifers 37 per cent, the general finish attractive with liberal percentage Choice and moderate volume High-Choice and Prime. Cows 8 per cent, feeders 6 per cent. Fed cattle prices edged cautiously upward on the week's opening session as a carryover effect of higher carcass prices the previous week but the early upturn on steers was more than lost later. Even in the early in the early trade, there was an ap-

Futures Trading

(Closing bids as of Thursday, April 13)

	Chicago Cattle	Chicago Hogs	New York Maine Potatoes	Chicago Fresh Eggs
April	35 20	24.90		25 80
May			3 07	27 35
June	34 35	27.80		30 40
July		28 10		34 50
August	33 80	27 67		
September				39 35
October	32 90	26 25		
November			2 72	
December	32 70	26 65		40 80
February '73	32 85	26 47		
April	32 77			
May '73			3.76	

Trend - Cattle are stronger, Hogs and stronger, Potatoes are weaker, and Eggs are stronger

a-asked b-bid n-normal

Markets provided by Commodity Dept., Reynolds Securities, Inc.

parent lack of optimism as buyers followed a cautious pattern Over the past several weeks, the average weight of steers has increased some 39 pounds from the 1117 pound average of the week ended March 2nd.

Average cost slaughter steers first three days 34.17 average weight 1156 pounds as compared 33.85 and 1148 pounds previous week and 32.34 and 1137 pounds a year ago. Part of the increase in average weight is a reflection of the volume 950-1050 pound fleshy two-way steers which have returned for further finish on feeder account.

Market Steers

Steers: Six loads High Choice and Prime 3-4 early, 1157-1286 pounds 35.40-35.50; late 1075-1280 34.75-35.25, Choice 2-4 975-1325 33.75-34.75; bulk 34.00-34.50; Mixed Good and Choice 950-1225 33.25-34.00; Good 31.50-33.25; Standard and Low-Good 30.00-31.50.

Heifers: 14 loads High-Choice

and Prime 950-1225 pounds 34 35-34 50, 873-1056 34 10-34 25, Choice 2-4 825-1050 33 00-34 00, Mixed Good and Choice 750-975 32 25-33 00, Standard and Low-Good 28 50-32 25

Cows Utility and Commercial 23.00-25.50, Canner and Cutter 20.50-23.50, Mixed Cutter and Utility 23 75-24 00.

Bulls: Utility, Commercial and Good 26.50-29.50, Commercial 30.00-31.50, Cutter and Low-Utility 23 50-26 50

Feeder Steers

Small supply fully steady, mainly High-Good and Choice two-way steers Outshipments of 1,200 as compared with 800 previous week

Steers. Choice 542-754 pounds 37 50-39 00; 688-874 36 00-36 50, High-Good and Choice 900-1157 33 00-34 00, Good 850-1050 32.00-33.00

Heifers Part load Choice 499 pounds 36 00, Good and Choice 793-922 31 00-33 00; Good and Choice 577 pounds 33.65

Certainly Lasso® plus atrazine controls fall panicum.

Plenty of growers last season learned that the "foxtail" they thought grew through their herbicide was really fall panicum.

And plenty of growers this season will learn that if you tank mix Lasso plus atrazine, you won't find fall panicum. Nor will you find giant foxtail, crabgrass and most other grasses...or lots of broadleaves like smartweed, pigweed, cocklebur.

Lasso plus atrazine gets 'em all in corn.



That's what you expect from your herbicide.

P. L. ROHRER & BRO., INC.

Smoketown, Pa.

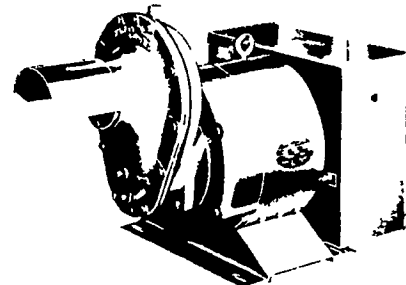
Ph. 397-3539



WORLD'S LARGEST MFG. OF TRACTOR DRIVEN ALTERNATORS

TRACTOR DRIVEN ALTERNATORS

PTO Units Available From 7 KW to 60 KW 20 Year Warranty



POWER WHEN YOU NEED IT MOST

1800 RPM

INSURE YOUR FARM OPERATIONS AGAINST POWER OUTAGES HAVE EXPERIENCED PEOPLE INSTALL & SERVICE.

INSIST on a FREE WINPOWER DEMONSTRATION

at YOUR Farm Before You Buy ANY Tractor Driven Alternator

CALL NOW

L. J. EDWARDS
FARM SALES, Manager



ELECTROMECH

ELECTROMECHANICAL SERVICE

ROUTE 222, EPHRATA, PA. 17522

PHONE (717) 733-7911

LP-NATURAL GAS GASOLINE DIESEL ENGINE GEN SETS TO 200,000 WATTS

ELECTRIC MOTOR • GENERATOR • POWER TOOL SPECIALISTS