

Hog Prices

Lancaster Market

Monday, April 3
Barrows and Gilts steady to strong.
Barrows and Gilts: US 1 200-240 lbs. 25.25-25.50; US 1-2 200-240 lbs. 24.50-24.75; US 2-3 195-255 lbs. 24.00-24.25; few 24.50.

Lancaster Auction

Wednesday, April 5
Barrows and Gilts 1.00-1.50 lower.

Barrows and Gilts: US 1 205-230 lbs. 24.50; US 1-3 205-250 lbs. 23.00-23.50; 85 head US 3-4 265-280 lbs. 22.00-22.35; 35 head US 3-4 335 lbs. 19.00.

New Holland Auction

Monday, April 3
Hogs 800: Barrows & Gilts: Steady to 25c lower. US No. 1-2 210-230 lbs. 24.50-25.00; US No. 1-3 200-230 lbs. 24.00-24.35; US No. 2-4 180-200 lbs. 22.00-24.00; US No. 2-4 200-240 lbs. 23.75-24.00.

Sows: US No. 1-3 300-500 lbs. 20.00-22.00.
Boars: 19.50-20.50.

Lebanon Valley Auction

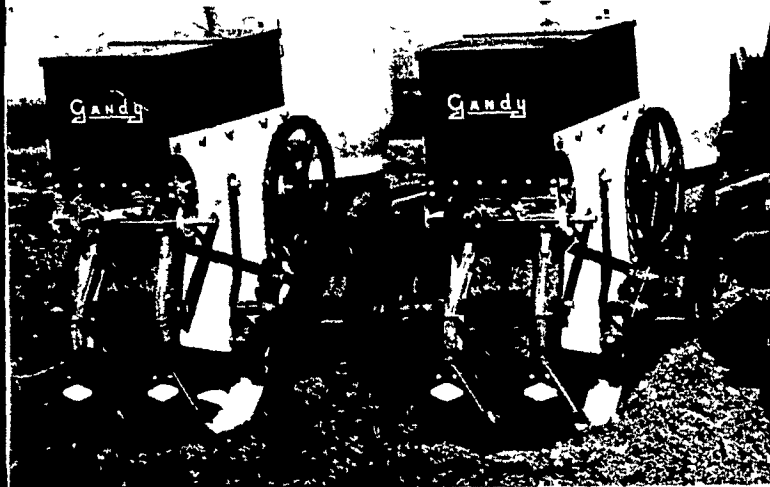
Tuesday, April 4
330 Head of Hogs
Barrows and Gilts 50c lower.
Barrows and Gilts: One lot U.S. 1-2 235 pounds 23.75; 2-3 195-250 23.00-23.35; few lots 2-4 185-225 22.50-22.85; one lot 3-4 290 pounds 21.00.
Sows: U.S. 2-3 400-600 pounds 19.00-19.50.
Boars: 18.00-19.25.

U. S. Inspected Livestock Slaughter

	CATTLE	HOGS	SHEEP
Thursday, April 6	112,000	340,000	41,000
Week ago	117,000	347,000	43,000
Year ago	120,000	368,000	47,000
Week to date	434,000	1,276,000	167,000
Same period last week	463,000	1,394,000	174,000
Same period last year	466,000	1,455,000	183,000

Estimated daily livestock slaughter under Federal Inspection.

GANDY GRANULAR CHEMICAL APPLICATOR



FITS POPULAR PLANTERS

Protects corn, beans and many other crops from weeds and insects. Only GANDY guarantees accuracy in writing. Easy to assemble and disassemble. Very versatile, will apply 7" - 10" or 14" band or sidedress when cultivating. Will even put underground with fertilizer.

Whatever you need, GANDY can do it.

YES!

We have universal models to mount on older 2 and 4 row planters.

FOR INFORMATION CALL OR WRITE US.

LESTER A. SINGER

Ronks, Pa.
717-687-6712

SHENK'S FARM SERVICE

Lititz RD4
717-626-4355

Vintage Auction

Saturday, April 1
Hogs 788: Barrows & Gilts: Mostly steady. US No. 1-2 210-240 lbs. 24.85-25.25; US No. 1-3 200-245 lbs. 24.35-24.75; US No. 2-4 185-255 lbs. 23.50-24.25; US No. 2-4 110-185 lbs. 21.00-23.50.
Sows: US No. 1-3 300-500 lbs. 18.25-20.75.
Boars: 18.50-19.50.

Tuesday, April 4
Barrows and Gilts steady.
Barrows and Gilts: US 1-2 200-240 lbs. 23.85-24.10; US 1-3 195-250 lbs. 23.25-23.75.

Peoria Auction

Hogs: 3500. Active, opening mostly 50 higher US 1-2 200-230 lbs. 23.25-23.75; 40 head 24.00; 1-3 200-250 lbs. 22.75-23.25.

Indianapolis Auction

Hogs: 2000. unevenly 25-75 higher, mostly 50 higher, moderately active. US 1-2 220-235 lbs. 23.50-23.75; 1-3 200-250 lbs. 23.00-23.50; 2-3 240-270 lbs. 22.50-23.00.

St. Louis Auction

Hogs: 5500. 50-75 higher US 1-2 200-230 lbs. 23.50-23.75; 85 head 1-3 200-240 lbs. 23.00-23.50.

The barbecue season will soon be here. If steak is your favorite barbecue fare, vary the flavor by rubbing the meat with garlic before broiling then brushing with butter occasionally while the meat cooks over the hot coals. Or top that steak with fresh sliced mushrooms and green onions that have been sauteed in butter.

Omaha Cattle

Thursday, April 6
Compared with last weeks close slaughter steers 25-50c lower than previous midweek. Heifers mostly 50c lower, cows 50c lower. Bulls steady. Feeder cattle weak to 50c lower, the decline on fleshy steers and heifers in sympathy with declining slaughter prices.

Four day receipts 16,600 as compared 16,700 previous week and 18,500 a year ago. Slaughter steers approximately 45 per cent, with moderate volume Standard and Good Holsteins included, heifers 35 per cent, cows 12 per cent, feeders 5 per cent. The residual effects of substantially lower carcass trade late the previous week were sufficient to force live prices sharply downward on the weeks opening session despite a modest supply. Only slight recovery was made on late sessions as buyers sought to establish an acceptable ratio between carcass realizations and live costs in the face of an unresponsive carcass trade. Most interests were competitive only for sufficient numbers to meet minimum slaughter quotas in somewhat of a hand-to-mouth operation.

Average cost slaughter steers this week for three days 33.87 average weight 1148 pounds as compared 34.47 and 1141 pounds previous week and 32.23 and 1143 pounds a year ago.

Market Steers

Steers: Five loads High-Choice and Prime U.S. 3-4 1162-1310 pounds 35.15 - 35.35; 1072 - 1302 34.75 - 35.00; Choice 2-4 975 - 1300 33.75 - 34.75; 1369 pounds 34.00; Mixed Good and Choice 950 - 1250 33.25 - 34.00; Good 31.00 - 33.25; Holsteins 2-3 1100 - 1300 31.00 - 31.90; Standard and Low-Good 30.00 - 31.00.

Heifers: Load High-Choice and Prime 3-4 1073 pounds 34.60; 910 - 1155 34.00 - 34.25; Choice 2-4 825 - 1025 33.00 - 34.00; Mixed Good and Choice 750 - 975 32.25 - 33.00; Good 28.50 - 32.25; Standard and Good 27.00 - 28.50.

Cows: Utility and Commercial 23.25 - 25.50; Utility Dairybreds 25.75 - 26.00; Mixed Cutter and Utility 23.75 - 24.00; Canner and Cutter 20.50; Shelley Canner 18.50 - 20.50.

Bulls: Utility, Commercial and Good 26.50 - 29.50; Commercial 29.75 - 30.00; Cutter and Low-Utility 23.50 - 26.50.

Futures Trading

(Closing bids as of Thursday, April 6)

	Chicago Cattle	Chicago Hogs	New York Maine Potatoes	Chicago Fresh Eggs
April	35.10	24.70	2.71	23.25
May			3.23	26.75
June	34.10	27.70		30.05
July		27.80		32.25
August	33.60	27.45		
September				39.35
November			2.71	
October	32.90	26.00		37.50
December	32.52	26.42		40.20
February '73	32.65	26.37		
April	32.55			

Trend - Cattle are stronger, Hogs are stronger, potatoes are steady, and Eggs are higher.

a-asked b-bid n-normal

Markets provided by Commodity Dept., Reynolds Securities, Inc.

Lebanon Valley Auction

Tuesday, April 4
355 Head of Cattle

Compared with last Tuesday's market, slaughter steers grading Good and Choice steady to 75c lower. Slaughter cows steady to 50c higher. Slaughter bulls weak to 75c lower.

Steers: Couple High-Choice 36.35; Choice 1050-1150 pounds 34.60-35.60; Good 32.25-34.00; Standard 28.85-30.50; Utility (few) 26.85-27.85.

Feeder Steers

Outshipments only 800 head compared to 1400 previous week, mainly fleshy two-way steers and heifers. Prices weak to 50c lower under influence to declining slaughter cattle prices.

Steers: Choice, small lots, 414-422 pounds 40.00 - 45.00; High-Good and Choice 819 - 1027 33.00 - 34.50; part load Good 790 pounds 32.50.

Heifers: Choice, small lots, 341 - 525 pounds 35.00 - 37.00; Choice 720 - 889 32.50 - 33.50.

Heifers: Choice (individual) 32.85; Good (few) 28.85-20.35; Standard (few) 27.00-28.85.

Cows: Utility and High Dressing Cutter 25.50-27.00, couple to 27.60; Cutters 23.85-25.50; Canners 22.50-23.85; Shells down to 21.00.

Bulls: Good 31.00-32.85; Utility and Commercial 28.85-32.00.

227 Head of Veal Calves
Vealers grading Choice \$1 to \$3 lower.

Prime (few) 58.00-60.00; Choice 52.00-57.00; Good (few) 50.00-51.50; Standard (few) 47.00-50.00; Utility 90-120 pounds (few) 37.00-42.00; 70-85 pounds (few) 31.50-37.00.

Farm Calves: Bulls 80-120 pounds 39.00-61.00; Heifers 85-165 pounds 50.00-88.00.

Peoria Cattle

Thursday, April 6
Receipts this week 3900; last week 4100; last year 1200.

As compared to last weeks close, slaughter steer and heifer prices ended unevenly 50-1.00 lower. Cow prices fluctuated but closed generally steady. Bulls steady. Supply consisted mainly of Mixed Good to Choice 975-1150 pounds steers. Slaughter heifer supply consisted mostly of Mixed Good to Choice lots. Only a few loads of Mixed Choice with few Prime steers were marketed.

Slaughter Steers: Few loads Mixed Choice with few Prime 1225-1300 pounds yield grade mostly 2-4, 36.00-36.50. One load on Monday at latter price. Choice 975-1300 pounds 2-4, 34.00-36.00. Several loads Low Choice 975-1150 34.00-34.50. Mixed Good and Choice 925-1175 33.00-34.00. Good 30.00-33.25.

Slaughter Heifers: Few head prime around 1100 pounds 3-4, 35.00. Choice 825-1000 2-4, 33.00-34.00. Mixed Good and Choice 750-975 32.75-33.25. Good 29.25-32.75.

WINPOWER



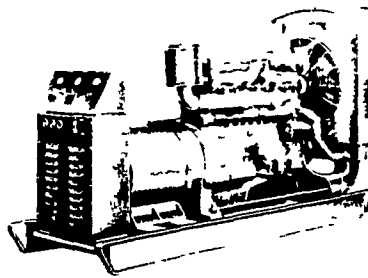
GASOLINE - GAS - DIESEL - GENERATING SETS FOR:

- DAIRY FARMS
- POULTRY HOUSES
- HATCHERIES
- FIRE DEPARTMENTS
- INDUSTRIAL PLANTS
- RESIDENTIAL
- ANYWHERE STAND-BY POWER IS NEEDED

STAND-BY or CONTINUOUS DUTY ALTERNATORS & CONTROLS

BRUSHLESS EXITATION

6 KW thru 125 KW



We design and install complete Automatic Systems. We Service and Repair any make Generator.

Also offer Preventive Maintenance on a contract basis to keep your generator in sure running condition.

Specialists In Electric Power Generating Equipment



ELECTROMECC

ELECTROMECHANICAL SERVICE
ROUTE 222, EPHRATA, PA. 17522

PHONE (717) 733-7911

ELECTRIC MOTOR ● GENERATOR ● POWER TOOL SPECIALISTS

COUNTIES SERVED
LANCASTER
BERKS
LEBANON
DAUPHIN
SCHUYLKILL

Lebanon Valley Livestock Market, Inc.

1 mile east of Fredericksburg along Route 222

Phone Jonestown 865-2881

Sale every Tuesday at 1:30 P.M. starting with feeder cattle and pigs