

Champion Show Steer "Donated" Twice

The 4-H Baby Beef and Lamb Sale is the traditional wind-up of the annual Pennsylvania State Farm Show with tens of thousands of dollars finding its way into college education funds of young farmers around the state.

One of the prize steers that went under the auctioneer's hammer this year eventually did double duty in raising money for worthwhile projects.

It was a 1,205-pound Shorthorn steer, exhibited by Robert Hess, Mountville, and judged champion of its breed in the 4-H Baby Beef Show. A fellow Lancaster Countian, Charles Myers, although a dairy breeder, was justifiably proud of the achievement of the youthful livestock feeder and paid a good price for the market-ready animal.

Myers, an outstanding Holstein breeder, had in mind honoring a former Holstein breeder and close friend, Pennsylvania Secretary of Agriculture Jim McHale, by presenting him with the champion steer. Secretary McHale was indeed honored but advised Myers that such gifts to state officials are prohibited.

As an alternative, the Lan-

caster County dairyman proposed that Secretary McHale donate the champion Shorthorn or its value to his favorite charity. The Secretary agreed and arrangements were made to present a check to Mrs. Milton J. Shapp for the Hamilton Area Late Start Project, a recreational and health project for the neighborhood elderly headquartered in the Governor's Mansion.

The champion Shorthorn steer not only generated considerable money for Robert Hess' future plans, but also resulted in a generous contribution to the elderly, through Mrs. Shapp's Late Start Project.

Four Attend Dairy Seminar

Mr. and Mrs. Lewis W. Shore, Washington Boro, and Mr. and Mrs. Lester M. Hawthorne, Elizabethtown, recently returned from a three-day visit to Disney World, Lake Buena Vista, Florida.

Purpose of their visit was to attend a "Profitable Growth for Dairyman" seminar emphasizing dairy farm management.

A partial list of speakers included William Van Dusen, president, Management Center for Agri-business; Dr. Robert Walton, president, American Breeders Service, and Hi Brown, Michigan State University economist.

Dr. Walton spoke on "Selecting Dairy Sites". Cole Townley, Texas rancher and authority on plant nutrition, addressed the group on the value of harvesting crops with more feeding power.

The seminar was sponsored by Penn-Jersey Harvestore Systems, Inc., New Holland.

Migrators

The best known migrators besides birds are probably the lemmings of Scandinavia, which, at intervals, travel toward the Atlantic Ocean, sometimes even plunging into the sea. Several of the common bats, also, undertake a true migration in the autumn.



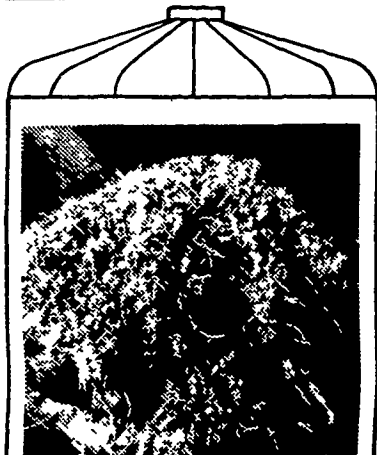
Robert Hess, son of Mr. and Mrs. Gerald Hess, Mountville, was photographed with his Champion Shorthorn following the 4-H Baby Beef Show at the annual Farm Show

in Harrisburg. The animal was purchased by Charles Myers, Lancaster, and later donated to Secretary McHale.



Mrs. Milton J. Shapp, center, accepts a check from Mrs. James McHale, right, wife of Pennsylvania's Secretary of Agriculture, on behalf of the Hamilton Area Late Start Project. Secretary McHale made the contribution after being presented with the prize-winning Shorthorn from the 1972

Baby Beef Show. On the left is Mrs. Katherine D. McClintock, executive director, Hamilton Area Late Start Project, a health and recreation program for the elderly which meets in the south wing of the Governor's executive mansion.



Moses Garman Meyerstown, Pa.

"Double cropping and the Harvestore System has boosted our production to 1,000 lbs. of beef per acre ..."

We can produce very economical gains with a high forage ration but we still get a good rate of gain . . . better than two pounds a day on forage and just a little grain. The Harvestore System has doubled our cattle capacity. Haylage and high moisture corn gives us a very competitive cost of gain. I sure wouldn't want to go back to a trench silo or baled hay."

PENN-JERSEY HARVESTORE SYSTEMS, INC.

New Holland, Pa.
Phone: (717) 354-5171
1971 HARVESTORE DEALER OF THE YEAR

NOW IS THE TIME . . .

TO TAKE ADVANTAGE OF OUR

EXTRA SPECIAL DISCOUNTS

ON ALL NEW FARM

★ TRACTORS ★ BALERS

★ FORAGE HARVESTERS

★ MOWER CONDITIONERS

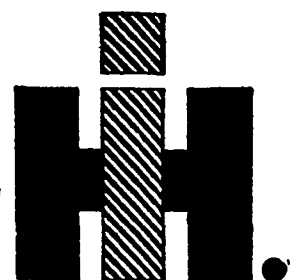
★ COMBINES

BE SURE TO SEE US BEFORE YOU BUY AND SAVE



INTERNATIONAL HARVESTER

SALES & SERVICE



1054 S. STATE ST. EPHRATA, PA.

PHONE 733-2283