

Hog Prices

Vintage Auction

Tuesday, March 28
Barrows and Gilts 50-75 lower.
Barrows and Gilts: US 1-2 200-235 lbs. 23.85-24.10; US 2-3 195-250 lbs. 23.35-23.85.

New Holland Auction

Monday, March 27
Hogs 1329: Barrows & Gilts: Fully \$1 lower. US No. 1-2 200-240 lbs. 24.25-26.00; US No. 1-3 200-245 lbs. 23.75-24.25; US No. 2-4 195-260 lbs. 21.50-23.75; US No. 2-4 170-190 lbs. 21.50-23.75.
Sows: US No. 1-3 300-500 lbs. 19.50-22.00.
Boars: 19.00-21.00.

Lancaster Market

Monday, March 27
Barrows and Gilts 25-50 lower with most late sales 50 lower.
Barrows and Gilts: US 1 200-240 lbs. 25.25-25.75; US 1-2 200-240 lbs. 24.50-25.00; US 2-3 195-250 lbs. 24.00-24.25, few early 24.50; 250-270 lbs. 23.50-24.00.

Lebanon Valley Livestock Market, Inc.

1 mile east of
Fredericksburg
along Route 222

Phone Jonestown
865-2881

Sale every Tuesday at 1:30
P.M. starting with feeder
cattle and pigs

Lancaster Auction

Barrows and Gilts steady to weak.
Barrows and Gilts: US 1 210 lbs. 25.50; US 1-3 210-245 lbs. 24.00-24.35; US 1-3 200-210 lbs. 23.85-24.00.

Lebanon Valley Auction

Tuesday, March 28
275 Head of Hogs
Barrows and Gilts 75c to \$1 lower.
Barrows and Gilts: U.S. 2-3 195-240 pounds 23.50 - 24.00; 2-4 195 - 250 23.00 - 23.35; 2-4 150 - 190 21.00 - 21.75.
Sows: U.S. 1-3 300 - 550 pounds 19.50 - 20.60.
Boars: 19.00 - 19.75.
50 Head of Feeder Pigs
Few lots No. 1-3 25 - 35 pounds 10.50 - 12.00 per head.

Peoria Auction

Hogs: 3500. Active, opening strong to 25 higher. US 1-2 200-230 lbs. 23.75-24.25; 150 head 24.50; 1-3 200-250 lbs. 23.25-23.75.

Indianapolis Auction

Hogs: 2000. Steady to strong, instances 25 higher, moderately active. US 1-2 200-240 lbs. 24.00-24.25; 1-3 200-245 lbs. 23.50-24.00; 2-3 230-265 lbs. 23.00-23.50.

Omaha Cattle

Thursday, March 30
Compared with last weeks close closing prices slaughter steers 25c higher, instances 50c higher. Heifers steady to strong. Cows 50-75c higher and bulls fully steady. Modest feeder supply steady, the outgo mainly fleshy two-way steers.

Four day receipts 16,500 as compared 14,800 previous week and 18,300 a year ago. Slaughter steers approximately 41 per cent, heifers 38 per cent, cows 10 per cent and feeders 8 per cent. The fed cattle trade during Holy Week followed a stable course but buyers only mildly aggressive in view of unresponsive trade on carcass beef at wholesale level. For first time in five weeks, closing prices on steers and heifers strong to higher. Some plants planned to observe non-slaughter holiday in observance of Good Friday and late demand adjusted accordingly. Fair percentage of Choice Steers and Heifers but High-Choice and Prime in limited supply most days.

Average cost slaughter steers

St. Louis Auction

Hogs: 5000. steady to 25 lower. US 1-3 200-230 lbs. 23.50-23.75; 100 head US 1-2 200-220 lbs. 24.00; 50 head US 1 24.25, 1-3 230-250 lbs. 23.00-23.50.

U. S. Inspected Livestock Slaughter

For the week ending Thursday, March 30

	CATTLE	HOGS	SHEEP
This week	115,000	348,000	44,000
Week ago	111,000	349,000	43,000
Year ago	106,000	346,000	45,000
Week to date	459,000	1,399,000	170,000
Same period last week	455,000	1,401,000	167,000
Same period last year	434,000	1,415,000	177,000

Futures Trading

(Closing bids as of Thursday, March 30)

Chicago Cattle	Chicago Hogs	New York Maine Potatoes	Chicago Fresh Eggs
----------------	--------------	-------------------------	--------------------

No Futures Reported Due to Good Friday Holiday.

first three days 34.47 average weight 1147 pounds as compared 34.35 and 1133 pounds previous week and 31.44 and 1133 pounds a year ago.

Market Steers

Steers — High-Choice and Prime U.S. 2-4 1075 - 1311 35.25-35.50, ten loads at latter price; Choice 975-1325 34.25-35.25; Mixed Good and Choice 950-1225 33.75-34.25; Good 31.75-33.50; Holsteins 2-3 31.75-32.00; Standard and Low-Good 30.50-31.75.

Heifers — High-Choice and Prime U.S. 3-4 979 pounds 35.10; 910-1070 34.65-35.00, Choice 2-4 825-1025 33.50-34.60, Mixed Good and Choice 750-975 32.75-33.50, Good 28.50-32.50; Standard and Low-Good 27.50-28.50.

Cows — Utility and Commercial 24.25-26.25; Utility Dairybreds 26.50; Canner and Cutter 21.00-24.25; Mixed Cutter and Utility 24.50-24.75; Shelly Canner 19.00-21.00.

Bulls — Utility, Commercial and Good 26.50-29.50; Commercial 30.00, Cutter and Low-Utility 23.00-26.50.

Feeder Steers

Outshipments 1,400 head as compared 1,200 previous week, supply mainly High-Good and Choice fleshy two-way steers. Demand continued good for partly finished cattle suitable for a short turn in the feedlot.

Steers — High Good and Choice 650-750 pounds 36.00-37.50; 872-1083 33.50-34.75.

Heifers — Choice (few) 550-625 pounds 35.00-35.35; High-Good and Choice 750-850 32.50-33.50.

Peoria Cattle

Thursday, March 30

Receipts this week 4100; last week 5800; last year 1600. As compared to last weeks close, slaughter steers ended steady to 25, instances 50 higher. Most increase on Average Choice and below grade steers. Slaughter heifers closed steady to strong. Cows were strong to 50 higher. Bulls steady. Supply mainly Average Good and Choice slaughter steers and heifers, with only a few loads Mixed Choice and Prime steers; balance of receipts mainly cows.

Slaughter Steers: Mixed High Choice and Prime 1150-1350 pounds 3-4, 37.00-37.25. Choice 975-1300 2-4, 35.00-36.50. Mixed Good and Choice 950-1200 34.25-35.00. Good 30.75-34.25. Few Good Holsteins 31.50. Standard Holsteins 30.50.

Slaughter Heifers: Pkg mostly Prime around 1000 pounds 3-4, 35.25. Choice 825-1050 2-4, 34.00-34.75, few 35.00; several 34.00-34.50. Mixed Good and Choice 750-925 33.00-34.00. Good 29.25-33.25. Few Good Holsteins 31.00.

Cows: Commercial 22.00-25.00. Utility 23.50-27.00. Cutter 21.50-25.50. Canner 18.00-22.00.

Bulls: Utility and Commercial 27.50-31.00

West Nottingham Auction Rt. 276, Rising Sun, Md.

Monday, March 27

Calves: 85 - 115 pounds, 39.50 - 57.00; 115 - 140, 47.00 - 59.50; 140 - 240, 48.00 - 62.50.

Cows: Good Commercial, 25.00 - 27.50; Cutter, 20.00 - 24.75; Culls, 13.50 - 19.00.

Steers: 795 - 1,000 pounds, 33.00 - 34.75; Feeders, 370 - 780, 28.00 - 39.50.

Heifers: 22.50 - 30.25.
Lambs 30 - 49 pounds, 64.00 - 72.00.

Certainly Lasso® plus atrazine controls fall panicum.

Plenty of growers last season learned that the "foxtail" they thought grew through their herbicide was really fall panicum.

And plenty of growers this season will learn that if you tank mix Lasso plus atrazine, you won't find fall panicum. Nor will you find giant foxtail, crabgrass and most other grasses...or lots of broadleaves like smartweed, pigweed, cocklebur.

Lasso plus atrazine gets 'em all in corn.



That's what you expect from your herbicide.

P. L. ROHRER & BRO., INC.

Smoketown, Pa.

Ph. 397-3539

Regional Hay Prices

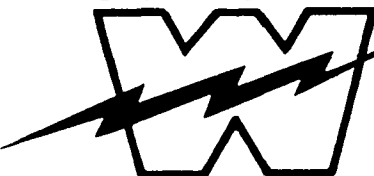
For Southeastern and South Central Pennsylvania

Monday, March 27

(All hay No. 2 and better, prices paid by dealers at the farm price per ton).

Hay and straw slow, steady.	
Alfalfa	40.00-47.00
Timothy hay	22.00-35.00
Mixed Hay	27.00-40.00
Straw	25.00-30.00
Mulch	12.00-20.00

WINPOWER



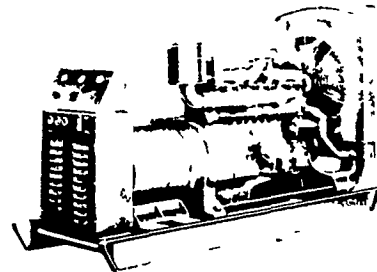
GASOLINE GAS - DIESEL - GENERATING SETS FOR

- DAIRY FARMS
- POULTRY HOUSES
- HATCHERIES
- FIRE DEPARTMENTS
- INDUSTRIAL PLANTS
- RESIDENTIAL
- ANYWHERE STAND-BY POWER IS NEEDED

STAND-BY or CONTINUOUS DUTY ALTERNATORS & CONTROLS

BRUSHLESS EXCITATION

6 KW thru 125 KW



We design and install complete Automatic Systems. We Service and Repair any make Generator.

Also offer Preventive Maintenance on a contract basis to keep your generator in sure running condition

Specialists In Electric Power Generating Equipment



ELECTROMECH

LECTROMECHANICAL SERVICE
ROUTE 222, EPHRATA, PA. 17522
PHONE (717) 733-7911

COUNTIES SERVED
LANCASTER
BERKS
LEBANON
DAUPHIN
SCHUYLKILL

ELLCTRIC MOTOR • GENERATOR • POWER TOOL SPECIALISTS