

Hog Prices Vintage Auction

Saturday, March 18
Hogs 826: Barrows & Gilts 25c to 50c higher. Few US No. 1-2 190-245 lbs. 26.00-26.25; US No. 1-3 190-250 lbs. 25.50-26.00; US No. 2-4 185-255 lbs. 25.00-25.50; US No. 3-4 245-300 lbs. 22.50-24.85; US No. 2-4 100-180 lbs. 20.85-23.00.
Sows: US No. 1-3 300-575 lbs. 19.50-21.25.

Tuesday, March 21
Barrows and Gilts 1.00 lower, instances 1.25.
Barrows and Gilts: US 1 200-230 lbs. 25.00-25.75; US 1-2 200-240 lbs. 24.60-25.00; US 2-3 195-250 lbs. 24.00-24.60; mainly 24.35-24.60; One lot US 2 180 lbs. 23.50.

Lebanon Valley Auction

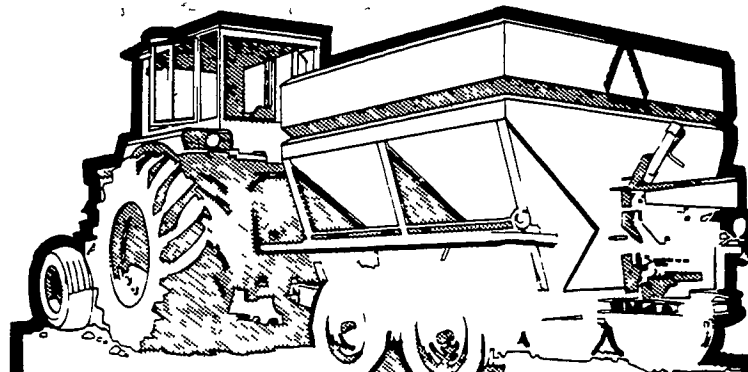
Tuesday, March 21
308 Head of Hogs
Barrows and Gilts 50c to 75c lower.
Barrows and Gilts: U.S. 2-3 190-240 pounds, 24.35 - 25.00; 2-4 200-260, 23.25 - 24.25; 2-4 160 - 185. 23.50 - 24.00.
Sows: U.S. 2-3 350 - 575 pounds, 20.50 - 21.00.
Boars: 19.25 - 20.00.
33 Head of Feeder Pigs
Few lots U.S. 1-3 34 - 40 pounds, 15.00 - 17.75 per head.

U. S. Inspected Livestock Slaughter

For the week ending Thursday, March 23

	CATTLE	HOGS	SHEEP
Week to date	465,000	1,400,000	163,000
Same period last week	470,000	1,329,000	155,000
Same period last year	464,000	1,481,000	166,000

Estimated daily livestock slaughter under Federal Inspection.



**ONCE
ACROSS THE FIELD
DOES IT**



P. L. ROHRER & BRO., INC.

SMOKETOWN, PA.

Nottingham Auction

Monday, March 20
Sows — 275-490 pounds, 19.50 - 22.50.
Boars — 20.00.

Indianapolis Auction

Hogs: 2500. Mostly steady to instances 25 lower, most decline on 200-230 lbs. moderately active. Few 1-2 200-230 lbs. 24.50; 1-3 200-245 lbs. 24.00-24.50; 2-3 230-260 lbs. 23.50-24.25; 260-270 lbs. 23.00-23.50.

St. Louis Auction

Hogs: 6500. Steady to 25 lower. 1-2 200-230 lbs. 24.25-24.50; 1-3 200-220 lbs. 24.00-24.25; 1-3 220-240 lbs. 23.75-24.25.

Peoria Auction

Hogs: 4000, moderately active, mostly steady 1-2 200-230 lbs. 24.00-24.75; 1-3 200-240 lbs. 23.50-24.00.

Lancaster Market

Monday, March 20
Barrows and Gilts strong to mostly 25 higher.
Barrows and Gilts: US 1 200-235 lbs. 26.50-26.75; US 1-2 200-245 lbs. 25.75-26.25; US 2-3 195-250 lbs. 25.00-25.75; US 3-4 250-270 lbs. 24.50-25.00.

Lancaster Auction

Wednesday March 22
Barrows and Gilts 75-1.00 lower.
Barrows and Gilts: US 1 225-235 lbs. 26.00; US 2-3 195-250 lbs. 24.50-24.85; US 3-4 250-270 lbs. 24.10-24.50; US 3-4 345-355 lbs. 21.00.

New Holland Auction

Monday, March 20
Hogs 1198: Barrows & Gilts: Steady to 25c lower. Few US No. 1-2 200-245 lbs. 25.25-27.00; US No. 1-3 200-245 lbs. 24.85-25.25; US No. 2-4 190-265 lbs. 24.00-24.85; US No. 2-4 170-190 lbs. 23.50-24.85;
Sows: US No. 1-3 300-550 lbs. 20.00-22.50.
Boars: 20.00-21.50.

Lebanon Valley Auction

Tuesday, March 21
450 Head of Cattle
Compared with last weeks market, slaughter steers grading Standard and Good 50c - \$1 lower. Slaughter cows 25c to 75c lower. Slaughter bulls grading Utility and Commercial \$1 lower.
Steers: Choice (few), 35 25 - 36.00; Good, 32.10 - 35.00; Standard, 29.00 - 31 00; Utility, 27.50 - 28.50.
Heifers: Choice (few), 31.25 - 32.00; Good, 29.50 - 31 50, Standard (few), 27 75 - 28.60; Utility (few), 26.10 - 27.00.
Cows: Utility and High Dressing Cutter, 25.00 - 27 10; Cutters, 23 35 - 25.00; Canners, 22.00 - 23.50; Shells down to 20.00.
Bulls: Good, 31.00 - 33 10; Utility and Commercial, 28.75 - 32.50, individual at 34 35.

260 Head of Veal calves
Vealers grading Good and Choice about steady.
Prime, 58.00 - 62.50; Choice, 55.00 - 58.00; Good, 50.00 - 55 00; Standard (few), 45.00 - 50.00; Utility (few) 70 - 85 pounds, 36.00 - 37.50.
Farm Calves: Bulls 85 - 115 pounds, 44 00 - 58 50; Heifers 85 - 125 pounds, 50.00 - 55.00.

89 Head of Sheep and Lambs
Lambs: Choice 70 - 100 pounds, 30.00 - 32.00; 20 - 25 pounds (few), 61.00 - 67 00; 30 - 40 pounds (few), 43 00 - 48.00; 45 - 65 pounds, 30 00 - 37.00, 65 - 100 pounds, 33.50 - 38.50
Ewes: Slaughter ewes (few), 6.00 - 10.00.

Futures Trading

(Closing bids as of Thursday, March 23)

	Chicago Cattle	Chicago Hogs	New York Maine Potatoes	Chicago Fresh Eggs
March				
April	34.80	25.10	2.67	24 35
May			3 14	26 25
June	33 95	27.20		
July		27.90		
August	33.45	27 60		
September				36 90
November			2 74	
October	32.70	26 00		36.25
December	32 50	26.50		38.30
February '73	32.60	26 20		
April	32.40			

Trend - Cattle are higher, Hogs are lower, Potatoes are steady and Eggs are lower

a-asked b-bid n-normal
Markets provided by Commodity Dept., Reynolds Securities, Inc.

Green Dragon Dairy Cattle

Friday, March 17
The Green Dragon market reported receipts of 90 head of cattle, attendance good, prices steady

Consignments included:
Load Pennsylvania cows, fresh, 370 - 660; springers, 415 - 600; one Guernsey springer, 320.
Load Pennsylvania cows, fresh, 425 - 520, springers, 304 - 460.
Load Pennsylvania springers, 247 50 - 397.50
Load Wisconsin cows, fresh, 415 - 670
Load Mixed cows, fresh, 345 - 565.

Beef Cows
Beef sale found prices stronger in active market; feeder cattle had light run but active market
Beef Cows: Utility and High Dressing Cutters, 26 00 - 28 00, Cutters, 23 00 - 26.00, low Cutters, 20.00 - 23.00.

Peoria Cattle

Thursday, March 23
Cattle Weekly; receipts this week 5800, last week 4200, last year 1900

(As compared to the previous weeks close), Slaughter Steers and Heifers 25 to mostly 50 lower Cows uneven, but generally steady to 50 higher Bulls steady Supply mainly High Good and Choice Slaughter Steers and Heifers with several loads Mixed Choice and Prime Steers, balance of receipts mainly Cows

SLAUGHTER STEERS: Mixed Choice and Prime 1200-1350 lbs yield grade 3-4, 36 75-37 50 Choice 975-1275 lbs yield grade 2-4, 34.75-37 00 Mixed Good and Choice 900-1150 lbs 34 00-35 50 Good 30 50-34 75 Standard and Good 29 00-30 50
SLAUGHTER HEIFERS: Choice 850-1050 lbs. yield grade 2-4, 33.75-35 50 Mixed Good and Choice 750-950 lbs 33 00-34 25 Good 29.00-33 50
COWS: Commercial 22 50-25 00 Utility 24 00-26 50 Cutter 22 00-25 50 Canner 18 50-23 00
BULLS: Utility and Commercial 27 50-31 50, Couple at 33 00.

Oklahoma City

Market report not available at time of publication.

Omaha Cattle

No market report available at time of publication

The income of the U S farmer is 25 per cent less than that of a member of the nonfarm population

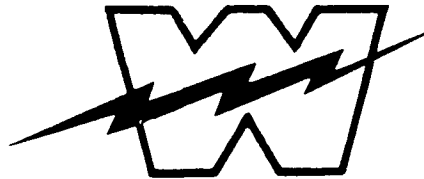
Lebanon Valley Livestock Market, Inc.

1 mile east of
Fredericksburg
along Route 222

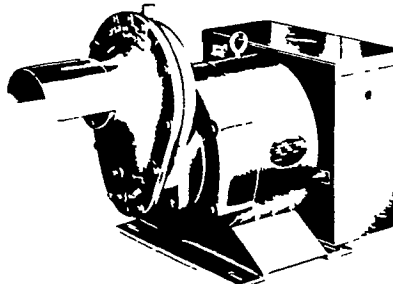
Phone Jonestown
865-2881

Sale every Tuesday at 1:30 P.M. starting with feeder cattle and pigs

WINPOWER



TRACTOR DRIVEN
ALTERNATORS



WORLD'S LARGEST
MFG. OF
TRACTOR-DRIVEN
ALTERNATORS

PTO Units
Available From
7 KW to 60 KW
20 Year
Warranty

POWER
WHEN YOU NEED
IT MOST

1800 RPM

INSIST on a FREE
WINPOWER DEMONSTRATION

at YOUR Farm
Before You Buy ANY Tractor
Driven Alternator

L. J. EDWARDS
FARM SALES, Manager

CALL NOW



ELECTROMECH
ELECTROMECHANICAL SERVICE
ROUTE 222, EPHRATA, PA. 17522
PHONE (717) 733-7911

LP NATURAL GAS
GASOLINE
DIESEL
ENGINE GEN
SETS TO
200,000 WATTS

ELECTRIC MOTOR • GENERATOR • POWER TOOL SPECIALISTS