

Annual Solanco FFA Banquet Is Held

The annual Solanco FFA Chapter Parent-Son banquet was held Tuesday night at the Middle Octorara Presbyterian Church. The award program included presentation of Star awards as

follows: Jeff Glachin, Star Greenhand; Tom Stottlemyer, Star Chapter Farmer; and David Bitler, Star Red Rose Farmer. Four members were recognized for receiving the

Keystone Farmer degree, the highest degree issued at the state level and given to only the top two per cent of the state's FFA members. The four are: Adolph Bensinger, Fred Edwards, and Clyde and Kenneth Dearolf, brothers.

Foundation awards recognizing outstanding achievement in specific areas of farming were given as follows:

Mike Roland, placement in agriculture production; Wayne Kreider, dairy farming; Roy Douts, ag mechanics; William Hershey, livestock farming; Adolph Bensinger, public speaking; Randy Clark, crop farming; Dave Aument, conservation; Bill Krantz, home improvement, and Rodney Unger, poultry.

Honorary Chapter Farmer awards were given to Glenn D. Fite, Solanco cattle dealer, and Arba Henry, Chapter FFA advisor. The award is given for outstanding assistance to the local chapter.

Special awards included: Donald Reath, the Henry N. Wenger award; Scott Mull, the Farm Women Society 20 award, and Richard Aument, the bankers award by National Central Bank.

Ray Brubaker was recognized for having the first place state wide corn production yield in 1971 with 237 bushels per acre.

Following Brubaker as Chapter winners were: Wayne Kreider, second, with 211 bushels per acre, and Bill Hershey, third, with 176 bushels per acre.



Richard Aument, left, receives the bankers award Tuesday night from Stanley Musselman, farm representative of the National Central Bank.

These outstanding yields were reported last year when many local farmers were suffering severe production losses from southern corn blight.

Project book winners were named. Miss Janet Kauffman was among the winners and she was cited as the first girl in Lancaster County and possibly in the state to receive an award in the FFA Project Book Contest.

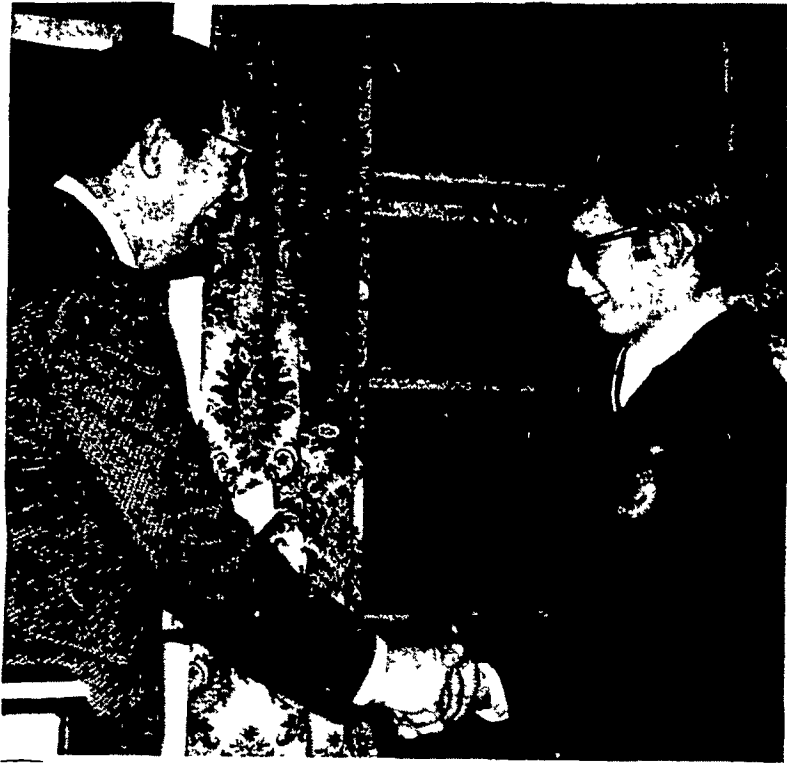
Miss Kathleen Myer received a pin and recognition as Solanco Chapter Sweetheart.

Dave Aument was recognized for his first place showing in Lancaster County and fourth in the state land judging contest. Aument lead Solanco to first place in the county contest.

Adolph Bensinger was first in the county dairy products contest.

In the Lancaster County FFA judging contest at Ephrata Fair top placings by Solanco members included: Scott Mull, first in dairy; Bill Krantz, second in

(Continued on Page 7)



Bill Krantz, right, receives the home improvement award, one of several foundation awards presented at the annual Solanco FFA banquet by Bill Fredd, vo-ag teacher.

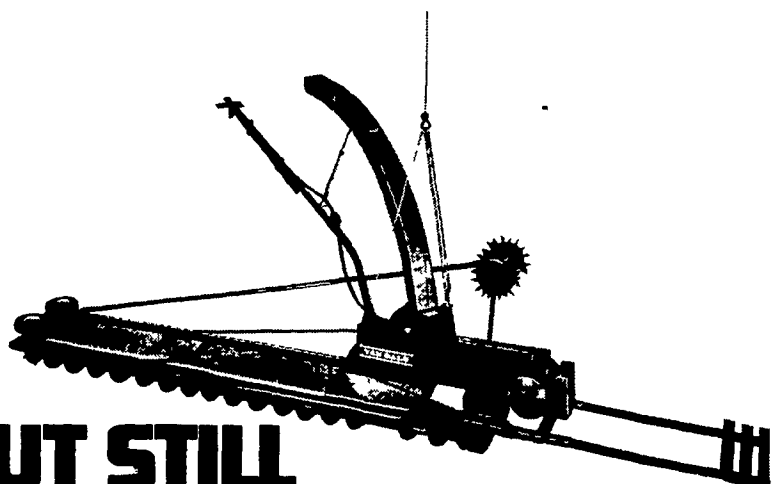


Scott Mull receives the Farm Women Society 20 award Tuesday night at the annual Solanco FFA banquet. Presenting the award is Mrs. David M. Huber.



Miss Kathleen Myer accepts a pin in recognition of her service as Solanco Chapter Sweetheart. Presenting the award is Arba Henry, who was also honored during the annual banquet Tuesday night with the Honorary Chapter Farmer Degree.

THERE'S A LITTLE PART OF VAN DALE IN EVERY UNLOADER...



BUT STILL ONLY ONE THAT'S GOT IT ALL TOGETHER.

In 1950, we introduced the most efficient silo unloader to the market. Simple, but efficient.

We've changed during the last 21 years. Added self-cleaning, wide throat impellers for tough to handle haylage. Dual, no-plug augers for smooth silage movement. Dependable, weather-sealed electrical systems to prevent failures. And numerous other performance-features "firsts."

If you look around, you'll find a little part of VAN DALE in just about every unloader...

But only Van Dale sells it all together.

MODEL 1020 F 10-16 Ft. Diameter Silos—delivery to 15 tons/hr.

MODEL 1230 12-30 Ft. Diameter Silos—delivery to 25 tons/hr.

INDUSTRIAL Up to 40 Ft. Diameter Silos—delivery to 40 tons/hr.

VAN DALE

Box 337, Long Lake, Minnesota

ASK YOUR VAN DALE DEALER ABOUT THE NEW AGRI LEASING PROGRAM

CALEB M. WENGER

Drumore Center R. D. 1, Quarryville, Pa.

Phone 548-2116