

Public Sale Register

(Continued from Page 37)

New Park and go about 1/2 mile to sale. Terms by Mr. & Mrs. Everett Thompson, owners; Robert L. Sechrist, Auctioneer.

SAT MARCH 25- Public Sale of Dairy Herd and Farm Equipment for Wm Ravegum, R D. 4, Manheim Wolgemuth, Auctioneer

SAT MARCH 25- 10 A.M. Public Sale of Full Line of Farm Equipment, Truck, Hand Tools and Antiques located on Shenks Lane, Millersville, Pa. Sale by Mrs. Amos H Charles, Howard Shaub, Auctioneer.

SAT MARCH 25- 11 A.M. Eastern Shore Showcase Sale at West Nottingham Sales Barn, Rising Sun, Md. 35 of the Best Registered Holstein Calves and Heifers from Cecil, Kent, Harford and Caroline Counties

SAT MARCH 25- Andrew Berkins Estate Sale located south of The Buck just off Rt. 272. Diller and Kreider, Auctioneers.

SAT. MARCH 25- 12 Noon Public Sale of Farm Equipment and

Household Goods located along Rte. from Denver to Blue Lake, Hickory Run Park. Sale by Harvey Musser. H. H. Leid, Auctioneer.

MON. MARCH 27- 7 P.M. Holstein & Holstein Cross Feeder Steer Sale at Rockingham

Livestock Sales, Inc., Harrisonburg, Virginia. For information contact Va. Beef Cattle Assoc., P.O. Box 67, Harrisonburg, Va. or Rockingham Livestock Sales, Inc. Harrisonburg, Va.

(Continued on Page 39)

FEEDER PIG SALE SATURDAY, APRIL 1, 1972

2 1/2 miles South of Bethel from US 22 and 6 miles North of Myerstown, Pa., along US 501.

100 to 150 — 40 to 60 lb. Choice Feeder Pigs Hampshire, Duroc and York Cross

All pigs are vaccinated for Erysipelas. Castrated young. Wormed, Sprayed for Mange and Lice.

All pigs were raised on this farm. No outside pigs will sell on this sale. Also pigs will not have to be moved the day of Sale.

These are some of the finer quality feeder pigs in the East.

SALE AT 1:30 P.M.

NORMAN M. MARTIN
RD 1, MYERSTOWN, PA.

PUBLIC SALE

OF VALUABLE FARM MACHINERY & PERSONAL PROPERTY

SATURDAY, MARCH 18, 1972

at 10:30 A.M. Sharp.

Located at RD12 Hellam Branch. At Delroy turn at Helder's Paint Store off East Prospect-York Road. Look for sale arrows.

The undersigned will offer at public sale the following:

4 TRACTORS — 1970 AC 160, 3 pt. hitch, AC 415 loader, Hyd. Manure and snow bucket with weights, only 600 hrs.; 1956 JD 60, live PTO, 3 pt. hitch; 1961 MM 4 star and live PTO; 1958 MM 335, 3 pt. hitch, live PTO, Sauder loader; JD R.W. 28 transport disc, 10' cultipacker, 3 spring harrows, IHC 47 baler and 10 thrower, MM S.K. P.T. cornpicker, JD F.B. 7x15 grain drill, JD 246 2-row corn planter, 3 pt. hitch, M.F. 160 bu. spreader with end gate, Gehl F.H. 80 harvester, corn and grass head, N.H. 30 ft. elevator, Cardinal 16 ft. elevator, 2 N.H. No. 33 crop choppers, J.D. hay crimper, M. M. 3 pt. 7 ft. mower, IHC No. 51 chuck wagon, McCurdy gravity wagon, 2 hay wagons with high sides, J.D. hay fluffer, lime drill, Yellow Devil 200 gal. trailer sprayer, mounted 50 gal. sprayer, J.D. trip standard trailer plow 3x14, MM trip standard 3 pt. plow, 3x14, Farmall wheel rake, N.H. 680 table blower with pipe, JD two row quick attach. cultivators, 3 pt. cultivators, tractor and truck chains, 6 ft. rotary mower, 3 pt. scraper blade, double tobacco ladder wagon, tobacco press, approx. 8,000 lath, 10" Papec hammermill, N.H. plate mill, dump rake, hay tedder, barn fogger, 20" barn fan, 2 exhaust fans, potato grader, cyclone tractor seeder, hand seeders, 1/2 ton chain hoist, Homelite 20" chain saw, Myers weed sprayer, Lincoln 225 amp. welder, 3/4 HP jet shallow well pump, small air compressor, 40' endless belt, Simplicity riding mower, 3/4 HP and 5 HP electric motors, hog troughs, 4 can milk cooler, 2-32 ft. extension ladders, cow clippers, 3 fence chargers, platform scales, milk cans, some of the usual small items. Also some household goods and antique items. Machinery loading facilities. Farmers, if you need machinery don't miss this fine sale. Not responsible for accidents on day of sale. Refreshments on the premises.

Terms-Cash, certified or cashiers checks.

WILLIAM C. & VIOLA M. BUSER

Jacob A. Gilbert, Auctioneer
Frey, Leber & Kline, Clerks

Public Sale

of

FARM MACHINERY

FRIDAY, MARCH 24, 1972

AT 11:00 A.M.

Located 10 mi. South of Quarryville off 222 or 1 mi. East of Wakefield off 272.

Super Farmall H. with loader, Farmall H., Farmall H. with sprayer, M.F. 3 pt. mounted plow with 4-16" trip bottoms, 2 bottom Oliver raydex-trailer plow, 20" cutaway disc with 2 way cylinder, M.H. 28 disc transport, 6 ft. off set disc transport, 28 section disc, John Deere 12 ft. cultmulcher, Oliver double & Cobby single cultipackers, N.H. Fertilizer Drill, Superior 13 disc grain drill, John Deere 290 corn planter, N.H. No. 36 flail chopper, Case 30' elevator, N.H. blower, N.H. 461 haybine, M.F. pitmanless mower, 27-V inter. mower 7 ft., Meyer crusher, inter. 3 bar and McCormick Deering 5 bar rakes, inter. No. 46 bailer, 2 rubber tired wagons, Case Wagon McCurdy bin, steel wheel wagon with feed bunk, feed chest, New Idea No. 17 & Zimmerman P.t.o. manure spreaders, P.R.I. McCormick Deering picker, 3 pt. Case rake, Danuser post hole digger, 2 electric fences, inter-like new & farm bureau, 5 new aluminum scoop shovels & odd tools. Many more items to numerous to mention.

FEW HOUSEHOLD GOODS

Old corner cupboard, breakfast set, utility cabinets. Norge gas stove, buffet, Zenith Hi-Fi, 23 in. TV. Not responsible for accidents day of sale.

Sale by
HARRY L. ULRICH

Auct. Lloyd H. Kreider

Refreshments:

PUBLIC SALE

FULL LINE OF

FARM EQUIPMENT, TRUCK
HAND TOOLS & ANTIQUES

SATURDAY, MARCH 25, 1972

AT 10:00 A.M.

LOCATED ON SHENKS LANE,
MILLERSVILLE, PA.

Directions: Shenks Lane begins just 1/2 block west of George Ave. and W. Frederick St. intersection. Approx. 1 mile south on Shenks Lane, third farm.

1962 Int. V-8 pick-up truck. Ford 881 tractor with select-o-speed & sander blade. Ford 871 tractor with select-o-speed & Ford 1200 loader. M-Farmall tractor with high comp. kit. Farmall-A tractor with hyd. lift & cultivators. 101 Ford 3-bottom plow. Ford rear mount cultivators. Farmall 3-disc plow. McCormick equip.: 2-row corn planter - 3 p. hook. Hay conditioner rake on rubber. 10 C-hammer mill. No. 82 bottom trailer plow on rubber. Ford 2-row corn planter. 3 h.p. N.H. 68 baler. N.I. 256 mower, 7-6 Lilliston rotary mower. D. J. hay fluffer. Case 28 disc. 7' cultipacker. 3-section spring harrow. Pr. 13.6 x 28 tractor chains. Two 16' wagons on rubber. 14' trailer. Case 13 disc drill on rubber. Tractor mounted grass seeder. 28' x 24' Smoker elevators. 16 Cardinal elevator. Iron Age 10-row mounted sprayer. Trailer sprayer with Myers pump & high pressure hose. N.I. spreader. Tractor mounted saw. Denlinger 3C-Silo filler & pipe. Badger stable cleaner & 5 h.p. motor. Corn sheller. Platform scales. Tobacco press, sizing boxes, shears & spears. Electric cow shears. Fog sprayer, Foot trimmer. 3 DeLaval Pail-type units. New stainless carrying pails & strainer. Milk cans. 6-can rack. 6-can open front & 4-can open top coolers. Vacuum can hoist. Vacuum emergency milking unit. Cow chains & numbers. Chains, ropes, chain hoist. Port. air compressor. Handiman & Planet Jr. garden tractors. 2 rotary & reel lawn mowers. Lawn roller. 4 wheel barrows. Chicken crates, sash frames, walking plow, double & triple trees, deep well hand pump, shutters. Lumber-various sizes. Fence rails 8" x 10" x 20' hand hewn timbers. 32' wooden & 28' alumn. ext. ladders. Lanc. chain saw, elect. saws, small power tools, Variety of barn & hand tools etc. Horse sleigh & bells. Dry sink, stoves, 3 iron kettles, team saddle, other misc. articles. Food available by Rohrerstown Mennonite Y.P.C.A.

SALE BY
MRS. AMOS H. CHARLES

HOWARD SHAUB, AUCTIONEER

MEN NEEDED
in this area to train as

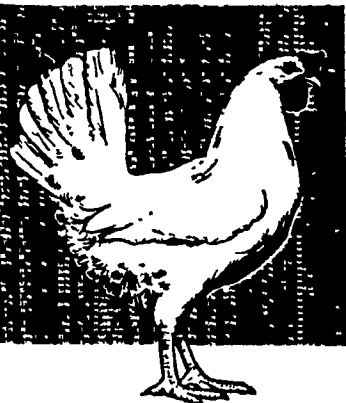
LIVESTOCK BUYERS

LEARN TO BUY CATTLE,
HOGS AND SHEEP

at sale barns, feed lots and
ranches. We prefer to train men
21 to 55 with livestock experience.
For local interview, write age,
phone, address and background
to

NATIONAL MEAT PACKERS
TRAINING

236 Town St.-Dept. PA - 533
Columbus, Ohio 43215



sustain top
production
with the
**BABCOCK
B-300**

Keeping production up...costs
down...is the profit key in poultry
operations. And more and more
records on commercial flocks of
Babcock B-300's... "The Business-
man's Bird"... show sus-
tained production of top quality
eggs...often with an additional
20 to 30 eggs per bird housed
over other strains. Come in...
look at the records and the B-300
... "The Businessman's Bird".



BABCOCK FARMS, INC.

Telephone (717) 626-8561