

Help Us Serve You

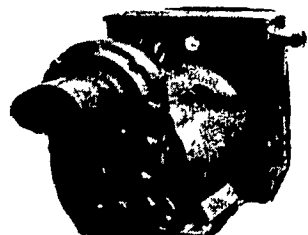
If your organization didn't make our farm calendar this week, it's not because we don't like you or your organization.

We may have missed it in the rush. Or maybe you forgot to tell us.

Either way, we'd like to extend our farm community service to you.

To get on the Farm Calendar, remind us by calling 394-3047 or 626-2191 or by writing to Lancaster Farming, 22 E. Main St., Lititz, Pa. 17543. And help us serve you better.

When Power Fails depend on
PINCOR
Electric Plants



16 KW 28 KW 50 KW

- Rated for continuous duty - 12 KW to 50 KW
- Tractor driven and automatic engine driven
- High motor starting capacities
- Slow speed - 1800 RPM operation
- Heavy duty construction
- Cool running triple chain drive transmission
- Rainproof construction
- Meets NEMA codes
- Completely wired control box
- Trailer and 3-point hitch options

HAVERSTICK BROS.

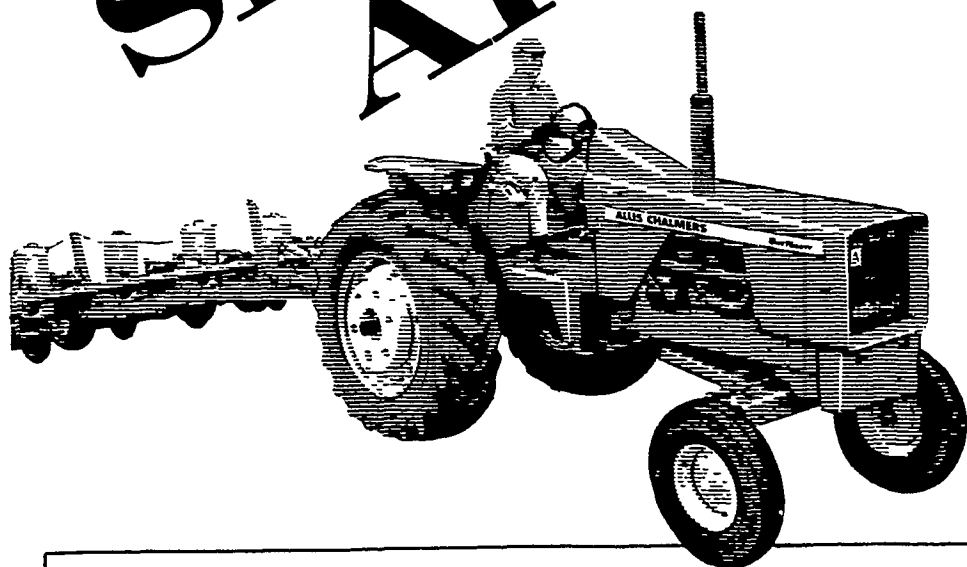
2111 Stone Mill Rd. • Lancaster, Pa.
Phone (717) 392-5722



Willis Rohrer, P. L. Rohrer and Brothers, Inc., Smoketown, middle, was presented a "Golden Dealer" award plaque by D. B. Barlow, general manager of the Ortho Division of Chevron Chemical Company, San Francisco, at right. Looking on is Bob Strawn, Ortho District Representative from Douglasville, who accompanied Rohrer to San Francisco for the Fifth

Annual Ortho Golden Dealer Advisory Panel Conference held to honor the Company's top fertilizer dealers who are both business and community leaders and selected by Chevron Chemical to be among the nation's outstanding representatives of agribusiness. Rohrer and Strawn were featured speakers during the two-day seminar.

**SPRING
AHEAD!**



GET THE JUMP ON THE SPRING RUSH
WITH THE BIG POWER AND
PERFORMANCE OF THE
ALLIS-CHALMERS ONE-NINETY.

OPEN HOUSE

Thursday & Friday
March 9 and 10
9 A. M. to 5 P. M.

**10%
DISCOUNT
ON PARTS**

- DOOR PRIZES
- MOVIES BOTH DAYS
- FREE LUNCH



ROY H. BUCH INC.

EPHRATA RD 2 PENNA.

