

Help Us Serve You

If your organization didn't make our farm calendar this week, it's not because we don't like you or your organization.

We may have missed it in the rush. Or maybe you forgot to tell us.

Either way, we'd like to extend our farm community service to you.

To get on the Farm Calendar, remind us by calling 394-3047 or 626-2191 or by writing to Lancaster Farming, 22 E. Main St., Lititz, Pa. 17543. And help us serve you better.

REMINGTON CHAIN SAW MARCH CLEARANCE SALE



MODELS SL10A
SL10K
SL10

- Cuts trees up to 30"
- Light Weight
- Easy to handle
- Fun to use
- Try it and see

GEHMAN BROS. SALES & SERVICE

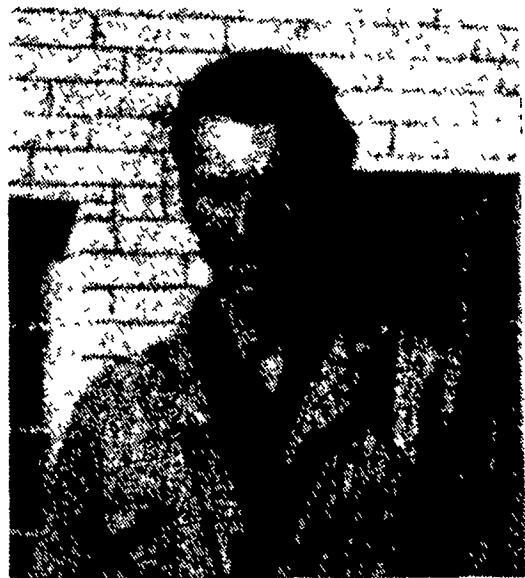
| | |
|---|--|
| 1 mile North of Terre Hill along Rt. 897 | Mon.-Wed.-Fri. 7:00 A.M. to 5:00 P.M. |
| East Earl RD1 Penna. | Tue. - Thur. 7:00 A.M. to 8:00 P.M. |
| Phone 445-6272 | Sat. 7:00 A.M. To 3:00 P.M. |



Participating in a unique public affairs education program being conducted jointly by the Cooperative Extension Service and the Department of Agricultural Economics and Rural Sociology of Pennsylvania State University are: from left, Charles H. Rohrer, Paradise RD1; Peter H. Norton, Extension resource development agent, and Chris M. Lantz, of 53 Logging Road, Leola. The group, meeting in Lewistown, is currently involved in 20 days

of intensive training in economics, sociology, communications, public speaking, meeting management, and government. The sessions are designed to provide the participants with a broader understanding of problems facing rural Pennsylvanians. Those taking part have received W. K. Kellogg Fellowships which are defraying costs of instruction, study materials, and room and board while at the institutes and on field trips.

congratulations to Lester Hawthorne



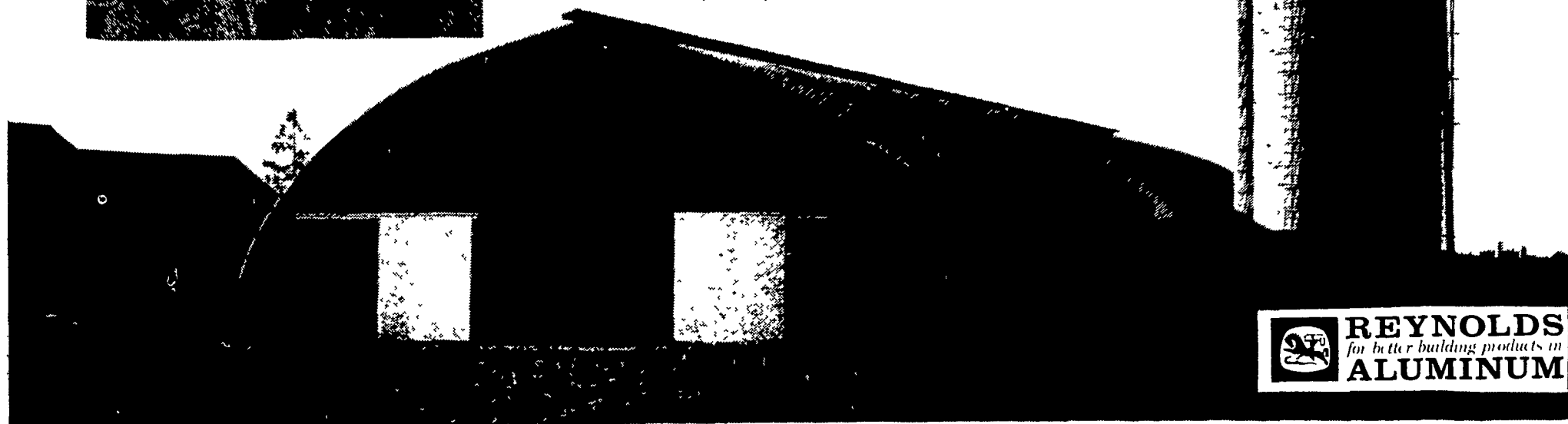
Lester has just completed his new dairy system near Elizabethtown. His building is constructed with 80' clear span laminated rafters and houses 140 cows. His system is designed with liquid manure and has a modern milking parlor with automatic take-off milkers.

AGRI-INC. can help you plan your next building. Call us.

PHONE 717-354-5374



DESIGNERS AND BUILDERS OF SYSTEMS
EPHRATA, R. 2, (Farmersville) PA. 17522



 **REYNOLDS**
for better building products in
ALUMINUM