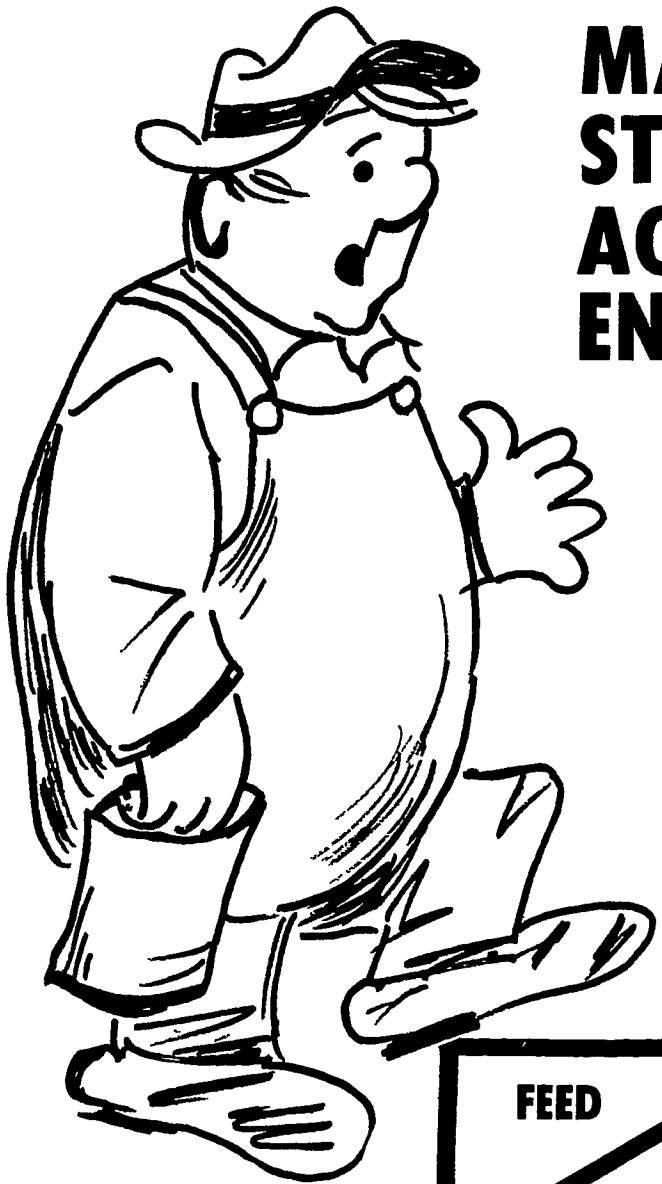
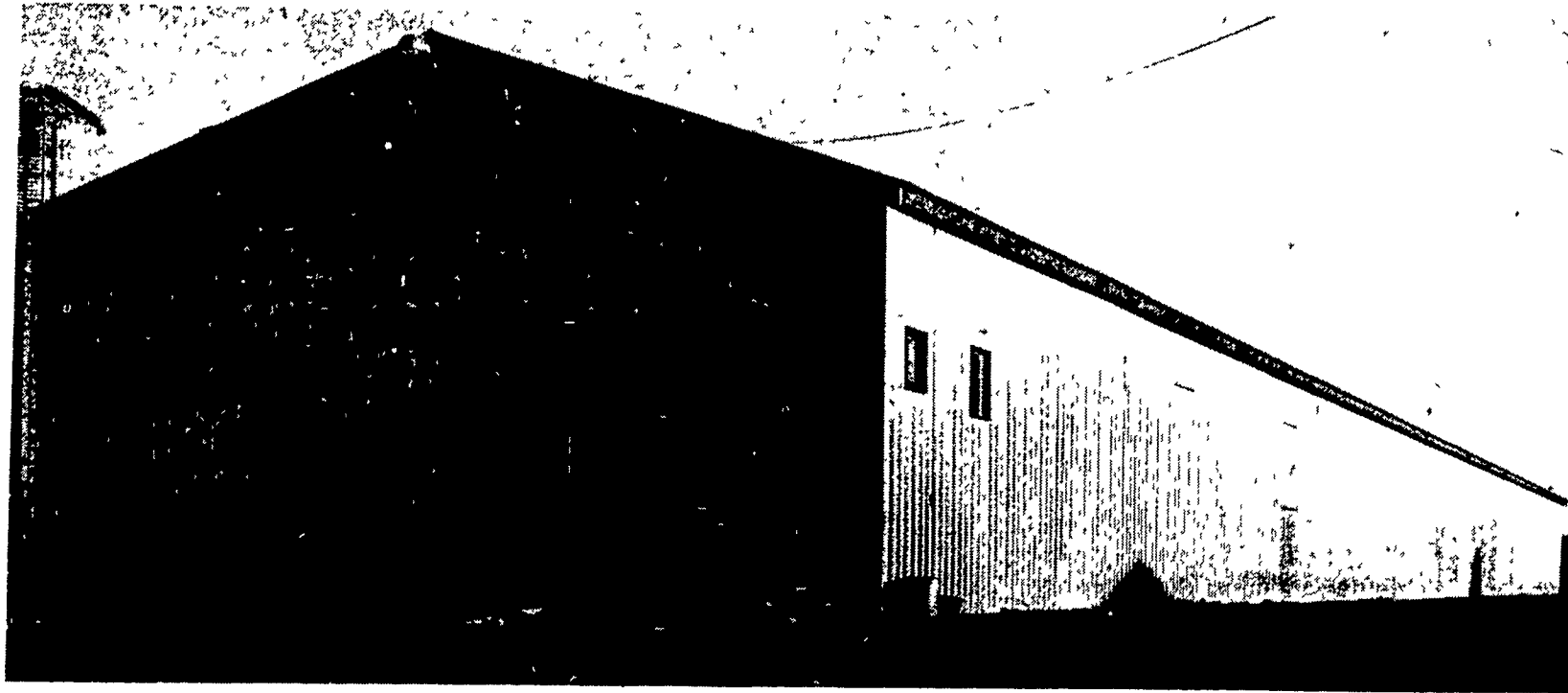


# AGWAY



**MAY WE HELP YOU CLIMB THE  
STAIRWAY TO SUCCESS WITH  
AGWAY'S TOTAL POULTRY  
ENTERPRISE PACKAGE**

**HOUSING**

**MANAGEMENT**

**MARKETING**

**SERVICE**

**GRAIN  
EXCHANGE**

**FEED**

**EQUIPMENT**

**BILL CARLIN**  
POULTRY MANAGEMENT  
SPECIALIST



**G & G FEED & SUPPLY**  
Manheim  
665-5001

**HENRY B. HOOVER, INC.**  
Ephrata  
733-6593

**LANCASTER STORE**  
394-0541

**NEW HOLLAND STORE**  
354-2146

**SALUNGA STORE**  
898-2248

**M. M. GOOD & SON**  
Gordonville  
768-3781

**MRS. JACOB L. KURTZ**  
Elizabethtown  
367-5430

**WILLOW STREET STORE**  
464-3521

**QUARRYVILLE STORE**  
786-2126