

Oklahoma City

Thursday, February 24

Estimated Receipts 9,200
Same Day Last Week 9,241
Same Day Last Year 2,497

Fairly active, feeder cattle and calves steady to 50c higher compared to last Thursday; demand fairly broad for all weights and 400 - 700 pound heifers; fairly large attendance buyers.

Sales as of 12:30 P.M.

Feeder Steers: Choice, few Prime 300-400 pound 46.00-52.25; 400-500, 42.25 - 46.00; 500-600, 39.50-43.25; 600-700, 39.00-42.00; 700-800, 37.25-40.50, largely 38.00-39.50; load 705 pound at 41.10; 800-979, steers 36.75-38.10; mixed Good and Choice 300-500, 41.25-44.00; 500-700 37.00-39.25; mostly Good 600-917 pound holstein steers, 31.75-33.90.

Feeder Heifers: Choice, few Prime 300-400 pound 38.00-40.00, few lots 304-318, 42.00-42.30; 400-500, 36.25-39.50; 500-600, 37.60-37.90; few 700-750, 33.00-35.40; mixed Good and Choice 335-500, 33.50-37.25; few 500-625, 33.00-34.00.

Lebanon Valley Livestock Market, Inc.

1 mile east of
Fredericksburg
along Route 222

Phone Jonestown
865-2881

Sale every Tuesday at 1:30
P.M. starting with feeder
cattle and pigs

Peoria Cattle

Thursday, February 24

Receipts this week 6400; last week 5900; last year 1500. Trading was very uneven on slaughter steers. Average Choice to Prime grades ended 25-50 higher than the previous weeks close. Below grades were under heavy buying pressure with some sales closing 25-50 lower than last week. Mixed Good to Average Choice short - fed lots encountered the greatest decline. Slaughter heifer prices increased substantially on Monday, but declined 25-50 by mid-week. Despite Wednesday's drop in prices, slaughter heifers still closed 50-75 higher than the previous period. Cows were steady to 50 higher, with Utility and Commercial grades showing the greatest upturn. Bulls ended strong to 50 higher. Supply consisted mainly of High Good to Average Choice slaughter steers and heifers, with several loads Mixed Choice to Prime steers; balance of receipts mainly cows.

Slaughter Steers: Two loads High Choice and Prime 1200-1290 pounds yield grade 3-4, 38.25. Mixed Choice and Prime 1125-1300, 3-4, 37.50-38.00. Choice 950-1300, 2-4, 35.50-37.75. Mixed Good and Choice 850-1175, 34.25-36.00. Some in week, 34.25-35.25. Good 31.25-34.50. Few Holsteins 32.00. Standard and Good Holsteins 30.00-31.00. Standard Holsteins 29.00-30.50.

Slaughter Heifers: Choice 800-1025 pounds yield grade 2-4, 34.50-36.00. Mixed Good and Choice 750-950, 33.25-34.75. Good 30.50-33.50.

Cows: Commercial 22.00-24.50. Utility 23.75-25.25. High yielding Utility 25.25-26.00. Cutter 21.50-24.00. Canner 19.00-21.50.

Bulls: Utility and Commercial 27.00-31.00.

Hog Prices

Lancaster Auction

Wednesday, February 23

Barrows and Gilts 50-75 lower. Barrows and Gilts: US 1 210-220 lbs. 28.50-28.75; US 1-2 210-240 lbs. 27.10-27.35; US 2-3 200-260 lbs. 26.75-27.00; couple lots US 3-4 230-240 lbs. 26.25-26.50; US 2 185-200 lbs. 26.00-26.60.

Lancaster Market

Monday, February 21

No report available due to Holiday.

New Holland Auction

Monday, February 21

Hogs 621: Barrows & Gilts mostly 25c lower. US No. 1-2 200-235 lbs. 27.75-30.50; US No. 1-3 190-250 lbs. 27.25-27.75; US No. 2-4 240-280 lbs. 26.00-27.25.

Sows: US No. 1-3 300-500 lbs. 20.00-23.00.

Boars: 20.00-22.00.

Vintage Auction

Saturday February 19

Hogs 261: US No. 1-2 200-240 lbs. 28.00-28.25; US No. 1-3 190-250 lbs. 27.00-27.75; US No. 2-4 180-280 lbs. 26.35-27.00.

Tuesday, February 22

Barrows and Gilts 50, instances 1.00 lower.

Barrows and Gilts: US 1 210-235 lbs. 27.25-27.60; US 1-2 200-240 lbs. 26.85-27.25; US 2-3 195-245 lbs. 26.50-26.85, mainly 26.75-26.85.

Lebanon Valley Auction

Tuesday, February 22

127 Hogs — Barrows and Gilts, U.S. 2-3 200 - 250 pounds, 26.50 - 27.00; lot at 27.60; 2-4 215 - 245 (few), 25.10 - 26.50; 2-4 175 - 190, 25.10 - 25.75.

Sows: U.S. 2-3 300 - 450 pounds, 22.10 - 23.10.

Boars; (few) 21.00.

Lancaster Farming, Saturday, February 26, 1972—3

Futures Trading

(Closing bids as of Thursday, February 24)

	Chicago Cattle	Chicago Hogs	New York Maine Potatoes	Chicago Fresh Eggs
March			2.70	30.85
April	34.40	24.40	2.87	29.60
May			3.40	29.80
June	33.55	26.45		
July		26.80		33.90
August	33.05	26.15		
September				38.60
October	32.45	23.88		
November			2.70	
December	32.20	23.35		39.00
February 73'	32.30			

Trend - Cattle are lower, Hogs are lower, Potatoes are steady and Eggs are lower.

a-asked b-bid n-normal

Markets provided by Commodity Dept., Reynolds Securities, Inc.

Peoria Auction

Hogs: 4500. Fairly active, opening 25 lower. US 1-2 200-240 lbs. 26.00-26.25; 50 head 26.50; 1-3 200-250 lbs. 25.25-26.00.

Indianapolis Auction

Hogs: 2000. Steady to strong, slow. US 1-2 200-230 lbs. 26.50-26.75; 44 head 27.00; 1-3 200-250 lbs. 26.00-26.50; 1-3 190-200 lbs. 25.25-26.25, 2-3 240-280 lbs. 25.50-26.00.

Nottingham Auction

Market not reported at time of publication.

St. Louis Auction

Hogs: 4500. Steady to weak, some 25 lower. US 1-2 near 200 head 200-230 lbs. 26.50; 1-3 200-230 lbs. 26.00-26.25; 1-3 230-250 lbs. 25.50-26.00; 2-3 200-250 lbs. 25.50-25.75; 2-3 250-270 lbs. 25.00-25.75.

Lincoln's Patent

In 1849, Abraham Lincoln was awarded a patent for "b u o y i n g vessels over shoals." This was the first and only patent obtained by a president. It was never put into practical use.

**TRY A CLASSIFIED
AD-IT PAYS!**

U. S. Inspected Livestock Slaughter

For the week ending Thursday, February 24

	CATTLE	HOGS	SHEEP
Week to date	450,000	1,154,000	137,000
Same period last week	452,000	1,234,000	148,000
Same period last year	411,000	1,310,000	158,000

Estimated daily livestock slaughter under Federal Inspection.



TRI-DECK IS THE MULTIPLE TIER CAGE SYSTEM WITH PROVEN PRODUCTION FEATURES

- The world's best selling feeder with exclusive remix wheel
- Heavy Duty Engineered cage support frames on 8-foot centers
- Watering systems designed by poultrymen for poultry
- Cushionized egg collection systems with genuine Jute belts
- Engineered ventilating systems with top quality components
- Cages are Double Dipped the galvanized-after-welding process that is guaranteed for ten years
- Reliable manure removal systems

BIG DUTCHMAN

A Division of U S Industries, Inc

EASTERN BRANCH

215 Diller Ave., New Holland, Pa. 17557

Ph. 354-5168



WINPOWER



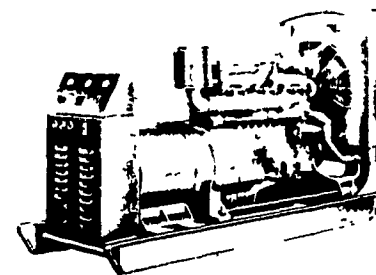
GASOLINE - GAS -
DIESEL - GENERATING
SETS FOR:

STAND-BY or
CONTINUOUS DUTY
ALTERNATORS
& CONTROLS

BRUSHLESS EXITATION

6 KW thru 125 KW

- DAIRY FARMS
- POULTRY HOUSES
- HATCHERIES
- FIRE DEPARTMENTS
- INDUSTRIAL PLANTS
- RESIDENTIAL
- ANYWHERE STAND-BY
POWER IS NEEDED



We design and install complete Automatic Systems. We Service and Repair any make Generator.

Also offer Preventive Maintenance on a contract basis to keep your generator in sure running condition.

Specialists In Electric Power Generating Equipment



ELECTROMECH

ELECTROMECHANICAL SERVICE

ROUTE 222, EPHRATA, PA. 17522

PHONE (717) 733-7911

COUNTIES
SERVED
LANCASTER
BERKS
LEBANON
DAUPHIN
SCHUYLKILL

ELECTRIC MOTOR • GENERATOR • POWER TOOL SPECIALISTS