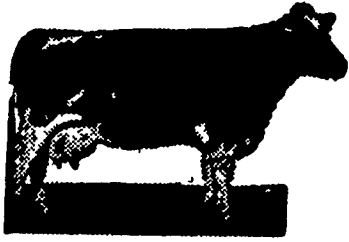


# ★ Public Sales Register ★

## HOLSTEIN DISPERSAL SALE



**100 HEAD  
GRADE  
HOLSTEINS**

**FRIDAY, MARCH 3, 1972  
11:00 A.M.**

Located 5 miles South of Oxford, Pa., turn off Rte. 472 at Hickory Hill or 1½ mile South of Lincoln University off #896. Watch for arrows at Camp Saginaw Road.

**CERTIFIED AND ACCREDITED HERD FOR MANY YEARS. 86 HEAD MILKING AGE, 13 HEIFERS BRED FOR FALL and some started calves.**

\*DHIA Records will be given day of sale.

\*There are cows in this herd that have milked their 80 pounds, presently they average 40 lbs. per cow, with some recently fresh. Many bred back for summer and early fall.

Herd Sire which cows are bred to is a son of Marquis from a 3 year old, record dam with 17,780 milk, 698 fat. See them sell!!

Owner

Aucts. Diller  
and Kreider

**E. HARVEY CHASE, JR.**

R.D. #1, Lincoln University, Pa.

Lunch Available

## PUBLIC SALE OF FARM MACHINERY, ETC. SATURDAY, MARCH 4, 1972

The undersigned will offer at Public Sale, 3 miles north of Lebanon, Pa., off Route 72. Watch for Sale Sign.

**SOME EAR CORN, HAY, STRAW**

**THREE TRACTORS 1970 JOHN DEERE**

2020 RU, 1500 hours, Live PTO, 3-Point Hook-up, Hydraulic Positive Traction, Heat Houser, Front End Wheel Weights Hydraulic Cylinder.

**961 FORD LIVE PTO Hydraulic Hood-up**

**8N FORD STANDARD PTO**

**WHEEL WEIGHTS; SAUDER MANURE LOADER**

**ALL TRACTORS ARE IN EXTRA GOOD CONDITION**

**NEW HOLLAND NO. 66 PTO BALER**

NEW HOLLAND No. 33 CROP FLAIL CHOPPER PTO, New Holland No. 616 Corn Harvester; Fox Blower PTO with 40' Pipe; New Holland No. 56 Rake 5-Bar on Rubber; Massey Ferguson 7' Grass Mower, 3-Point Hook-up; New Idea No. 7 Corn Picker Single Row PTO; New Holland 30' Elevator; John Deere 9' PTO Windrower; John Deere 13-Disc Grain Drill on Rubber; John Deere 2-Row Corn Planter, 3-Point Hook-up; New Holland PTO Tank Spreader; New Idea No. 12 Tractor Spreader; JOHN DEERE F-125 3-BOTTOM 16" PLOW, 3-Point Hook-up; FORD 3-BOTTOM 14" PLOW, 3-Point Hook-up; Ford 2-Bottom 14" PLOW; 3-Point Hook-up; BRILLIAN 10" CULTIPACKER; JOHN DEERE DISC HARROW, 28-Disc; 7' 3-Point Hook-up Scraper.

3-Point Hook-up Carrier; New Holland Rubber Tire Wagon, 16' Bed, 6-Ton, Corn Side and False Endgate; Electric Weld Rubber Tire Wagon, 16' Bed;

1950 ½-TON CHEVROLET PICK-UP

250-Gal. Gas Tank on Skids; 12 Pack of Baler Twine; Smith Air Compressor; Lincoln Electric AC-2 25 AMP Welder and Supplies; 250 Ft. 12-2 Electric Wire; Electric Motor; Electric Fencers; Lot Electric Fence Posts; Wooden Fence Posts; Steel and Wooden Gates; Barb Wire; Variety of Lumber; 2x8-12' Boards; Snow Fence; Cement Blocks; Sheets of Tempered Pressed Wood; 2 Canvas Tarpaulins; 2 Steel Water Troughs; 3 Bath Tubs used for Water Troughs; Steel Drums; Milk Can; Water Bowls; Wheelbarrow Box, new; Railroad Iron; 2 Vises; Pulleys; Jacks; Hand Sprayer; Car Rack; Grease Tubes; Ford Hydraulic Oil; Half Drum of 20 Oil; Gas Heater; Forks; Shovels; Hammers; Large Variety of Tools; Western Auto Rotary Mower, 21"; and many other articles not mentioned.

Auctioneer's Note: All Machinery is in Extra Good condition. If you are in need of Machinery, don't miss this sale!

Sale at 12:00 Noon. Terms Cash

**AARON MARTIN, JR.**

Frank and Paul Snyder, Auctioneers  
Kunkle and Hoover, Clerks.

Refreshments by North Lebanon Township Lionettes  
Not Responsible for Accidents

(Continued from Page 28)

FRI. MARCH 3- Large Holstein Dispersal located south of Oxford. For Harvey Chase, Jr, Diller and Kreider, Auctioneers.

SAT. MARCH 4- 12 Noon Public Auction of Farm Machinery, Trucks and Real Estate located 7 miles north of Chestertown, 1 mile from Lynch on Clark Road, Signs posted from Lynch and

Worton, Md. Sale by Dorland Farm, Albert B. Nesbitt, owner, (Lynch) Worton, Maryland. Harry Rudinck & Sons, Inc., Sales Managers and Auctioneers of Galena, Md.

SAT MARCH 4- 10 A.M. Public Sale of Farm Machinery and Irrigation Equipment at Newton Longstreet Residence, Wain

Road, Chesterfield, N. J. Turn off Chesterfield-Crosswicks Road, Anyone using N. J. Turnpike, get off Exit 7 at Bordentown and go East to Chesterfield. Selling for Newton Longstreet. E Allen Nixon, Auctioneer.

SAR MARCH 4- 10 A.M. Yonkin Dispersal of 62 Head of Holstein Cattle and Farm Equipment located 3½ miles east of Milton, Penna. just off Route 642, 8 miles west of Danville, Pa. 6 miles east of Lewisburg, and 4 miles from Montandon, Montour County. Sale by Mr. & Mrs. Roy Yonkin, Ronald D. West, Sale Manager, Robert M. Shaylor, Auctioneer.

SAT MARCH 4- 1 P.M. Berks County Pork Producers Association Spring Sale at Kutztown Fair Grounds, Kutztown, Pa.

SAT MARCH 4- 12 Noon Public Sale of Farm Equipment located 3 miles North of Lebanon on Route 72. Sale by Aaron Martin, Jr., Rt. 3 Lebanon. Frank and Paul Snyder, Auctioneers

SAT. MARCH 4- 12 Noon Public Sale of Farm Equipment located 3 miles North of Lebanon on Route 72. Sale by Aaron Martin, Jr., Rt. 3 Lebanon. Paul Snyder, Auctioneer.

SAT. MARCH 4- Farm Equipment Sale for Paul V. Hess, near Mountville, Pa. Diller and Kreider Auctioneers.

SAT. MARCH 4- Carpenter Dairy Dispersal in Northern Pennsylvania. Details later Call auctioneers for further information. Diller and Kreider, Auctioneers.

SAT. MARCH 4- Public Sale of Farm Implement and Livestock between Farmersville and Ephrata. Terms by Isaac Z. High. Frank L. Steller and Robert E. Martin, Auctioneers

TUES. MARCH 7- Public Sale of Livestock and Farm Implements just South of Heller's Church on Rt. 772 between Leola and Witmer. Terms by David B. King. Frank L. Steller and Robert E. Martin, Auctioneers.

WED. MARCH 8- Public sale of farm machinery, equipment,  
(Continued On Page 30)

## HORSE SALE

**WED., MAR. 1, 1972**

at 6:00 P.M.

To be held at my New Place of Business, 2 miles East of Intercourse, at intersection of Route 340 and New Holland Road, 4 miles South of New Holland.

LOAD OF STANDARD BRED HORSES  
FOR AMOS STOLTZFUS.

LOAD OF STANDARD BRED HORSES  
from OHIO for LARRY MARTIN.

LOAD OF DRAFT HORSES FROM MISSOURI FOR BILL WARNER, consisting of MATCHED TEAMS and SEVERAL SINGLES, few COLTS, and several PAIRS MULES, all direct from his farms.

Horses Hitched 1 P.M.

LOCAL and CONSIGNED HORSES.

Sale starts at 6:00 p.m. on Equipment. Horses at 7:00 p.m.

**PAUL Z. MARTIN**

Residence Phone 717-354-6671  
Business Phone 717-768-8108

MARTIN AUCTIONEERS

## RONALD D. WEST SALES

### MR. & MRS. ROY YONKIN DISPERSAL

Located 3½ miles east of Milton, Penna. just off Route 642, 8 miles west of Danville, Penna. 6 Miles East of Lewisburg, and 4 miles from Montandon, Montour County.

**SATURDAY, MARCH 4th, AT 10:00 A.M.**

### 62 HOLSTEIN CATTLE:

This herd consists of 44 Milking Cows, Most Fresh and Close by Sale Time. Balance are bred for Summer. A real nice Herd that shows Milk, Good Breeding, Size and Condition. 9 Large Springing Heifers and 9 Started and Yearling Heifers. Blood and T. B. Tested, Vaccinated for Shipping Fever, Pregnancy Tested. Charts furnished Day of Sale. Mr. Yonkin has been a successful Dairyman for many years. You will find Top Cows here. 3 Diesel Ford Tractors, H Tractor, New Baler, New Chopper, new Rotary Mower, New Corn Picker, New 4-Row Planter, New Unloading Wagon, New Owatanna Feed Grinder, 1968 Ford Pickup, New Tractor Manure Loader. More good and new equipment than you have seen at one Sale.

### VANCE CRANE & SON COMPLETE DISPERSAL

Interlaken, New York

Saturday, March 18th at 10:00 A.M.

Discontinuing Farming, we will sell 75 Registered Hereford, Excellent Breeding, Interstated 2 M Tractors and a complete line of Farm Equipment. Quantity of Hay, Straw and Corn. 100 Acre Farm—Good, large Buildings, Level Ground, Excellent Location to be sold at Public Auction Day of Sale.

RONALD D. WEST, SALE MANAGER  
ROBERT M. SHAYLOR, AUCTIONEER  
ROBERT SLINGERLAND, CLERK

If you are interested in having an Auction or selling your entire Personal Property outright, large or small, Farms, Dairies, Businesses, Household Furnishings, Etc. Call the Best, Ronald D. West 717-724-1989 or write to R. D. 1 Mansfield, Penna. or R. D. 4, Danville, Penna. 717-275-2881. Licensed and Bonded with the U. S. Dept. of Agriculture and New York and Pennsylvania.

• MORE MILK • MORE MEAT  
• MORE PROFIT

WITH

**MADISON SILOS**

• Feed high-quality, nutritious, corn and grass silage all year for more milk, more meat and more profit

• Low original cost  
• Low upkeep cost  
• More than 60,000 Madison Silos in use



### Madison Silos

Div. Martin Marietta Corp.  
1070 Steinmetz Rd.  
Ephrata, Penna. 17522  
Ph. 733-1206

### LOCAL DEALERS

Frank Snyder  
Akron 859-2688

Caleb Wenger  
Quarryville 548-2116

Landis Bros. Inc.  
Lancaster 393-3906

Carl L. Shirk  
Lebanon 867-3741

Sollenberger Farm Supply  
Centerport, Pa.  
Ph. 215-926-7671