

Public Sale Register

(Continued from Page 31)

WED. MARCH 15- 1 P.M. 150 acre Dairy Farm, located ¾ mile west of Christiana known as Frank Myers Farm. Diller and Kreider, Auctioneers.

THURS. MAR. 16- 11:30 A.M. Public Sale of Full Line of Farm Equipment located 2 miles west of Millersville along Owl Bridge Road, Master Twp. Watch for arrows Sale by Chester and Elsie Keeperts, Carl Ciller and J. Everett Kreider, Auctioneers.

FRI. MARCH 17- Kemper Sexton Farm Equipment Sale east of Oxford, Pa. Kreider and Diller, Auctioneers.

SAT. MARCH 18- 10:30 A.M. Public Sale of Valuable Farm Machinery and Personal Property at RD12, Hellam Branch at Delroy turn at Helder's Paint Store off East Prospect York Road Terms by William C and Viloa M Buser; Jacob A. Gilbert, Auctioneer.

SAT MARCH 18- All Day Sale of Farm Machinery and Holstein Dispersal, near Jersey Shore, Lycoming County, Pa. Sale by Anson Fisher, Diller, Kreider and Fraley, Auctioneers.

SAT MARCH 18- Russell F. Heilman & Son, 1 mile North of Cleona, 50th Anniversary Public Sale of Reg. Holstein Cattle and Yorkshire Hogs. Roy I. Ebersole and Walter Dupes, Auctioneers.

WED MAR 22- Public Sale of farm machinery, equipment, hdw, implements and supplies at our new place of business along Route 340, 2 miles East of Intercourse and 4 miles South of New Holland. Sale by Paul Z Martin, Blue Ball, Pa.

THURS. MARCH 23- Registered Holstein Dispersal located just off Rte. 30 near Leaman Place. Sale by Elmer N. Hershey, Diller and Kreider, Auctioneers.

SAT. MARCH 25- Public Sale of Dairy Herd and Farm Equipment for Wm Ravegum, R. D. 4, Manheim Wolgemuth, Auctioneer

SAT. MARCH 25- Public Sale of Farm Implements and Household Goods just east of Guernsey Bar, Lincoln Highway East, 5 miles East of Lancaster. Terms by David Witmer, Frank L. Steller and Robert E. Martin, Auctioneers.

SAT MARCH 25- Andrew Berkins Estate Sale located south of The Buck just off Rt. 272. Diller and Kreider, Auctioneers.

FARMERS

Now is the time to think about your sprayer needs for the coming year. We have any type sprayer you may need: high or low pressure, tractor mounted or trailer type, boom or boomless, with Myers PTO PLUNGER TYPE PUMPS THAT WILL HANDLE ANY MATERIAL.

New and used sprayers and pumps of various sizes in stock now.

Lancaster County's Only Dealer Specializing in Sprayer Sales & Service

LESTER A. SINGER

RONKS
PH. STRASBURG
687-6712

SAT. APRIL 1- Cattle and farm equipment for Stanley Kleinfelter located north of Kings Store in Cleona, Lebanon County. Harry H. Bachman, Auctioneer.

SAT. APRIL 1- C. H. Wolgemuth & Sons Annual All Day Farm Equipment Sale located 4 miles West of Manheim, Lancaster County, Pa. Farm Equipment,

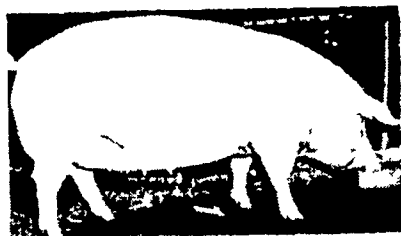
Tractors, anything sold on commission.

FRI & SAT APRIL 7 & 8- 2 Day Antique Sale for Miriam and Florence Breckbill in the Village of Willow Street, Pa. Diller and Kreider, Auctioneers.

SAT. APRIL 8- 10 A.M. 4th annual

(Continued on Page 33)

PENNSYLVANIA LANDRACE ASSOCIATION STATE SHOW and SALE



"THE GREAT
WHITE BREED"

LANDRACE TRADE MARKS

Saturday, Feb. 26, 1972

Show: 9:00 A.M.

Sale 1:00 P.M.

Location: Pennsylvania Farm Show Building
Harrisburg, Pennsylvania

- - 50 HEAD - -

BRED GILTS —

OPEN GILTS — BOARS

The original lean meat breed.

The world's best mothers.

More capacity to produce.

An asset to any herd.

For catalog write to: JAY D. BLATT, Secretary
PENNSYLVANIA LANDRACE ASSOCIATION
R2, Annville, Pennsylvania 17003

Public Sale

FULL LINE OF

FARM EQUIPMENT

1 Mile West of Intercourse, Pa. South of Rt. 340, Lancaster County, next to Harvest Drive Motel.

Thursday, February 24, 1972

12:00 Noon

Following Allis Chalmers Equipment:

A.C. D-19 Tractor (comfort cab), A.C. D-17 Tractor, Both completely overhauled, A.C. D-14 Tractor good condition (all are gas tractors).

(2) Forage Wagons, Hopper Blower, 2 sets of pipe, A.C. 780 Forage Harvester, 2-row Narrow head (Ex.), All-crop Disc Grain Drill, 2200 series Transport Disc (Ex.), A.C. 500 series 4-row Corn Planter with fertilizer attach., A.C. 4-row rear mounted cultivator, 4-bottom 16-inch Slat Bottom Plow.

NEW IDEA

2-row Narrow head Corn Picker (Ex.), Chattonooga Cultimulcher, New Holland Super 68 Hayliner Baler, 10-ft. Smoker Grain Bin w/chassis.

MAYRATH 40-FT.

Elevator w/5-H.P. Elect. Motor, 3 Farm Wagons (1 w/high sides), N.M. Model 325 Manure Spreader, Ontario 12-ft. Spring Tooth Harrow, Cunningham No. 7 Hay Conditioner, A.C. PTO Hay Rake and Tedder, McDeering Fertilizer Drill, Case Stalk Shredder, Farq. 1-row Potato Digger, Potato Grader, Weeder, Mower mounting bracket for D-14 & D-17, Tire Chains for same.

75 TON EAR CORN

No Blight Damage

9 TON CHOICE BARLEY STRAW

Aerovent 36-inch Hay Fan w/5 H.P. Motor, Drier Duct, Cow Mats, S. S. Milk Strainer, Jamesway Stanchions, Water Bowls, Cow Trainers, Ensilage Cart, 1½ H.P. Baldor Elect. Motor (1750 RPM), Remote Hydraulic Ram, Electric Seeder, 500 Gal. Water Tank. New 6 50 x16, 7.00 x 15 tires.

Sale by

MELVIN L. GROFF

RD#1 Gordonville, Pa.

Phone 768-8821

AUCTS. CARL DILLER 464-2233

J. EVERETT KREIDER 284-4517

Lunch Available

10th ANNIVERSARY SALE

At 9:00 A.M. Friday, March 3, 1972

½ mile North of Rt. 23 in Leola on Maple Avenue, Lancaster County, Pa.

Watch for sale sign, Farm Machinery, Horse drawn implements, new tools, 30 tractors, crawlers with blades and loaders, variety of balers, grindermixers, manure spreaders, 1-2 row harvesters, corn pickers, threshing machines, chuck wagons new and used, 2-3 bottom plows, discs, etc, etc.

We sell on commission

BY

DAVID H. GOOD

717-659-9024

Frank and Paul Snyder Auct.

859-2688, 733-7052

FREE Door Prizes Throughout Day. FREE Coffee All Day.

Not Responsible for Accidents.

Sale Always First Friday of Each Month.

Public Sale OF FARM EQUIPMENT

1 mile South of Mountville, Pa. on Hershey Mill Rd., Manor Twp. 1 mile South off Rt. 30, Lancaster County.

SATURDAY, MARCH 4

John Deere 530 (very good condition) power steering, Live PTO; A.C. D15 (power steering) with manure loader; 80 inch snow-bucket and chains; New Holland 268 baler, used 3 seasons (Ex.);

J.D. No. 5 mower; Int. 4-bar rake; J.D. 813 3-bottom 14 inch plow; J.D. AW wheel disc harrow; J.D. 246 cornplanter, Int. 3-section spring harrow; J.D. cultivator; 3-point cultivator with 2-row tobacco hoers; A.C. hay crimper; Templeton 130 bu. manure spreader; two four-wheel rubber tired wagons; 13 disc Ontario grain drill; corn drag with ½ hp. motor; cultipacker; two sets tobacco ladders; tobacco lath, shears and spears; spike harrow; grass seeder; scraper and scorer; old wooden wheelbarrow; milkcans.

65 Ton ear corn; 20 Ton first, second and third cutting alfalfa hay; 4 Ton straw.

Yorkshire Sow and Pigs; Some household items; other items not mentioned.

Sale at 12:30

by

PAUL V. HESS

Aucts: Diller & Kreider

Phone 285-4701

Lunch—Youth Group from Landis Valley Mennonite Church.

HOLSTEIN DISPERSAL SALE



100 HEAD
GRADE
HOLSTEINS

FRIDAY, MARCH 3, 1972
11:00 A.M.

Located 5 miles South of Oxford, Pa., turn off Rte. 472 at Hickory Hill or 1½ mile South of Lincoln University off #896. Watch for arrows at Camp Saginaw Road.

CERTIFIED AND ACCREDITED HERD FOR MANY YEARS. 86 HEAD MILKING AGE, 13 HEIFERS BRED FOR FALL and some started calves.

*DHIA Records will be given day of sale.

*There are cows in this herd that have milked their 80 pounds, presently they average 40 lbs. per cow, with some recently fresh. Many bred back for summer and early fall.

Herd Sire which cows are bred to is a son of Marquis from a 3 year old, record dam with 17,780 milk, 698 fat.

See them sell!!

Owner

E. HARVEY CHASE, JR.

R.D. #1, Lincoln University, Pa.

Aucts. Diller
and Kreider

Lunch Available