

# ★ Public Sales Register ★

(Continued from Page 30)

goods and Antiques, located 3 miles west of Ephrata on Route 322, turn South of Woodcorner Road, ¼ mile to Zimmerman's Animal Health Supply. Sale by Elam Z. Zimmerman, John E. and Paul E. Martin, Auctioneers.

WED. MARCH 1- 11 A.M. Public Sale of Farm Equipment, Hogs and Household Goods located between New Holland and Bareville off Rte. 23, ½ mile south of Peters Road. Terms by Harvey O. Nolt, Robert E. Martin and Frank L. Steller, Auctioneers.

THURS. MARCH 2- 11 A.M.

## NOTICE

### AUCTIONEERS!

We print sale bills.

Call 394-3047 for price.

Public Sale of Farm Equipment and some household Goods located on the premises off Rte. 501 Lexington, Lancaster Co., Pa. Terms by Frank Seibel, Frank and Paul Snyder, Auctioneers.

THURS. MARCH 2- Public Sale of Livestock, Farm Implements and Household Goods located in Leola, 1st farm south of H. M. Stauffer & Son on S. Maple Ave. Terms by Moses Beiler, Frank L. Steller and Robert E. Martin, Auctioneers.

FRI. MARCH 3- 9 A.M. 10th Anniversary Sale located ½ mile North of Rte. 23 in Leola on Maple Ave., Lancaster County Pa. Watch for Sale Sign. Sale by David H. Good; Frank and Paul Snyder, Auctioneers.

FRI. MARCH 3- Large Holstein Dispersal located south of Oxford for Harvey Chase, Jr, Diller and Kreider, Auctioneers.

SAT MARCH 4- 10 A.M. Public Sale of Farm Machinery and Irrigation Equipment at Newton Longstreet Residence, Wain

Road, Chesterfield, N. J. Turn off Chesterfield-Crosswicks Road, Anyone using N. J. Turnpike, get off Exit 7 at Bordentown and go East to Chesterfield. Selling for Newton Longstreet. E. Allen Nixon, Auctioneer.

SAT. MARCH 4- 1 P.M. Berks County Pork Producers Association Spring Sale at Kutztown Fair Grounds, Kutztown, Pa.

SAT. MARCH 4- 12 Noon Public Sale of Farm Equipment located 3 miles North of Lebanon on Route 72. Sale by Aaron Martin, Jr., Rt. 3 Lebanon. Frank and Paul Snyder, Auctioneers.

SAT. MARCH 4- 12 Noon Public Sale of Farm Equipment located 3 miles North of Lebanon on Route 72. Sale by Aaron Martin, Jr., Rt. 3 Lebanon. Paul Snyder, Auctioneer.

SAT. MARCH 4- Farm Equipment Sale for Paul V. Hess, near Mountville, Pa. Diller and Kreider Auctioneers.

SAT. MARCH 4- Carpenter Dairy Dispersal in Northern Pennsylvania. Details later. Call auctioneers for further in-

formation. Diller and Kreider, Auctioneers.

SAT. MARCH 4- Public Sale of Farm Implement and Livestock between Farmersville and Ephrata. Terms by Isaac Z. High, Frank L. Steller and Robert E. Martin, Auctioneers.

TUES. MARCH 7- Public Sale of Livestock and Farm Implements just South of Heller's Church on Rt. 772 between Leola and Witmer. Terms by David B. King, Frank L. Steller and Robert E. Martin, Auctioneers.

WED. MARCH 8- Public sale of farm machinery, equipment, hdw., implements and supplies at our new location along Route 340, 2 miles East of Intercourse, and 4 miles South of New Holland. Sale by Paul Z. Martin, Blue Ball, Pa.

WED. MARCH 8- 10 A.M. Complete Dispersal of 62 Head of Holsteins, and Farm Machinery located 7 miles South of Quarryville off Route 472 at Union, 6 mile North of Oxford. Terms by John P. and Anna W. Thompson, Everett Kreider and Carl Diller, Auctioneers.

THURS. MARCH 9- 11 A.M. Public Sale of Farm Equipment, Heifers and steers located off Broadway, Hanover, Pa., off Route 194 at Moulstown Road, turn East 2½ miles to sale. Sale by Donald G. Stelfox, Hanover RD3, Pa. Clair R. Slaybaugh, Auctioneer.

FRI. MARCH 10- 10 A.M. Laysereffa Farm Complete Dispersal, Registered Holsteins and Farm Equipment located 5 miles north of Lebanon, Pa., 1½ miles South-East of Rt. No. 22 Fredericksburg, off Rt. No. 343, 5 miles from Interstate 81. Cattle will be sold at 1 P.M. Sale by Ned L. and Josephine M. Laysereffa, Jonestown, R.D. 2, Pa. Diller, Kreider and Buffenmyer, Auctioneers.

SAT. MARCH 11- G. K. Wagner Estate located on Old Hershey Road, Elizabethtown, Real Estate, Antiques and Household Goods. C. H. Wolgemuth, Auctioneer.

SAT. MARCH 11- 11:30 A.M. Public Sale of Late Model Farm Machinery and Cattle Truck located off Rt. 24, approx. 3 mile north of Stewartstown, Pa. near the village of Rinely, along Faraway Lane, in York Co., Pa. Sale by Frank S. Sweeney, Owner, Stewartstown, Pa. RD2, Robert L. Sechrist, auctioneer.

SAT. MARCH 11- 12 Noon Public Sale of Farm Machinery, Antiques and Household Goods located 1 mile west of Georgetown on Furnace Road. Terms by Alfred H. Erb.; Lloyd Kreider, Auctioneer.

TUES. MARCH 14- Public Sale of Farm Equipment, at Elizabethtown RD3. Sale by S. S. Ginder; C. H. Wolgemuth, Auctioneer.

(Continued on Page 32)

## Complete Dispersal

7 mile South of Quarryville off Route 472 at Union, 6 mile north of Oxford.

### Wednesday, March 8, 1972

10:00 A.M.

**62 Head of High Grade Holstein Dairy Cattle.**

**45 Milk cows incl. 1 reg. King Pin dau.** fresh (very nice).

**17 Holstein heifers** 1 due March bal. 8-12 mo. old.

17 fresh 2½ mo. prior to sale date. Bal. throughout year.

**2 Red & White Holsteins.** 1 by Milk & Honey.

TB & Bangs Cert. Vacc. Charts Sale day 30 yrs. of A.B.C. breeding.

This dairy very worthy of your attendance because of quality and production.

Sale under heated tent.

Allis Chalmers 170 fully eq. 3 yrs. old. A.C. 3 bottom 16 in. plow (trip), John Deere 3010 diesel w/water heater fully equipped, J.D. F125 3 bottom 16 in. plow (trip), Massey Ferguson 35 w/loader hyd. fork & dirt scoop, A.C. 28 disc transport and 10 ft. Brillion cult. (both 1 year), Case 9 ft. spring harrow, Oliver 28 disc.

New Idea 702 Uni. V6 diesel w/3 row 30 in. corn head pick or shell and Combine head. (2 yr. very good).

4 bin wagons, M.F. #12 baler w/thrower, N.H. 3 pt. mower 7 ft. w/crimper hitch, 2 rakes J.D. & Farmhand 5 wheel rake, N.H. 36 ft. elevator w/swivel end for corn & bale chute (good), 3 bale thrower wagons 2 AC Chassis and Grove beds 1 David Bradley, 2 flat bed wagons, 2 drills Ontario 16 disc & IHC 13 disc, J.D. 10 ft. fert. drill w/seed attachment.

20 Foot Corn Silage from a 20 ft. silo w/pro-cil. May use unloader.

App. 36 ton Ear Corn, 15 ton hay, 8 ton straw.

Little giant drag elevator, 6 ft. A.C. rotary mower (trailer), M.F. 6 ft. 3 pt. drag, Ferguson 3 pt. cultivator, Century Sprayer 8 row high pressure pump, 3 pt. subsoiler, Papec 16 in. silo filler, 180 amp. Forney welder, 12 KW Wind Par generator (2 yrs. old), 21 ft. metal hay rack, mineral feeder, 275 gal. fuel tank on skids, 100 gal. fuel tank to carry on pickup, 40 ft. ex. ladder, 2 bu. alfalfa seed, seed rye, 100—12 in. block.

Milk tank washer, dumping station, 4 Universal milkers used with straps, 2 new outside waterers, 75 ft. endless belt, stantion jacks, Stewart clippers, fogger forks, chains shovels and many other articles not mentioned.

Few Household goods to be sold at 10:00 o'clock.

Terms by,  
**John P. and Anna W. Thompson**

Everett Kreider & Carl Diller Aucts.

Farm has been sold makes this sale necessary.

Lunch furnished.

## BERKS COUNTY PORK PRODUCERS ASSOCIATION SPRING SALE

KUTZTOWN FAIR GROUNDS KUTZTOWN, PA.

Sat. March 4-1:00 P.M.

### 50-HEAD-50

MEAT TYPE BREEDING STOCK

ALL BREEDS BRED GILTS - OPEN GILTS - SERVICE BOARS

Consigned By Eastern Pennsylvania's Top Breeders

Eligible To Ship Anywhere

FOR CATALOGUES CONTACT

EARL H. RABENOLD RD2 KUTZTOWN

## PUBLIC SALE OF HOLSTEIN DAIRY CATTLE AND FARM MACHINERY

Having sold my farm, I will sell at Public Auction my entire herd and farm machinery.

### Saturday, Feb. 26, 1972 10:30 A.M.

Located between Old Conowingo Road and Connelly Road off Rtes. 1 and 222.

Auctioneers Note - Don't miss this sale. This is an outstanding herd of young High-Grade Holsteins. Milk records up to 70 to 75 lbs.

### CATTLE - 55 HEAD HOLSTEIN DAIRY CATTLE

One of the best herds in Cecil County. This herd has breeding and production any farmer can use. 35 milk cows. Some fresh and close springing by day of sale. Balance in full flow of milk. 7 Bred Heifers and 13 open Heifers. Breeding dates and milk weights available. These cattle are almost all home raised.

### FARM MACHINERY

Tractors- JD 2010, Case 630, Farmall 230, JD 420 crawler; Wagons- 2 grain wagons, 1 JD chuck wagon, Gehl wagon; JD rake, JD hay baler, 6 mos. old post hole digger, 3 pt. hookup; 2 disc harrows, semi-mtd. 3 bottom plow, 1 Anntory sprayer, almost new; hay wagon, JD elevator, electric and PTO; JD flail chopper No. 15, AC chopper, .2 pt. mower, snow blade, 2-row corn planter, 1954 Ford truck ½ ton, very low mileage; Case grain drill, New Idea manure spreader.

Approximately 3,000 bushels Corn

10,000 to 20,000 bales of Hay

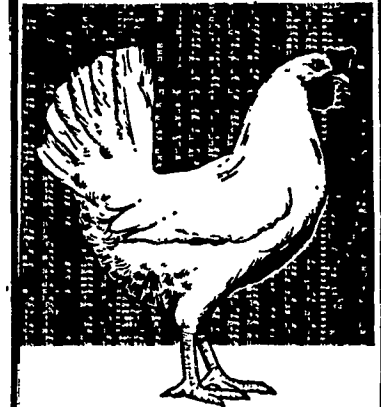
Dairy Supplies- 1 vacuum pump, vacuum dumping station, 3 Surge milkers, buckets, strainers, etc.

**DONALD WEAVER**  
OWNER

MOORE & KREIDER, AUCTIONEERS

Not responsible for accidents day of sale.

Church Women will serve lunch



sustain top  
production  
with the  
**BABCOCK  
B-300**

Keeping production up...costs down...is the profit key in poultry operations. And more and more records on commercial flocks of Babcock B-300's... "The Businessman's Bird"... show sustained production of top quality eggs...often with an additional 20 to 30 eggs per bird housed over other strains. Come in... look at the records and the B-300... "The Businessman's Bird".



**BABCOCK  
FARMS, INC.**  
Telephone (717) 626-8561