

Peoria Cattle

Thursday, February 17

Receipts this week (4-days) 5,500; receipts last week 5,100; receipts 1600 year ago. Slaughter steers grading High Choice and Prime 50-75 lower through Wednesday and those cattle not represented on Thursday. Average Choice and below steers mostly 75, instances 1.00 lower. Slaughter heifers 1.00 lower. Cows fully 50-1.00 lower. Bulls steady. Steer supply predominately High Good to Average Choice 975-1200 pounds with some loads High Choice and Prime 1150-1350 pounds over all quality of steers not as good as previous weeks with a large share of receipts High Good to Average Choice.

Slaughter Steers; at mid-week mixed Choice and Prime 1185-1225 pounds yield grade 3-4, 37.25-37.50; some 1175-1350 pounds early 37.50-38.00. Choice 975-1275 pounds yield grade 2-4, 35.25-37.00 late. Mixed Good and Choice 875-1125 pounds 34.00-35.50. Good 31.00-34.00. Standard and Good mostly Holsteins 30.00-31.00.

Slaughter Heifers; loadlots Mixed Choice and Prime heifers not represented after Monday when 925-1025 pounds yield grade 3-4, 35.75-36.00. Late, Choice 800-1025 pounds yield grade 2-4, mostly 34.00-34.75, few 35.00. Mixed Good and Choice 750-925 pounds 32.75-34.00. Good 30.00-32.75.

Cows: Commercial 22.00-24.00, some 24.50, early. Utility closed

Oklahoma City

Thursday, February 17

Estimated receipts 8,800
Same day last week 11,580
Same day last year 8,849

Moderately active, feeder steers over 600 pound and feeder heifers over 500 pound 50c to 1.00 lower compared to late last week; feeder steers under 600 pounds and feeder heifers under 500 pound steady to 50c lower; majority receipts Average Good to High Choice 400-850 pound steers and 400-650 pound heifers; supplies included liberal shipments from wheat pastures; fairly large attendance buyers.

Sales as of 12:30 P.M.

Feeder Steers: Choice, few prime 300-400 pound 44.00-50.00; 400-500 42.00-48.00, package 418 pound at 49.90; 500-600, 39.00-44.25; 600-700, 38.50-40.75, part load 683 pound at 41.50; 700-800, 36.75-39.50; 800-1000, 35.00-38.00, package 805 pound at 39.00; Mixed Good and Choice 400-600, 38.50-43.00; 600-788, 35.50-38.25; mostly Good 600-865 pound holstein steers 31.75-34.00.

Feeder Heifers: Choice, few Prime 300-400 pound 38.25-40.75; 400-500, 35.25-38.50; 500-600, 34.50-38.00; 600-700, 34.00-36.50; few Mixed Good and Choice 300-400, 35.75-37.00.

23.50-25.25, few 25.50. Cutter 21.50-24.00. Canner 19.00-21.50.

Bulls; Utility and Commercial 27.00-30.00, few 30.50-31.50.

Hog Prices

Lancaster Auction

Wednesday, February 16

Barrows and Gilts steady to 50 lower.

Barrows and Gilts: US 1 210-230 lbs. 28.50-28.75; US 2-3 200-240 lbs. 27.60-27.85; US 3-4 215-260 lbs. 27.25-27.35.

Lancaster Market

Monday, February 14

Barrows and Gilts steady to 25 lower.

Barrows and Gilts: US 1 210-235 lbs. 29.00-29.50; US 1-2 200-240 lbs. 28.25-28.50; US 2-3 195-260 lbs. 27.50-28.00.

New Holland Auction

Monday, February 14

HOGS 905: Barrows & Gilts: 25c to 50c higher. US No. 1-2 200-240 lbs. 28.00-30.50; US No. 1-3 200-250 lbs. 27.50-28.00; US No. 2-4 250-280 lbs. 26.50-27.50; US No. 2-4 150-190 lbs. 26.00-27.50.

SOWS: US No. 1-3 300-550 lbs. 20.00-23.25.

Boars: 20.00-22.00.

Vintage Auction

Tuesday, February 15

Barrows and Gilts mostly 50 lower.

Barrows and Gilts: US 1 210-240 lbs. 28.25-28.75; US 1-2 200-240 lbs. 27.85-28.25; US 2-3 200-250 lbs. 27.25-27.85; US 2 180-195 lbs. 26.50-27.00.

Lebanon Valley Auction

Tuesday, February 15

254 Head Barrows and Gilts — U.S. 2-3 195-250 pounds, 27.60-28.00; 2-4 190-260, 26.60-27.10; 2-4 120-185 (few), 26.00.

Sows: U.S. 1-3 300-500 pounds, 25.00-26.25; 2-3 300-600, 21.50-21.85.

Boars: (few) 20.50-21.60.

18 Head of Feeder Pigs — U.S. 1-3 35-50 pounds (few), 20.00.

Peoria Auction

HOGS: 3500. Moderately active, under 240 lbs. opening about steady; heavier wts. not established. US 1-2 200-235 lbs. 26.50-27.00. one load mostly US 1 27.25. 1-3 200-250 lbs. 26.00-26.50.

Futures Trading

(Closing bids as of Thursday, February 17)

	Chicago Cattle	Chicago Hogs	New York Maine Potatoes	Chicago Fresh Eggs
February	37.15	27.05		24.25
March			2.72	29.10
April	35.25	25.17	2.92	29.00
May			3.44	29.50
June	34.25	27.15		31.25
July		27.32		
August	33.55	26.55		
September				38.45
October	33.00	24.50		
November			2.71	
December	32.70	23.72		38.40

Trend — Cattle are higher, Hogs are higher, Potatoes are lower, and Eggs are higher.

a-asked b-bid n-normal

Markets provided by Commodity Dept., Reynolds Securities, Inc.

Omaha Cattle

Thursday, February 17

Compared with last weeks close. Closing prices slaughter steers and heifers 1.00 lower, instances 1.25 lower on Good and low-Choice shortfeds. Cows 25-50c lower, bulls fully steady. Feeder cattle and calves weak to 50c lower, the decline mainly on fleshy feeders as a reflection of

lower slaughter prices

Four day receipts 18,600 as compared 19,400 previous week and 23,300 a year ago. Steers approximately 37 percent, heifers 35 per cent, the overall finish not particularly attractive with a large volume Good and Low-Choice and many carrying a substantial amount of mud. Cows 12 percent, feeders 10 percent. Marketings decreased from previous week but poorly distributed over trading period. Sharpest price decline in several months enforced on slaughter steers and heifers as a consequence of downward plunging carcass trade and poor movement of finished product. Most slaughterers entered week with comfortable inventory of live cattle on hand and buyers took determined stand to bring live prices in line with lowered carcass quotations.

Average cost slaughter steers first three days 35.46 and 1120 pounds as compared 36.23 and 1129 pounds last week and 32.11 and 1150 pounds a year ago.

Market Steers

Steers — Six loads High-Choice and Prime U.S. 3-4, 1130 - 1245 pounds, 37.10 - 37.25; 2-4 1147 - 1225, 36.50 - 37.00; Choice 975 - 1250, 35.00 - 36.25; Mixed Good and Choice 950 - 1225, 34.50 - 35.25; Good, 31.50 - 34.50; Holsteins 2-3 1200 - 1500, 31.50 - 32.50; Standard and Low-Good, 30.50 - 31.50.

Heifers — Three loads High Choice and Prime 3-4, 36.10 - 36.40; 950 - 1110, 35.50 - 36.00, 2-4 825 - 1025, 34.50 - 35.50; Mixed Good and Choice 800 - 975, 33.50 - 34.50; Good, 28.50 - 33.50; Standard and Low-Good, 27.00 - 28.50.

Cows — Utility and Commercial, 22.50 - 24.25; Utility Dairybreds, 24.50 - 25.00; Canner and Cutter, 20.00 - 23.00; Mixed Cutter and Low-Utility, 23.25 - 23.50.

Bulls: — Utility, Commercial and Good, 26.50 - 29.00; Commercial, 30.00 - 31.00; Cutter and Low-Utility, 24.50 - 26.50.

Nottingham Auction

6:30 p.m. Monday, February 14
Feeder Pigs: 16.50 - 17.50.

Indianapolis Auction

HOGS: 5500. 25-50 lower. US 1-3 200-240 lbs. 26.25-26.75; 1-3 240-260 lbs. 25.75-26.25; 2-4 250-280 lbs. 25.00-25.75.

St. Louis Auction

HOGS: 2000. 25 to mostly 50 lower, very slow. US 1-2 200-240 lbs. 26.50-27.00; 1-3 200-250 lbs. 26.00-26.50; 2-3 240-270 lbs. 25.50-26.00.

U. S. Inspected Livestock Slaughter

For the week ending Thursday, February 17

	CATTLE	HOGS	SHEEP
Week to date	451,000	1,251,000	154,000
Same period last week	458,000	1,131,000	156,000
Same period last year	423,000	1,204,000	151,000

Estimated daily livestock slaughter under Federal Inspection.

NEW INTERNATIONAL® 950-1150 GRINDER MIXERS



● NEW 600 square inch screen area increases grinding capacity up to 18,000 pounds of corn an hour, increases delivery to the mixing tank

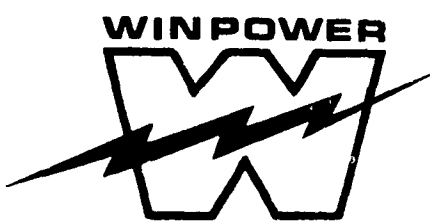
● NEW double auger flighting provides thorough, vibration-free mixing with all feeds

● NEW adjustable hay retarders (standard) assure thorough grinding, better mixing with grains and concentrates, positive flow of materials through the mixer.

Cope & Weaver Co. NEW PROVIDENCE 786-7351
Messick Farm Equip. ELIZABETHTOWN 367-1319

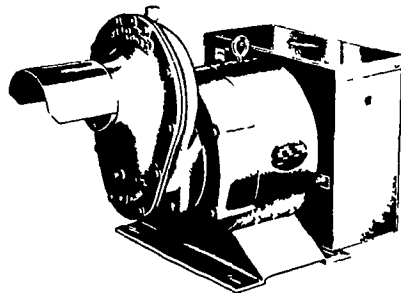
International Harvester Sales and Service EPHRATA 733-2283
C. B. Hooper & Son INTERCOURSE 768-8231

Kauffman Bros. MOUNTVILLE 285-5951



WORLD'S LARGEST MFG. OF TRACTOR-DRIVEN ALTERNATORS

TRACTOR DRIVEN ALTERNATORS



PTO Units Available From 7 KW to 60 KW 20 Year Warranty

POWER WHEN YOU NEED IT MOST

1800 RPM

INSURE YOUR FARM OPERATIONS AGAINST POWER OUTAGES. HAVE EXPERIENCED PEOPLE INSTALL & SERVICE.

CALL NOW

L. J. EDWARDS
FARM SALES, Manager



ELECTROMECH
ELECTROMECHANICAL SERVICE
ROUTE 222, EPHRATA, PA. 17522
PHONE (717) 733-7911

LP-NATURAL GAS GASOLINE DIESEL ENGINE GEN. SETS TO 200,000 WATTS

ELECTRIC MOTOR ● GENERATOR ● POWER TOOL SPECIALISTS

Lebanon Valley Livestock Market, Inc.

1 mile east of Fredericksburg along Route 222

Phone Jonestown 865-2881

Sale every Tuesday at 1:30 P.M. starting with feeder cattle and pigs