

# Penn State Poultry Short Course Outlined

The program has been announced for the 12th annual Pennsylvania Poultry Sales-Service Short Course at University Park April 4-5.

Cochairing the two-day program are Floyd W. Hicks, Penn State poultry specialist, and Robert F. Gentry, professor of veterinary science.

Registration begins at 8:30 a.m. Tuesday, April 4.

The morning session, under the direction of Kenneth Goodwin, head of the Penn State department of poultry science, will begin at 9:30 with Edward T. Mallinson, director of poultry division and regional laboratories, Pennsylvania Bureau of Animal Industries, speaking on "Paratyphoid - An Increasing Problem."

At 10:15 a.m., A Kermit Birth, Penn State professor of ag economics, "Causes and Cures of Egg Breakage"; 11 a.m., Anthony P. Stemberger, Penn State

professor of ag economics, "Supply and Demand in the Poultry Industry."

Following lunch at 11:45 a.m., Harry Metz of Metz Poultry Farms, Belleville, will chair the afternoon session beginning at 1:15 a.m. with a "Review of Penn State Poultry Vaccination Programs" by Dr. Gentry

At 1:45 p.m., "The Role of Poultry House Gases in Poultry Performance" by Glenn O. Bressler, Penn State professor of poultry science, 2:15 p.m., "Egg Sanitation", James E. Williams, USDA research veterinarian, 3 p.m., question and answer period.

3:30 p.m., "Waste Handling" by Dr. Bressler, 4:15 p.m., "VVND - Viscerotropic Velogenic Newcastle Disease" by L. Dwight Schwartz, Penn State associate professor of veterinary science Extension. Adjourn at 4:45 p.m.

At the 6:30 p.m. evening dinner session, Joseph MacNeil, Penn

State associate professor of food science, will be toastmaster. Speaker will be James I. Tarman, Penn State director of athletics public relations.

Morning session chairman Wednesday will be A.L. Bortree, head of the Penn State department of veterinary science. The program will begin at 8:30 a.m. with Morris G. Mast, Penn State assistant professor of food science, on "Egg and Poultry Inspection"

The morning program also includes 9 a.m., Don A. Trumbo, Penn State professor of psychology, on "Industrial Psychology and the Poultry Industry" 9:30, Owen D. Keene, Penn State assistant professor of poultry science, "PCB's -

Polychlorinated Biphenyls." 10, question and answer period.

At 10:15, Homer J. Bicksler, Pennsylvania Poultry Federation executive director, will chair a panel on "Broiler Condemnations and Down Grading" featuring: Gene O. Bailey, president of the Pennsylvania Poultry Processors Association, on the "Role of Processing"; Cleve Hastings, Pennfield Corporation broiler

coordinator, "Role of Management", and Dr. Schwartz, "Role of Disease."

### No Survivors

Five men accompanied Adm. Robert Peary to the North Pole in 1909. Four were Eskimos and one was American. Both the last remaining Eskimo, Ootah, and the American, Matthew Henson, died in 1955.

## Lancaster Laboratories, Inc.

### Analytical Services Division

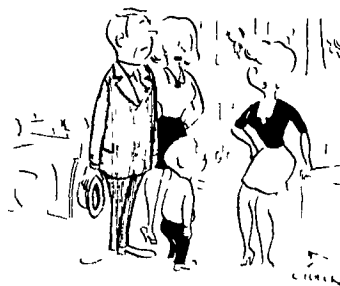
offers the following items of current interest to Agriculture and Agribusiness:

**Water and Waste Water:** Bacteriological, physical, and chemical analyses

**Feeds, Forages, and Foods:** Base composition, nutrient values, drugs, and related additives and/or residues

2425 New Holland Pike  
Lancaster, Pa. 17601  
656-9043 or 656-9868

## My Neighbors

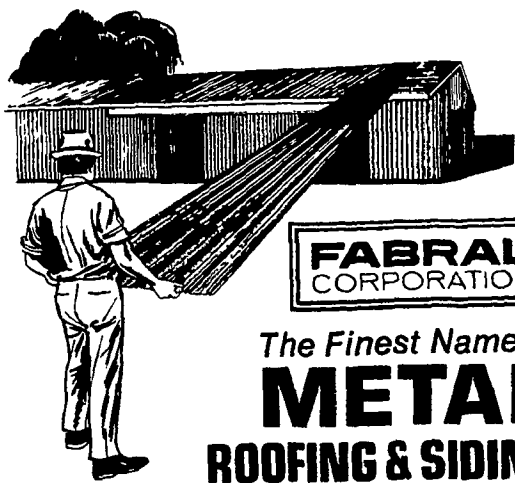


"Why, Jerry, the way you act in class I had no idea your parents were normal human beings."



IT'S THE **SELLING PRICE** THAT COUNTS  
COMPARE AT CASHWAY BEFORE YOU BUY

THESE ARE CASHWAY'S EVERYDAY LOW PRICES



FABRAL CORPORATION

The Finest Name in **METAL ROOFING & SIDING**

### DOUBLE-RIB

ALUMINUM HI-STRENGTH ALLOY

**\$13.10**  
100 SQ FT

WIDTH 48" NET  
LENGTHS 8' thru 24'

CUSTOM LENGTHS... AT NO EXTRA COST!

29 Ga. 1 1/4" Corr. Galv. Steel **\$12.10**

GALVANIZED STEEL 29 GAUGE

**\$12.35**  
100 SQ FT

WIDTH 32" NET  
LENGTHS 7' thru 14'

## POLE BARN MATERIAL

### SQUARE BARN POLES

Penta Treated - Yellow Pine

4"x4"	10'	each	\$2.82
	12'		\$3.39
	14'		\$3.96
	16'		\$4.63
4"x6"	12'		\$5.09
	14'		\$5.94
	16'		\$6.78
	18'		\$7.99
6"x6"	20'		\$9.08
	14'		\$8.90
	16'		\$10.18
	18'		\$11.99
	20'		\$13.62
	22'		\$15.31
24'		\$17.06	

3 Miles East on Route 340

2275 Old Philadelphia Pike  
**LANCASTER, PA.**



DELIVERY AVAILABLE

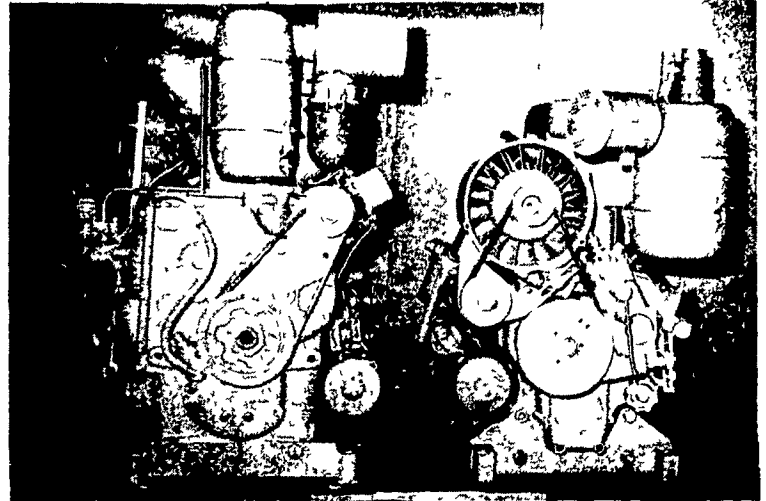
HAUL YOUR OWN AND SAVE

OPEN 7:30 to 5:30  
SIX DAYS A WEEK

Phone: 397-4829

Phone: 397-4820

## DEUTZ



### F1L-812 F2L-410 USED DEUTZ DIESELS FOR SALE

1-Model F1L-812, 10 HP at 1800 RPM.  
Rebuilt, 90 day warranty. Price with \$600.00  
stubshaft

1-Model F2L-410, 14 HP at 1800 RPM.  
Overhauled, excellent condition Price w- \$650.00  
O stubshaft

ALSO:

1-used Lister diesel, 7 HP at 650 RPM- \$300.00

Phone: 354-4181

## STAUFFER DIESEL, INC.

312 W. Main St.

New Holland, Pa. 17557

## TRADE PICKERS NOW!

**NO PAYMENT UNTIL SEPT. 1**

That's right! Take delivery of a brand new Superpicker right now and you don't have to pay for it until Sept. 1, 1972.

You save money by purchasing now, because we can give you a better trade-in allowance. This gives us more time to recondition your old picker for resale.

So, come in and talk Superpickers now. Remember, no payment until September 1!



A. L. HERR & BRO.  
Quarryville

A. B. C. GROFF, INC.  
New Holland

LANDIS BROS., INC.  
Lancaster

LONGENECKER  
FARM SUPPLY  
Rheems

CHAS. J. McCOMSEY  
& SONS  
Hickory Hill, Pa.

STOLTZFUS  
FARM SERVICE  
Cochranville, Pa.

N. G. HERSHEY & SON  
Manheim

KINZER EQUIP. CO.  
Kinzer

ROY H. BUCH, INC.  
Ephrata, R.D. #2