

Omaha Cattle

Thursday, February 3

Compared with last weeks close, late trading on slaughter steers 75c - 1.00 lower than previous week and heifers 50 - 75c lower. Cows weak after early advance erased. Bulls strong to 50c higher. Feeder cattle and calves strong to 50c higher.

Four day receipts 18,800 as compared 18,700 previous week and 22,600 a year ago. Slaughter steers approximately 42 per cent, general finish fairly attractive with moderate supply High-Choice. Cows 9 per cent and feeders 9 per cent, with supplies of feeders largely fleshy two-way kinds. The upward spiral in fed cattle prices brought to an abrupt halt as a result of sharply declining carcass prices and sluggish movement of finished product. The major decline came on a shortened midweek supply as buyers took a determined stand to establish some sort of reasonable ratio between current live prices and carcass realizations. Despite storm conditions most interests competitive for only minimum numbers to meet immediate requirements. Muddy cattle quite prevalent and those carrying substantial amount of mud usually sold around 50c below same grade relatively clean animals.

Average cost slaughter steers first three days 36.10 average weight 1,121 pounds as compared 36.15 and 1,127 pounds previous week and 31.65 and 1,163 pounds a year ago.

Market Steers

Steers - 20 loads early High-Choice and Prime U.S. 3-4, 1,091,134 pounds, 37.40-38.00; late 1,108-1,286, 36.65-37.25; Choice 2-4, 975-1,275, 35.50-36.50; Mixed Good and Choice, 950-1,225, 34.50-35.50; Good, 31.75-34.50; Holsteins 2-3 31.75-32.25; Standard and Low-Good, 30.50-31.50.

U. S. Inspected Livestock Slaughter

For the week ending Thursday, February 3

	CATTLE	HOGS	SHEEP
Week to date	452,000	1,197,000	159,000
Same period last week	457,000	1,105,000	159,000
Same last year	455,000	1,219,000	160,000

Estimated daily livestock slaughter under Federal inspection.

New Holland Horse Auction

Monday, January 31

Reported receipts of 294 head of horses; market stronger on work horses, balance steady.

Load West Virginia riding horses, 230-305.

Load Illinois riding horses, 125-260.

Load Tennessee work horses and mules; mules, 135-480; work horses, 420-480.

Local consigned work horses, 165-330; riding horses, 110-185; mules, 120-235; driving horses, 100-300; few better horses, 250-285.

Mare Ponies, 10-25; Geldings 10-20; Colts, 5-8; Larger Ponies 40-50; Killers, 9-11.

Heifers - 10 loads early High-Choice and Prime U.S. 2-4, 877-1,065 pounds, 36.10-36.65; late 3-4, 965-1,131, 35.75-36.00; Choice 2-4, 825-1,025, 34.50-35.50; Mixed Good and Choice, 800-975, 33.50-34.50; Good, 29.00-33.50; Standard and Good, 27.00-29.00.

Cows - Utility and Commercial, 22.00-24.00; Canner and Cutter, 19.00-22.50.

Bulls - Utility, Commercial and Good, 26.00-28.50; Commercial, 29.00-30.00; Cutter and Low-Utility, 24.00-26.00.

Feeder Steers

Prices strong to 50c higher under good early demand. Supplies mainly fleshy two-way steers which moved readily early but under narrowed demand at midweek as a reflection of declining slaughter prices. Outshipments of 1,600 head compared 1,200 previous week.

Steers - Two loads Choice, 468-528 pounds, 41.00-41.75; 8 loads, 1,025-1,050, 36.00-36.50; High-Good and Choice, 800-1,097, 35.00-36.00; Good, 763, 34.50.

Heifers - Choice, 763-789 pounds, 34.50-35.75.

Hog Prices

Lancaster Auction

Wednesday, February 2

Barrows and Gilts 1.00-1.50 lower.

US 1 210-225 lbs. 28.50; US 2-3 200-250 lbs. 27.00-27.50.

Lancaster Market

Monday, January 31

Barrows and Gilts steady to 25 lower, instances 50 lower on 210-260 lbs. US 2-3

US 1 200-235 lbs. 30.00-30.50; US 1-2 195-240 lbs. 29.25-29.50; US 2-3 190-255 lbs. 28.75-29.00; 255-280 lbs. 28.00-28.50.

Vintage Auction

Tuesday, February 1

Barrows and Gilts 50-1.00 lower.

US 1 205-230 lbs. 28.60-29.00; US 1-2 200-240 lbs. 28.35-28.50; US 2-3 195-245 lbs. 28.00-28.35; 245-265 lbs. 27.50-28.00.

Saturday, January 29

Hogs 950. Barrows and Gilts Strong to \$1 higher. Few US No. 1-2 190-240 lbs. 30.00-30.50; US No. 2-3 190-240 lbs. 29.35-29.75; US No. 2-4 190-260 lbs. 28.75-29.35; US No. 2-4 160-180 lbs. 25.50-27.50; US No. 1-3 320-595 lbs. 20.50-22.50

Sows US No. 1-3 320-595 lbs. 20.50-22.50; Few US No. 2-3 350-460 lbs. 18.50-20.25; Few Boars - 18.50-19.50.

New Holland Auction

Monday, January 31

Hogs 1142. Barrows and Gilts: 75c to \$1 higher. US No. 1-2 200-240 lbs. 29.25-31.00; US No. 1-3 190-250 lbs. 28.75-29.25; US No. 2-4 240-280 lbs. 28.00-28.75; US No. 2-4 150-185 lbs. 27.50-28.75.

Sows US No. 1-3 300-550 lbs. 20.00-22.50.

Boars 18.50-20.50.

St. Louis Auction

Hogs 5000. 75-1.00 lower than Wednesday's best time. US 1-2 200-230 pounds 26.25-26.50; 225 head 26.75; 1-3 200-240 pounds 25.75-26.25; 240-260 pounds 25.50-26.00.

Peoria Auction

Hogs 4000. Fairly active, opening 50-1.00 lower. US 1-2 200-235 pounds 26.00-26.50; 1-3 200-250 pounds 25.50-26.00; 2-3 250-260 pounds 24.75-25.50.

FUTURES TRADING

(Closing bids as of Thursday, February 3)

	Chicago Cattle	Chicago Hogs	New York Maine Potatoes	Chicago Fresh Eggs
February	36.25	27.45		27.00
March			3.06	31.00
April	34.40	26.10	3.35	30.75
May			4.00	30.90
June	34.45	27.65		
July		27.75		
August	32.90	26.90		
September				38.25
October	32.15	24.35		
November			2.88	
December	32.02	23.80		39.00
February '73				32.12

Trend - Cattle are lower, Hogs are lower, Potatoes are lower, and eggs are stronger.

a-asked b-bid n-normal
Markets provided by Commodity Dept., Reynolds & Company

Lebanon Valley Auction

Tuesday, February 1

293 Head Barrows and Gilts - U.S. 2-3 195-240 pounds, 27.60-28.10, couple lots to 28.50; 2-4 195-240, 27.35-27.60.

Sows - U.S. 2-3 300-600 pounds, 20.00-22.50.

Boars - (Few) 18.75-18.85.

24 Head Feeder Pigs - Couple lots U.S. 1-3 30 and 35 pounds, 16.50 and 20.50 per head.

Indianapolis Auction

Hogs 3000. 25 to mostly 50 lower, slow. US 1-2 200-235 pounds 26.50-27.00; 1-3 200-250 pounds 26.00-26.50; 2-4 240-270 pounds 25.50-26.00.

West Nottingham Auction

Rt. 276, Rising Sun, Md.

7:30 p.m. Monday, January 31

Calves: 85-115 pounds, 42.00-54.00; 115-240, 50.50-60.00.

Cows: Good, 21.00-25.25; Cutters, 16.00-20.00.

Feeder Heifers: 22.00-28.00

Monday, January 31

Fat Hogs - 205 pounds, 27.25.

Boars - 15.25.

Feeder Pigs - 16.00 - 20.50

Oklahoma City

Thursday, February 3

Estimated Receipts 2500

Same day last week 5425

Same day last year 5445

Salable receipts sharply reduced as the result of hazardous driving conditions in this area. Moderately active, compared to last Thursday, Feeder cattle over 500 pounds uneven, averaging about steady, feeder calves under 500 pounds in limited supply, represented sales little changed. Supply mainly High Good and Choice steers and heifers over 500 pounds.

Sales as of 12:45 P.M.

Feeder Steers: Couple lots Choice 290-385 pounds steers

50 00-58 50, Choice and few Prime

400-500, 42.50-46.00; 500-600, 40.00-

43 75; 600-700, 38 50-42 50; 700-800,

38.50-39.75, 800-950, 36.25-39.25

Good and Choice 400-500, 39 50-

42 00; 500-700, 36.50-40 50.

Local Grain

Thursday, February 3

These prices are made up of the average prices quoted by six participating local feed and grain concerns. It should be noted, however, that not every dealer handles each commodity. All prices are per bushel, except for ear corn which is per ton

The average local grain prices quoted Thursday, February 3, 1972, are as follows

	Bid+	Offered+
Ear Corn	39 33	46.00
Shelled Corn	1 34	1.52
Oats (local)	80	.97
Oats (western)	—	1.12
Barley	1 11	1.32
Wheat	1.45	1.69

+Bid is the price the dealer will buy from the farmer delivered to the mill

Offered is the price the dealer will sell for at his mill.

Lebanon Valley

Livestock

Market, Inc.

1 mile east of Fredericksburg along Route 222

Phone Jonestown

865-2881

Sale every Tuesday at 1:30 P.M. starting with feeder cattle and pigs

GREEN 'N EASY

a fertilizer program for corn. Increase your yield and return with this proven program that combines the benefits of UNIPEL 20-10-10 pre-plant application with UNIPEL STARTER SPECIAL 13-34-10 applied as a "pop-up" or in a band. See us soon



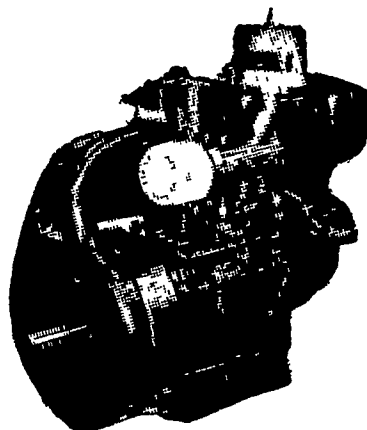
P. L. ROHRER & BRO., INC.

Smoketown, Pa.

Ph. 397-3539

"PETTER POWER PAYS"

WORLD LEADERS IN DIESEL ENGINE DESIGN



1 1/2 to 45 H.P.
Continuous Rating

With Petters Exclusive Warranty Your Satisfaction is Guaranteed.

LET US KNOW YOUR SERVICE PROBLEMS

Gas and Diesel Engines Sales and Service

GEHMAN BROS.

1 Mile North of Terre Hill on Route 897
East Earl, R.D. 1, Pa. Phone 215 445-6272